

USH 41: IH 43 TO STH 29 (BROWN COUNTY) OFF-PEAK DAY CLOSURE NO DIVERSION ROUTE (MAX QUEUE METHOD)	OCTOBER
	Analyzed for 2009 Construction Season

SUMMARY OF TRAFFIC MODEL OUTPUT

FRIDAY SOUTHBOUND DIRECTION

TIME OF DAY	FLOWS AND CAPACITY IN VEH/HR						AVERAGE SPEEDS IN MPH			
	MAIN ROUTE		SITE CAPA CITY	FLOW		AV.DEL PER VEH (MINS)	AVERAGE QUEUE (VEH)	MAIN ROUTE		SITE
	DEMAND FLOW	PCT HEAVY		MAIN ROUTE	'DIVER TED'			WITHOUT WORK ZONE	WITH WORK ZONE	
MID-1 AM	147	0.0	OFF	147	0	0.00	0	66.1	66.1	66.1
1-2 AM	119	0.0	OFF	119	0	0.00	0	66.1	66.1	66.1
2-3 AM	131	0.0	OFF	131	0	0.00	0	66.1	66.1	66.1
3-4 AM	153	0.0	OFF	153	0	0.00	0	66.1	66.1	66.1
4-5 AM	459	0.0	OFF	459	0	0.00	0	65.5	65.5	65.5
5-6 AM	1291	0.0	OFF	1291	0	0.00	0	64.0	64.0	64.0
6-7 AM	2432	0.0	OFF	2432	0	0.00	0	61.6	61.6	61.6
7-8 AM	3294	0.0	OFF	3294	0	0.00	0	52.8	52.8	52.8
8-9 AM	2163	0.0	OFF	2163	0	0.00	0	62.3	62.3	62.3
9-10 AM	1964	0.0	OFF	1964	0	0.00	0	62.7	62.7	62.7
10-11 AM	1970	0.0	1499	1970	0	8.42+	235	62.7	13.0	30.8
11AM-NOON	1951	0.0	1499	1493	459	16.89+	429	62.7	8.7	30.8
NOON-1PM	2063	0.0	1499	1494	568	16.89+	429	62.5	8.7	30.8
1-2 PM	2038	0.0	1499	1495	543	16.89+	429	62.6	8.7	30.8
2-3 PM	2294	0.0	1499	1496	798	16.90+	429	62.1	8.7	30.8
3-4 PM	2450	0.0	OFF	2450	0	1.13	64	61.4	38.9	38.9
4-5 PM	2436	0.0	OFF	2436	0	0.00	0	61.5	61.5	61.5
5-6 PM	2333	0.0	OFF	2333	0	0.00	0	62.0	62.0	62.0
6-7 PM	1844	0.0	OFF	1844	0	0.00	0	63.0	63.0	63.0
7-8 PM	1172	0.0	OFF	1172	0	0.00	0	64.2	64.2	64.2
8-9 PM	847	0.0	OFF	847	0	0.00	0	64.8	64.8	64.8
9-10 PM	699	0.0	OFF	699	0	0.00	0	65.1	65.1	65.1
10-11 PM	531	0.0	OFF	531	0	0.00	0	65.4	65.4	65.4
11PM-MID	336	0.0	OFF	336	0	0.00	0	65.8	65.8	65.8

"OFF" INDICATES NO ROAD WORK (ALL LANES OPEN TO TRAFFIC)

+ INDICATES QUEUEING EXCEEDS USER-SPECIFIED MAXIMUM LIMIT

----- SITE BREAKDOWN DELAYS -----	
BREAKDOWN DURATION (MINS)	0
RANGE OF QUEUE DELAY - MIN (VEH-H) MAX	0.0
AV BREAKDOWNS PER DAY	0.00
AV QUEUE DELAY/DAY (VEH-H)	0.0
AV TOTAL DELAY/DAY (VEH-H)	0.0

----- SITE ACCIDENT DELAYS -----	
BREAKDOWN DURATION (MINS)	0
RANGE OF QUEUE DELAY - MIN (VEH-H) MAX	0
AV BREAKDOWNS PER DAY	0
AV QUEUE DELAY/DAY (VEH-H)	0
AV TOTAL DELAY/DAY (VEH-H)	0

AVERAGE ACCIDENT NUMBERS (PIA/DAY)	
MAIN ROUTE WITHOUT WORKS	0.0112
MAIN ROUTE WITH WORKS	0.0099
'DIVERSION'	0.0017
<small>PIA: Personal Injury Accidents</small>	
IMPACTS ON ROAD USERS	
ROAD USER COSTS PER DAY	\$34,709
CONGESTED HOURS PER DAY*	5

*Delays Exceeding User-Specified Maximum

**USH 41: IH 43 TO STH 29 (BROWN COUNTY)
OFF-PEAK DAY CLOSURE
NO DIVERSION ROUTE (MAX QUEUE METHOD)**

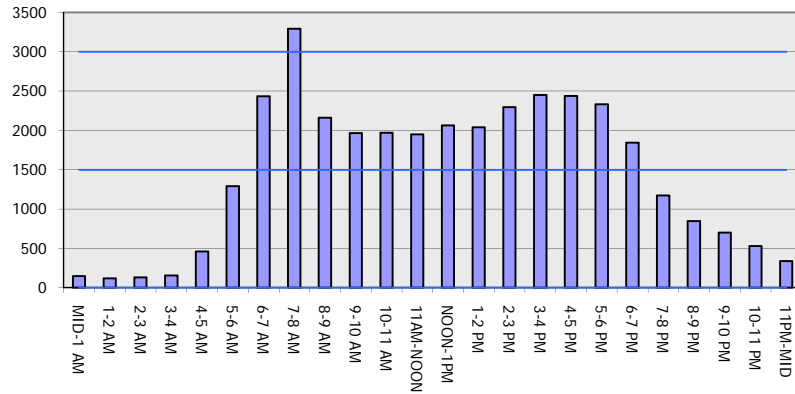
OCTOBER

Analyzed for 2009
Construction Season

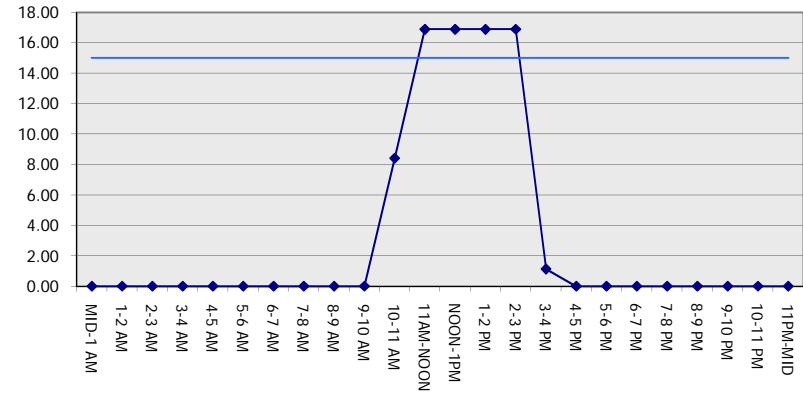
GRAPHICAL REPRESENTATION OF TRAFFIC MODEL INPUT AND OUTPUT

FRIDAY SOUTHBOUND DIRECTION

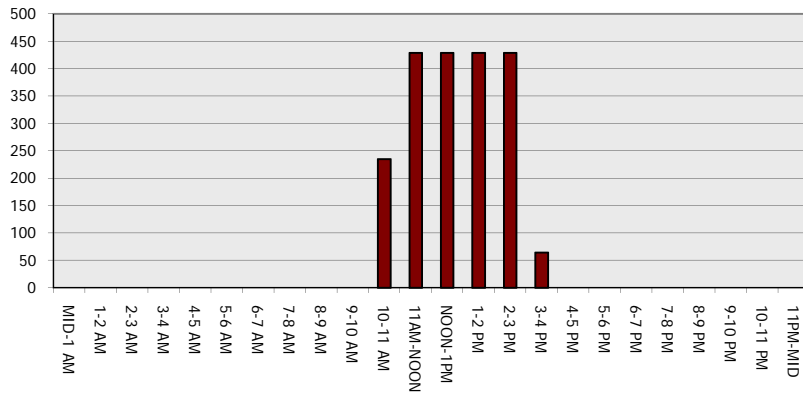
Main Route - Traffic Demand (Vehicles Per Hour)



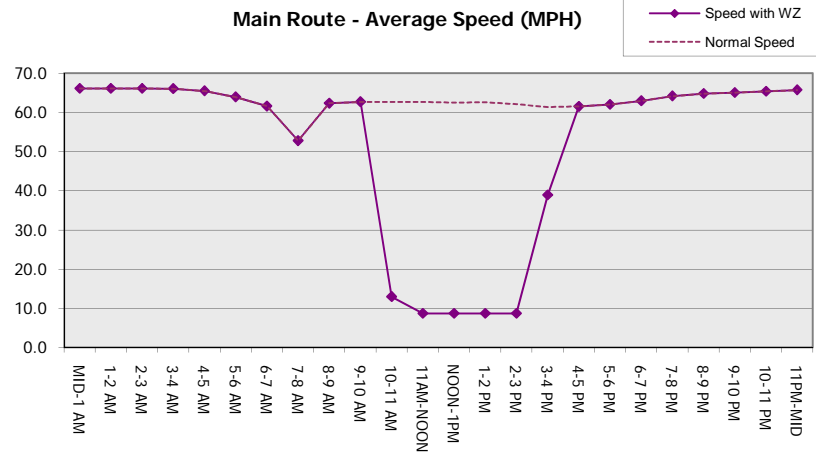
Main Route Average Delay Per Vehicle (Minutes)



Main Route - Average Queue Length (Vehicles)



Main Route - Average Speed (MPH)



USH 41: IH 43 TO STH 29 (BROWN COUNTY) OFF-PEAK DAY CLOSURE NO DIVERSION ROUTE (MAX QUEUE METHOD)	OCTOBER
	Analyzed for 2009 Construction Season

SUMMARY OF TRAFFIC MODEL OUTPUT

FRIDAY NORTHBOUND DIRECTION

TIME OF DAY	FLOWS AND CAPACITY IN VEH/HR						AVERAGE SPEEDS IN MPH			
	MAIN ROUTE		SITE CAPA CITY	FLOW		AV.DEL PER VEH (MINS)	AVERAGE QUEUE (VEH)	MAIN ROUTE		SITE
	DEMAND FLOW	PCT HEAVY		MAIN ROUTE	'DIVER TED'			WITHOUT WORK ZONE	WITH WORK ZONE	
MID-1 AM	231	0.0	OFF	231	0	0.00	0	66.0	66.0	66.0
1-2 AM	151	0.0	OFF	151	0	0.00	0	66.1	66.1	66.1
2-3 AM	161	0.0	OFF	161	0	0.00	0	66.1	66.1	66.1
3-4 AM	146	0.0	OFF	146	0	0.00	0	66.1	66.1	66.1
4-5 AM	255	0.0	OFF	255	0	0.00	0	65.9	65.9	65.9
5-6 AM	613	0.0	OFF	613	0	0.00	0	65.3	65.3	65.3
6-7 AM	1255	0.0	OFF	1255	0	0.00	0	64.0	64.0	64.0
7-8 AM	1597	0.0	OFF	1597	0	0.00	0	63.4	63.4	63.4
8-9 AM	1459	0.0	OFF	1459	0	0.00	0	63.7	63.7	63.7
9-10 AM	1506	0.0	OFF	1506	0	0.00	0	63.6	63.6	63.6
10-11 AM	1740	0.0	1499	1740	0	4.19	105	63.2	19.9	30.8
11AM-NOON	1969	0.0	1500	1703	266	15.14+	385	62.7	9.2	30.8
NOON-1PM	2225	0.0	1499	1498	728	16.90+	429	62.2	8.7	30.8
1-2 PM	2426	0.0	1499	1498	928	16.89+	430	61.7	8.7	30.8
2-3 PM	2718	0.0	1499	1499	1220	16.91+	434	58.6	8.6	30.8
3-4 PM	3393	0.0	OFF	3393	0	2.59	157	51.7	24.5	24.5
4-5 PM	3625	0.0	OFF	3625	0	0.00	0	49.4	49.4	49.4
5-6 PM	3486	0.0	OFF	3486	0	0.00	0	50.8	50.8	50.8
6-7 PM	2523	0.0	OFF	2523	0	0.00	0	60.7	60.7	60.7
7-8 PM	1739	0.0	OFF	1739	0	0.00	0	63.2	63.2	63.2
8-9 PM	1393	0.0	OFF	1393	0	0.00	0	63.8	63.8	63.8
9-10 PM	1280	0.0	OFF	1280	0	0.00	0	64.0	64.0	64.0
10-11 PM	925	0.0	OFF	925	0	0.00	0	64.6	64.6	64.6
11PM-MID	601	0.0	OFF	601	0	0.00	0	65.3	65.3	65.3

"OFF" INDICATES NO ROAD WORK (ALL LANES OPEN TO TRAFFIC)

+ INDICATES QUEUEING EXCEEDS USER-SPECIFIED MAXIMUM LIMIT

----- SITE BREAKDOWN DELAYS -----	
BREAKDOWN DURATION (MINS)	0
RANGE OF QUEUE DELAY - MIN (VEH-H) MAX	0.0
AV BREAKDOWNS PER DAY	0.00
AV QUEUE DELAY/DAY (VEH-H)	0.0
AV TOTAL DELAY/DAY (VEH-H)	0.0

----- SITE ACCIDENT DELAYS -----	
BREAKDOWN DURATION (MINS)	0
RANGE OF QUEUE DELAY - MIN (VEH-H) MAX	0
AV BREAKDOWNS PER DAY	0
AV QUEUE DELAY/DAY (VEH-H)	0
AV TOTAL DELAY/DAY (VEH-H)	0

AVERAGE ACCIDENT NUMBERS (PIA/DAY)	
MAIN ROUTE WITHOUT WORKS	0.0119
MAIN ROUTE WITH WORKS	0.0104
'DIVERSION'	0.0023

PIA: Personal Injury Accidents

ECONOMIC IMPACT ON ROAD USERS	
ROAD USER COSTS PER DAY	\$36,892
CONGESTED HOURS PER DAY*	4

*Delays Exceeding User-Specified Maximum

**USH 41: IH 43 TO STH 29 (BROWN COUNTY)
OFF-PEAK DAY CLOSURE
NO DIVERSION ROUTE (MAX QUEUE METHOD)**

OCTOBER

Analyzed for 2009
Construction Season

GRAPHICAL REPRESENTATION OF TRAFFIC MODEL INPUT AND OUTPUT
FRIDAY NORTHBOUND DIRECTION

