

USH 41: CTH AAA TO CTH G (BROWN COUNTY) OFF-PEAK DAY CLOSURE NO DIVERSION ROUTE (MAX QUEUE METHOD)	OCTOBER Analyzed for 2009 Construction Season
-------------------------------------------------------------------------------------------------------------------------------	------------------------------------------------------------

SUMMARY OF TRAFFIC MODEL OUTPUT

SATURDAY SOUTHBOUND DIRECTION

TIME OF DAY	FLOWS AND CAPACITY IN VEH/HR						AVERAGE SPEEDS IN MPH			
	MAIN ROUTE		SITE CAPA CITY	FLOW		AV.DEL PER VEH (MINS)	AVERAGE QUEUE (VEH)	MAIN ROUTE		SITE
	DEMAND FLOW	PCT HEAVY		MAIN ROUTE	'DIVER TED'			WITHOUT WORK ZONE	WITH WORK ZONE	
MID-1 AM	391	0.0	OFF	391	0	0.00	0	65.6	65.6	65.6
1-2 AM	270	0.0	OFF	270	0	0.00	0	65.9	65.9	65.9
2-3 AM	246	0.0	OFF	246	0	0.00	0	66.0	66.0	66.0
3-4 AM	202	0.0	OFF	202	0	0.00	0	66.0	66.0	66.0
4-5 AM	272	0.0	OFF	272	0	0.00	0	65.9	65.9	65.9
5-6 AM	402	0.0	OFF	402	0	0.00	0	65.6	65.6	65.6
6-7 AM	675	0.0	OFF	675	0	0.00	0	65.1	65.1	65.1
7-8 AM	921	0.0	OFF	921	0	0.00	0	64.6	64.6	64.6
8-9 AM	1189	0.0	1499	1189	0	0.62	0	64.1	42.5	38.9
9-10 AM	1441	0.0	1499	1441	0	1.00	1	63.7	35.1	32.3
10-11 AM	1785	0.0	1500	1785	0	5.24	134	63.0	14.0	30.8
11AM-NOON	1930	0.0	1500	1678	252	16.36+	416	62.8	7.9	30.8
NOON-1PM	1987	0.0	1499	1493	493	17.39+	442	62.7	7.6	30.8
1-2 PM	1935	0.0	1499	1495	440	17.39+	442	62.8	7.6	30.8
2-3 PM	1894	0.0	1499	1496	398	17.39+	442	62.8	7.6	30.8
3-4 PM	1909	0.0	1499	1497	412	17.39+	442	62.8	7.6	30.8
4-5 PM	1939	0.0	1499	1498	441	17.39+	442	62.8	7.6	30.8
5-6 PM	1786	0.0	1499	1498	288	17.38+	441	63.0	7.7	30.8
6-7 PM	1549	0.0	OFF	1549	0	0.63	40	63.5	42.0	42.0
7-8 PM	1351	0.0	OFF	1351	0	0.00	0	63.8	63.8	63.8
8-9 PM	1348	0.0	OFF	1348	0	0.00	0	63.9	63.9	63.9
9-10 PM	1210	0.0	OFF	1210	0	0.00	0	64.1	64.1	64.1
10-11 PM	931	0.0	OFF	931	0	0.00	0	64.6	64.6	64.6
11PM-MID	822	0.0	OFF	822	0	0.00	0	64.8	64.8	64.8

"OFF" INDICATES NO ROAD WORK (ALL LANES OPEN TO TRAFFIC)

+ INDICATES QUEUEING EXCEEDS USER-SPECIFIED MAXIMUM LIMIT

----- SITE BREAKDOWN DELAYS -----	
BREAKDOWN DURATION (MINS)	0
RANGE OF QUEUE DELAY - MIN (VEH-H) MAX	0.0
AV BREAKDOWNS PER DAY	0.00
AV QUEUE DELAY/DAY (VEH-H)	0.0
AV TOTAL DELAY/DAY (VEH-H)	0.0

----- SITE ACCIDENT DELAYS -----	
BREAKDOWN DURATION (MINS)	0
RANGE OF QUEUE DELAY - MIN (VEH-H) MAX	0
AV BREAKDOWNS PER DAY	0
AV QUEUE DELAY/DAY (VEH-H)	0
AV TOTAL DELAY/DAY (VEH-H)	0

AVERAGE ACCIDENT NUMBERS (PIA/DAY)	
MAIN ROUTE WITHOUT WORKS	0.0059
MAIN ROUTE WITH WORKS	0.0043
'DIVERSION'	0.0013
<small>PIA: Personal Injury Accidents</small>	
IMPACTS ON ROAD USERS	
ROAD USER COSTS PER DAY	\$66,415
CONGESTED HOURS PER DAY*	7

*Delays Exceeding User-Specified Maximum

**USH 41: CTH AAA TO CTH G (BROWN COUNTY)
OFF-PEAK DAY CLOSURE
NO DIVERSION ROUTE (MAX QUEUE METHOD)**

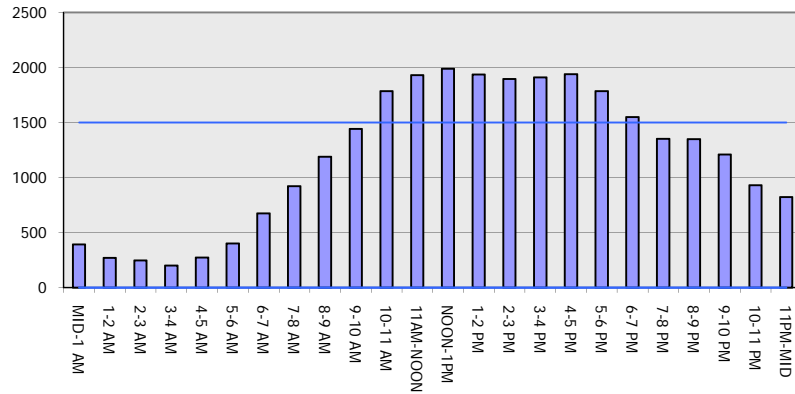
OCTOBER

Analyzed for 2009
Construction Season

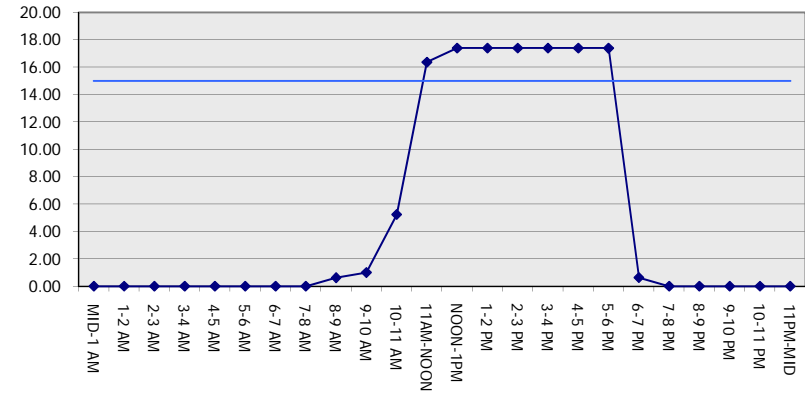
GRAPHICAL REPRESENTATION OF TRAFFIC MODEL INPUT AND OUTPUT

SATURDAY SOUTHBOUND DIRECTION

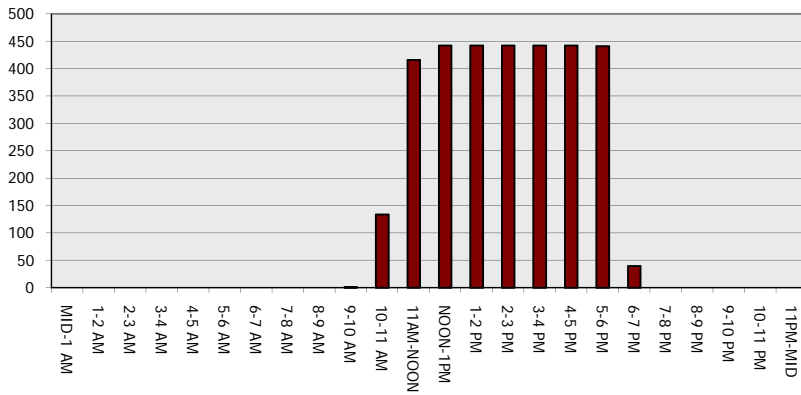
Main Route - Traffic Demand (Vehicles Per Hour)



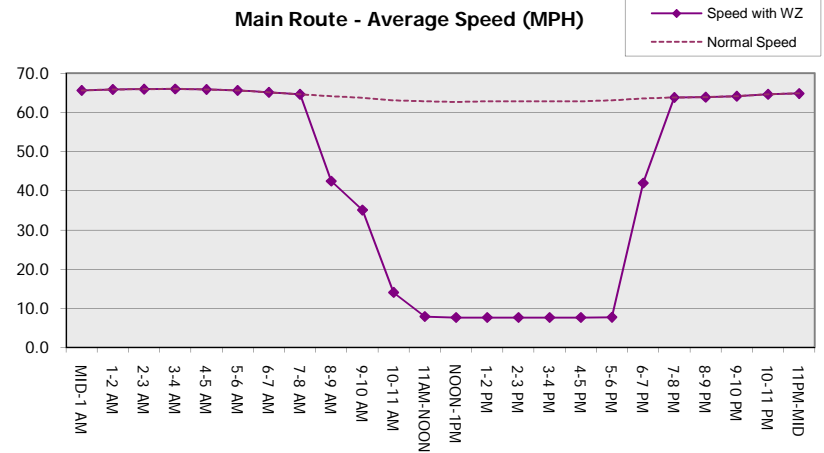
Main Route Average Delay Per Vehicle (Minutes)



Main Route - Average Queue Length (Vehicles)



Main Route - Average Speed (MPH)



USH 41: CTH AAA TO CTH G (BROWN COUNTY) OFF-PEAK DAY CLOSURE NO DIVERSION ROUTE (MAX QUEUE METHOD)	OCTOBER
	Analyzed for 2009 Construction Season

SUMMARY OF TRAFFIC MODEL OUTPUT

SATURDAY NORTHBOUND DIRECTION

TIME OF DAY	FLOWS AND CAPACITY IN VEH/HR						AVERAGE SPEEDS IN MPH			
	MAIN ROUTE		SITE CAPA CITY	FLOW		AV.DEL PER VEH (MINS)	AVERAGE QUEUE (VEH)	MAIN ROUTE		SITE
	DEMAND FLOW	PCT HEAVY		MAIN ROUTE	'DIVER TED'			WITHOUT WORK ZONE	WITH WORK ZONE	
MID-1 AM	326	0.0	OFF	326	0	0.00	0	65.8	65.8	65.8
1-2 AM	183	0.0	OFF	183	0	0.00	0	66.1	66.1	66.1
2-3 AM	181	0.0	OFF	181	0	0.00	0	66.1	66.1	66.1
3-4 AM	153	0.0	OFF	153	0	0.00	0	66.1	66.1	66.1
4-5 AM	217	0.0	OFF	217	0	0.00	0	66.0	66.0	66.0
5-6 AM	345	0.0	OFF	345	0	0.00	0	65.8	65.8	65.8
6-7 AM	590	0.0	OFF	590	0	0.00	0	65.3	65.3	65.3
7-8 AM	1000	0.0	OFF	1000	0	0.00	0	64.5	64.5	64.5
8-9 AM	1474	0.0	1499	1474	0	1.20	8	63.7	32.2	32.1
9-10 AM	1753	0.0	1500	1753	0	5.87	146	63.1	13.0	30.8
10-11 AM	1930	0.0	1500	1686	244	16.21+	412	62.8	7.9	30.8
11AM-NOON	2143	0.0	1499	1493	650	17.41+	443	62.4	7.6	30.8
NOON-1PM	2125	0.0	1499	1494	630	17.41+	443	62.4	7.6	30.8
1-2 PM	1958	0.0	1499	1496	462	17.39+	442	62.7	7.6	30.8
2-3 PM	1897	0.0	1499	1497	401	17.39+	442	62.8	7.6	30.8
3-4 PM	1956	0.0	1499	1498	459	17.39+	442	62.7	7.6	30.8
4-5 PM	2085	0.0	1499	1498	587	17.40+	442	62.5	7.6	30.8
5-6 PM	2006	0.0	1499	1499	507	17.40+	442	62.7	7.6	30.8
6-7 PM	1900	0.0	OFF	1900	0	0.73	47	62.8	39.6	39.6
7-8 PM	1397	0.0	OFF	1397	0	0.00	0	63.8	63.8	63.8
8-9 PM	1135	0.0	OFF	1135	0	0.00	0	64.3	64.3	64.3
9-10 PM	984	0.0	OFF	984	0	0.00	0	64.5	64.5	64.5
10-11 PM	705	0.0	OFF	705	0	0.00	0	65.1	65.1	65.1
11PM-MID	487	0.0	OFF	487	0	0.00	0	65.5	65.5	65.5

"OFF" INDICATES NO ROAD WORK (ALL LANES OPEN TO TRAFFIC)

+ INDICATES QUEUEING EXCEEDS USER-SPECIFIED MAXIMUM LIMIT

----- SITE BREAKDOWN DELAYS -----	
BREAKDOWN DURATION (MINS)	0
RANGE OF QUEUE DELAY - MIN (VEH-H) MAX	0.0
AV BREAKDOWNS PER DAY	0.00
AV QUEUE DELAY/DAY (VEH-H)	0.0
AV TOTAL DELAY/DAY (VEH-H)	0.0

----- SITE ACCIDENT DELAYS -----	
BREAKDOWN DURATION (MINS)	0
RANGE OF QUEUE DELAY - MIN (VEH-H) MAX	0
AV BREAKDOWNS PER DAY	0
AV QUEUE DELAY/DAY (VEH-H)	0
AV TOTAL DELAY/DAY (VEH-H)	0

AVERAGE ACCIDENT NUMBERS (PIA/DAY)	
MAIN ROUTE WITHOUT WORKS	0.0060
MAIN ROUTE WITH WORKS	0.0041
'DIVERSION'	0.0019

PIA: Personal Injury Accidents

ECONOMIC IMPACT ON ROAD USERS	
ROAD USER COSTS PER DAY	\$79,550
CONGESTED HOURS PER DAY*	8

*Delays Exceeding User-Specified Maximum

**USH 41: CTH AAA TO CTH G (BROWN COUNTY)
OFF-PEAK DAY CLOSURE
NO DIVERSION ROUTE (MAX QUEUE METHOD)**

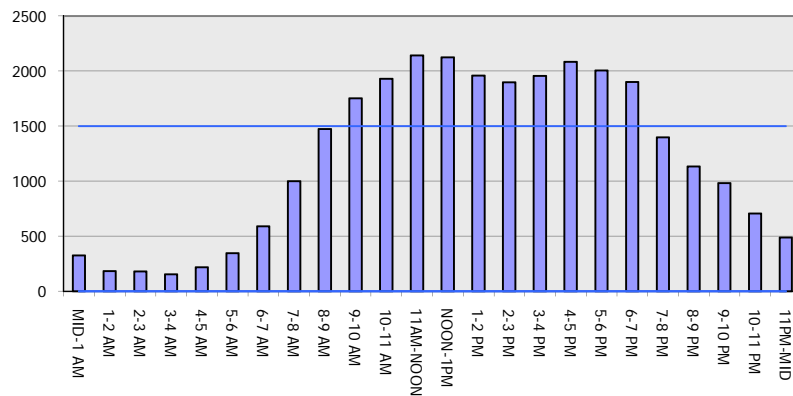
OCTOBER

Analyzed for 2009
Construction Season

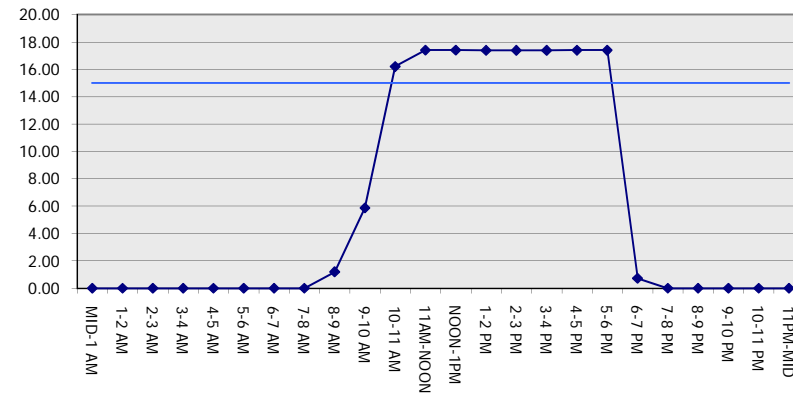
GRAPHICAL REPRESENTATION OF TRAFFIC MODEL INPUT AND OUTPUT

SATURDAY NORTHBOUND DIRECTION

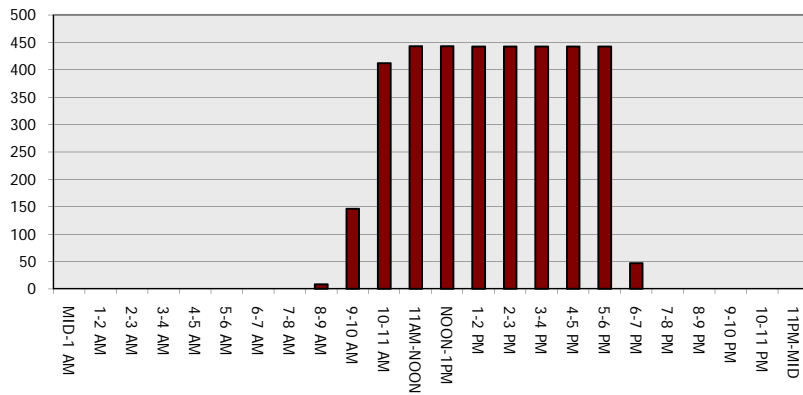
Main Route - Traffic Demand (Vehicles Per Hour)



Main Route Average Delay Per Vehicle (Minutes)



Main Route - Average Queue Length (Vehicles)



Main Route - Average Speed (MPH)

