

<b>USH 41: STH 29 TO CTH AAA (BROWN COUNTY)</b> <b>OFF-PEAK DAY CLOSURE</b> <b>NO DIVERSION ROUTE (MAX QUEUE METHOD)</b>	<b>OCTOBER</b>
	Analyzed for 2009 Construction Season

**SUMMARY OF TRAFFIC MODEL OUTPUT**

FRIDAY      SOUTHBOUND DIRECTION

TIME OF DAY	FLOWS AND CAPACITY IN VEH/HR						AVERAGE SPEEDS IN MPH			
	MAIN ROUTE		SITE CAPA CITY	FLOW		AV.DEL PER VEH (MINS)	AVERAGE QUEUE (VEH)	MAIN ROUTE		SITE
	DEMAND FLOW	PCT HEAVY		MAIN ROUTE	'DIVER TED'			WITHOUT WORK ZONE	WITH WORK ZONE	
MID-1 AM	264	0.0	OFF	264	0	0.00	0	65.9	65.9	65.9
1-2 AM	216	0.0	OFF	216	0	0.00	0	66.0	66.0	66.0
2-3 AM	206	0.0	OFF	206	0	0.00	0	66.0	66.0	66.0
3-4 AM	208	0.0	OFF	208	0	0.00	0	66.0	66.0	66.0
4-5 AM	529	0.0	OFF	529	0	0.00	0	65.4	65.4	65.4
5-6 AM	1350	0.0	OFF	1350	0	0.00	0	63.8	63.8	63.8
6-7 AM	2651	0.0	OFF	2651	0	0.00	0	59.4	59.4	59.4
7-8 AM	3444	0.0	OFF	3444	0	0.00	0	51.2	51.2	51.2
8-9 AM	2211	0.0	OFF	2211	0	0.00	0	62.3	62.3	62.3
9-10 AM	2042	0.0	OFF	2042	0	0.00	0	62.6	62.6	62.6
10-11 AM	2187	0.0	1499	1827	360	10.00+	277	62.3	19.7	31.0
11AM-NOON	2485	0.0	1499	1500	985	15.63+	399	61.0	14.2	31.3
NOON-1PM	2734	0.0	1500	1500	1234	15.42+	400	58.5	14.2	31.3
1-2 PM	2755	0.0	1500	1500	1255	15.41+	400	58.2	14.2	31.3
2-3 PM	3064	0.0	1500	1500	1564	15.12+	400	55.1	14.2	31.3
3-4 PM	3426	0.0	OFF	3426	0	1.79	93	51.4	38.9	38.9
4-5 PM	3715	0.0	OFF	3715	0	0.00	0	48.4	48.4	48.4
5-6 PM	3265	0.0	OFF	3265	0	0.00	0	53.0	53.0	53.0
6-7 PM	2052	0.0	OFF	2052	0	0.00	0	62.5	62.5	62.5
7-8 PM	1496	0.0	OFF	1496	0	0.00	0	63.6	63.6	63.6
8-9 PM	1272	0.0	OFF	1272	0	0.00	0	64.0	64.0	64.0
9-10 PM	1218	0.0	OFF	1218	0	0.00	0	64.1	64.1	64.1
10-11 PM	1002	0.0	OFF	1002	0	0.00	0	64.5	64.5	64.5
11PM-MID	645	0.0	OFF	645	0	0.00	0	65.2	65.2	65.2

"OFF" INDICATES NO ROAD WORK (ALL LANES OPEN TO TRAFFIC)

+ INDICATES QUEUEING EXCEEDS USER-SPECIFIED MAXIMUM LIMIT

*----- SITE BREAKDOWN DELAYS -----*	
BREAKDOWN DURATION (MINS)	0
RANGE OF QUEUE DELAY - MIN (VEH-H) MAX	0.0
AV BREAKDOWNS PER DAY	0.00
AV QUEUE DELAY/DAY (VEH-H)	0.0
AV TOTAL DELAY/DAY (VEH-H)	0.0

*----- SITE ACCIDENT DELAYS -----*	
BREAKDOWN DURATION (MINS)	0
RANGE OF QUEUE DELAY - MIN (VEH-H) MAX	0
AV BREAKDOWNS PER DAY	0
AV QUEUE DELAY/DAY (VEH-H)	0
AV TOTAL DELAY/DAY (VEH-H)	0

AVERAGE ACCIDENT NUMBERS (PIA/DAY)	
MAIN ROUTE WITHOUT WORKS	0.0339
MAIN ROUTE WITH WORKS	0.0293
'DIVERSION'	0.0095
<small>PIA: Personal Injury Accidents</small>	
IMPACTS ON ROAD USERS	
ROAD USER COSTS PER DAY	\$38,454
CONGESTED HOURS PER DAY*	5

\*Delays Exceeding User-Specified Maximum

**USH 41: STH 29 TO CTH AAA (BROWN COUNTY)  
OFF-PEAK DAY CLOSURE  
NO DIVERSION ROUTE (MAX QUEUE METHOD)**

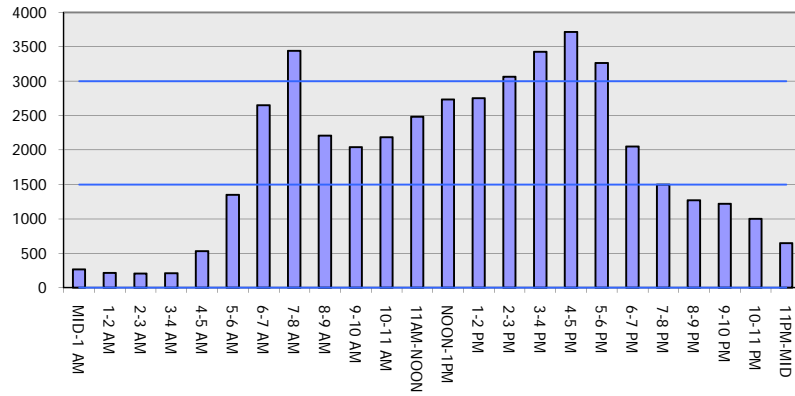
**OCTOBER**

Analyzed for 2009  
Construction Season

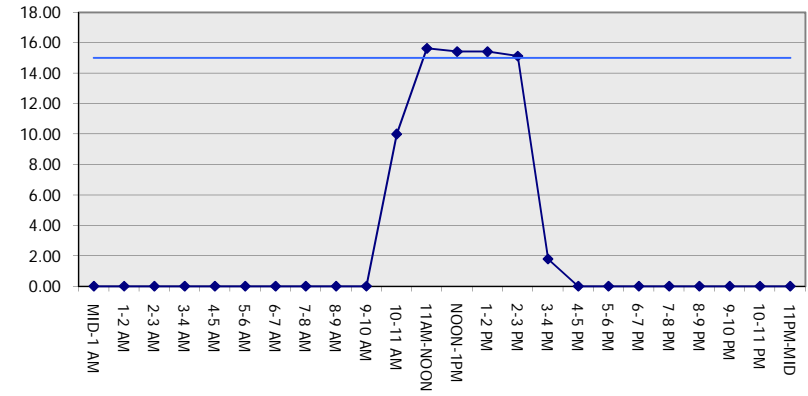
**GRAPHICAL REPRESENTATION OF TRAFFIC MODEL INPUT AND OUTPUT**

**FRIDAY SOUTHBOUND DIRECTION**

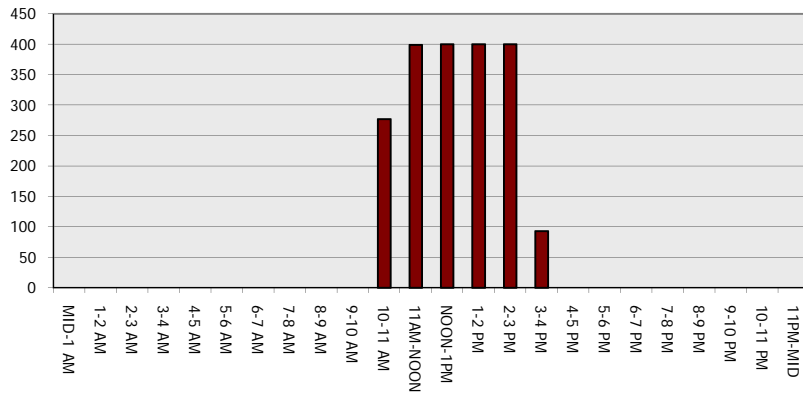
**Main Route - Traffic Demand (Vehicles Per Hour)**



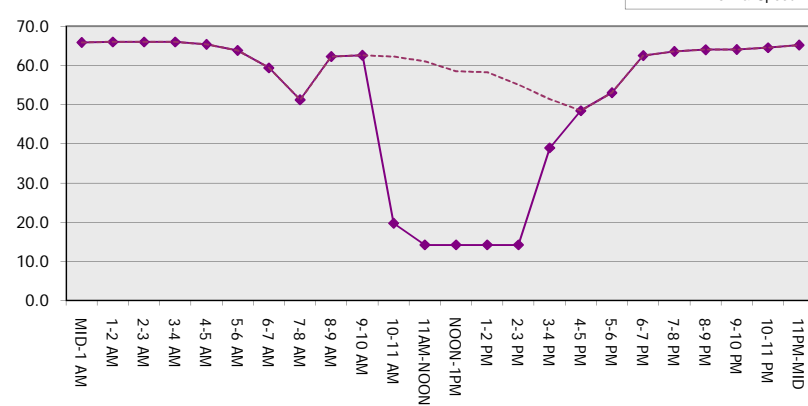
**Main Route Average Delay Per Vehicle (Minutes)**



**Main Route - Average Queue Length (Vehicles)**



**Main Route - Average Speed (MPH)**



<b>USH 41: STH 29 TO CTH AAA (BROWN COUNTY)</b> <b>OFF-PEAK DAY CLOSURE</b> <b>NO DIVERSION ROUTE (MAX QUEUE METHOD)</b>	<b>OCTOBER</b>
	Analyzed for 2009 Construction Season

**SUMMARY OF TRAFFIC MODEL OUTPUT**

FRIDAY NORTHBOUND DIRECTION

TIME OF DAY	FLOWS AND CAPACITY IN VEH/HR						AVERAGE SPEEDS IN MPH			
	MAIN ROUTE		SITE CAPA CITY	FLOW		AV.DEL PER VEH (MINS)	AVERAGE QUEUE (VEH)	MAIN ROUTE		SITE
	DEMAND FLOW	PCT HEAVY		MAIN ROUTE	'DIVER TED'			WITHOUT WORK ZONE	WITH WORK ZONE	
MID-1 AM	270	0.0	OFF	270	0	0.00	0	65.9	65.9	65.9
1-2 AM	180	0.0	OFF	180	0	0.00	0	66.1	66.1	66.1
2-3 AM	188	0.0	OFF	188	0	0.00	0	66.0	66.0	66.0
3-4 AM	202	0.0	OFF	202	0	0.00	0	66.0	66.0	66.0
4-5 AM	370	0.0	OFF	370	0	0.00	0	65.7	65.7	65.7
5-6 AM	889	0.0	OFF	889	0	0.00	0	64.7	64.7	64.7
6-7 AM	2188	0.0	OFF	2188	0	0.00	0	62.3	62.3	62.3
7-8 AM	3571	0.0	OFF	3571	0	0.00	0	49.9	49.9	49.9
8-9 AM	2666	0.0	OFF	2666	0	0.00	0	59.2	59.2	59.2
9-10 AM	2234	0.0	OFF	2234	0	0.00	0	62.2	62.2	62.2
10-11 AM	2356	0.0	1499	1904	452	11.29+	301	62.0	18.1	30.8
11AM-NOON	2614	0.0	1500	1500	1114	15.56+	400	59.7	14.1	30.8
NOON-1PM	2760	0.0	1500	1500	1260	15.44+	400	58.2	14.1	30.8
1-2 PM	2755	0.0	1500	1500	1255	15.44+	400	58.2	14.1	30.8
2-3 PM	3215	0.0	1500	1500	1715	15.01+	400	53.5	14.1	30.8
3-4 PM	3758	0.0	OFF	3758	0	4.58	283	48.0	27.2	27.2
4-5 PM	4236	0.0	OFF	4236	0	3.85	280	43.1	27.3	27.3
5-6 PM	3893	0.0	OFF	3893	0	5.32	344	46.6	25.0	25.0
6-7 PM	2883	0.0	OFF	2883	0	0.85	37	56.9	48.7	48.7
7-8 PM	1868	0.0	OFF	1868	0	0.00	0	62.9	62.9	62.9
8-9 PM	1450	0.0	OFF	1450	0	0.00	0	63.7	63.7	63.7
9-10 PM	1194	0.0	OFF	1194	0	0.00	0	64.1	64.1	64.1
10-11 PM	888	0.0	OFF	888	0	0.00	0	64.7	64.7	64.7
11PM-MID	638	0.0	OFF	638	0	0.00	0	65.2	65.2	65.2

"OFF" INDICATES NO ROAD WORK (ALL LANES OPEN TO TRAFFIC)

+ INDICATES QUEUEING EXCEEDS USER-SPECIFIED MAXIMUM LIMIT

*----- SITE BREAKDOWN DELAYS -----*	
BREAKDOWN DURATION (MINS)	0
RANGE OF QUEUE DELAY - MIN (VEH-H) MAX	0.0
AV BREAKDOWNS PER DAY	0.00
AV QUEUE DELAY/DAY (VEH-H)	0.0
AV TOTAL DELAY/DAY (VEH-H)	0.0

*----- SITE ACCIDENT DELAYS -----*	
BREAKDOWN DURATION (MINS)	0
RANGE OF QUEUE DELAY - MIN (VEH-H) MAX	0
AV BREAKDOWNS PER DAY	0
AV QUEUE DELAY/DAY (VEH-H)	0
AV TOTAL DELAY/DAY (VEH-H)	0

AVERAGE ACCIDENT NUMBERS (PIA/DAY)	
MAIN ROUTE WITHOUT WORKS	0.0361
MAIN ROUTE WITH WORKS	0.0311
'DIVERSION'	0.0102

PIA: Personal Injury Accidents

ECONOMIC IMPACT ON ROAD USERS	
ROAD USER COSTS PER DAY	\$50,038
CONGESTED HOURS PER DAY*	5

\*Delays Exceeding User-Specified Maximum

**USH 41: STH 29 TO CTH AAA (BROWN COUNTY)  
OFF-PEAK DAY CLOSURE  
NO DIVERSION ROUTE (MAX QUEUE METHOD)**

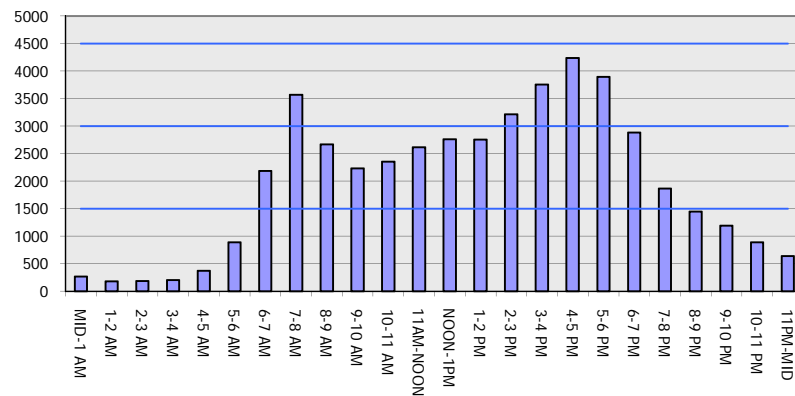
**OCTOBER**

Analyzed for 2009  
Construction Season

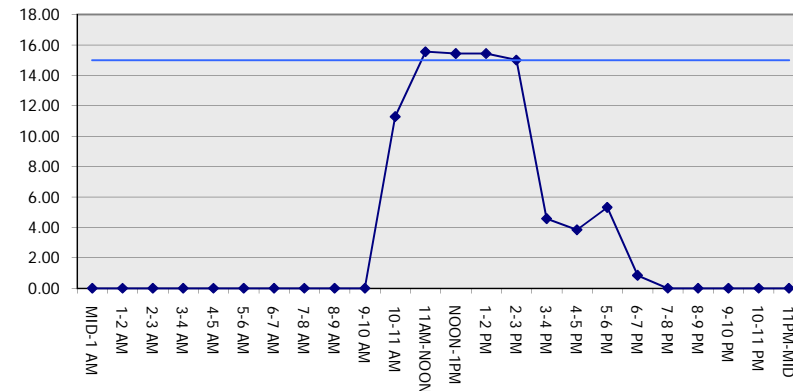
**GRAPHICAL REPRESENTATION OF TRAFFIC MODEL INPUT AND OUTPUT**

**FRIDAY NORTHBOUND DIRECTION**

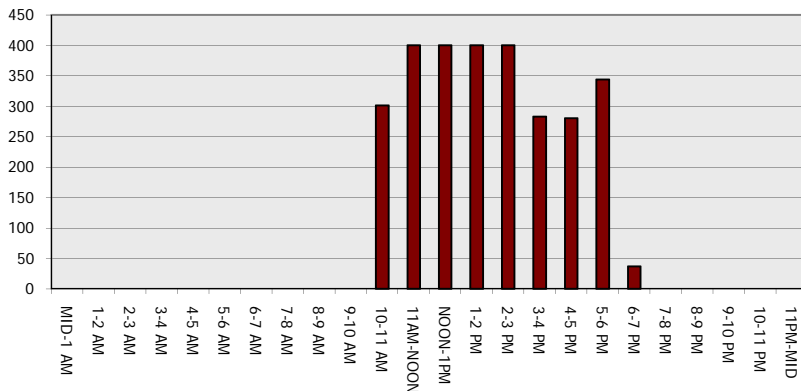
**Main Route - Traffic Demand (Vehicles Per Hour)**



**Main Route Average Delay Per Vehicle (Minutes)**



**Main Route - Average Queue Length (Vehicles)**



**Main Route - Average Speed (MPH)**

