

<b>USH 41: CTH G TO CTH F (BROWN COUNTY)</b> <b>OFF-PEAK DAY CLOSURE</b> <b>NO DIVERSION ROUTE (MAX QUEUE METHOD)</b>	<b>OCTOBER</b>
	Analyzed for 2009 Construction Season

**SUMMARY OF TRAFFIC MODEL OUTPUT**

SUNDAY SOUTHBOUND DIRECTION

TIME OF DAY	FLOWS AND CAPACITY IN VEH/HR						AVERAGE SPEEDS IN MPH			
	MAIN ROUTE		SITE CAPA CITY	FLOW		AV.DEL PER VEH (MINS)	AVERAGE QUEUE (VEH)	MAIN ROUTE		SITE
	DEMAND FLOW	PCT HEAVY		MAIN ROUTE	'DIVER TED'			WITHOUT WORK ZONE	WITH WORK ZONE	
MID-1 AM	427	0.0	OFF	427	0	0.00	0	65.6	65.6	65.6
1-2 AM	271	0.0	OFF	271	0	0.00	0	65.9	65.9	65.9
2-3 AM	260	0.0	OFF	260	0	0.00	0	65.9	65.9	65.9
3-4 AM	168	0.0	OFF	168	0	0.00	0	66.1	66.1	66.1
4-5 AM	144	0.0	OFF	144	0	0.00	0	66.1	66.1	66.1
5-6 AM	184	0.0	OFF	184	0	0.00	0	66.0	66.0	66.0
6-7 AM	294	0.0	OFF	294	0	0.00	0	65.8	65.8	65.8
7-8 AM	359	0.0	OFF	359	0	0.00	0	65.7	65.7	65.7
8-9 AM	642	0.0	OFF	642	0	0.00	0	65.2	65.2	65.2
9-10 AM	983	0.0	1499	983	0	0.52	0	64.6	49.9	41.7
10-11 AM	1450	0.0	1499	1450	0	1.08	4	63.7	39.7	32.3
11AM-NOON	1679	0.0	1500	1679	0	4.12	95	63.3	19.3	30.8
NOON-1PM	1841	0.0	1500	1723	118	13.51+	345	63.0	9.6	30.8
1-2 PM	1888	0.0	1499	1502	386	16.96+	430	62.8	8.6	30.8
2-3 PM	1995	0.0	1500	1502	493	16.96+	431	62.7	8.6	30.8
3-4 PM	2280	0.0	1500	1501	779	16.97+	431	62.2	8.6	30.8
4-5 PM	2167	0.0	1500	1501	666	16.97+	431	62.3	8.6	30.8
5-6 PM	1993	0.0	1500	1501	492	16.96+	431	62.7	8.6	30.8
6-7 PM	1503	0.0	1500	1446	56	16.40+	415	63.6	8.7	30.8
7-8 PM	1108	0.0	OFF	1108	0	0.38	24	64.3	52.9	52.9
8-9 PM	805	0.0	OFF	805	0	0.00	0	64.9	64.9	64.9
9-10 PM	598	0.0	OFF	598	0	0.00	0	65.3	65.3	65.3
10-11 PM	593	0.0	OFF	593	0	0.00	0	65.3	65.3	65.3
11PM-MID	1121	0.0	OFF	1121	0	0.00	0	64.3	64.3	64.3

"OFF" INDICATES NO ROAD WORK (ALL LANES OPEN TO TRAFFIC)

+ INDICATES QUEUEING EXCEEDS USER-SPECIFIED MAXIMUM LIMIT

*----- SITE BREAKDOWN DELAYS -----*	
BREAKDOWN DURATION (MINS)	0
RANGE OF QUEUE DELAY - MIN (VEH-H) MAX	0.0
AV BREAKDOWNS PER DAY	0.00
AV QUEUE DELAY/DAY (VEH-H)	0.0
AV TOTAL DELAY/DAY (VEH-H)	0.0

*----- SITE ACCIDENT DELAYS -----*	
BREAKDOWN DURATION (MINS)	0
RANGE OF QUEUE DELAY - MIN (VEH-H) MAX	0
AV BREAKDOWNS PER DAY	0
AV QUEUE DELAY/DAY (VEH-H)	0
AV TOTAL DELAY/DAY (VEH-H)	0

AVERAGE ACCIDENT NUMBERS (PIA/DAY)	
MAIN ROUTE WITHOUT WORKS	0.0075
MAIN ROUTE WITH WORKS	0.0056
'DIVERSION'	0.0021
<small>PIA: Personal Injury Accidents</small>	
IMPACTS ON ROAD USERS	
ROAD USER COSTS PER DAY	\$65,171
CONGESTED HOURS PER DAY*	7

\*Delays Exceeding User-Specified Maximum

**USH 41: CTH G TO CTH F (BROWN COUNTY)  
OFF-PEAK DAY CLOSURE  
NO DIVERSION ROUTE (MAX QUEUE METHOD)**

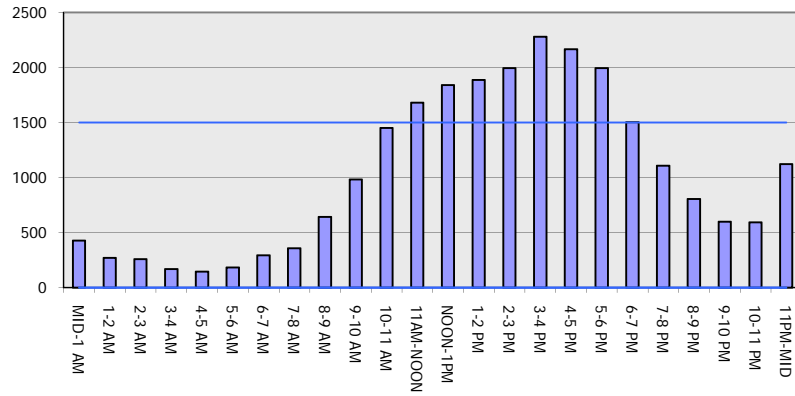
**OCTOBER**

Analyzed for 2009  
Construction Season

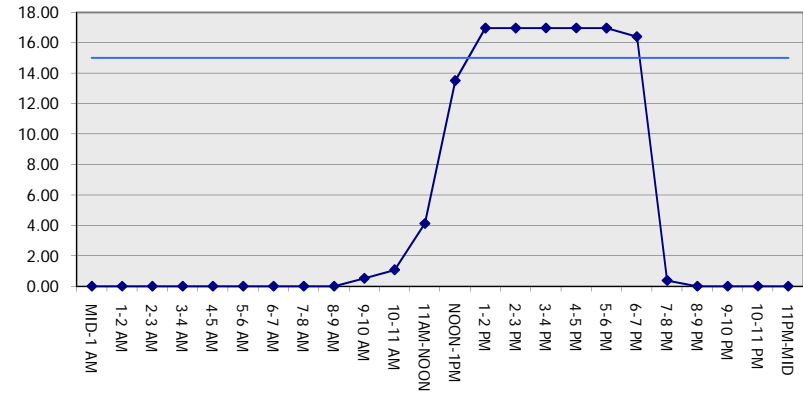
**GRAPHICAL REPRESENTATION OF TRAFFIC MODEL INPUT AND OUTPUT**

**SUNDAY SOUTHBOUND DIRECTION**

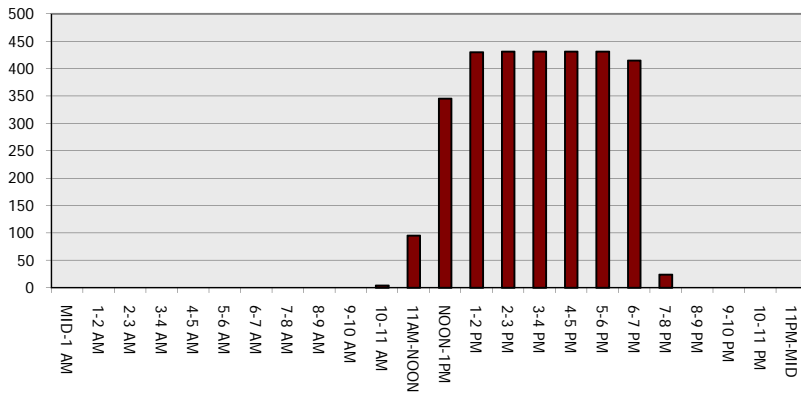
**Main Route - Traffic Demand (Vehicles Per Hour)**



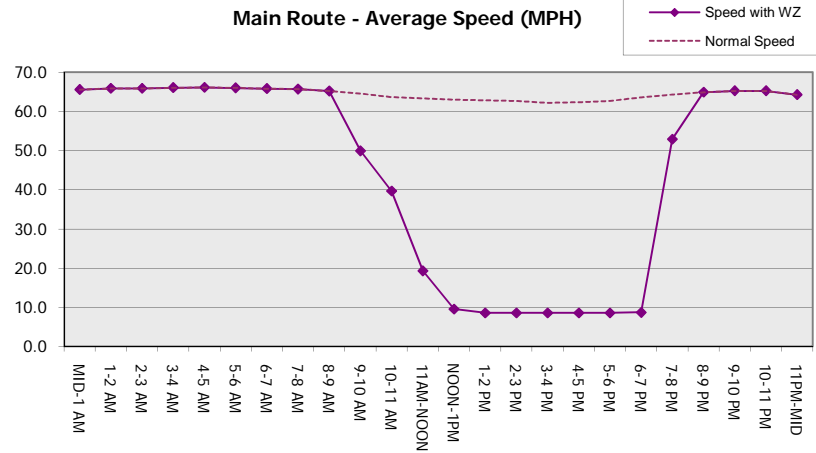
**Main Route Average Delay Per Vehicle (Minutes)**



**Main Route - Average Queue Length (Vehicles)**



**Main Route - Average Speed (MPH)**



<b>USH 41: CTH G TO CTH F (BROWN COUNTY)</b> <b>OFF-PEAK DAY CLOSURE</b> <b>NO DIVERSION ROUTE (MAX QUEUE METHOD)</b>	<b>OCTOBER</b>
	Analyzed for 2009 Construction Season

**SUMMARY OF TRAFFIC MODEL OUTPUT**

SUNDAY NORTHBOUND DIRECTION

TIME OF DAY	FLOWS AND CAPACITY IN VEH/HR						AVERAGE SPEEDS IN MPH			
	MAIN ROUTE		SITE CAPA CITY	FLOW		AV.DEL PER VEH (MINS)	AVERAGE QUEUE (VEH)	MAIN ROUTE		SITE
	DEMAND FLOW	PCT HEAVY		MAIN ROUTE	'DIVER TED'			WITHOUT WORK ZONE	WITH WORK ZONE	
MID-1 AM	293	0.0	OFF	293	0	0.00	0	65.8	65.8	65.8
1-2 AM	176	0.0	OFF	176	0	0.00	0	66.1	66.1	66.1
2-3 AM	188	0.0	OFF	188	0	0.00	0	66.0	66.0	66.0
3-4 AM	137	0.0	OFF	137	0	0.00	0	66.1	66.1	66.1
4-5 AM	112	0.0	OFF	112	0	0.00	0	66.2	66.2	66.2
5-6 AM	216	0.0	OFF	216	0	0.00	0	66.0	66.0	66.0
6-7 AM	302	0.0	OFF	302	0	0.00	0	65.8	65.8	65.8
7-8 AM	536	0.0	OFF	536	0	0.00	0	65.4	65.4	65.4
8-9 AM	1020	0.0	OFF	1020	0	0.00	0	64.5	64.5	64.5
9-10 AM	1567	0.0	1499	1567	0	1.58	19	63.5	33.8	31.1
10-11 AM	1744	0.0	1500	1744	0	7.92	198	63.2	12.7	30.8
11AM-NOON	1636	0.0	1499	1602	34	15.62+	395	63.3	8.9	30.8
NOON-1PM	1457	0.0	1500	1457	0	16.13+	407	63.7	8.8	30.8
1-2 PM	1487	0.0	1500	1487	0	14.68+	368	63.6	9.1	30.8
2-3 PM	1668	0.0	1500	1561	107	16.37+	414	63.3	8.7	30.8
3-4 PM	1857	0.0	1499	1500	357	16.96+	430	62.9	8.6	30.8
4-5 PM	1895	0.0	1500	1500	395	16.96+	430	62.8	8.6	30.8
5-6 PM	1578	0.0	1500	1499	79	16.95+	429	63.5	8.6	30.8
6-7 PM	1251	0.0	1499	1251	0	12.74+	324	64.0	9.9	31.1
7-8 PM	922	0.0	OFF	922	0	0.09	5	64.6	61.6	61.6
8-9 PM	673	0.0	OFF	673	0	0.00	0	65.1	65.1	65.1
9-10 PM	448	0.0	OFF	448	0	0.00	0	65.6	65.6	65.6
10-11 PM	323	0.0	OFF	323	0	0.00	0	65.8	65.8	65.8
11PM-MID	232	0.0	OFF	232	0	0.00	0	66.0	66.0	66.0

"OFF" INDICATES NO ROAD WORK (ALL LANES OPEN TO TRAFFIC)

+ INDICATES QUEUEING EXCEEDS USER-SPECIFIED MAXIMUM LIMIT

*----- SITE BREAKDOWN DELAYS -----*	
BREAKDOWN DURATION (MINS)	0
RANGE OF QUEUE DELAY - MIN (VEH-H) MAX	0.0
AV BREAKDOWNS PER DAY	0.00
AV QUEUE DELAY/DAY (VEH-H)	0.0
AV TOTAL DELAY/DAY (VEH-H)	0.0

*----- SITE ACCIDENT DELAYS -----*	
BREAKDOWN DURATION (MINS)	0
RANGE OF QUEUE DELAY - MIN (VEH-H) MAX	0
AV BREAKDOWNS PER DAY	0
AV QUEUE DELAY/DAY (VEH-H)	0
AV TOTAL DELAY/DAY (VEH-H)	0

AVERAGE ACCIDENT NUMBERS (PIA/DAY)	
MAIN ROUTE WITHOUT WORKS	0.0066
MAIN ROUTE WITH WORKS	0.0053
'DIVERSION'	0.0007

PIA: Personal Injury Accidents

ECONOMIC IMPACT ON ROAD USERS	
ROAD USER COSTS PER DAY	\$61,501
CONGESTED HOURS PER DAY*	8

\*Delays Exceeding User-Specified Maximum

**USH 41: CTH G TO CTH F (BROWN COUNTY)  
OFF-PEAK DAY CLOSURE  
NO DIVERSION ROUTE (MAX QUEUE METHOD)**

**OCTOBER**

Analyzed for 2009  
Construction Season

**GRAPHICAL REPRESENTATION OF TRAFFIC MODEL INPUT AND OUTPUT**  
**SUNDAY NORTHBOUND DIRECTION**

