

<b>USH 41: CTH G TO CTH F (BROWN COUNTY)</b> <b>OFF-PEAK DAY CLOSURE</b> <b>NO DIVERSION ROUTE (MAX QUEUE METHOD)</b>	<b>OCTOBER</b>
	Analyzed for 2009 Construction Season

**SUMMARY OF TRAFFIC MODEL OUTPUT**

FRIDAY      SOUTHBOUND DIRECTION

TIME OF DAY	FLOWS AND CAPACITY IN VEH/HR						AVERAGE SPEEDS IN MPH				
	MAIN ROUTE		SITE CAPA CITY	FLOW		AV.DEL PER VEH (MINS)	AVERAGE QUEUE (VEH)	MAIN ROUTE		SITE	
	DEMAND FLOW	PCT HEAVY		MAIN ROUTE	'DIVER TED'			WITHOUT WORK ZONE	WITH WORK ZONE		
MID-1 AM	210	0.0	OFF	210	0	0.00	0	66.0	66.0	66.0	
1-2 AM	172	0.0	OFF	172	0	0.00	0	66.1	66.1	66.1	
2-3 AM	164	0.0	OFF	164	0	0.00	0	66.1	66.1	66.1	
3-4 AM	166	0.0	OFF	166	0	0.00	0	66.1	66.1	66.1	
4-5 AM	419	0.0	OFF	419	0	0.00	0	65.6	65.6	65.6	
5-6 AM	1072	0.0	OFF	1072	0	0.00	0	64.4	64.4	64.4	
6-7 AM	2105	0.0	OFF	2105	0	0.00	0	62.5	62.5	62.5	
7-8 AM	2734	0.0	OFF	2734	0	0.00	0	58.5	58.5	58.5	
8-9 AM	1755	0.0	OFF	1755	0	0.00	0	63.1	63.1	63.1	
9-10 AM	1621	0.0	OFF	1621	0	0.00	0	63.3	63.3	63.3	
10-11 AM	1737	0.0	1499	1737	0	4.29	107	63.2	19.1	30.8	
11AM-NOON	1972	0.0	1500	1708	265	15.14+	386	62.7	9.0	30.8	
NOON-1PM	2170	0.0	1499	1498	672	16.97+	431	62.3	8.6	30.8	
1-2 PM	2186	0.0	1499	1498	688	16.97+	431	62.3	8.6	30.8	
2-3 PM	2431	0.0	1499	1499	933	16.97+	432	61.6	8.6	30.8	
3-4 PM	2720	0.0	OFF	2720	0	1.29	75	58.6	35.3	35.3	
4-5 PM	2949	0.0	OFF	2949	0	0.00	0	56.3	56.3	56.3	
5-6 PM	2592	0.0	OFF	2592	0	0.00	0	59.9	59.9	59.9	
6-7 PM	1629	0.0	OFF	1629	0	0.00	0	63.3	63.3	63.3	
7-8 PM	1187	0.0	OFF	1187	0	0.00	0	64.1	64.1	64.1	
8-9 PM	1010	0.0	OFF	1010	0	0.00	0	64.5	64.5	64.5	
9-10 PM	967	0.0	OFF	967	0	0.00	0	64.6	64.6	64.6	
10-11 PM	796	0.0	OFF	796	0	0.00	0	64.9	64.9	64.9	
11PM-MID	513	0.0	OFF	513	0	0.00	0	65.5	65.5	65.5	

"OFF" INDICATES NO ROAD WORK (ALL LANES OPEN TO TRAFFIC)

+ INDICATES QUEUEING EXCEEDS USER-SPECIFIED MAXIMUM LIMIT

*----- SITE BREAKDOWN DELAYS -----*	
BREAKDOWN DURATION (MINS)	0
RANGE OF QUEUE DELAY - MIN (VEH-H) MAX	0.0
AV BREAKDOWNS PER DAY	0.00
AV QUEUE DELAY/DAY (VEH-H)	0.0
AV TOTAL DELAY/DAY (VEH-H)	0.0

*----- SITE ACCIDENT DELAYS -----*	
BREAKDOWN DURATION (MINS)	0
RANGE OF QUEUE DELAY - MIN (VEH-H) MAX	0
AV BREAKDOWNS PER DAY	0
AV QUEUE DELAY/DAY (VEH-H)	0
AV TOTAL DELAY/DAY (VEH-H)	0

AVERAGE ACCIDENT NUMBERS (PIA/DAY)	
MAIN ROUTE WITHOUT WORKS	0.0107
MAIN ROUTE WITH WORKS	0.0094
'DIVERSION'	0.0018
PIA: Personal Injury Accidents	
IMPACTS ON ROAD USERS	
ROAD USER COSTS PER DAY	\$34,126
CONGESTED HOURS PER DAY*	4

\*Delays Exceeding User-Specified Maximum

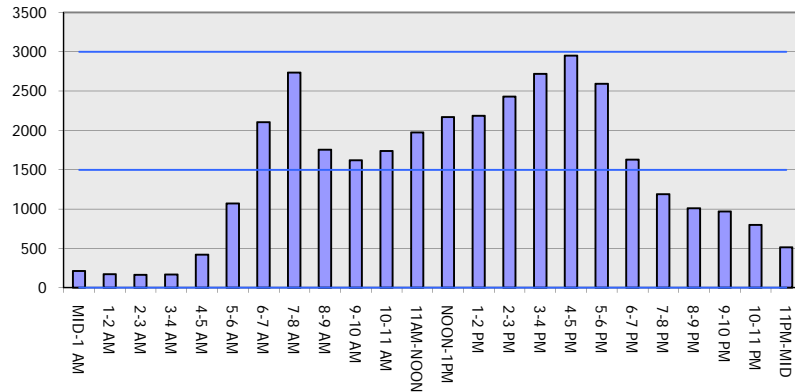
**USH 41: CTH G TO CTH F (BROWN COUNTY)  
OFF-PEAK DAY CLOSURE  
NO DIVERSION ROUTE (MAX QUEUE METHOD)**

**OCTOBER**

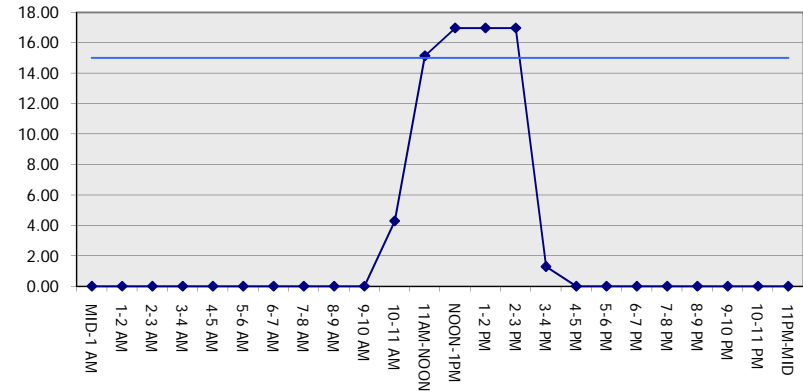
Analyzed for 2009  
Construction Season

**GRAPHICAL REPRESENTATION OF TRAFFIC MODEL INPUT AND OUTPUT**  
**FRIDAY SOUTHBOUND DIRECTION**

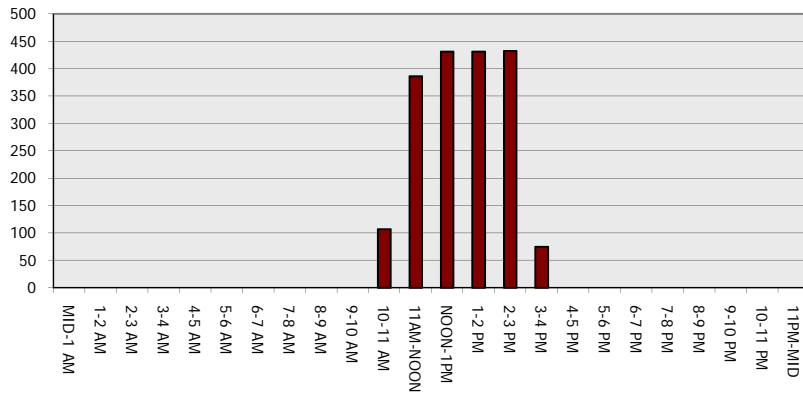
**Main Route - Traffic Demand (Vehicles Per Hour)**



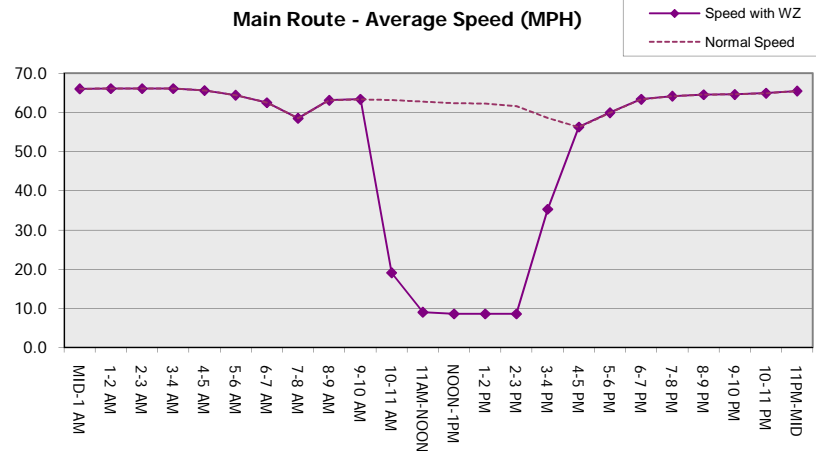
**Main Route Average Delay Per Vehicle (Minutes)**



**Main Route - Average Queue Length (Vehicles)**



**Main Route - Average Speed (MPH)**



<b>USH 41: CTH G TO CTH F (BROWN COUNTY)</b> <b>OFF-PEAK DAY CLOSURE</b> <b>NO DIVERSION ROUTE (MAX QUEUE METHOD)</b>	<b>OCTOBER</b>
	Analyzed for 2009 Construction Season

**SUMMARY OF TRAFFIC MODEL OUTPUT**

FRIDAY NORTHBOUND DIRECTION

TIME OF DAY	FLOWS AND CAPACITY IN VEH/HR						AVERAGE SPEEDS IN MPH			
	MAIN ROUTE		SITE CAPA CITY	FLOW		AV.DEL PER VEH (MINS)	AVERAGE QUEUE (VEH)	MAIN ROUTE		SITE
	DEMAND FLOW	PCT HEAVY		MAIN ROUTE	'DIVER TED'			WITHOUT WORK ZONE	WITH WORK ZONE	
MID-1 AM	214	0.0	OFF	214	0	0.00	0	66.0	66.0	66.0
1-2 AM	143	0.0	OFF	143	0	0.00	0	66.1	66.1	66.1
2-3 AM	149	0.0	OFF	149	0	0.00	0	66.1	66.1	66.1
3-4 AM	161	0.0	OFF	161	0	0.00	0	66.1	66.1	66.1
4-5 AM	293	0.0	OFF	293	0	0.00	0	65.8	65.8	65.8
5-6 AM	705	0.0	OFF	705	0	0.00	0	65.1	65.1	65.1
6-7 AM	1738	0.0	OFF	1738	0	0.00	0	63.2	63.2	63.2
7-8 AM	2835	0.0	OFF	2835	0	0.00	0	57.4	57.4	57.4
8-9 AM	2116	0.0	OFF	2116	0	0.00	0	62.5	62.5	62.5
9-10 AM	1774	0.0	OFF	1774	0	0.00	0	63.1	63.1	63.1
10-11 AM	1870	0.0	1499	1870	0	6.42	175	62.9	15.0	30.8
11AM-NOON	2074	0.0	1499	1511	563	16.97+	431	62.5	8.6	30.8
NOON-1PM	2191	0.0	1500	1509	682	16.97+	431	62.3	8.6	30.8
1-2 PM	2186	0.0	1500	1507	679	16.97+	431	62.3	8.6	30.8
2-3 PM	2552	0.0	1500	1523	1029	17.00+	434	60.4	8.5	30.8
3-4 PM	2983	0.0	OFF	2983	0	1.48	87	56.0	32.5	32.5
4-5 PM	3362	0.0	OFF	3362	0	0.00	0	52.0	52.0	52.0
5-6 PM	3090	0.0	OFF	3090	0	0.00	0	54.8	54.8	54.8
6-7 PM	2288	0.0	OFF	2288	0	0.00	0	62.1	62.1	62.1
7-8 PM	1483	0.0	OFF	1483	0	0.00	0	63.6	63.6	63.6
8-9 PM	1151	0.0	OFF	1151	0	0.00	0	64.2	64.2	64.2
9-10 PM	948	0.0	OFF	948	0	0.00	0	64.6	64.6	64.6
10-11 PM	705	0.0	OFF	705	0	0.00	0	65.1	65.1	65.1
11PM-MID	506	0.0	OFF	506	0	0.00	0	65.5	65.5	65.5

"OFF" INDICATES NO ROAD WORK (ALL LANES OPEN TO TRAFFIC)

+ INDICATES QUEUEING EXCEEDS USER-SPECIFIED MAXIMUM LIMIT

BREAKDOWN DURATION (MINS)	0
RANGE OF QUEUE DELAY - MIN (VEH-H) MAX	0.0
AV BREAKDOWNS PER DAY	0.00
AV QUEUE DELAY/DAY (VEH-H)	0.0
AV TOTAL DELAY/DAY (VEH-H)	0.0

BREAKDOWN DURATION (MINS)	0
RANGE OF QUEUE DELAY - MIN (VEH-H) MAX	0
AV BREAKDOWNS PER DAY	0
AV QUEUE DELAY/DAY (VEH-H)	0
AV TOTAL DELAY/DAY (VEH-H)	0

MAIN ROUTE WITHOUT WORKS	0.0114
MAIN ROUTE WITH WORKS	0.0099
'DIVERSION'	0.0021

PIA: Personal Injury Accidents

ROAD USER COSTS PER DAY	\$37,033
CONGESTED HOURS PER DAY*	4

\*Delays Exceeding User-Specified Maximum

**USH 41: CTH G TO CTH F (BROWN COUNTY)  
OFF-PEAK DAY CLOSURE  
NO DIVERSION ROUTE (MAX QUEUE METHOD)**

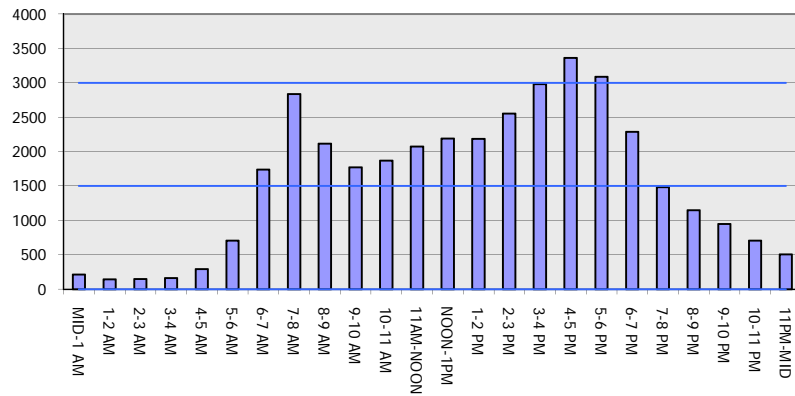
**OCTOBER**

Analyzed for 2009  
Construction Season

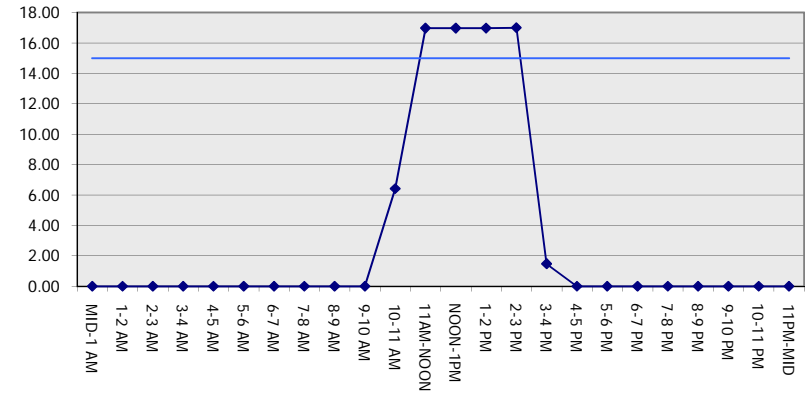
**GRAPHICAL REPRESENTATION OF TRAFFIC MODEL INPUT AND OUTPUT**

**FRIDAY NORTHBOUND DIRECTION**

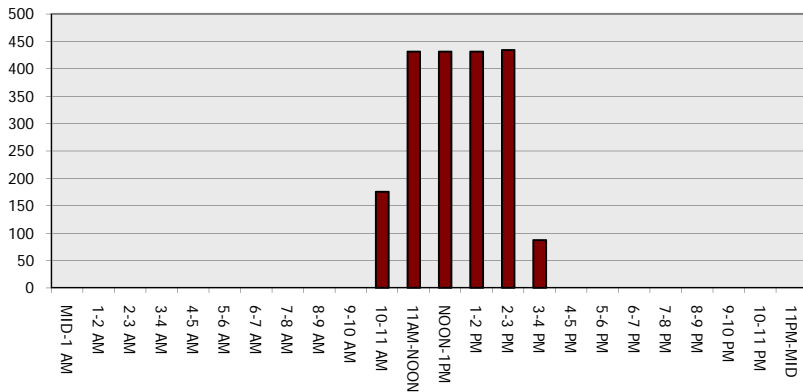
**Main Route - Traffic Demand (Vehicles Per Hour)**



**Main Route Average Delay Per Vehicle (Minutes)**



**Main Route - Average Queue Length (Vehicles)**



**Main Route - Average Speed (MPH)**

