

USH 41: CTH G TO CTH F (BROWN COUNTY) OFF-PEAK DAY CLOSURE NO DIVERSION ROUTE (MAX QUEUE METHOD)	MAY
	Analyzed for 2009 Construction Season

SUMMARY OF TRAFFIC MODEL OUTPUT

SATURDAY SOUTHBOUND DIRECTION

TIME OF DAY	FLOWS AND CAPACITY IN VEH/HR						AVERAGE SPEEDS IN MPH				
	MAIN ROUTE		SITE CAPA CITY	FLOW		AV.DEL PER VEH (MINS)	AVERAGE QUEUE (VEH)	MAIN ROUTE		SITE	
	DEMAND FLOW	PCT HEAVY		MAIN ROUTE	'DIVER TED'			WITHOUT WORK ZONE	WITH WORK ZONE		
MID-1 AM	352	0.0	OFF	352	0	0.00	0	65.7	65.7	65.7	
1-2 AM	261	0.0	OFF	261	0	0.00	0	65.9	65.9	65.9	
2-3 AM	221	0.0	OFF	221	0	0.00	0	66.0	66.0	66.0	
3-4 AM	168	0.0	OFF	168	0	0.00	0	66.1	66.1	66.1	
4-5 AM	192	0.0	OFF	192	0	0.00	0	66.0	66.0	66.0	
5-6 AM	323	0.0	OFF	323	0	0.00	0	65.8	65.8	65.8	
6-7 AM	548	0.0	OFF	548	0	0.00	0	65.4	65.4	65.4	
7-8 AM	865	0.0	OFF	865	0	0.00	0	64.8	64.8	64.8	
8-9 AM	1066	0.0	1500	1066	0	0.53	0	64.4	49.7	41.4	
9-10 AM	1281	0.0	1499	1281	0	0.74	0	64.0	45.3	36.1	
10-11 AM	1501	0.0	1499	1501	0	1.16	4	63.6	38.6	31.2	
11AM-NOON	1580	0.0	1500	1580	0	2.93	54	63.5	24.2	30.8	
NOON-1PM	1643	0.0	1500	1643	0	7.16	170	63.3	13.2	30.8	
1-2 PM	1581	0.0	1499	1581	0	11.49	283	63.5	10.2	30.8	
2-3 PM	1615	0.0	1500	1615	0	14.98+	377	63.4	9.1	30.8	
3-4 PM	1672	0.0	1499	1499	173	16.95+	430	63.3	8.6	30.8	
4-5 PM	1639	0.0	1499	1499	140	16.95+	429	63.3	8.6	30.8	
5-6 PM	1514	0.0	1499	1483	31	16.88+	427	63.6	8.6	30.8	
6-7 PM	1304	0.0	OFF	1304	0	0.51	32	64.0	49.7	49.7	
7-8 PM	1028	0.0	OFF	1028	0	0.00	0	64.5	64.5	64.5	
8-9 PM	936	0.0	OFF	936	0	0.00	0	64.6	64.6	64.6	
9-10 PM	819	0.0	OFF	819	0	0.00	0	64.8	64.8	64.8	
10-11 PM	658	0.0	OFF	658	0	0.00	0	65.1	65.1	65.1	
11PM-MID	523	0.0	OFF	523	0	0.00	0	65.4	65.4	65.4	

"OFF" INDICATES NO ROAD WORK (ALL LANES OPEN TO TRAFFIC)

+ INDICATES QUEUEING EXCEEDS USER-SPECIFIED MAXIMUM LIMIT

----- SITE BREAKDOWN DELAYS -----	
BREAKDOWN DURATION (MINS)	0
RANGE OF QUEUE DELAY - MIN (VEH-H) MAX	0.0
AV BREAKDOWNS PER DAY	0.00
AV QUEUE DELAY/DAY (VEH-H)	0.0
AV TOTAL DELAY/DAY (VEH-H)	0.0

----- SITE ACCIDENT DELAYS -----	
BREAKDOWN DURATION (MINS)	0
RANGE OF QUEUE DELAY - MIN (VEH-H) MAX	0
AV BREAKDOWNS PER DAY	0
AV QUEUE DELAY/DAY (VEH-H)	0
AV TOTAL DELAY/DAY (VEH-H)	0

AVERAGE ACCIDENT NUMBERS (PIA/DAY)	
MAIN ROUTE WITHOUT WORKS	0.0070
MAIN ROUTE WITH WORKS	0.0060
'DIVERSION'	0.0002
PIA: Personal Injury Accidents	
IMPACTS ON ROAD USERS	
ROAD USER COSTS PER DAY	\$38,930
CONGESTED HOURS PER DAY*	4

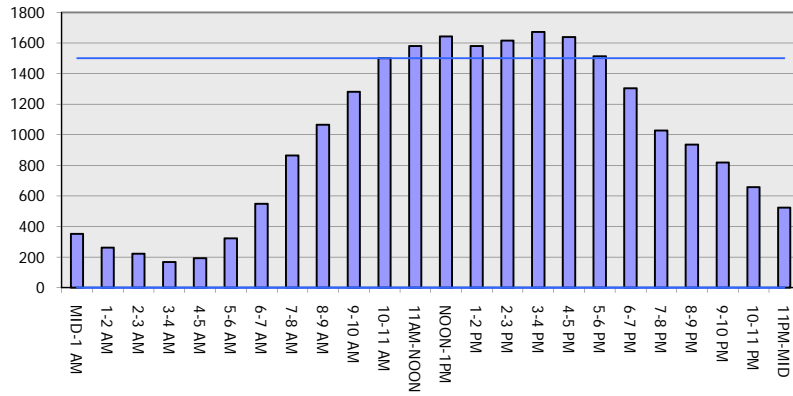
*Delays Exceeding User-Specified Maximum

**USH 41: CTH G TO CTH F (BROWN COUNTY)
OFF-PEAK DAY CLOSURE
NO DIVERSION ROUTE (MAX QUEUE METHOD)**

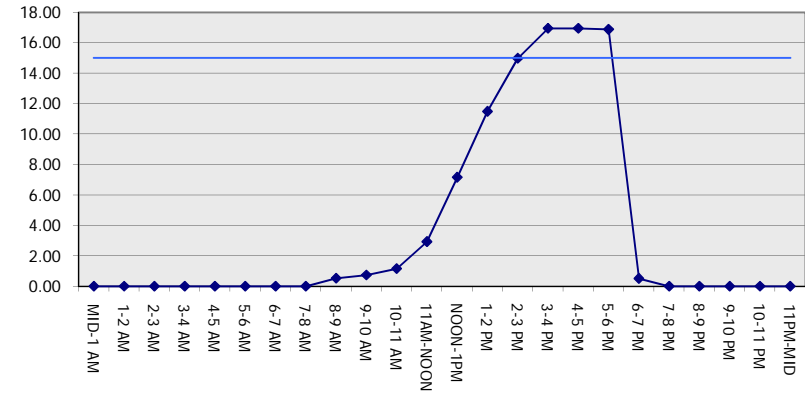
MAY
Analyzed for 2009
Construction Season

GRAPHICAL REPRESENTATION OF TRAFFIC MODEL INPUT AND OUTPUT
SATURDAY SOUTHBOUND DIRECTION

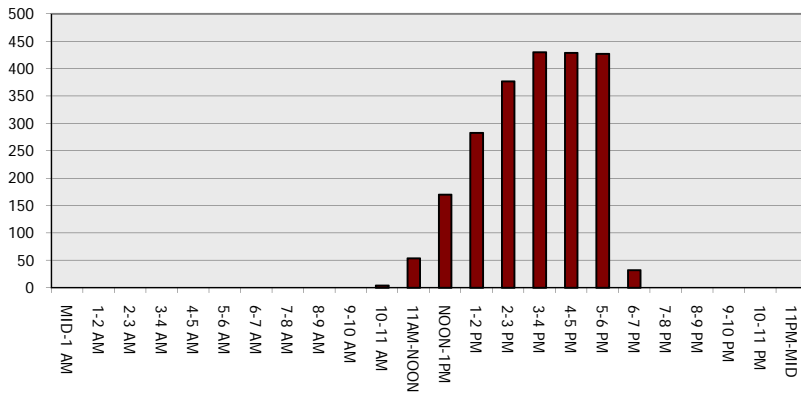
Main Route - Traffic Demand (Vehicles Per Hour)



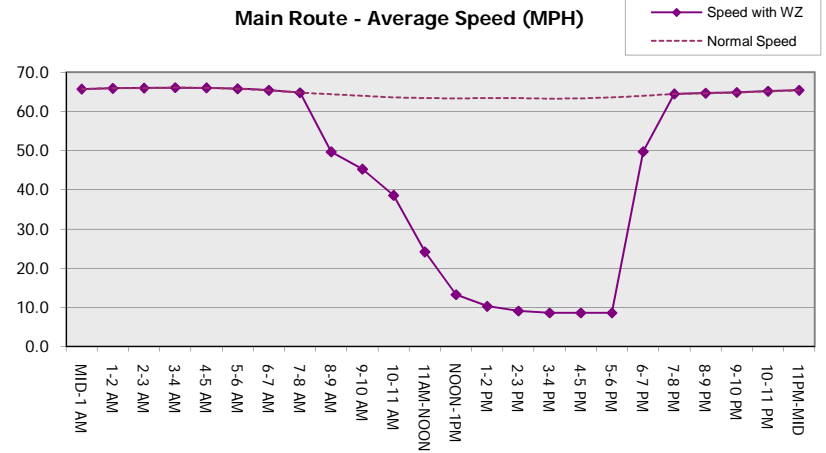
Main Route Average Delay Per Vehicle (Minutes)



Main Route - Average Queue Length (Vehicles)



Main Route - Average Speed (MPH)



USH 41: CTH G TO CTH F (BROWN COUNTY) OFF-PEAK DAY CLOSURE NO DIVERSION ROUTE (MAX QUEUE METHOD)	MAY
	Analyzed for 2009 Construction Season

SUMMARY OF TRAFFIC MODEL OUTPUT

SATURDAY NORTHBOUND DIRECTION

TIME OF DAY	FLOWS AND CAPACITY IN VEH/HR							AVERAGE SPEEDS IN MPH		
	MAIN ROUTE		SITE CAPA CITY	FLOW		AV.DEL PER VEH (MINS)	AVERAGE QUEUE (VEH)	MAIN ROUTE		SITE
	DEMAND FLOW	PCT HEAVY		MAIN ROUTE	'DIVER TED'			WITHOUT WORK ZONE	WITH WORK ZONE	
MID-1 AM	290	0.0	OFF	290	0	0.00	0	65.8	65.8	65.8
1-2 AM	182	0.0	OFF	182	0	0.00	0	66.1	66.1	66.1
2-3 AM	168	0.0	OFF	168	0	0.00	0	66.1	66.1	66.1
3-4 AM	128	0.0	OFF	128	0	0.00	0	66.1	66.1	66.1
4-5 AM	156	0.0	OFF	156	0	0.00	0	66.1	66.1	66.1
5-6 AM	287	0.0	OFF	287	0	0.00	0	65.8	65.8	65.8
6-7 AM	514	0.0	OFF	514	0	0.00	0	65.5	65.5	65.5
7-8 AM	915	0.0	OFF	915	0	0.00	0	64.7	64.7	64.7
8-9 AM	1345	0.0	1499	1345	0	0.82	0	63.9	43.8	34.4
9-10 AM	1498	0.0	1499	1498	0	1.15	4	63.6	38.8	31.2
10-11 AM	1649	0.0	1500	1649	0	3.79	84	63.3	20.4	30.8
11AM-NOON	1761	0.0	1500	1761	0	11.56+	293	63.1	10.3	30.8
NOON-1PM	1781	0.0	1499	1500	280	16.96+	430	63.1	8.6	30.8
1-2 PM	1666	0.0	1500	1500	165	16.95+	430	63.3	8.6	30.8
2-3 PM	1638	0.0	1500	1500	138	16.95+	429	63.3	8.6	30.8
3-4 PM	1668	0.0	1500	1500	167	16.95+	430	63.3	8.6	30.8
4-5 PM	1584	0.0	1500	1500	84	16.95+	429	63.4	8.6	30.8
5-6 PM	1518	0.0	1500	1493	25	16.88+	427	63.5	8.6	30.8
6-7 PM	1322	0.0	OFF	1322	0	0.52	33	63.9	49.5	49.5
7-8 PM	1029	0.0	OFF	1029	0	0.00	0	64.5	64.5	64.5
8-9 PM	915	0.0	OFF	915	0	0.00	0	64.7	64.7	64.7
9-10 PM	793	0.0	OFF	793	0	0.00	0	64.9	64.9	64.9
10-11 PM	694	0.0	OFF	694	0	0.00	0	65.1	65.1	65.1
11PM-MID	435	0.0	OFF	435	0	0.00	0	65.6	65.6	65.6

"OFF" INDICATES NO ROAD WORK (ALL LANES OPEN TO TRAFFIC)

+ INDICATES QUEUEING EXCEEDS USER-SPECIFIED MAXIMUM LIMIT

----- SITE BREAKDOWN DELAYS -----	
BREAKDOWN DURATION (MINS)	0
RANGE OF QUEUE DELAY - MIN (VEH-H) MAX	0.0
AV BREAKDOWNS PER DAY	0.00
AV QUEUE DELAY/DAY (VEH-H)	0.0
AV TOTAL DELAY/DAY (VEH-H)	0.0

----- SITE ACCIDENT DELAYS -----	
BREAKDOWN DURATION (MINS)	0
RANGE OF QUEUE DELAY - MIN (VEH-H) MAX	0
AV BREAKDOWNS PER DAY	0
AV QUEUE DELAY/DAY (VEH-H)	0
AV TOTAL DELAY/DAY (VEH-H)	0

AVERAGE ACCIDENT NUMBERS (PIA/DAY)	
MAIN ROUTE WITHOUT WORKS	0.0072
MAIN ROUTE WITH WORKS	0.0060
'DIVERSION'	0.0006

PIA: Personal Injury Accidents

ECONOMIC IMPACT ON ROAD USERS	
ROAD USER COSTS PER DAY	\$53,150
CONGESTED HOURS PER DAY*	7

*Delays Exceeding User-Specified Maximum

**USH 41: CTH G TO CTH F (BROWN COUNTY)
OFF-PEAK DAY CLOSURE
NO DIVERSION ROUTE (MAX QUEUE METHOD)**

MAY
Analyzed for 2009
Construction Season

GRAPHICAL REPRESENTATION OF TRAFFIC MODEL INPUT AND OUTPUT
SATURDAY NORTHBOUND DIRECTION

