

USH 41: STH 55 TO CTH F (BROWN COUNTY) OFF-PEAK DAY CLOSURE NO DIVERSION ROUTE (MAX QUEUE METHOD)	OCTOBER
	Analyzed for 2009 Construction Season

SUMMARY OF TRAFFIC MODEL OUTPUT

MON-THUR SOUTHBOUND DIRECTION

TIME OF DAY	FLOWS AND CAPACITY IN VEH/HR						AVERAGE SPEEDS IN MPH				
	MAIN ROUTE		SITE CAPA CITY	FLOW		AV.DEL PER VEH (MINS)	AVERAGE QUEUE (VEH)	MAIN ROUTE		SITE	
	DEMAND FLOW	PCT HEAVY		MAIN ROUTE	'DIVER TED'			WITHOUT WORK ZONE	WITH WORK ZONE		
MID-1 AM	276	0.0	OFF	276	0	0.00	0	65.9	65.9	65.9	
1-2 AM	118	0.0	OFF	118	0	0.00	0	66.1	66.1	66.1	
2-3 AM	102	0.0	OFF	102	0	0.00	0	66.2	66.2	66.2	
3-4 AM	133	0.0	OFF	133	0	0.00	0	66.1	66.1	66.1	
4-5 AM	313	0.0	OFF	313	0	0.00	0	65.8	65.8	65.8	
5-6 AM	910	0.0	OFF	910	0	0.00	0	64.7	64.7	64.7	
6-7 AM	1691	0.0	OFF	1691	0	0.00	0	63.2	63.2	63.2	
7-8 AM	1911	0.0	OFF	1911	0	0.00	0	62.8	62.8	62.8	
8-9 AM	1261	0.0	OFF	1261	0	0.00	0	64.0	64.0	64.0	
9-10 AM	1186	0.0	OFF	1186	0	0.00	0	64.1	64.1	64.1	
10-11 AM	1180	0.0	1500	1180	0	0.61	0	64.2	61.0	39.1	
11AM-NOON	1226	0.0	1500	1226	0	0.67	0	64.1	60.6	37.6	
NOON-1PM	1298	0.0	1500	1298	0	0.76	0	64.0	60.1	35.6	
1-2 PM	1372	0.0	1499	1372	0	0.86	0	63.8	59.4	33.7	
2-3 PM	1568	0.0	1499	1568	0	1.64	18	63.5	55.6	30.9	
3-4 PM	1991	0.0	OFF	1991	0	0.05	1	62.7	62.4	62.4	
4-5 PM	2432	0.0	OFF	2432	0	0.00	0	61.6	61.6	61.6	
5-6 PM	1874	0.0	OFF	1874	0	0.00	0	62.9	62.9	62.9	
6-7 PM	1002	0.0	OFF	1002	0	0.00	0	64.5	64.5	64.5	
7-8 PM	716	0.0	OFF	716	0	0.00	0	65.1	65.1	65.1	
8-9 PM	628	0.0	OFF	628	0	0.00	0	65.2	65.2	65.2	
9-10 PM	593	0.0	OFF	593	0	0.00	0	65.3	65.3	65.3	
10-11 PM	347	0.0	OFF	347	0	0.00	0	65.8	65.8	65.8	
11PM-MID	219	0.0	OFF	219	0	0.00	0	66.0	66.0	66.0	

"OFF" INDICATES NO ROAD WORK (ALL LANES OPEN TO TRAFFIC)

----- SITE BREAKDOWN DELAYS -----	
BREAKDOWN DURATION (MINS)	0
RANGE OF QUEUE DELAY - MIN (VEH-H) MAX	0.0
AV BREAKDOWNS PER DAY	0.00
AV QUEUE DELAY/DAY (VEH-H)	0.0
AV TOTAL DELAY/DAY (VEH-H)	0.0

----- SITE ACCIDENT DELAYS -----	
BREAKDOWN DURATION (MINS)	0
RANGE OF QUEUE DELAY - MIN (VEH-H) MAX	0
AV BREAKDOWNS PER DAY	0
AV QUEUE DELAY/DAY (VEH-H)	0
AV TOTAL DELAY/DAY (VEH-H)	0

AVERAGE ACCIDENT NUMBERS (PIA/DAY)	
MAIN ROUTE WITHOUT WORKS	0.0481
MAIN ROUTE WITH WORKS	0.0476
'DIVERSION'	0.0000
<small>PIA: Personal Injury Accidents</small>	
IMPACTS ON ROAD USERS	
ROAD USER COSTS PER DAY	\$1,221
CONGESTED HOURS PER DAY*	0

*Delays Exceeding User-Specified Maximum

**USH 41: STH 55 TO CTH F (BROWN COUNTY)
OFF-PEAK DAY CLOSURE
NO DIVERSION ROUTE (MAX QUEUE METHOD)**

OCTOBER

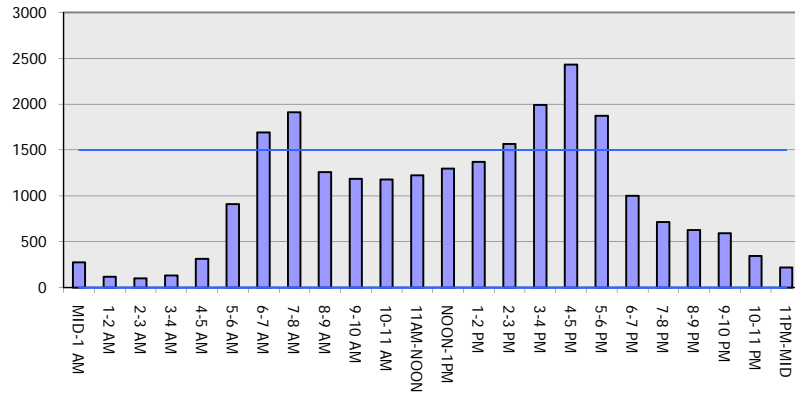
Analyzed for 2009
Construction Season

GRAPHICAL REPRESENTATION OF TRAFFIC MODEL INPUT AND OUTPUT

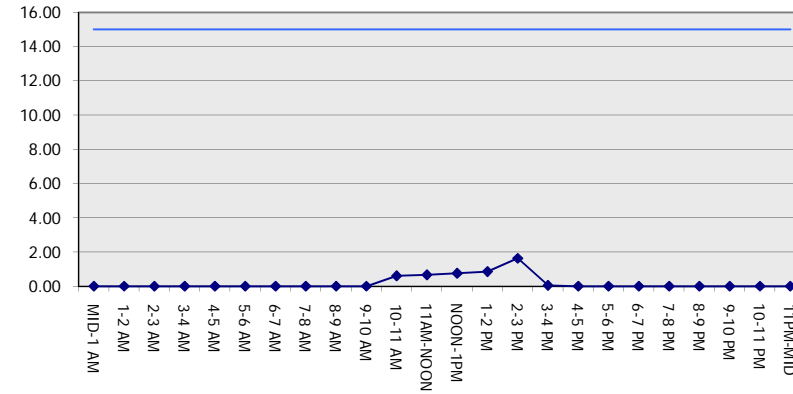
MON-THUR

SOUTHBOUND DIRECTION

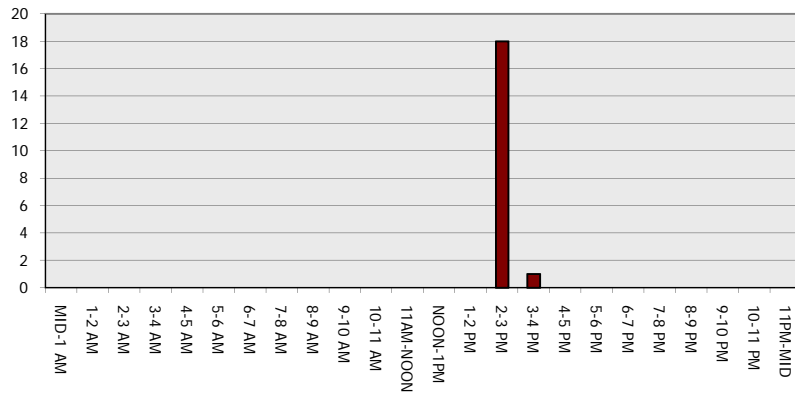
Main Route - Traffic Demand (Vehicles Per Hour)



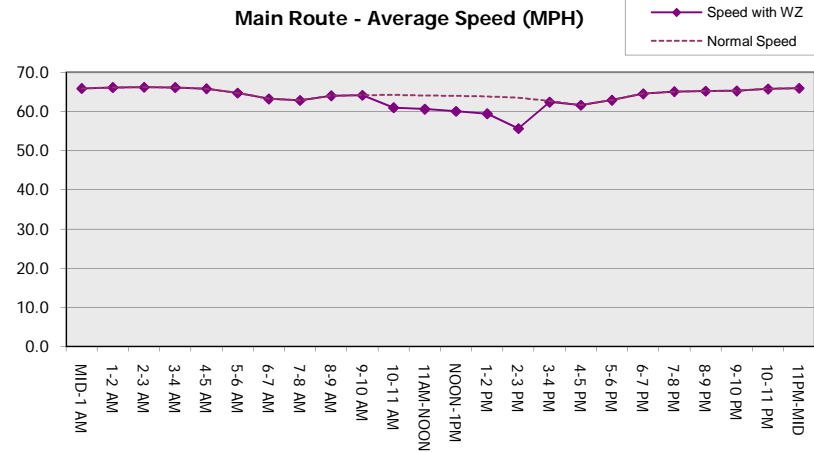
Main Route Average Delay Per Vehicle (Minutes)



Main Route - Average Queue Length (Vehicles)



Main Route - Average Speed (MPH)



USH 41: STH 55 TO CTH F (BROWN COUNTY) OFF-PEAK DAY CLOSURE NO DIVERSION ROUTE (MAX QUEUE METHOD)	OCTOBER
	Analyzed for 2009 Construction Season

SUMMARY OF TRAFFIC MODEL OUTPUT

MON-THUR NORTHBOUND DIRECTION

TIME OF DAY	FLOWS AND CAPACITY IN VEH/HR						AVERAGE SPEEDS IN MPH			
	MAIN ROUTE		SITE CAPA CITY	FLOW		AV.DEL PER VEH (MINS)	AVERAGE QUEUE (VEH)	MAIN ROUTE		SITE
	DEMAND FLOW	PCT HEAVY		MAIN ROUTE	'DIVER TED'			WITHOUT WORK ZONE	WITH WORK ZONE	
MID-1 AM	112	0.0	OFF	112	0	0.00	0	66.2	66.2	66.2
1-2 AM	94	0.0	OFF	94	0	0.00	0	66.2	66.2	66.2
2-3 AM	96	0.0	OFF	96	0	0.00	0	66.2	66.2	66.2
3-4 AM	135	0.0	OFF	135	0	0.00	0	66.1	66.1	66.1
4-5 AM	288	0.0	OFF	288	0	0.00	0	65.8	65.8	65.8
5-6 AM	786	0.0	OFF	786	0	0.00	0	64.9	64.9	64.9
6-7 AM	1822	0.0	OFF	1822	0	0.00	0	63.0	63.0	63.0
7-8 AM	2391	0.0	OFF	2391	0	0.00	0	61.9	61.9	61.9
8-9 AM	1538	0.0	OFF	1538	0	0.00	0	63.5	63.5	63.5
9-10 AM	1268	0.0	OFF	1268	0	0.00	0	64.0	64.0	64.0
10-11 AM	1186	0.0	1500	1186	0	0.62	0	64.1	60.9	38.9
11AM-NOON	1208	0.0	1500	1208	0	0.65	0	64.1	60.7	38.2
NOON-1PM	1219	0.0	1500	1219	0	0.66	0	64.1	60.7	37.9
1-2 PM	1278	0.0	1500	1278	0	0.74	0	64.0	60.2	36.1
2-3 PM	1431	0.0	1499	1431	0	0.93	0	63.7	59.0	32.3
3-4 PM	1757	0.0	OFF	1757	0	0.00	0	63.1	63.1	63.1
4-5 PM	2111	0.0	OFF	2111	0	0.00	0	62.5	62.5	62.5
5-6 PM	1804	0.0	OFF	1804	0	0.00	0	63.0	63.0	63.0
6-7 PM	1030	0.0	OFF	1030	0	0.00	0	64.5	64.5	64.5
7-8 PM	706	0.0	OFF	706	0	0.00	0	65.1	65.1	65.1
8-9 PM	597	0.0	OFF	597	0	0.00	0	65.3	65.3	65.3
9-10 PM	491	0.0	OFF	491	0	0.00	0	65.5	65.5	65.5
10-11 PM	313	0.0	OFF	313	0	0.00	0	65.8	65.8	65.8
11PM-MID	156	0.0	OFF	156	0	0.00	0	66.1	66.1	66.1

"OFF" INDICATES NO ROAD WORK (ALL LANES OPEN TO TRAFFIC)

----- SITE BREAKDOWN DELAYS -----	
BREAKDOWN DURATION (MINS)	0
RANGE OF QUEUE DELAY - MIN (VEH-H) MAX	0.0
AV BREAKDOWNS PER DAY	0.00
AV QUEUE DELAY/DAY (VEH-H)	0.0
AV TOTAL DELAY/DAY (VEH-H)	0.0

----- SITE ACCIDENT DELAYS -----	
BREAKDOWN DURATION (MINS)	0
RANGE OF QUEUE DELAY - MIN (VEH-H) MAX	0
AV BREAKDOWNS PER DAY	0
AV QUEUE DELAY/DAY (VEH-H)	0
AV TOTAL DELAY/DAY (VEH-H)	0

AVERAGE ACCIDENT NUMBERS (PIA/DAY)	
MAIN ROUTE WITHOUT WORKS	0.0470
MAIN ROUTE WITH WORKS	0.0466
'DIVERSION'	0.0000

PIA: Personal Injury Accidents

ECONOMIC IMPACT ON ROAD USERS	
ROAD USER COSTS PER DAY	\$881
CONGESTED HOURS PER DAY*	0

*Delays Exceeding User-Specified Maximum

**USH 41: STH 55 TO CTH F (BROWN COUNTY)
OFF-PEAK DAY CLOSURE
NO DIVERSION ROUTE (MAX QUEUE METHOD)**

OCTOBER

Analyzed for 2009
Construction Season

GRAPHICAL REPRESENTATION OF TRAFFIC MODEL INPUT AND OUTPUT
MON-THUR NORTHBOUND DIRECTION

