

USH 41: STH 55 TO CTH F (BROWN COUNTY) OFF-PEAK DAY CLOSURE NO DIVERSION ROUTE (MAX QUEUE METHOD)	AUGUST
	Analyzed for 2009 Construction Season

SUMMARY OF TRAFFIC MODEL OUTPUT

MON-THUR SOUTHBOUND DIRECTION

TIME OF DAY	FLOWS AND CAPACITY IN VEH/HR						AVERAGE SPEEDS IN MPH				
	MAIN ROUTE		SITE CAPA CITY	FLOW		AV.DEL PER VEH (MINS)	AVERAGE QUEUE (VEH)	MAIN ROUTE		SITE	
	DEMAND FLOW	PCT HEAVY		MAIN ROUTE	'DIVER TED'			WITHOUT WORK ZONE	WITH WORK ZONE		
MID-1 AM	165	0.0	OFF	165	0	0.00	0	66.1	66.1	66.1	
1-2 AM	119	0.0	OFF	119	0	0.00	0	66.1	66.1	66.1	
2-3 AM	110	0.0	OFF	110	0	0.00	0	66.2	66.2	66.2	
3-4 AM	140	0.0	OFF	140	0	0.00	0	66.1	66.1	66.1	
4-5 AM	322	0.0	OFF	322	0	0.00	0	65.8	65.8	65.8	
5-6 AM	914	0.0	OFF	914	0	0.00	0	64.7	64.7	64.7	
6-7 AM	1651	0.0	OFF	1651	0	0.00	0	63.3	63.3	63.3	
7-8 AM	1833	0.0	OFF	1833	0	0.00	0	63.0	63.0	63.0	
8-9 AM	1298	0.0	OFF	1298	0	0.00	0	64.0	64.0	64.0	
9-10 AM	1252	0.0	OFF	1252	0	0.00	0	64.0	64.0	64.0	
10-11 AM	1298	0.0	1500	1298	0	0.76	0	64.0	60.1	35.6	
11AM-NOON	1346	0.0	1500	1346	0	0.83	0	63.9	59.6	34.3	
NOON-1PM	1425	0.0	1499	1425	0	0.93	0	63.7	59.1	32.4	
1-2 PM	1507	0.0	1499	1507	0	1.17	4	63.6	57.8	31.0	
2-3 PM	1665	0.0	1500	1665	0	3.96	84	63.3	47.3	30.8	
3-4 PM	2042	0.0	OFF	2042	0	0.20	8	62.6	61.5	61.5	
4-5 PM	2474	0.0	OFF	2474	0	0.00	0	61.2	61.2	61.2	
5-6 PM	2017	0.0	OFF	2017	0	0.00	0	62.7	62.7	62.7	
6-7 PM	1112	0.0	OFF	1112	0	0.00	0	64.3	64.3	64.3	
7-8 PM	779	0.0	OFF	779	0	0.00	0	65.0	65.0	65.0	
8-9 PM	721	0.0	OFF	721	0	0.00	0	65.0	65.0	65.0	
9-10 PM	622	0.0	OFF	622	0	0.00	0	65.2	65.2	65.2	
10-11 PM	591	0.0	OFF	591	0	0.00	0	65.3	65.3	65.3	
11PM-MID	360	0.0	OFF	360	0	0.00	0	65.7	65.7	65.7	

"OFF" INDICATES NO ROAD WORK (ALL LANES OPEN TO TRAFFIC)

----- SITE BREAKDOWN DELAYS -----	
BREAKDOWN DURATION (MINS)	0
RANGE OF QUEUE DELAY - MIN (VEH-H) MAX	0.0
AV BREAKDOWNS PER DAY	0.00
AV QUEUE DELAY/DAY (VEH-H)	0.0
AV TOTAL DELAY/DAY (VEH-H)	0.0

----- SITE ACCIDENT DELAYS -----	
BREAKDOWN DURATION (MINS)	0
RANGE OF QUEUE DELAY - MIN (VEH-H) MAX	0
AV BREAKDOWNS PER DAY	0
AV QUEUE DELAY/DAY (VEH-H)	0
AV TOTAL DELAY/DAY (VEH-H)	0

AVERAGE ACCIDENT NUMBERS (PIA/DAY)	
MAIN ROUTE WITHOUT WORKS	0.0508
MAIN ROUTE WITH WORKS	0.0504
'DIVERSION'	0.0000
<small>PIA: Personal Injury Accidents</small>	
IMPACTS ON ROAD USERS	
ROAD USER COSTS PER DAY	\$1,988
CONGESTED HOURS PER DAY*	0

*Delays Exceeding User-Specified Maximum

**USH 41: STH 55 TO CTH F (BROWN COUNTY)
OFF-PEAK DAY CLOSURE
NO DIVERSION ROUTE (MAX QUEUE METHOD)**

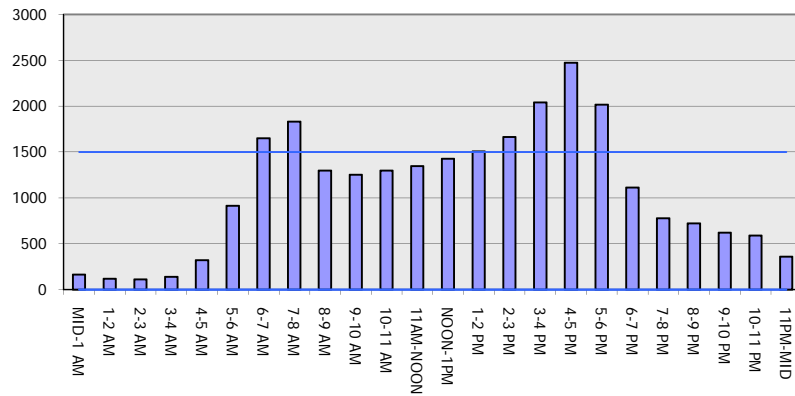
AUGUST

Analyzed for 2009
Construction Season

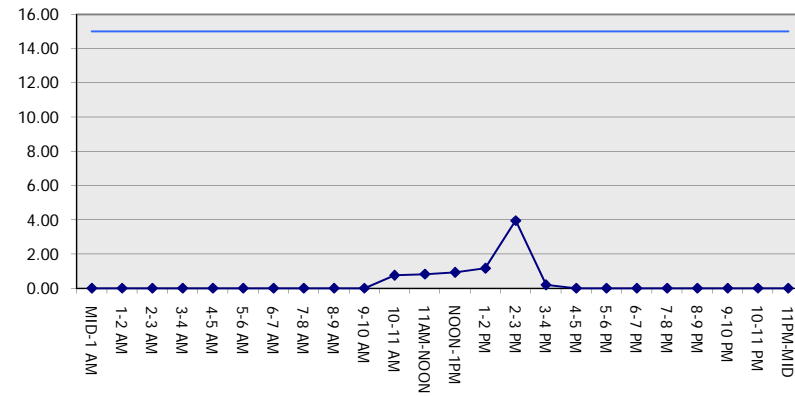
GRAPHICAL REPRESENTATION OF TRAFFIC MODEL INPUT AND OUTPUT

MON-THUR SOUTHBOUND DIRECTION

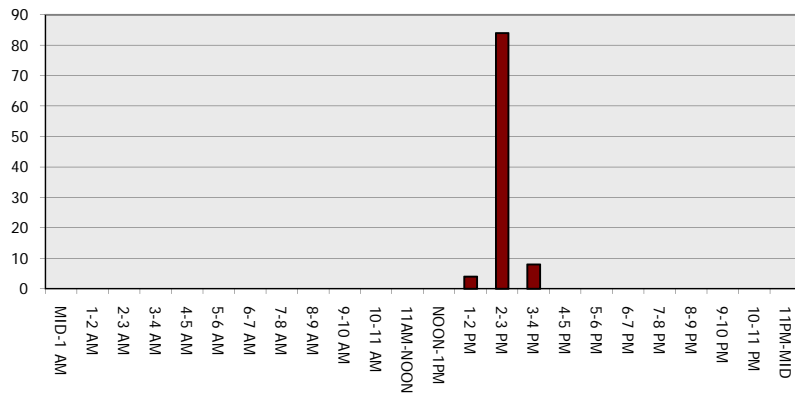
Main Route - Traffic Demand (Vehicles Per Hour)



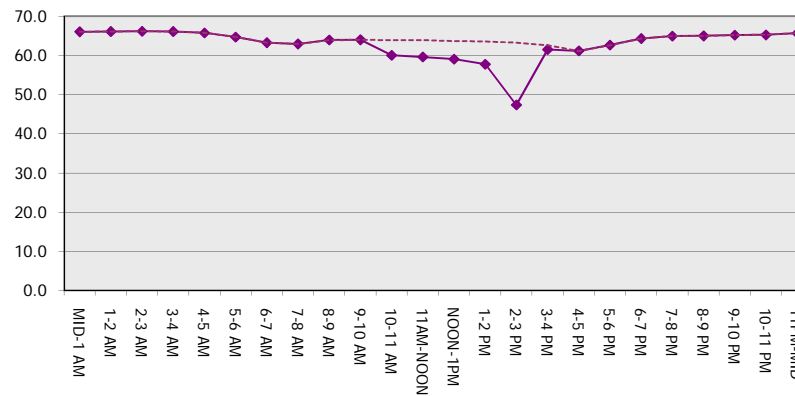
Main Route Average Delay Per Vehicle (Minutes)



Main Route - Average Queue Length (Vehicles)



Main Route - Average Speed (MPH)



USH 41: STH 55 TO CTH F (BROWN COUNTY) OFF-PEAK DAY CLOSURE NO DIVERSION ROUTE (MAX QUEUE METHOD)	AUGUST
	Analyzed for 2009 Construction Season

SUMMARY OF TRAFFIC MODEL OUTPUT

MON-THUR NORTHBOUND DIRECTION

TIME OF DAY	FLOWS AND CAPACITY IN VEH/HR							AVERAGE SPEEDS IN MPH		
	MAIN ROUTE		SITE CAPA CITY	FLOW		AV.DEL PER VEH (MINS)	AVERAGE QUEUE (VEH)	MAIN ROUTE		SITE
	DEMAND FLOW	PCT HEAVY		MAIN ROUTE	'DIVER TED'			WITHOUT WORK ZONE	WITH WORK ZONE	
MID-1 AM	136	0.0	OFF	136	0	0.00	0	66.1	66.1	66.1
1-2 AM	108	0.0	OFF	108	0	0.00	0	66.2	66.2	66.2
2-3 AM	108	0.0	OFF	108	0	0.00	0	66.2	66.2	66.2
3-4 AM	131	0.0	OFF	131	0	0.00	0	66.1	66.1	66.1
4-5 AM	289	0.0	OFF	289	0	0.00	0	65.8	65.8	65.8
5-6 AM	803	0.0	OFF	803	0	0.00	0	64.9	64.9	64.9
6-7 AM	1782	0.0	OFF	1782	0	0.00	0	63.1	63.1	63.1
7-8 AM	2223	0.0	OFF	2223	0	0.00	0	62.2	62.2	62.2
8-9 AM	1559	0.0	OFF	1559	0	0.00	0	63.5	63.5	63.5
9-10 AM	1370	0.0	OFF	1370	0	0.00	0	63.8	63.8	63.8
10-11 AM	1324	0.0	1500	1324	0	0.80	0	63.9	59.8	34.8
11AM-NOON	1368	0.0	1500	1368	0	0.85	0	63.8	59.5	33.7
NOON-1PM	1386	0.0	1500	1386	0	0.88	0	63.8	59.4	33.3
1-2 PM	1414	0.0	1499	1414	0	0.91	0	63.8	59.1	32.7
2-3 PM	1594	0.0	1499	1594	0	2.15	32	63.4	53.6	30.8
3-4 PM	1888	0.0	OFF	1888	0	0.06	2	62.8	62.5	62.5
4-5 PM	2263	0.0	OFF	2263	0	0.00	0	62.2	62.2	62.2
5-6 PM	1938	0.0	OFF	1938	0	0.00	0	62.8	62.8	62.8
6-7 PM	1149	0.0	OFF	1149	0	0.00	0	64.3	64.3	64.3
7-8 PM	818	0.0	OFF	818	0	0.00	0	64.8	64.8	64.8
8-9 PM	713	0.0	OFF	713	0	0.00	0	65.1	65.1	65.1
9-10 PM	584	0.0	OFF	584	0	0.00	0	65.3	65.3	65.3
10-11 PM	391	0.0	OFF	391	0	0.00	0	65.6	65.6	65.6
11PM-MID	207	0.0	OFF	207	0	0.00	0	66.0	66.0	66.0

"OFF" INDICATES NO ROAD WORK (ALL LANES OPEN TO TRAFFIC)

----- SITE BREAKDOWN DELAYS -----	
BREAKDOWN DURATION (MINS)	0
RANGE OF QUEUE DELAY - MIN (VEH-H) MAX	0.0
AV BREAKDOWNS PER DAY	0.00
AV QUEUE DELAY/DAY (VEH-H)	0.0
AV TOTAL DELAY/DAY (VEH-H)	0.0

----- SITE ACCIDENT DELAYS -----	
BREAKDOWN DURATION (MINS)	0
RANGE OF QUEUE DELAY - MIN (VEH-H) MAX	0
AV BREAKDOWNS PER DAY	0
AV QUEUE DELAY/DAY (VEH-H)	0
AV TOTAL DELAY/DAY (VEH-H)	0

AVERAGE ACCIDENT NUMBERS (PIA/DAY)	
MAIN ROUTE WITHOUT WORKS	0.0504
MAIN ROUTE WITH WORKS	0.0500
'DIVERSION'	0.0000

PIA: Personal Injury Accidents

ECONOMIC IMPACT ON ROAD USERS	
ROAD USER COSTS PER DAY	\$1,348
CONGESTED HOURS PER DAY*	0

*Delays Exceeding User-Specified Maximum

**USH 41: STH 55 TO CTH F (BROWN COUNTY)
OFF-PEAK DAY CLOSURE
NO DIVERSION ROUTE (MAX QUEUE METHOD)**

AUGUST
Analyzed for 2009
Construction Season

GRAPHICAL REPRESENTATION OF TRAFFIC MODEL INPUT AND OUTPUT
MON-THUR NORTHBOUND DIRECTION

