

USH 41: STH 125 TO USH 10 (WINNEBAGO AND OUTAGAMIE COUNTIES) CONTINUOUS (24 HOUR) 2 LANE CLOSURE NO DIVERSION ROUTE (MAX QUEUE METHOD)	OCTOBER
	Analyzed for 2009 Construction Season

SUMMARY OF TRAFFIC MODEL OUTPUT

SUNDAY SOUTHBOUND DIRECTION

TIME OF DAY	FLOWS AND CAPACITY IN VEH/HR						AVERAGE SPEEDS IN MPH				
	MAIN ROUTE		SITE CAPA CITY	FLOW		AV.DEL PER VEH (MINS)	AVERAGE QUEUE (VEH)	MAIN ROUTE		SITE	
	DEMAND FLOW	PCT HEAVY		MAIN ROUTE	'DIVER TED'			WITHOUT WORK ZONE	WITH WORK ZONE		
MID-1 AM	452	0.0	1500	452	0	0.53	0	70.2	58.5	43.7	
1-2 AM	293	0.0	1500	293	0	0.51	0	70.2	58.9	44.3	
2-3 AM	289	0.0	1500	289	0	0.51	0	70.2	59.1	44.7	
3-4 AM	187	0.0	1500	187	0	0.50	0	70.2	59.2	44.8	
4-5 AM	164	0.0	1500	164	0	0.49	0	70.2	59.1	44.6	
5-6 AM	218	0.0	1500	218	0	0.50	0	70.2	58.7	44.1	
6-7 AM	345	0.0	1500	345	0	0.51	0	70.2	58.6	43.7	
7-8 AM	443	0.0	1500	443	0	0.53	0	69.8	57.6	42.5	
8-9 AM	764	0.0	1500	764	0	0.56	0	69.3	55.3	39.1	
9-10 AM	1150	0.0	1499	1150	0	0.68	0	68.7	39.9	30.8	
10-11 AM	1615	0.0	1499	1615	0	1.95	28	68.1	12.3	30.8	
11AM-NOON	2083	0.0	1500	1739	344	12.38+	317	67.7	9.7	30.8	
NOON-1PM	2455	0.0	1500	1500	955	16.33+	400	67.5	9.7	30.8	
1-2 PM	2595	0.0	1500	1500	1095	16.32+	400	67.3	9.7	30.8	
2-3 PM	2776	0.0	1499	1500	1276	16.31+	400	67.0	9.7	30.8	
3-4 PM	3004	0.0	1499	1500	1504	16.30+	400	67.3	9.7	30.8	
4-5 PM	3062	0.0	1500	1500	1562	16.30+	400	67.8	9.7	30.8	
5-6 PM	2821	0.0	1500	1500	1321	16.31+	400	67.8	9.7	30.8	
6-7 PM	2331	0.0	1500	1500	831	16.34+	400	68.7	10.1	30.8	
7-8 PM	1613	0.0	1500	1506	107	15.69+	382	69.4	22.9	35.8	
8-9 PM	1090	0.0	1499	1090	0	5.45	183	69.7	57.6	42.4	
9-10 PM	786	0.0	1500	786	0	0.56	0	70.0	58.2	43.3	
10-11 PM	556	0.0	1500	556	0	0.54	0	69.9	57.9	42.8	
11PM-MID	685	0.0	1500	685	0	0.55	0				

+ INDICATES QUEUEING EXCEEDS USER-SPECIFIED MAXIMUM LIMIT

----- SITE BREAKDOWN DELAYS -----	
BREAKDOWN DURATION (MINS)	0
RANGE OF QUEUE DELAY - MIN (VEH-H) MAX	0.0
AV BREAKDOWNS PER DAY	0.00
AV QUEUE DELAY/DAY (VEH-H)	0.0
AV TOTAL DELAY/DAY (VEH-H)	0.0

----- SITE ACCIDENT DELAYS -----	
BREAKDOWN DURATION (MINS)	0
RANGE OF QUEUE DELAY - MIN (VEH-H) MAX	0
AV BREAKDOWNS PER DAY	0
AV QUEUE DELAY/DAY (VEH-H)	0
AV TOTAL DELAY/DAY (VEH-H)	0

AVERAGE ACCIDENT NUMBERS (PIA/DAY)	
MAIN ROUTE WITHOUT WORKS	0.0157
MAIN ROUTE WITH WORKS	0.0097
'DIVERSION'	0.0103
PIA: Personal Injury Accidents	
IMPACTS ON ROAD USERS	
ROAD USER COSTS PER DAY	\$105,680
CONGESTED HOURS PER DAY*	9

*Delays Exceeding User-Specified Maximum

**USH 41: STH 125 TO USH 10 (WINNEBAGO AND OUTAGAMIE COUNTIES)
 CONTINUOUS (24 HOUR) 2 LANE CLOSURE
 NO DIVERSION ROUTE (MAX QUEUE METHOD)**

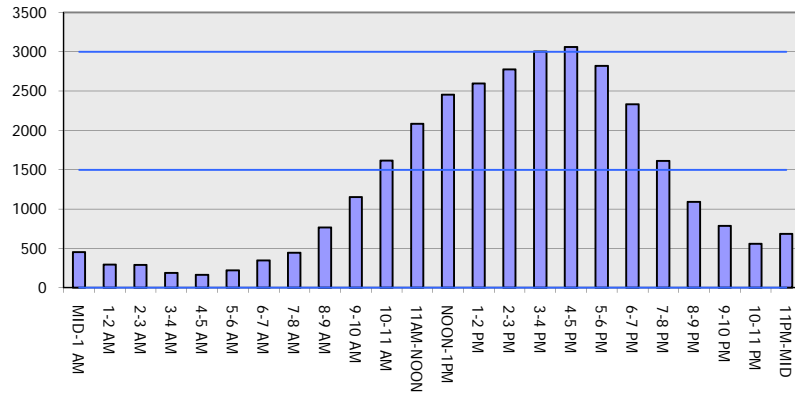
OCTOBER

Analyzed for 2009
 Construction Season

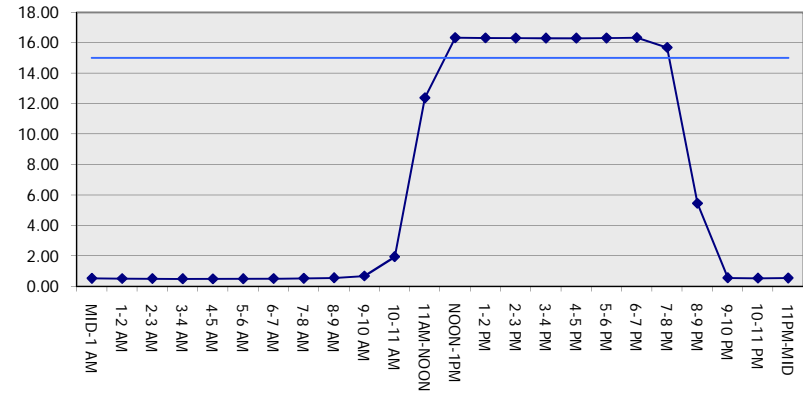
GRAPHICAL REPRESENTATION OF TRAFFIC MODEL INPUT AND OUTPUT

SUNDAY SOUTHBOUND DIRECTION

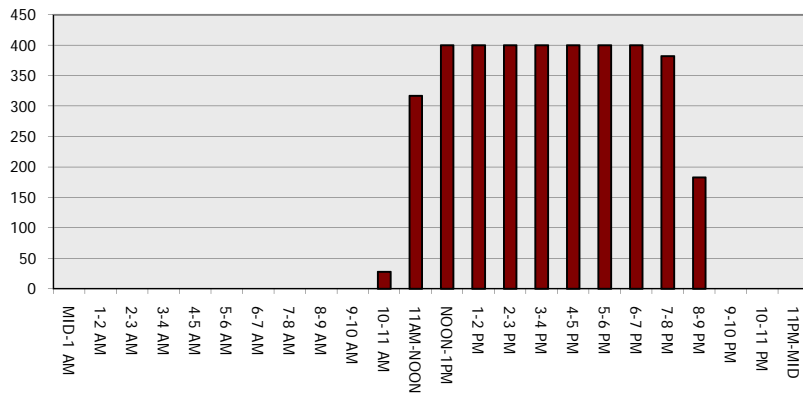
Main Route - Traffic Demand (Vehicles Per Hour)



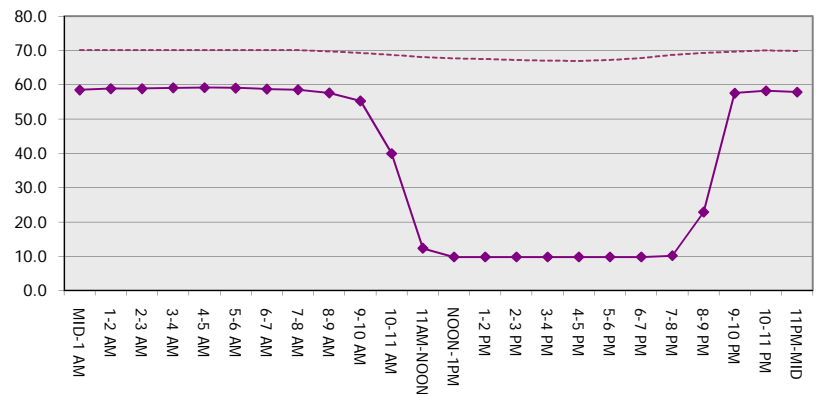
Main Route Average Delay Per Vehicle (Minutes)



Main Route - Average Queue Length (Vehicles)



Main Route - Average Speed (MPH)



USH 41: STH 125 TO USH 10 (WINNEBAGO AND OUTAGAMIE COUNTIES) CONTINUOUS (24 HOUR) 2 LANE CLOSURE NO DIVERSION ROUTE (MAX QUEUE METHOD)	OCTOBER
	Analyzed for 2009 Construction Season

SUMMARY OF TRAFFIC MODEL OUTPUT

SUNDAY NORTHBOUND DIRECTION

TIME OF DAY	FLOWS AND CAPACITY IN VEH/HR							AVERAGE SPEEDS IN MPH		
	MAIN ROUTE		SITE CAPA CITY	FLOW		AV.DEL PER VEH (MINS)	AVERAGE QUEUE (VEH)	MAIN ROUTE		SITE
	DEMAND FLOW	PCT HEAVY		MAIN ROUTE	'DIVER TED'			WITHOUT WORK ZONE	WITH WORK ZONE	
MID-1 AM	360	0.0	1500	360	0	0.52	0	70.2	58.7	44.0
1-2 AM	247	0.0	1500	247	0	0.50	0	70.2	59.0	44.5
2-3 AM	196	0.0	1500	196	0	0.50	0	70.2	59.1	44.7
3-4 AM	132	0.0	1500	132	0	0.49	0	70.2	59.2	45.0
4-5 AM	122	0.0	1500	122	0	0.49	0	70.2	59.2	45.0
5-6 AM	222	0.0	1500	222	0	0.50	0	70.2	59.1	44.6
6-7 AM	324	0.0	1500	324	0	0.51	0	70.2	58.8	44.2
7-8 AM	551	0.0	1500	551	0	0.54	0	70.0	58.2	43.3
8-9 AM	1105	0.0	1499	1105	0	0.68	0	69.4	55.3	39.2
9-10 AM	1805	0.0	1499	1805	0	4.53	118	68.5	25.6	30.8
10-11 AM	2198	0.0	1499	1562	635	16.09+	393	68.0	9.9	30.8
11AM-NOON	2323	0.0	1500	1500	823	16.34+	400	67.9	9.7	30.8
NOON-1PM	2432	0.0	1500	1500	932	16.33+	399	67.7	9.7	30.8
1-2 PM	2286	0.0	1500	1500	786	16.34+	400	67.9	9.7	30.8
2-3 PM	2303	0.0	1500	1500	803	16.34+	400	67.9	9.7	30.8
3-4 PM	2428	0.0	1500	1500	928	16.33+	400	67.7	9.7	30.8
4-5 PM	2269	0.0	1500	1500	769	16.34+	400	67.9	9.7	30.8
5-6 PM	1854	0.0	1500	1502	351	16.35+	399	68.4	9.7	30.8
6-7 PM	1517	0.0	1500	1494	24	15.88+	387	68.9	10.0	30.8
7-8 PM	1080	0.0	1499	1080	0	5.16	178	69.4	23.7	36.0
8-9 PM	811	0.0	1500	811	0	0.57	0	69.7	57.5	42.4
9-10 PM	606	0.0	1500	606	0	0.54	0	70.0	58.1	43.1
10-11 PM	455	0.0	1500	455	0	0.53	0	70.2	58.5	43.7
11PM-MID	266	0.0	1500	266	0	0.50	0	70.2	58.9	44.4

+ INDICATES QUEUEING EXCEEDS USER-SPECIFIED MAXIMUM LIMIT

----- SITE BREAKDOWN DELAYS -----	
BREAKDOWN DURATION (MINS)	0
RANGE OF QUEUE DELAY - MIN (VEH-H) MAX	0.0
AV BREAKDOWNS PER DAY	0.00
AV QUEUE DELAY/DAY (VEH-H)	0.0
AV TOTAL DELAY/DAY (VEH-H)	0.0

----- SITE ACCIDENT DELAYS -----	
BREAKDOWN DURATION (MINS)	0
RANGE OF QUEUE DELAY - MIN (VEH-H) MAX	0
AV BREAKDOWNS PER DAY	0
AV QUEUE DELAY/DAY (VEH-H)	0
AV TOTAL DELAY/DAY (VEH-H)	0

AVERAGE ACCIDENT NUMBERS (PIA/DAY)	
MAIN ROUTE WITHOUT WORKS	0.0138
MAIN ROUTE WITH WORKS	0.0093
'DIVERSION'	0.0069

PIA: Personal Injury Accidents

ECONOMIC IMPACT ON ROAD USERS	
ROAD USER COSTS PER DAY	\$94,811
CONGESTED HOURS PER DAY*	9

*Delays Exceeding User-Specified Maximum

**USH 41: STH 125 TO USH 10 (WINNEBAGO AND OUTAGAMIE COUNTIES)
 CONTINUOUS (24 HOUR) 2 LANE CLOSURE
 NO DIVERSION ROUTE (MAX QUEUE METHOD)**

OCTOBER

Analyzed for 2009
 Construction Season

GRAPHICAL REPRESENTATION OF TRAFFIC MODEL INPUT AND OUTPUT
SUNDAY NORTHBOUND DIRECTION

