

USH 41: STH 125 TO USH 10 (WINNEBAGO AND OUTAGAMIE COUNTIES) CONTINUOUS (24 HOUR) CLOSURE NO DIVERSION ROUTE (MAX QUEUE METHOD)	OCTOBER
	Analyzed for 2009 Construction Season

SUMMARY OF TRAFFIC MODEL OUTPUT

MON-THUR SOUTHBOUND DIRECTION

TIME OF DAY	FLOWS AND CAPACITY IN VEH/HR						AVERAGE SPEEDS IN MPH			
	MAIN ROUTE		SITE CAPA CITY	FLOW		AV.DEL PER VEH (MINS)	AVERAGE QUEUE (VEH)	MAIN ROUTE		SITE
	DEMAND FLOW	PCT HEAVY		MAIN ROUTE	'DIVER TED'			WITHOUT WORK ZONE	WITH WORK ZONE	
MID-1 AM	376	0.0	3000	376	0	0.36	0	70.2	61.8	49.7
1-2 AM	211	0.0	3000	211	0	0.36	0	70.2	61.8	49.7
2-3 AM	161	0.0	3000	161	0	0.36	0	70.2	61.8	49.7
3-4 AM	198	0.0	3000	198	0	0.36	0	70.2	61.8	49.7
4-5 AM	413	0.0	3000	413	0	0.36	0	70.2	61.8	49.7
5-6 AM	1214	0.0	3000	1214	0	0.35	0	69.2	61.3	49.7
6-7 AM	2240	0.0	2999	2240	0	0.38	0	67.9	59.7	47.9
7-8 AM	3479	0.0	2999	3479	0	4.26	230	66.4	26.3	37.3
8-9 AM	2527	0.0	2999	2527	0	5.10	289	67.6	23.7	40.7
9-10 AM	1991	0.0	3000	1991	0	0.34	0	68.2	60.8	49.7
10-11 AM	2073	0.0	3000	2073	0	0.33	0	68.2	60.7	49.7
11AM-NOON	2345	0.0	3000	2345	0	0.33	0	67.8	60.5	49.7
NOON-1PM	2561	0.0	3000	2561	0	0.44	0	67.6	58.2	45.4
1-2 PM	2794	0.0	2999	2794	0	0.59	0	67.3	55.4	40.7
2-3 PM	3090	0.0	2999	3090	0	1.24	30	66.9	46.2	37.3
3-4 PM	3251	0.0	3000	3251	0	4.02	192	66.7	27.3	37.3
4-5 PM	3824	0.0	3000	3457	367	12.84+	698	64.7	13.2	37.3
5-6 PM	3502	0.0	3000	3015	487	16.11+	849	66.4	11.7	37.3
6-7 PM	2304	0.0	2999	2304	0	8.94+	518	67.9	16.7	41.5
7-8 PM	1770	0.0	3000	1770	0	0.42	5	68.6	59.4	49.7
8-9 PM	1607	0.0	3000	1607	0	0.34	0	68.7	61.0	49.7
9-10 PM	1311	0.0	3000	1311	0	0.35	0	69.1	61.2	49.7
10-11 PM	802	0.0	3000	802	0	0.35	0	69.7	61.5	49.7
11PM-MID	447	0.0	3000	447	0	0.36	0	70.2	61.8	49.7

+ INDICATES QUEUEING EXCEEDS USER-SPECIFIED MAXIMUM LIMIT

----- SITE BREAKDOWN DELAYS -----	
BREAKDOWN DURATION (MINS)	0
RANGE OF QUEUE DELAY - MIN (VEH-H) MAX	0.0
AV BREAKDOWNS PER DAY	0.00
AV QUEUE DELAY/DAY (VEH-H)	0.0
AV TOTAL DELAY/DAY (VEH-H)	0.0

----- SITE ACCIDENT DELAYS -----	
BREAKDOWN DURATION (MINS)	0
RANGE OF QUEUE DELAY - MIN (VEH-H) MAX	0
AV BREAKDOWNS PER DAY	0
AV QUEUE DELAY/DAY (VEH-H)	0
AV TOTAL DELAY/DAY (VEH-H)	0

AVERAGE ACCIDENT NUMBERS (PIA/DAY)	
MAIN ROUTE WITHOUT WORKS	0.0220
MAIN ROUTE WITH WORKS	0.0187
'DIVERSION'	0.0010
<small>PIA: Personal Injury Accidents</small>	
IMPACTS ON ROAD USERS	
ROAD USER COSTS PER DAY	\$39,396
CONGESTED HOURS PER DAY*	3

*Delays Exceeding User-Specified Maximum

**USH 41: STH 125 TO USH 10 (WINNEBAGO AND OUTAGAMIE COUNTIES)
 CONTINUOUS (24 HOUR) CLOSURE
 NO DIVERSION ROUTE (MAX QUEUE METHOD)**

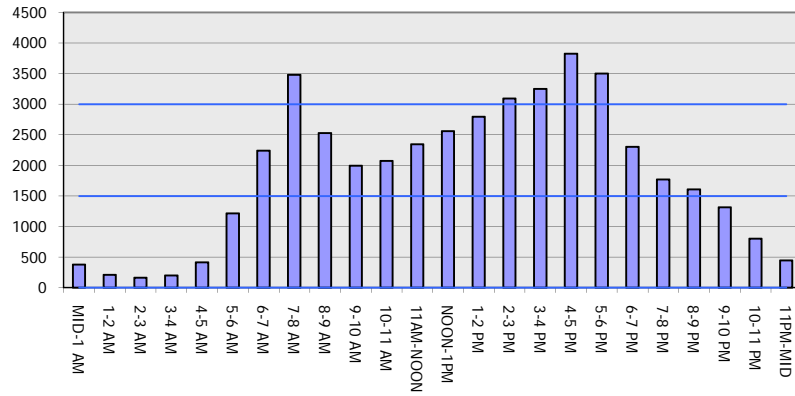
OCTOBER

Analyzed for 2009
 Construction Season

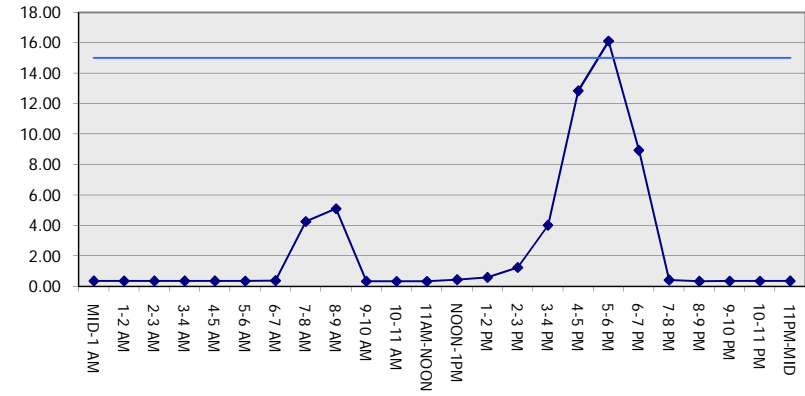
GRAPHICAL REPRESENTATION OF TRAFFIC MODEL INPUT AND OUTPUT

MON-THUR SOUTHBOUND DIRECTION

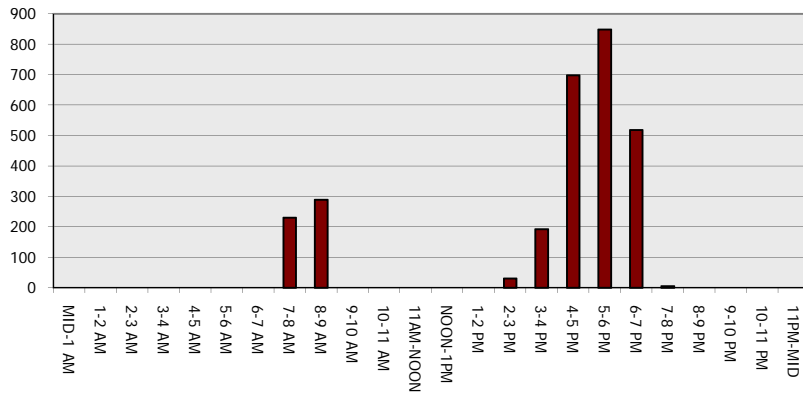
Main Route - Traffic Demand (Vehicles Per Hour)



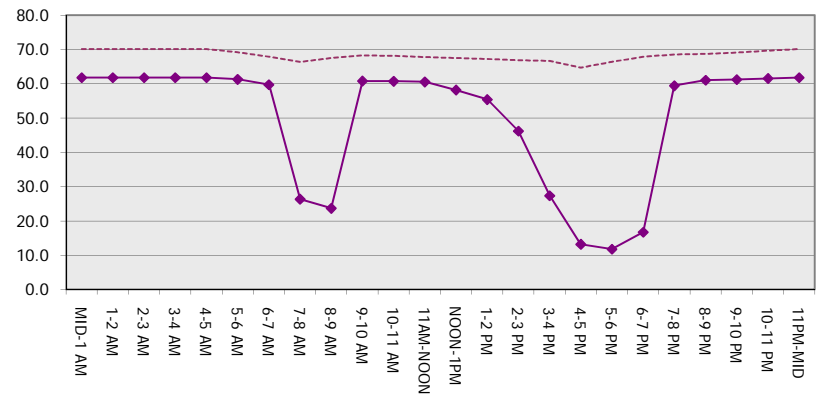
Main Route Average Delay Per Vehicle (Minutes)



Main Route - Average Queue Length (Vehicles)



Main Route - Average Speed (MPH)



USH 41: STH 125 TO USH 10 (WINNEBAGO AND OUTAGAMIE COUNTIES) CONTINUOUS (24 HOUR) CLOSURE NO DIVERSION ROUTE (MAX QUEUE METHOD)	OCTOBER
	Analyzed for 2009 Construction Season

SUMMARY OF TRAFFIC MODEL OUTPUT

MON-THUR NORTHBOUND DIRECTION

TIME OF DAY	FLOWS AND CAPACITY IN VEH/HR							AVERAGE SPEEDS IN MPH		
	MAIN ROUTE		SITE CAPA CITY	FLOW		AV.DEL PER VEH (MINS)	AVERAGE QUEUE (VEH)	MAIN ROUTE		SITE
	DEMAND FLOW	PCT HEAVY		MAIN ROUTE	'DIVER TED'			WITHOUT WORK ZONE	WITH WORK ZONE	
MID-1 AM	204	0.0	3000	204	0	0.36	0	70.2	61.8	49.7
1-2 AM	160	0.0	3000	160	0	0.36	0	70.2	61.8	49.7
2-3 AM	138	0.0	3000	138	0	0.36	0	70.2	61.8	49.7
3-4 AM	172	0.0	3000	172	0	0.36	0	70.2	61.8	49.7
4-5 AM	367	0.0	3000	367	0	0.36	0	70.2	61.8	49.7
5-6 AM	1067	0.0	3000	1067	0	0.35	0	69.4	61.4	49.7
6-7 AM	2046	0.0	2999	2046	0	0.33	0	68.2	60.7	49.7
7-8 AM	3420	0.0	2999	3420	0	3.61	189	66.5	29.1	37.3
8-9 AM	2702	0.0	2999	2702	0	5.99	307	67.4	21.2	38.4
9-10 AM	2253	0.0	3000	2253	0	0.48	10	67.9	57.9	49.6
10-11 AM	2283	0.0	3000	2283	0	0.33	0	67.9	60.6	49.7
11AM-NOON	2521	0.0	3000	2521	0	0.42	0	67.6	58.7	46.3
NOON-1PM	2537	0.0	3000	2537	0	0.43	0	67.6	58.5	46.0
1-2 PM	2515	0.0	3000	2515	0	0.41	0	67.6	58.8	46.5
2-3 PM	2731	0.0	2999	2731	0	0.55	0	67.3	56.1	42.0
3-4 PM	3392	0.0	2999	3392	0	3.04	156	66.5	31.9	37.3
4-5 PM	3984	0.0	3000	3474	509	13.76+	742	63.7	12.6	37.3
5-6 PM	3581	0.0	2999	2995	586	16.12+	850	66.3	11.7	37.3
6-7 PM	2269	0.0	2999	2269	0	9.72+	566	67.9	15.9	42.1
7-8 PM	1340	0.0	3000	1340	0	0.42	5	69.1	59.8	49.7
8-9 PM	1024	0.0	3000	1024	0	0.35	0	69.5	61.4	49.7
9-10 PM	813	0.0	3000	813	0	0.35	0	69.7	61.5	49.7
10-11 PM	634	0.0	3000	634	0	0.36	0	69.9	61.7	49.7
11PM-MID	392	0.0	3000	392	0	0.36	0	70.2	61.8	49.7

+ INDICATES QUEUEING EXCEEDS USER-SPECIFIED MAXIMUM LIMIT

----- SITE BREAKDOWN DELAYS -----	
BREAKDOWN DURATION (MINS)	0
RANGE OF QUEUE DELAY - MIN	0.0
(VEH-H) MAX	0.0
AV BREAKDOWNS PER DAY	0.00
AV QUEUE DELAY/DAY (VEH-H)	0.0
AV TOTAL DELAY/DAY (VEH-H)	0.0

----- SITE ACCIDENT DELAYS -----	
BREAKDOWN DURATION (MINS)	0
RANGE OF QUEUE DELAY - MIN	0
(VEH-H) MAX	0
AV BREAKDOWNS PER DAY	0
AV QUEUE DELAY/DAY (VEH-H)	0
AV TOTAL DELAY/DAY (VEH-H)	0

AVERAGE ACCIDENT NUMBERS (PIA/DAY)	
MAIN ROUTE WITHOUT WORKS	0.0210
MAIN ROUTE WITH WORKS	0.0177
'DIVERSION'	0.0013

PIA: Personal Injury Accidents

ECONOMIC IMPACT ON ROAD USERS	
ROAD USER COSTS PER DAY	\$40,135
CONGESTED HOURS PER DAY*	3

*Delays Exceeding User-Specified Maximum

**USH 41: STH 125 TO USH 10 (WINNEBAGO AND OUTAGAMIE COUNTIES)
 CONTINUOUS (24 HOUR) CLOSURE
 NO DIVERSION ROUTE (MAX QUEUE METHOD)**

OCTOBER

Analyzed for 2009
 Construction Season

GRAPHICAL REPRESENTATION OF TRAFFIC MODEL INPUT AND OUTPUT
MON-THUR NORTHBOUND DIRECTION

