

USH 41: STH 125 TO USH 10 (WINNEBAGO AND OUTAGAMIE COUNTIES) CONTINUOUS (24 HOUR) 2 LANE CLOSURE NO DIVERSION ROUTE (MAX QUEUE METHOD)	AUGUST
	Analyzed for 2009 Construction Season

SUMMARY OF TRAFFIC MODEL OUTPUT

SUNDAY SOUTHBOUND DIRECTION

TIME OF DAY	FLOWS AND CAPACITY IN VEH/HR						AVERAGE SPEEDS IN MPH				
	MAIN ROUTE		SITE CAPA CITY	FLOW		AV.DEL PER VEH (MINS)	AVERAGE QUEUE (VEH)	MAIN ROUTE		SITE	
	DEMAND FLOW	PCT HEAVY		MAIN ROUTE	'DIVER TED'			WITHOUT WORK ZONE	WITH WORK ZONE		
MID-1 AM	814	0.0	1500	814	0	0.57	0	69.7	57.5	42.4	
1-2 AM	326	0.0	1500	326	0	0.51	0	70.2	58.8	44.2	
2-3 AM	282	0.0	1500	282	0	0.51	0	70.2	58.9	44.3	
3-4 AM	166	0.0	1500	166	0	0.49	0	70.2	59.2	44.8	
4-5 AM	165	0.0	1500	165	0	0.49	0	70.2	59.2	44.8	
5-6 AM	243	0.0	1500	243	0	0.50	0	70.2	59.0	44.5	
6-7 AM	390	0.0	1500	390	0	0.52	0	70.2	58.7	43.9	
7-8 AM	553	0.0	1500	553	0	0.54	0	70.0	58.2	43.3	
8-9 AM	986	0.0	1499	986	0	0.59	0	69.5	57.0	41.7	
9-10 AM	1464	0.0	1499	1464	0	1.37	12	68.9	45.7	32.7	
10-11 AM	2065	0.0	1500	1863	202	9.82+	265	68.2	14.8	30.8	
11AM-NOON	2536	0.0	1500	1500	1036	16.33+	400	67.6	9.7	30.8	
NOON-1PM	2815	0.0	1500	1500	1315	16.31+	400	67.3	9.7	30.8	
1-2 PM	2877	0.0	1500	1500	1377	16.31+	400	67.1	9.7	30.8	
2-3 PM	2975	0.0	1500	1500	1475	16.30+	400	67.1	9.7	30.8	
3-4 PM	3115	0.0	1500	1500	1615	16.30+	400	66.9	9.7	30.8	
4-5 PM	2904	0.0	1500	1500	1404	16.31+	400	67.1	9.7	30.8	
5-6 PM	2645	0.0	1500	1500	1145	16.32+	400	67.4	9.7	30.8	
6-7 PM	2159	0.0	1500	1500	659	16.34+	400	68.1	9.7	30.8	
7-8 PM	1729	0.0	1500	1500	229	16.37+	400	68.6	9.7	30.8	
8-9 PM	1244	0.0	1499	1244	0	12.29+	308	69.2	12.4	31.5	
9-10 PM	930	0.0	1500	930	0	1.12	24	69.6	49.0	41.7	
10-11 PM	605	0.0	1500	605	0	0.54	0	70.0	58.1	43.1	
11PM-MID	378	0.0	1500	378	0	0.52	0	70.2	58.7	44.0	

+ INDICATES QUEUEING EXCEEDS USER-SPECIFIED MAXIMUM LIMIT

----- SITE BREAKDOWN DELAYS -----	
BREAKDOWN DURATION (MINS)	0
RANGE OF QUEUE DELAY - MIN (VEH-H) MAX	0.0
AV BREAKDOWNS PER DAY	0.00
AV QUEUE DELAY/DAY (VEH-H)	0.0
AV TOTAL DELAY/DAY (VEH-H)	0.0

----- SITE ACCIDENT DELAYS -----	
BREAKDOWN DURATION (MINS)	0
RANGE OF QUEUE DELAY - MIN (VEH-H) MAX	0
AV BREAKDOWNS PER DAY	0
AV QUEUE DELAY/DAY (VEH-H)	0
AV TOTAL DELAY/DAY (VEH-H)	0

AVERAGE ACCIDENT NUMBERS (PIA/DAY)	
MAIN ROUTE WITHOUT WORKS	0.0170
MAIN ROUTE WITH WORKS	0.0102
'DIVERSION'	0.0120
PIA: Personal Injury Accidents	
IMPACTS ON ROAD USERS	
ROAD USER COSTS PER DAY	\$120,768
CONGESTED HOURS PER DAY*	11

*Delays Exceeding User-Specified Maximum

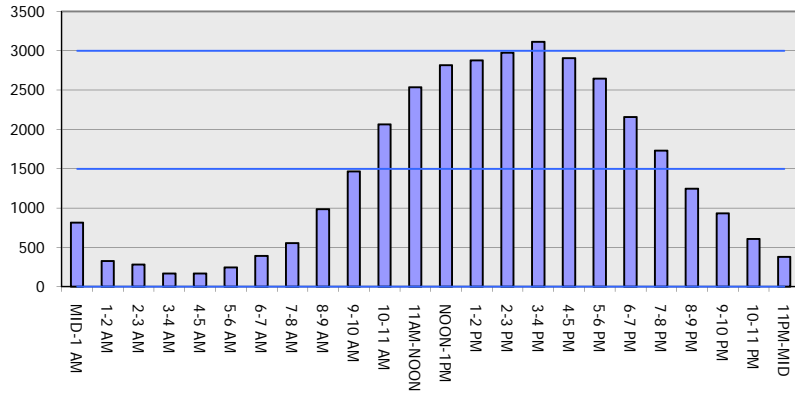
**USH 41: STH 125 TO USH 10 (WINNEBAGO AND OUTAGAMIE COUNTIES)
 CONTINUOUS (24 HOUR) 2 LANE CLOSURE
 NO DIVERSION ROUTE (MAX QUEUE METHOD)**

AUGUST
 Analyzed for 2009
 Construction Season

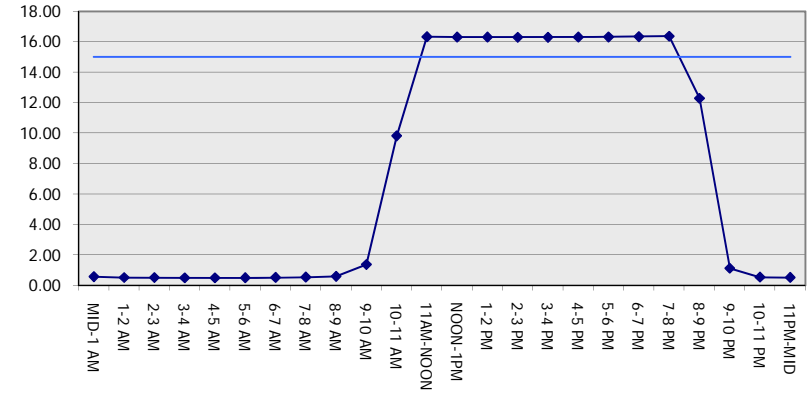
GRAPHICAL REPRESENTATION OF TRAFFIC MODEL INPUT AND OUTPUT

SUNDAY SOUTHBOUND DIRECTION

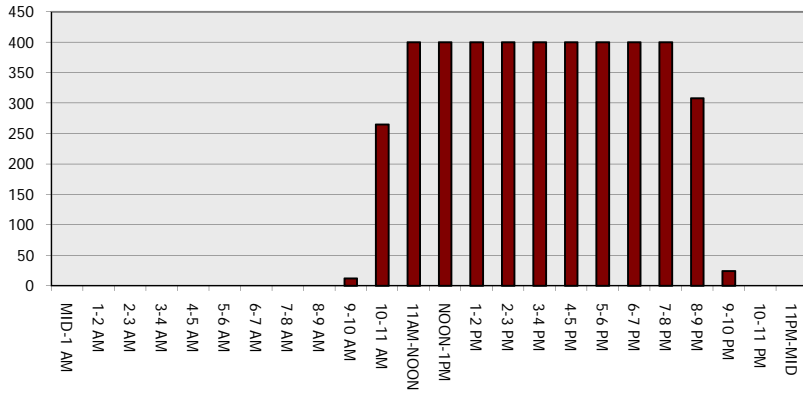
Main Route - Traffic Demand (Vehicles Per Hour)



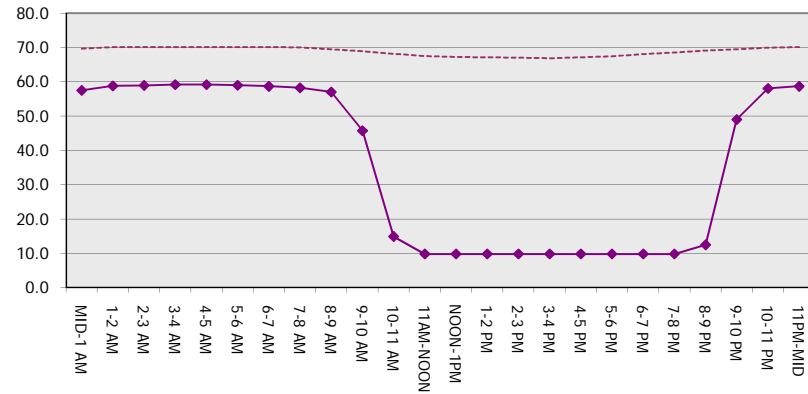
Main Route Average Delay Per Vehicle (Minutes)



Main Route - Average Queue Length (Vehicles)



Main Route - Average Speed (MPH)



USH 41: STH 125 TO USH 10 (WINNEBAGO AND OUTAGAMIE COUNTIES) CONTINUOUS (24 HOUR) 2 LANE CLOSURE NO DIVERSION ROUTE (MAX QUEUE METHOD)	AUGUST
	Analyzed for 2009 Construction Season

SUMMARY OF TRAFFIC MODEL OUTPUT

SUNDAY NORTHBOUND DIRECTION

TIME OF DAY	FLOWS AND CAPACITY IN VEH/HR						AVERAGE SPEEDS IN MPH			
	MAIN ROUTE		SITE CAPA CITY	FLOW		AV.DEL PER VEH (MINS)	AVERAGE QUEUE (VEH)	MAIN ROUTE		SITE
	DEMAND FLOW	PCT HEAVY		MAIN ROUTE	'DIVER TED'			WITHOUT WORK ZONE	WITH WORK ZONE	
MID-1 AM	336	0.0	1500	336	0	0.51	0	70.2	58.8	44.2
1-2 AM	213	0.0	1500	213	0	0.50	0	70.2	59.1	44.6
2-3 AM	182	0.0	1500	182	0	0.49	0	70.2	59.1	44.8
3-4 AM	110	0.0	1500	110	0	0.49	0	70.2	59.3	45.0
4-5 AM	111	0.0	1500	111	0	0.49	0	70.2	59.1	44.6
5-6 AM	216	0.0	1500	216	0	0.50	0	70.2	58.9	44.3
6-7 AM	309	0.0	1500	309	0	0.51	0	70.2	58.5	43.7
7-8 AM	453	0.0	1500	453	0	0.53	0	69.9	57.9	42.8
8-9 AM	678	0.0	1500	678	0	0.55	0	69.2	54.0	37.4
9-10 AM	1230	0.0	1499	1230	0	0.76	0	68.4	21.7	30.8
10-11 AM	1894	0.0	1499	1894	0	5.84	163	67.9	9.7	30.8
11AM-NOON	2309	0.0	1499	1500	809	16.34+	399	67.6	9.7	30.8
NOON-1PM	2494	0.0	1500	1500	994	16.33+	400	67.8	9.7	30.8
1-2 PM	2388	0.0	1500	1500	888	16.33+	400	68.0	9.7	30.8
2-3 PM	2315	0.0	1500	1500	815	16.34+	400	68.1	9.7	30.8
3-4 PM	2181	0.0	1500	1500	681	16.34+	400	68.4	9.7	30.8
4-5 PM	2095	0.0	1500	1500	595	16.35+	400	68.7	9.7	30.8
5-6 PM	1863	0.0	1500	1500	363	16.36+	399	69.2	13.3	31.5
6-7 PM	1614	0.0	1500	1502	112	16.36+	282	69.4	47.0	39.5
7-8 PM	1240	0.0	1499	1240	0	1.28	26	69.7	57.4	42.2
8-9 PM	1095	0.0	1500	1095	0	0.57	0	70.0	58.2	43.2
9-10 PM	838	0.0	1500	838	0	0.54	0	70.2	58.8	44.2
10-11 PM	570	0.0	1500	570	0	0.51	0			
11PM-MID	336	0.0	1500	336	0					

+ INDICATES QUEUEING EXCEEDS USER-SPECIFIED MAXIMUM LIMIT

----- SITE BREAKDOWN DELAYS -----	
BREAKDOWN DURATION (MINS)	0
RANGE OF QUEUE DELAY - MIN (VEH-H) MAX	0.0
AV BREAKDOWNS PER DAY	0.00
AV QUEUE DELAY/DAY (VEH-H)	0.0
AV TOTAL DELAY/DAY (VEH-H)	0.0

----- SITE ACCIDENT DELAYS -----	
BREAKDOWN DURATION (MINS)	0
RANGE OF QUEUE DELAY - MIN (VEH-H) MAX	0
AV BREAKDOWNS PER DAY	0
AV QUEUE DELAY/DAY (VEH-H)	0
AV TOTAL DELAY/DAY (VEH-H)	0

AVERAGE ACCIDENT NUMBERS (PIA/DAY)	
MAIN ROUTE WITHOUT WORKS	0.0134
MAIN ROUTE WITH WORKS	0.0093
'DIVERSION'	0.0060

PIA: Personal Injury Accidents

ECONOMIC IMPACT ON ROAD USERS	
ROAD USER COSTS PER DAY	\$87,776
CONGESTED HOURS PER DAY*	8

*Delays Exceeding User-Specified Maximum

**USH 41: STH 125 TO USH 10 (WINNEBAGO AND OUTAGAMIE COUNTIES)
 CONTINUOUS (24 HOUR) 2 LANE CLOSURE
 NO DIVERSION ROUTE (MAX QUEUE METHOD)**

AUGUST
 Analyzed for 2009
 Construction Season

GRAPHICAL REPRESENTATION OF TRAFFIC MODEL INPUT AND OUTPUT
SUNDAY NORTHBOUND DIRECTION

