

USH 41: STH 125 TO USH 10 (WINNEBAGO AND OUTAGAMIE COUNTIES) CONTINUOUS (24 HOUR) CLOSURE NO DIVERSION ROUTE (MAX QUEUE METHOD)	AUGUST
	Analyzed for 2009 Construction Season

SUMMARY OF TRAFFIC MODEL OUTPUT

MON-THUR SOUTHBOUND DIRECTION

TIME OF DAY	FLOWS AND CAPACITY IN VEH/HR						AVERAGE SPEEDS IN MPH			
	MAIN ROUTE		SITE CAPA CITY	FLOW		AV.DEL PER VEH (MINS)	AVERAGE QUEUE (VEH)	MAIN ROUTE		SITE
	DEMAND FLOW	PCT HEAVY		MAIN ROUTE	'DIVER TED'			WITHOUT WORK ZONE	WITH WORK ZONE	
MID-1 AM	310	0.0	3000	310	0	0.36	0	70.2	61.8	49.7
1-2 AM	190	0.0	3000	190	0	0.36	0	70.2	61.8	49.7
2-3 AM	178	0.0	3000	178	0	0.36	0	70.2	61.8	49.7
3-4 AM	218	0.0	3000	218	0	0.36	0	70.2	61.8	49.7
4-5 AM	421	0.0	3000	421	0	0.36	0	70.2	61.8	49.7
5-6 AM	1249	0.0	3000	1249	0	0.35	0	69.2	61.3	49.7
6-7 AM	2252	0.0	2999	2252	0	0.37	0	67.9	59.8	48.1
7-8 AM	3320	0.0	2999	3320	0	3.20	155	66.6	31.1	37.3
8-9 AM	2394	0.0	2999	2394	0	1.71	110	67.8	41.7	44.8
9-10 AM	2027	0.0	3000	2027	0	0.33	0	68.2	60.7	49.7
10-11 AM	2166	0.0	3000	2166	0	0.33	0	68.1	60.7	49.7
11AM-NOON	2431	0.0	3000	2431	0	0.36	0	67.7	59.9	48.5
NOON-1PM	2674	0.0	2999	2674	0	0.52	0	67.4	56.8	43.0
1-2 PM	2969	0.0	2999	2969	0	0.78	4	67.1	52.4	38.1
2-3 PM	3239	0.0	3000	3239	0	2.79	125	66.7	33.3	37.3
3-4 PM	3384	0.0	3000	3384	0	8.20	429	66.5	17.1	37.3
4-5 PM	3907	0.0	2999	3228	679	15.55+	826	64.1	11.9	37.3
5-6 PM	3663	0.0	2999	2994	668	16.10+	850	65.8	11.7	37.3
6-7 PM	2397	0.0	2999	2397	0	11.31+	619	67.8	14.3	39.5
7-8 PM	1835	0.0	3000	1835	0	0.68	31	68.4	54.8	49.7
8-9 PM	1757	0.0	3000	1757	0	0.34	0	68.6	60.9	49.7
9-10 PM	1496	0.0	3000	1496	0	0.34	0	68.9	61.1	49.7
10-11 PM	995	0.0	3000	995	0	0.35	0	69.5	61.4	49.7
11PM-MID	628	0.0	3000	628	0	0.36	0	69.9	61.7	49.7

+ INDICATES QUEUEING EXCEEDS USER-SPECIFIED MAXIMUM LIMIT

----- SITE BREAKDOWN DELAYS -----	
BREAKDOWN DURATION (MINS)	0
RANGE OF QUEUE DELAY - MIN (VEH-H) MAX	0.0
AV BREAKDOWNS PER DAY	0.00
AV QUEUE DELAY/DAY (VEH-H)	0.0
AV TOTAL DELAY/DAY (VEH-H)	0.0

----- SITE ACCIDENT DELAYS -----	
BREAKDOWN DURATION (MINS)	0
RANGE OF QUEUE DELAY - MIN (VEH-H) MAX	0
AV BREAKDOWNS PER DAY	0
AV QUEUE DELAY/DAY (VEH-H)	0
AV TOTAL DELAY/DAY (VEH-H)	0

AVERAGE ACCIDENT NUMBERS (PIA/DAY)	
MAIN ROUTE WITHOUT WORKS	0.0227
MAIN ROUTE WITH WORKS	0.0191
'DIVERSION'	0.0015
<small>PIA: Personal Injury Accidents</small>	
IMPACTS ON ROAD USERS	
ROAD USER COSTS PER DAY	\$45,694
CONGESTED HOURS PER DAY*	3

*Delays Exceeding User-Specified Maximum

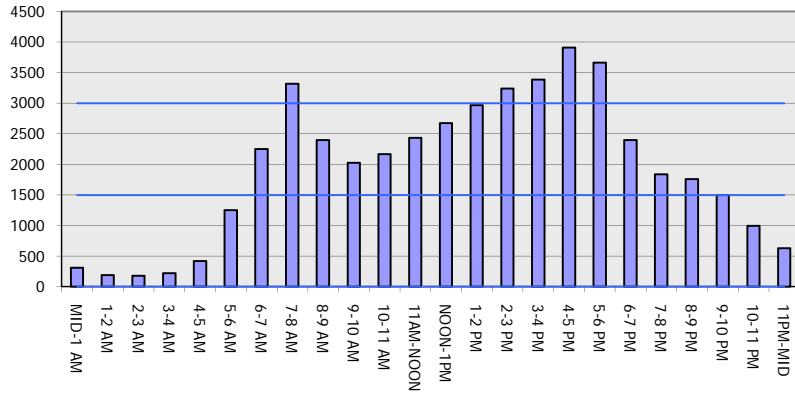
**USH 41: STH 125 TO USH 10 (WINNEBAGO AND OUTAGAMIE COUNTIES)
CONTINUOUS (24 HOUR) CLOSURE
NO DIVERSION ROUTE (MAX QUEUE METHOD)**

AUGUST
Analyzed for 2009
Construction Season

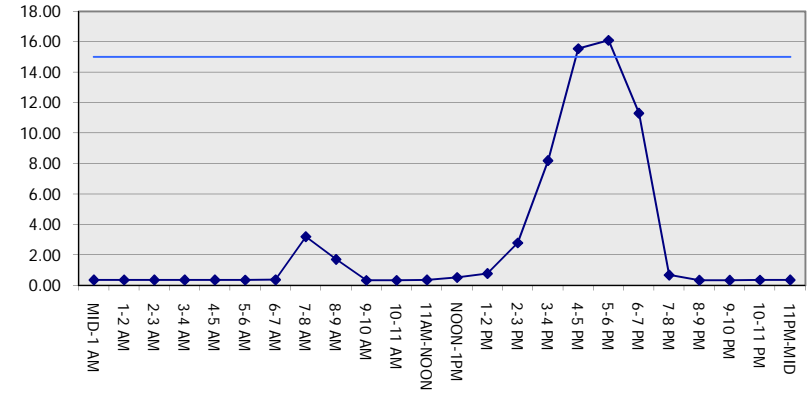
GRAPHICAL REPRESENTATION OF TRAFFIC MODEL INPUT AND OUTPUT

MON-THUR SOUTHBOUND DIRECTION

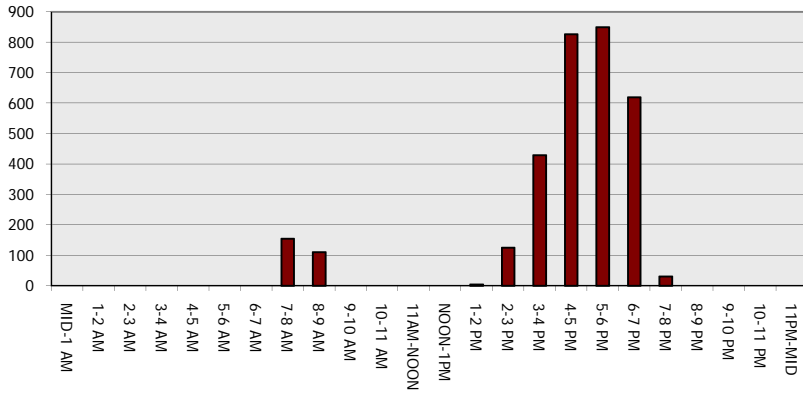
Main Route - Traffic Demand (Vehicles Per Hour)



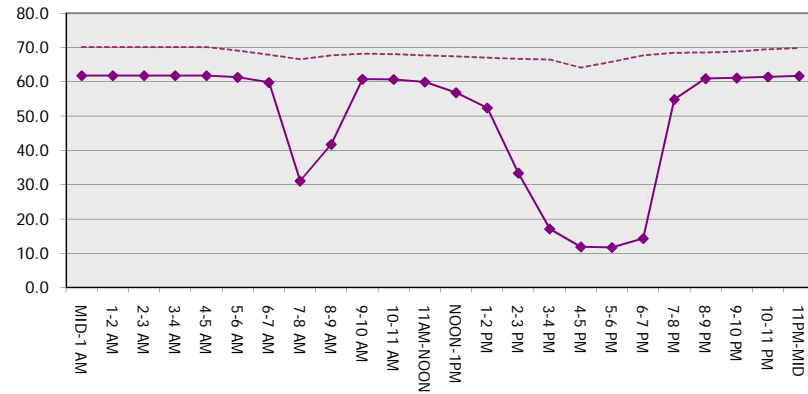
Main Route Average Delay Per Vehicle (Minutes)



Main Route - Average Queue Length (Vehicles)



Main Route - Average Speed (MPH)



USH 41: STH 125 TO USH 10 (WINNEBAGO AND OUTAGAMIE COUNTIES) CONTINUOUS (24 HOUR) CLOSURE NO DIVERSION ROUTE (MAX QUEUE METHOD)	AUGUST
	Analyzed for 2009 Construction Season

SUMMARY OF TRAFFIC MODEL OUTPUT

MON-THUR NORTHBOUND DIRECTION

TIME OF DAY	FLOWS AND CAPACITY IN VEH/HR							AVERAGE SPEEDS IN MPH		
	MAIN ROUTE		SITE CAPA CITY	FLOW		AV.DEL PER VEH (MINS)	AVERAGE QUEUE (VEH)	MAIN ROUTE		SITE
	DEMAND FLOW	PCT HEAVY		MAIN ROUTE	'DIVER TED'			WITHOUT WORK ZONE	WITH WORK ZONE	
MID-1 AM	248	0.0	3000	248	0	0.36	0	70.2	61.8	49.7
1-2 AM	184	0.0	3000	184	0	0.36	0	70.2	61.8	49.7
2-3 AM	164	0.0	3000	164	0	0.36	0	70.2	61.8	49.7
3-4 AM	179	0.0	3000	179	0	0.36	0	70.2	61.8	49.7
4-5 AM	388	0.0	3000	388	0	0.36	0	70.2	61.8	49.7
5-6 AM	1077	0.0	3000	1077	0	0.35	0	69.4	61.4	49.7
6-7 AM	2025	0.0	2999	2025	0	0.33	0	68.2	60.7	49.7
7-8 AM	3192	0.0	2999	3192	0	2.03	80	66.8	38.6	37.3
8-9 AM	2520	0.0	2999	2520	0	1.11	50	67.6	48.2	44.8
9-10 AM	2282	0.0	3000	2282	0	0.33	0	67.9	60.6	49.7
10-11 AM	2441	0.0	3000	2441	0	0.36	0	67.7	59.8	48.3
11AM-NOON	2660	0.0	3000	2660	0	0.51	0	67.4	56.9	43.3
NOON-1PM	2707	0.0	3000	2707	0	0.54	0	67.4	56.4	42.3
1-2 PM	2742	0.0	2999	2742	0	0.56	0	67.3	56.0	41.6
2-3 PM	2967	0.0	2999	2967	0	0.79	5	67.1	52.2	38.1
3-4 PM	3361	0.0	3000	3361	0	3.39	170	66.6	30.1	37.3
4-5 PM	3978	0.0	3000	3475	503	13.64+	736	63.7	12.7	37.3
5-6 PM	3564	0.0	3000	2998	566	16.12+	849	66.3	11.7	37.3
6-7 PM	2397	0.0	2999	2397	0	11.24+	617	67.8	14.3	39.7
7-8 PM	1532	0.0	3000	1532	0	0.60	24	68.8	56.3	49.7
8-9 PM	1190	0.0	3000	1190	0	0.35	0	69.2	61.3	49.7
9-10 PM	902	0.0	3000	902	0	0.35	0	69.6	61.5	49.7
10-11 PM	738	0.0	3000	738	0	0.35	0	69.8	61.6	49.7
11PM-MID	478	0.0	3000	478	0	0.36	0	70.1	61.8	49.7

+ INDICATES QUEUEING EXCEEDS USER-SPECIFIED MAXIMUM LIMIT

----- SITE BREAKDOWN DELAYS -----	
BREAKDOWN DURATION (MINS)	0
RANGE OF QUEUE DELAY - MIN (VEH-H) MAX	0.0
AV BREAKDOWNS PER DAY	0.00
AV QUEUE DELAY/DAY (VEH-H)	0.0
AV TOTAL DELAY/DAY (VEH-H)	0.0

----- SITE ACCIDENT DELAYS -----	
BREAKDOWN DURATION (MINS)	0
RANGE OF QUEUE DELAY - MIN (VEH-H) MAX	0
AV BREAKDOWNS PER DAY	0
AV QUEUE DELAY/DAY (VEH-H)	0
AV TOTAL DELAY/DAY (VEH-H)	0

AVERAGE ACCIDENT NUMBERS (PIA/DAY)	
MAIN ROUTE WITHOUT WORKS	0.0217
MAIN ROUTE WITH WORKS	0.0183
'DIVERSION'	0.0012

PIA: Personal Injury Accidents

ECONOMIC IMPACT ON ROAD USERS	
ROAD USER COSTS PER DAY	\$37,433
CONGESTED HOURS PER DAY*	3

*Delays Exceeding User-Specified Maximum

**USH 41: STH 125 TO USH 10 (WINNEBAGO AND OUTAGAMIE COUNTIES)
 CONTINUOUS (24 HOUR) CLOSURE
 NO DIVERSION ROUTE (MAX QUEUE METHOD)**

AUGUST
 Analyzed for 2009
 Construction Season

GRAPHICAL REPRESENTATION OF TRAFFIC MODEL INPUT AND OUTPUT
MON-THUR NORTHBOUND DIRECTION

