

STH 441: USH 41 TO RACINE ST (WINNEBAGO COUNTY) CONTINUOUS (24 HOUR) CLOSURE DIVERSION ROUTE: PROSPECT AVENUE - STH 47	MAY
	Analyzed for 2009 Construction Season

SUMMARY OF TRAFFIC MODEL OUTPUT

SUNDAY WESTBOUND DIRECTION

TIME OF DAY	FLOWS AND CAPACITY IN VEH/HR							AVERAGE SPEEDS IN MPH							
	MAIN ROUTE		ALTERNATE ROUTE		SITE CAPA CITY	FLOW MAIN ROUTE	FLOW DIVER -TING	TOTAL DIVN FLOW	AV.DEL PER VEH (MINS)	AVERAGE QUEUE (VEH)	MAIN ROUTE		ALTERNATE ROUTE		
	DEMAND FLOW	PCT HEAVY	NORMAL FLOW	PCT HEAVY							WITHOUT WORK ZN	WITH WORK ZN	SITE	WITHOUT WORK ZN	WITH WORK ZN
MID-1 AM	400	0.0	123	0.0	1500	400	0	123	0.46	0	65.6	46.2	43.9	23.9	23.9
1-2 AM	232	0.0	71	0.0	1500	232	0	71	0.45	0	66.0	46.8	44.5	24.3	24.3
2-3 AM	176	0.0	54	0.0	1500	176	0	54	0.44	0	66.1	47.1	44.8	24.4	24.4
3-4 AM	163	0.0	50	0.0	1500	163	0	50	0.44	0	66.1	47.1	44.8	24.5	24.5
4-5 AM	133	0.0	41	0.0	1500	133	0	41	0.44	0	66.1	47.3	45.0	24.5	24.5
5-6 AM	307	0.0	94	0.0	1500	307	0	94	0.45	0	65.8	46.6	44.3	24.1	24.1
6-7 AM	437	0.0	134	0.0	1500	437	0	134	0.46	0	65.6	46.1	43.7	23.8	23.8
7-8 AM	515	0.0	158	0.0	1500	515	0	158	0.47	0	65.5	45.8	43.5	23.7	23.7
8-9 AM	820	0.0	251	0.0	1500	820	0	251	0.50	0	64.8	44.6	42.3	22.9	22.9
9-10 AM	1146	0.0	351	0.0	1499	1146	0	351	0.60	0	64.3	41.8	39.4	22.2	22.2
10-11 AM	1558	0.0	478	0.0	1499	1558	0	478	1.47	15	63.5	27.7	30.9	21.2	21.2
11A-NOON	1683	0.0	516	0.0	1500	1683	0	516	6.01	142	63.3	12.4	30.8	20.9	21.5
NOON-1PM	1907	0.0	585	0.0	1500	1838	69	654	16.86	437	62.8	7.7	30.8	20.4	21.7
1-2 PM	1754	0.0	537	0.0	1499	1453	300	838	21.67	557	63.1	7.0	30.8	20.7	20.8
2-3 PM	1644	0.0	504	0.0	1500	1473	170	675	20.19	517	63.3	7.1	30.8	21.0	21.9
3-4 PM	1712	0.0	525	0.0	1500	1520	192	717	20.55	527	63.2	7.1	30.8	20.8	21.6
4-5 PM	1585	0.0	486	0.0	1499	1459	126	612	19.68	503	63.4	7.2	30.8	21.1	22.4
5-6 PM	1518	0.0	465	0.0	1500	1472	47	512	18.85	481	63.5	7.3	30.8	21.3	23.0
6-7 PM	1175	0.0	360	0.0	1499	1175	0	360	12.14	315	64.2	8.9	32.0	22.0	23.5
7-8 PM	955	0.0	293	0.0	1500	955	0	293	0.82	18	64.6	37.6	41.7	22.6	22.7
8-9 PM	831	0.0	254	0.0	1500	831	0	254	0.50	0	64.8	44.6	42.3	22.9	22.9
9-10 PM	651	0.0	200	0.0	1500	651	0	200	0.49	0	65.1	45.3	42.9	23.3	23.3
10-11 PM	423	0.0	130	0.0	1500	423	0	130	0.46	0	65.6	46.1	43.8	23.8	23.8
11PM-MID	206	0.0	63	0.0	1500	206	0	63	0.44	0	66.0	46.9	44.6	24.3	24.3

----- SITE BREAKDOWN DELAYS -----	
BREAKDOWN DURATION (MINS)	0
RANGE OF QUEUE DELAY - MIN	0.0
(VEH-H) MAX	0.0
RANGE OF DIVN DELAY - MIN	0.0
(VEH-H) MAX	0.0
AV BREAKDOWNS PER DAY	0.00
AV QUEUE DELAY/DAY (VEH-H)	0.0
AV DIVN DELAY/DAY (VEH-H)	0.0
AV TOTAL DELAY/DAY (VEH-H)	0.0

----- SITE ACCIDENT DELAYS -----	
ACCIDENT DURATION (MINS)	0
RANGE OF QUEUE DELAY - MIN	0.0
(VEH-H) MAX	0.0
RANGE OF DIVN DELAY - MIN	0.0
(VEH-H) MAX	0.0
AV ACCIDENTS PER DAY	0.00
AV QUEUE DELAY/DAY (VEH-H)	0.0
AV DIVN DELAY/DAY (VEH-H)	0.0
AV TOTAL DELAY/DAY (VEH-H)	0.0

AVERAGE ACCIDENT NUMBERS (PIA/DAY)	
MAIN ROUTE WITHOUT WORKS	0.0042
MAIN ROUTE WITH WORKS	0.0026
DIVERSION	0.0609

PIA: Personal Injury Accidents

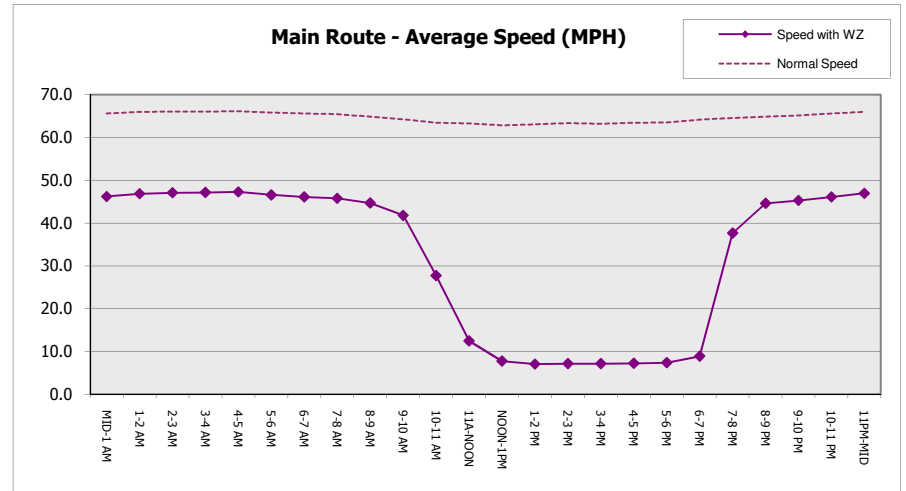
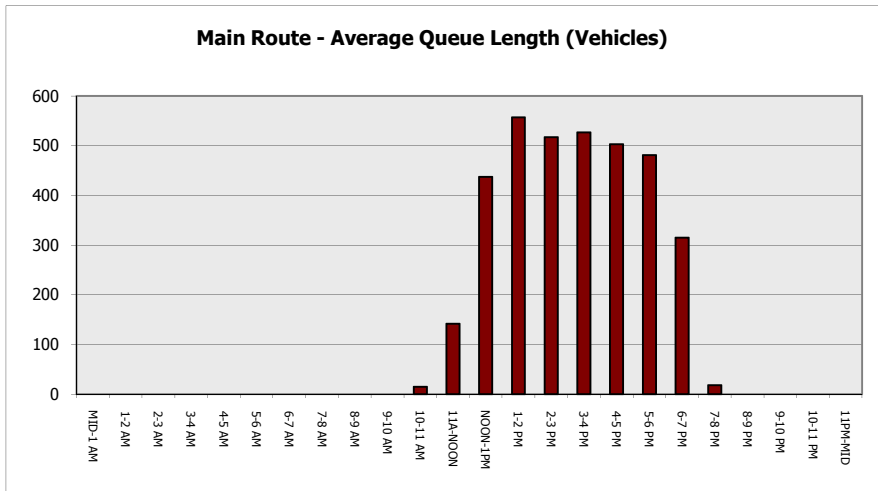
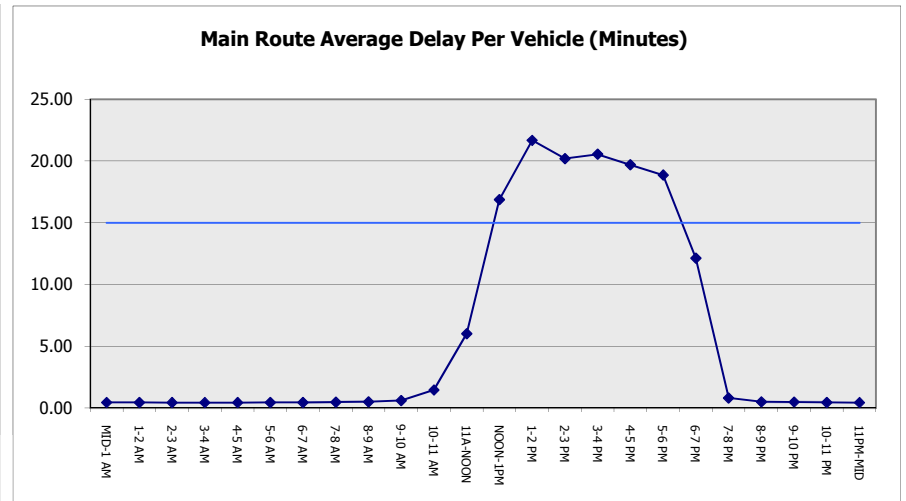
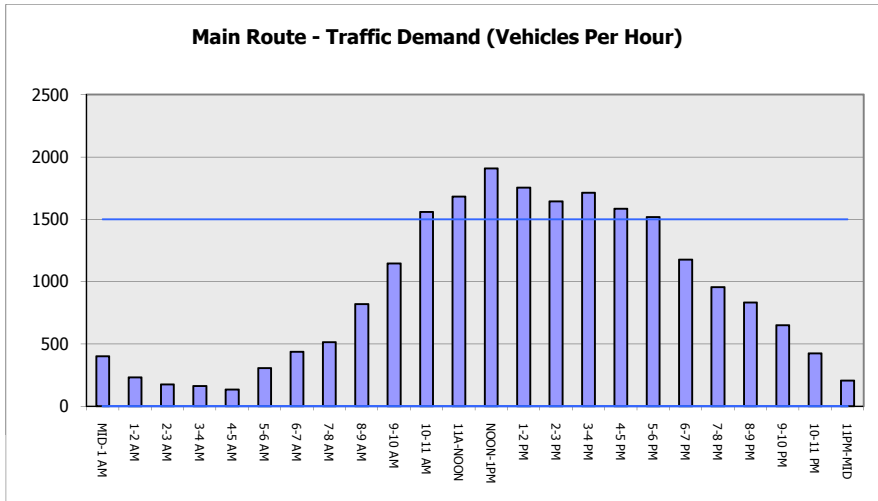
IMPACTS ON ROAD USERS	
ROAD USER COSTS PER DAY (DOLLARS)	\$70,627
CONGESTED HOURS PER DAY*	6

*Delays Exceeding 15 Minutes

STH 441: USH 41 TO RACINE ST (WINNEBAGO COUNTY)
CONTINUOUS (24 HOUR) CLOSURE
DIVERSION ROUTE: PROSPECT AVENUE - STH 47

MAY
 Analyzed for 2009
 Construction Season

GRAPHICAL REPRESENTATION OF TRAFFIC MODEL INPUT AND OUTPUT
SUNDAY WESTBOUND DIRECTION



STH 441: USH 41 TO RACINE ST (WINNEBAGO COUNTY) CONTINUOUS (24 HOUR) CLOSURE DIVERSION ROUTE: PROSPECT AVENUE - STH 47	MAY
	Analyzed for 2009 Construction Season

SUMMARY OF TRAFFIC MODEL OUTPUT	
SUNDAY	EASTBOUND DIRECTION

TIME OF DAY	FLOWS AND CAPACITY IN VEH/HR								AVERAGE SPEEDS IN MPH						
	MAIN		DIVERSION		SITE CAPA CITY	FLOW MAIN ROUTE	FLOW DIVER -TING	TOTAL DIVN FLOW	AV.DEL PER VEH (MINS)	AVERAGE QUEUE (VEH)	MAIN ROUTE		SITE	ALTERNATE ROUTE	
	DEMAND FLOW	PCT HEAVY	NORMAL FLOW	PCT HEAVY							WITHOUT WORK ZN	WITH WORK ZN		WITHOUT WORK ZN	WITH WORK ZN
MID-1 AM	427	0.0	131	0.0	1500	427	0	131	0.46	0	65.6	46.1	43.8	23.8	23.8
1-2 AM	269	0.0	82	0.0	1500	269	0	82	0.45	0	65.9	46.7	44.4	24.2	24.2
2-3 AM	234	0.0	72	0.0	1500	234	0	72	0.45	0	66.0	46.8	44.5	24.3	24.3
3-4 AM	155	0.0	47	0.0	1500	155	0	47	0.44	0	66.1	47.1	44.8	24.5	24.5
4-5 AM	118	0.0	36	0.0	1500	118	0	36	0.43	0	66.1	47.3	45.0	24.6	24.6
5-6 AM	274	0.0	84	0.0	1500	274	0	84	0.45	0	65.9	46.7	44.4	24.2	24.2
6-7 AM	527	0.0	162	0.0	1500	527	0	162	0.47	0	65.4	45.7	43.4	23.6	23.6
7-8 AM	503	0.0	154	0.0	1500	503	0	154	0.47	0	65.5	45.8	43.5	23.7	23.7
8-9 AM	861	0.0	264	0.0	1500	861	0	264	0.51	0	64.8	44.5	42.2	22.8	22.8
9-10 AM	1194	0.0	367	0.0	1499	1194	0	367	0.63	0	64.1	41.0	38.6	22.0	22.0
10-11 AM	1636	0.0	501	0.0	1499	1636	0	501	2.66	53	63.3	19.9	30.8	21.0	21.2
11A-NOON	1658	0.0	509	0.0	1499	1658	0	509	8.34	201	63.3	10.4	30.8	20.9	21.8
NOON-1PM	2081	0.0	638	0.0	1500	1877	205	843	20.11	524	62.5	7.2	30.8	19.9	20.6
1-2 PM	2090	0.0	640	0.0	1499	1510	580	1220	26.05	676	62.5	6.6	30.8	19.9	18.1
2-3 PM	2122	0.0	651	0.0	1500	1519	603	1253	26.51	688	62.4	6.6	30.8	19.9	17.9
3-4 PM	2222	0.0	682	0.0	1500	1552	670	1352	27.96	728	62.2	6.5	30.8	19.6	17.3
4-5 PM	2273	0.0	697	0.0	1500	1529	744	1441	29.43	768	62.2	6.4	30.8	19.5	16.6
5-6 PM	2296	0.0	704	0.0	1500	1504	792	1496	30.41	794	62.1	6.3	30.8	19.4	16.3
6-7 PM	2009	0.0	616	0.0	1500	1335	674	1290	27.11	705	62.7	6.5	30.8	20.1	17.6
7-8 PM	1560	0.0	479	0.0	1500	1346	214	693	20.41	524	63.5	7.1	30.8	21.2	21.8
8-9 PM	1339	0.0	411	0.0	1499	1339	0	411	16.05	407	63.9	7.8	30.8	21.7	23.5
9-10 PM	878	0.0	269	0.0	1499	878	0	269	1.74	86	64.8	27.8	40.4	22.8	23.2
10-11 PM	664	0.0	204	0.0	1500	664	0	204	0.49	0	65.1	45.2	42.9	23.3	23.3
11PM-MID	308	0.0	95	0.0	1500	308	0	95	0.45	0	65.8	46.6	44.3	24.1	24.1

----- SITE BREAKDOWN DELAYS -----	
BREAKDOWN DURATION (MINS)	0
RANGE OF QUEUE DELAY - MIN	0.0
(VEH-H) MAX	0.0
RANGE OF DIVN DELAY - MIN	0.0
(VEH-H) MAX	0.0
AV BREAKDOWNS PER DAY	0.00
AV QUEUE DELAY/DAY (VEH-H)	0.0
AV DIVN DELAY/DAY (VEH-H)	0.0
AV TOTAL DELAY/DAY (VEH-H)	0.0

----- SITE ACCIDENT DELAYS -----	
ACCIDENT DURATION (MINS)	0
RANGE OF QUEUE DELAY - MIN	0.0
(VEH-H) MAX	0.0
RANGE OF DIVN DELAY - MIN	0.0
(VEH-H) MAX	0.0
AV ACCIDENTS PER DAY	0.00
AV QUEUE DELAY/DAY (VEH-H)	0.0
AV DIVN DELAY/DAY (VEH-H)	0.0
AV TOTAL DELAY/DAY (VEH-H)	0.0

AVERAGE ACCIDENT NUMBERS (PIA/DAY)	
MAIN ROUTE WITHOUT WORKS	0.0053
MAIN ROUTE WITH WORKS	0.0029
DIVERSION	0.1036

PIA: Personal Injury Accidents

IMPACTS ON ROAD USERS	
ROAD USER COSTS PER DAY (DOLLARS)	\$148,570
CONGESTED HOURS PER DAY*	9

*Delays Exceeding 15 Minutes

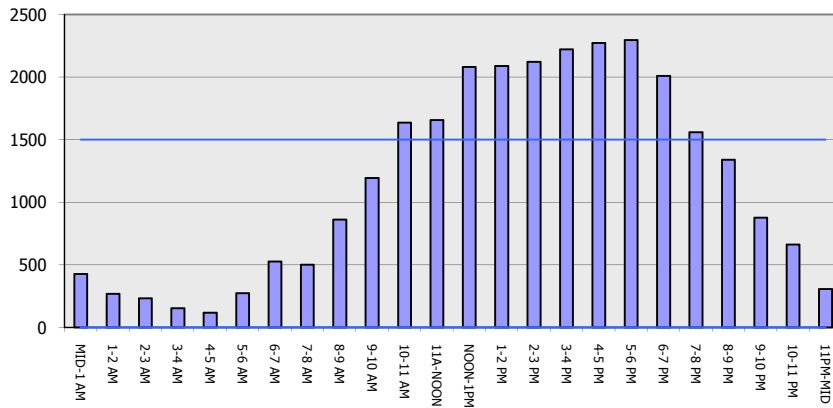
**STH 441: USH 41 TO RACINE ST (WINNEBAGO COUNTY)
 CONTINUOUS (24 HOUR) CLOSURE
 DIVERSION ROUTE: PROSPECT AVENUE - STH 47**

MAY
 Analyzed for 2009
 Construction Season

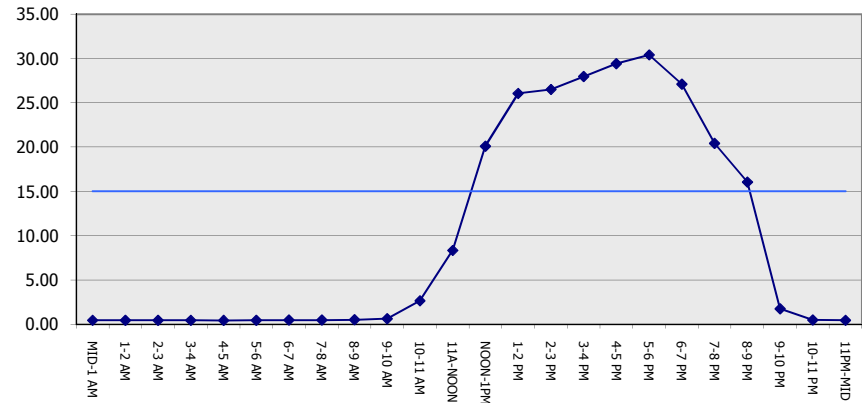
GRAPHICAL REPRESENTATION OF TRAFFIC MODEL INPUT AND OUTPUT

SUNDAY EASTBOUND DIRECTION

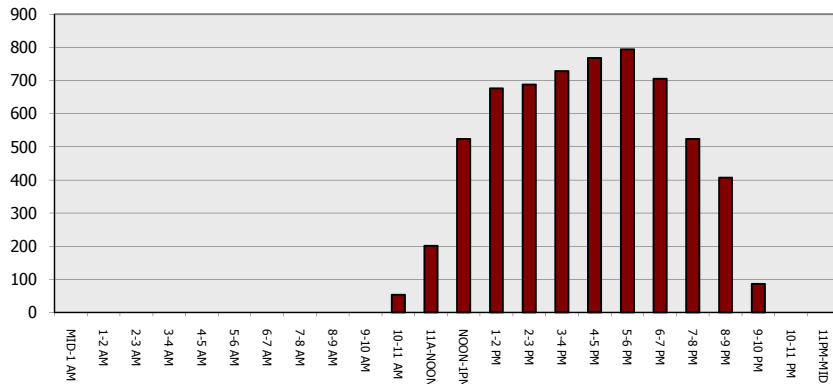
Main Route - Traffic Demand (Vehicles Per Hour)



Main Route Average Delay Per Vehicle (Minutes)



Main Route - Average Queue Length (Vehicles)



Main Route - Average Speed (MPH)

