

STH 441: USH 41 TO RACINE ST (WINNEBAGO COUNTY) CONTINUOUS (24 HOUR) CLOSURE DIVERSION ROUTE: PROSPECT AVENUE - STH 47	MAY
	Analyzed for 2009 Construction Season

SUMMARY OF TRAFFIC MODEL OUTPUT

MON-THUR WESTBOUND DIRECTION

TIME OF DAY	FLOWS AND CAPACITY IN VEH/HR								AVERAGE SPEEDS IN MPH						
	MAIN ROUTE		ALTERNATE ROUTE		SITE CAPA CITY	FLOW MAIN ROUTE	FLOW DIVER -TING	TOTAL DIVN FLOW	AV.DEL PER VEH (MINS)	AVERAGE QUEUE (VEH)	MAIN ROUTE		ALTERNATE ROUTE		
	DEMAND FLOW	PCT HEAVY	NORMAL FLOW	PCT HEAVY							WITHOUT WORK ZN	WITH WORK ZN	SITE	WITHOUT WORK ZN	WITH WORK ZN
MID-1 AM	152	0.0	46	0.0	1500	152	0	46	0.44	0	66.1	47.1	44.9	24.5	24.5
1-2 AM	96	0.0	30	0.0	1500	96	0	30	0.43	0	66.2	47.4	45.1	24.6	24.6
2-3 AM	97	0.0	30	0.0	1500	97	0	30	0.43	0	66.2	47.4	45.1	24.6	24.6
3-4 AM	162	0.0	49	0.0	1500	162	0	49	0.44	0	66.1	47.1	44.8	24.5	24.5
4-5 AM	438	0.0	135	0.0	1500	438	0	135	0.46	0	65.6	46.0	43.7	23.8	23.8
5-6 AM	1360	0.0	417	0.0	1499	1360	0	417	1.10	17	63.8	32.5	36.1	21.6	21.7
6-7 AM	2655	0.0	814	0.0	1500	2383	271	1085	18.13	521	59.3	7.8	30.8	18.6	18.9
7-8 AM	3717	0.0	1140	0.0	1500	1500	2217	3356+	35.71	968	48.4	6.0	30.8	16.1	14.3
8-9 AM	2258	0.0	692	0.0	1500	1245	1013	1704+	32.48	851	62.2	6.2	30.8	19.6	15.6
9-10 AM	1681	0.0	516	0.0	1499	1307	375	890	22.29	575	63.3	7.0	30.8	20.9	20.4
10-11 AM	1672	0.0	513	0.0	1500	1518	154	667	20.12	515	63.3	7.1	30.8	20.9	22.0
11A-NOON	1762	0.0	540	0.0	1500	1534	228	768	21.01	539	63.1	7.1	30.8	20.7	21.2
NOON-1PM	1918	0.0	588	0.0	1500	1556	362	949	22.79	588	62.8	6.9	30.8	20.3	20.0
1-2 PM	2016	0.0	618	0.0	1499	1541	475	1093	24.41	632	62.7	6.7	30.8	20.1	19.0
2-3 PM	2163	0.0	663	0.0	1500	1576	587	1250	26.46	687	62.3	6.6	30.8	19.7	17.9
3-4 PM	2444	0.0	749	0.0	1500	1670	774	1524	30.94	810	61.5	6.3	30.8	19.1	16.1
4-5 PM	2772	0.0	850	0.0	1499	1526	1245	2096+	34.94	924	58.1	6.1	30.8	18.3	14.7
5-6 PM	2589	0.0	794	0.0	1499	1476	1113	1907+	34.77	916	60.0	6.1	30.8	18.8	14.8
6-7 PM	1781	0.0	546	0.0	1499	1107	674	1219	26.44	690	63.1	6.6	30.8	20.7	18.2
7-8 PM	1211	0.0	371	0.0	1499	1196	15	386	14.64	376	64.1	8.1	31.2	22.0	23.5
8-9 PM	998	0.0	306	0.0	1500	998	0	306	1.27	45	64.5	31.4	40.2	22.5	22.7
9-10 PM	845	0.0	259	0.0	1500	845	0	259	0.50	0	64.8	44.6	42.2	22.9	22.9
10-11 PM	558	0.0	171	0.0	1500	558	0	171	0.48	0	65.3	45.6	43.3	23.5	23.5
11PM-MID	328	0.0	100	0.0	1500	328	0	100	0.45	0	65.8	46.5	44.2	24.1	24.1

+ INDICATES DIVERSION FLOW EXCEEDS USER-SPECIFIED WARNING LIMIT

----- SITE BREAKDOWN DELAYS -----	
BREAKDOWN DURATION (MINS)	0
RANGE OF QUEUE DELAY - MIN (VEH-H) MAX	0.0
RANGE OF DIVN DELAY - MIN (VEH-H) MAX	0.0
AV BREAKDOWNS PER DAY	0.00
AV QUEUE DELAY/DAY (VEH-H)	0.0
AV DIVN DELAY/DAY (VEH-H)	0.0
AV TOTAL DELAY/DAY (VEH-H)	0.0

----- SITE ACCIDENT DELAYS -----	
ACCIDENT DURATION (MINS)	0
RANGE OF QUEUE DELAY - MIN (VEH-H) MAX	0.0
RANGE OF DIVN DELAY - MIN (VEH-H) MAX	0.0
AV ACCIDENTS PER DAY	0.00
AV QUEUE DELAY/DAY (VEH-H)	0.0
AV DIVN DELAY/DAY (VEH-H)	0.0
AV TOTAL DELAY/DAY (VEH-H)	0.0

AVERAGE ACCIDENT NUMBERS (PIA/DAY)	
MAIN ROUTE WITHOUT WORKS	0.0068
MAIN ROUTE WITH WORKS	0.0033
DIVERSION	0.1632

PIA: Personal Injury Accidents

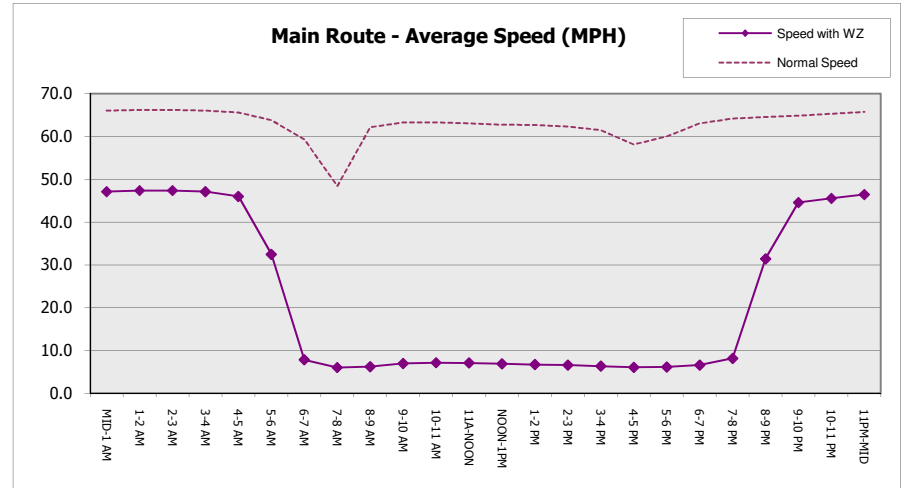
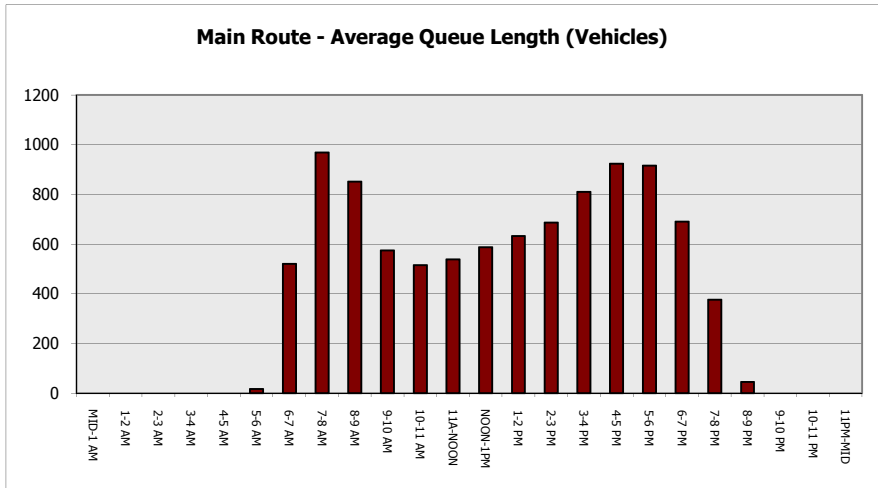
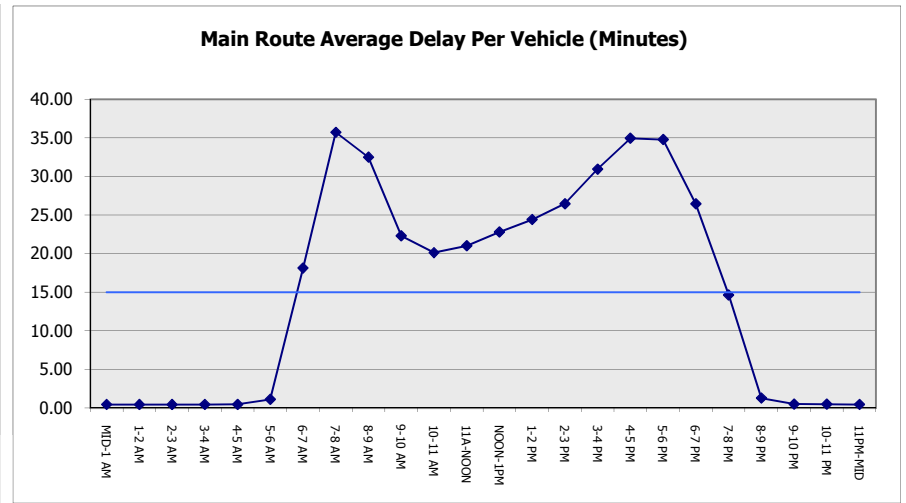
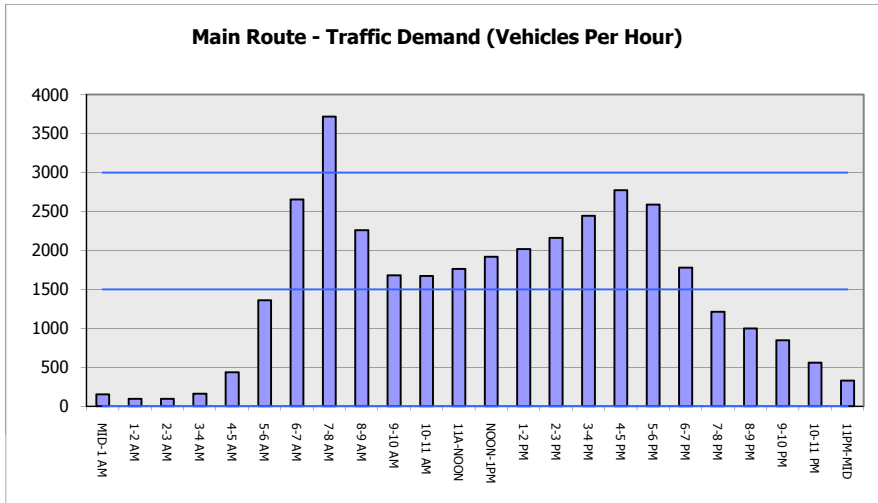
IMPACTS ON ROAD USERS	
ROAD USER COSTS PER DAY (DOLLARS)	\$215,611
CONGESTED HOURS PER DAY*	13

*Delays Exceeding 15 Minutes

**STH 441: USH 41 TO RACINE ST (WINNEBAGO COUNTY)
 CONTINUOUS (24 HOUR) CLOSURE
 DIVERSION ROUTE: PROSPECT AVENUE - STH 47**

MAY
 Analyzed for 2009
 Construction Season

GRAPHICAL REPRESENTATION OF TRAFFIC MODEL INPUT AND OUTPUT
MON-THUR WESTBOUND DIRECTION



**STH 441: USH 41 TO RACINE ST (WINNEBAGO COUNTY)
CONTINUOUS (24 HOUR) CLOSURE
DIVERSION ROUTE: PROSPECT AVENUE - STH 47**

MAY
Analyzed for 2009
Construction Season

SUMMARY OF TRAFFIC MODEL OUTPUT
MON-THUR EASTBOUND DIRECTION

TIME OF DAY	FLOWS AND CAPACITY IN VEH/HR							TOTAL DIVN FLOW	AV.DEL PER VEH (MINS)	AVERAGE QUEUE (VEH)	AVERAGE SPEEDS IN MPH				
	MAIN		DIVERSION		SITE CAPA CITY	FLOW MAIN ROUTE	FLOW DIVER -TING				MAIN ROUTE		SITE	ALTERNATE ROUTE	
	DEMAND FLOW	PCT HEAVY	NORMAL FLOW	PCT HEAVY							WITHOUT WORK ZN	WITH WORK ZN		WITHOUT WORK ZN	WITH WORK ZN
MID-1 AM	278	0.0	86	0.0	1500	278	0	86	0.45	0	65.9	46.6	44.3	24.2	24.2
1-2 AM	177	0.0	55	0.0	1500	177	0	55	0.44	0	66.1	47.1	44.8	24.4	24.4
2-3 AM	141	0.0	43	0.0	1500	141	0	43	0.44	0	66.1	47.2	44.9	24.5	24.5
3-4 AM	100	0.0	31	0.0	1500	100	0	31	0.43	0	66.2	47.4	45.1	24.6	24.6
4-5 AM	206	0.0	63	0.0	1500	206	0	63	0.44	0	66.0	46.9	44.6	24.3	24.3
5-6 AM	755	0.0	232	0.0	1500	755	0	232	0.50	0	65.0	44.9	42.5	23.0	23.0
6-7 AM	2101	0.0	644	0.0	1499	2101	0	644	7.19	223	62.5	12.1	30.8	19.9	20.9
7-8 AM	3214	0.0	985	0.0	1499	1900	1314	2299+	33.86	906	53.6	6.1	31.5	17.3	15.0
8-9 AM	2302	0.0	706	0.0	1499	1240	1062	1768+	32.88	862	62.1	6.2	30.8	19.4	15.5
9-10 AM	1837	0.0	563	0.0	1499	1318	520	1083	24.39	632	63.0	6.8	30.8	20.5	19.1
10-11 AM	1871	0.0	573	0.0	1500	1534	337	911	22.38	576	62.9	6.9	30.8	20.4	20.2
11A-NOON	2094	0.0	641	0.0	1500	1596	498	1139	24.99	648	62.5	6.7	30.8	19.9	18.7
NOON-1PM	2214	0.0	679	0.0	1499	1559	655	1334	27.70	721	62.3	6.5	30.8	19.6	17.4
1-2 PM	2299	0.0	704	0.0	1499	1577	722	1426	29.18	761	62.1	6.4	30.8	19.4	16.7
2-3 PM	3144	0.0	964	0.0	1500	1614	1531	2494+	35.22	940	54.3	6.1	30.8	17.5	14.7
3-4 PM	3790	0.0	1162	0.0	1500	1500	2290	3452+	35.63	968	47.7	6.0	30.8	15.9	14.3
4-5 PM	4553	0.0	1396	0.0	1500	1500	3053	4449+	34.62	968	39.9	6.0	30.8	14.2	14.3
5-6 PM	3992	0.0	1224	0.0	1500	1500	2492	3716+	35.40	968	45.6	6.0	30.8	15.5	14.3
6-7 PM	2544	0.0	780	0.0	1500	1391	1153	1933+	34.48	907	60.4	6.1	30.8	18.9	14.9
7-8 PM	1743	0.0	534	0.0	1500	1177	567	1101	24.81	645	63.2	6.7	30.8	20.7	19.0
8-9 PM	1484	0.0	455	0.0	1500	1430	53	508	18.74	478	63.6	7.3	30.8	21.4	23.0
9-10 PM	1195	0.0	367	0.0	1499	1195	0	367	11.71	302	64.1	9.0	31.9	22.0	23.3
10-11 PM	974	0.0	299	0.0	1500	974	0	299	0.86	19	64.6	36.8	41.3	22.5	22.6
11PM-MID	570	0.0	175	0.0	1500	570	0	175	0.48	0	65.3	45.6	43.2	23.5	23.5

+ INDICATES DIVERSION FLOW EXCEEDS USER-SPECIFIED WARNING LIMIT

----- SITE BREAKDOWN DELAYS -----	
BREAKDOWN DURATION (MINS)	0
RANGE OF QUEUE DELAY - MIN	0.0
(VEH-H) MAX	0.0
RANGE OF DIVN DELAY - MIN	0.0
(VEH-H) MAX	0.0
AV BREAKDOWNS PER DAY	0.00
AV QUEUE DELAY/DAY (VEH-H)	0.0
AV DIVN DELAY/DAY (VEH-H)	0.0
AV TOTAL DELAY/DAY (VEH-H)	0.0

----- SITE ACCIDENT DELAYS -----	
ACCIDENT DURATION (MINS)	0
RANGE OF QUEUE DELAY - MIN	0.0
(VEH-H) MAX	0.0
RANGE OF DIVN DELAY - MIN	0.0
(VEH-H) MAX	0.0
AV ACCIDENTS PER DAY	0.00
AV QUEUE DELAY/DAY (VEH-H)	0.0
AV DIVN DELAY/DAY (VEH-H)	0.0
AV TOTAL DELAY/DAY (VEH-H)	0.0

AVERAGE ACCIDENT NUMBERS (PIA/DAY)	
MAIN ROUTE WITHOUT WORKS	0.0083
MAIN ROUTE WITH WORKS	0.0034
DIVERSION	0.2364

PIA: Personal Injury Accidents

IMPACTS ON ROAD USERS	
ROAD USER COSTS PER DAY (DOLLARS)	\$303,145
CONGESTED HOURS PER DAY*	14

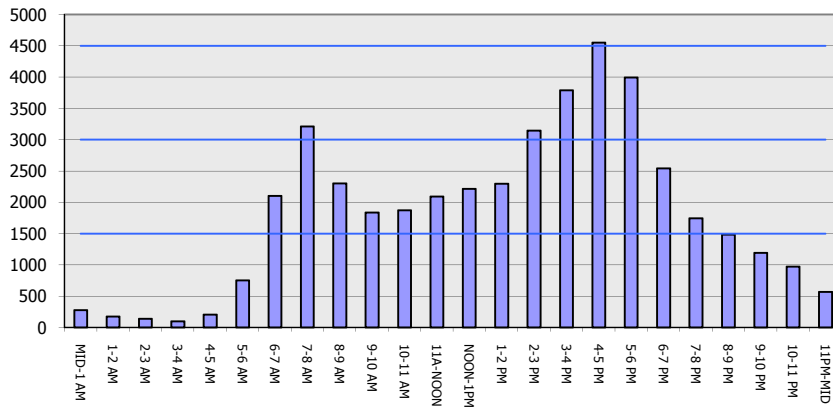
*Delays Exceeding 15 Minutes

**STH 441: USH 41 TO RACINE ST (WINNEBAGO COUNTY)
 CONTINUOUS (24 HOUR) CLOSURE
 DIVERSION ROUTE: PROSPECT AVENUE - STH 47**

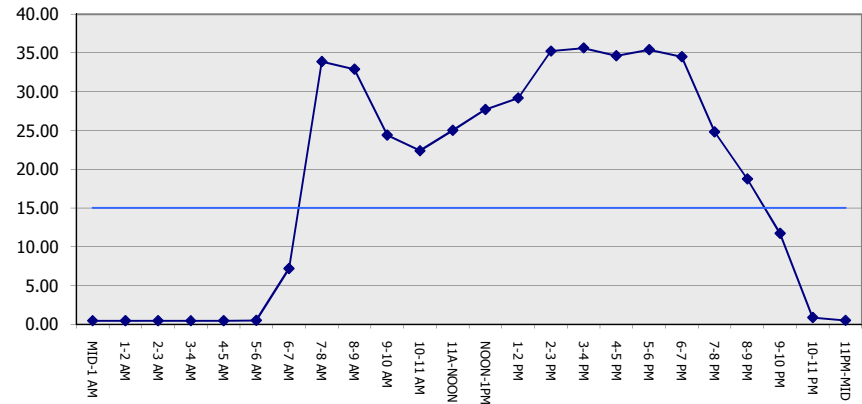
MAY
 Analyzed for 2009
 Construction Season

GRAPHICAL REPRESENTATION OF TRAFFIC MODEL INPUT AND OUTPUT
MON-THUR EASTBOUND DIRECTION

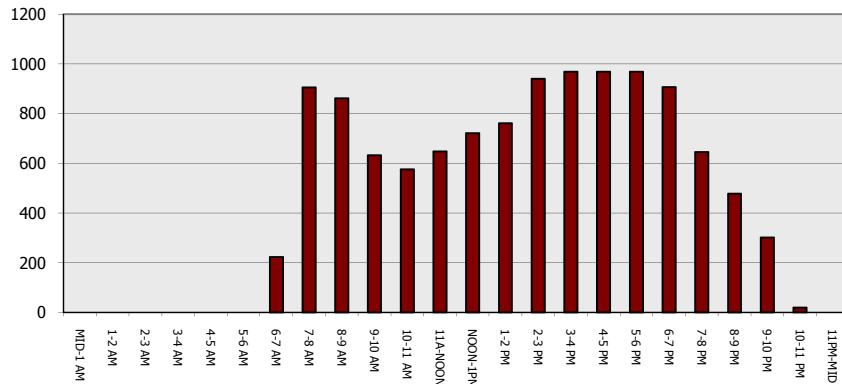
Main Route - Traffic Demand (Vehicles Per Hour)



Main Route Average Delay Per Vehicle (Minutes)



Main Route - Average Queue Length (Vehicles)



Main Route - Average Speed (MPH)

