

USH 10: USH 45 TO CTH CB (WINNEBAGO COUNTY) CONTINUOUS (24 HOUR) CLOSURE DIVERSION ROUTE: CTH CB - CTH II	OCTOBER
	Analyzed for 2009 Construction Season

SUMMARY OF TRAFFIC MODEL OUTPUT

MON-THUR WESTBOUND DIRECTION

TIME OF DAY	FLOWS AND CAPACITY IN VEH/HR								AVERAGE SPEEDS IN MPH						
	MAIN ROUTE		ALTERNATE ROUTE		SITE CAPA CITY	FLOW MAIN ROUTE	FLOW DIVER -TING	TOTAL DIVN FLOW	AV.DEL PER VEH (MINS)	AVERAGE QUEUE (VEH)	MAIN ROUTE		ALTERNATE ROUTE		
	DEMAND FLOW	PCT HEAVY	NORMAL FLOW	PCT HEAVY							WITHOUT WORK ZN	WITH WORK ZN	SITE	WITHOUT WORK ZN	WITH WORK ZN
MID-1 AM	36	0.0	19	0.0	1500	36	0	19	0.43	0	66.3	63.5	45.3	34.6	34.6
1-2 AM	24	0.0	13	0.0	1500	24	0	13	0.42	0	66.3	63.5	45.4	34.7	34.7
2-3 AM	30	0.0	16	0.0	1500	30	0	16	0.43	0	66.3	63.5	45.4	34.6	34.6
3-4 AM	38	0.0	21	0.0	1500	38	0	21	0.43	0	66.3	63.5	45.3	34.5	34.5
4-5 AM	62	0.0	33	0.0	1500	62	0	33	0.43	0	66.3	63.4	45.3	34.4	34.4
5-6 AM	171	0.0	92	0.0	1500	171	0	92	0.44	0	66.1	63.2	44.8	33.8	33.8
6-7 AM	361	0.0	194	0.0	1500	361	0	194	0.46	0	65.7	62.7	44.0	32.7	32.7
7-8 AM	439	0.0	236	0.0	1500	439	0	236	0.47	0	65.6	62.5	43.7	32.2	32.2
8-9 AM	357	0.0	192	0.0	1500	357	0	192	0.46	0	65.7	62.7	44.0	32.7	32.7
9-10 AM	327	0.0	175	0.0	1500	327	0	175	0.45	0	65.8	62.8	44.2	32.9	32.9
10-11 AM	312	0.0	168	0.0	1500	312	0	168	0.45	0	65.8	62.8	44.2	32.9	32.9
11A-NOON	326	0.0	175	0.0	1500	326	0	175	0.45	0	65.8	62.8	44.2	32.9	32.9
NOON-1PM	347	0.0	186	0.0	1500	347	0	186	0.46	0	65.8	62.7	44.1	32.7	32.7
1-2 PM	392	0.0	210	0.0	1500	392	0	210	0.46	0	65.6	62.7	43.9	32.5	32.5
2-3 PM	519	0.0	279	0.0	1500	519	0	279	0.47	0	65.4	62.3	43.4	31.7	31.7
3-4 PM	677	0.0	364	0.0	1500	677	0	364	0.49	0	65.1	62.0	42.8	30.8	30.8
4-5 PM	788	0.0	423	0.0	1500	788	0	423	0.50	0	64.9	61.7	42.4	30.1	30.1
5-6 PM	671	0.0	360	0.0	1500	671	0	360	0.49	0	65.1	62.0	42.8	30.8	30.8
6-7 PM	371	0.0	200	0.0	1500	371	0	200	0.46	0	65.7	62.7	44.0	32.6	32.6
7-8 PM	260	0.0	140	0.0	1500	260	0	140	0.45	0	65.9	63.0	44.5	33.2	33.2
8-9 PM	221	0.0	118	0.0	1500	221	0	118	0.44	0	66.0	63.0	44.6	33.5	33.5
9-10 PM	182	0.0	98	0.0	1500	182	0	98	0.44	0	66.1	63.2	44.8	33.7	33.7
10-11 PM	113	0.0	61	0.0	1500	113	0	61	0.43	0	66.2	63.3	45.0	34.1	34.1
11PM-MID	68	0.0	36	0.0	1500	68	0	36	0.43	0	66.3	63.4	45.2	34.4	34.4

----- SITE BREAKDOWN DELAYS -----	
BREAKDOWN DURATION (MINS)	0
RANGE OF QUEUE DELAY - MIN	0.0
(VEH-H) MAX	0.0
RANGE OF DIVN DELAY - MIN	0.0
(VEH-H) MAX	0.0
AV BREAKDOWNS PER DAY	0.00
AV QUEUE DELAY/DAY (VEH-H)	0.0
AV DIVN DELAY/DAY (VEH-H)	0.0
AV TOTAL DELAY/DAY (VEH-H)	0.0

----- SITE ACCIDENT DELAYS -----	
ACCIDENT DURATION (MINS)	0
RANGE OF QUEUE DELAY - MIN	0.0
(VEH-H) MAX	0.0
RANGE OF DIVN DELAY - MIN	0.0
(VEH-H) MAX	0.0
AV ACCIDENTS PER DAY	0.00
AV QUEUE DELAY/DAY (VEH-H)	0.0
AV DIVN DELAY/DAY (VEH-H)	0.0
AV TOTAL DELAY/DAY (VEH-H)	0.0

AVERAGE ACCIDENT NUMBERS (PIA/DAY)	
MAIN ROUTE WITHOUT WORKS	0.0119
MAIN ROUTE WITH WORKS	0.0114
DIVERSION	0.0523

PIA: Personal Injury Accidents

IMPACTS ON ROAD USERS	
ROAD USER COSTS PER DAY (DOLLARS)	\$647
CONGESTED HOURS PER DAY*	0

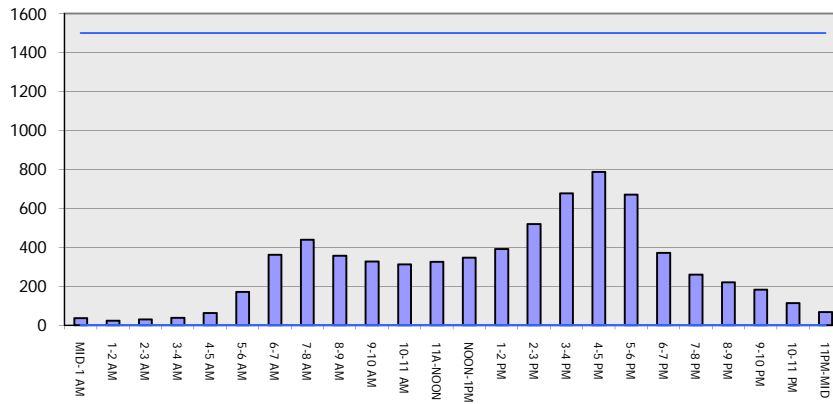
*Delays Exceeding 15 Minutes

**USH 10: USH 45 TO CTH CB (WINNEBAGO COUNTY)
 CONTINUOUS (24 HOUR) CLOSURE
 DIVERSION ROUTE: CTH CB - CTH II**

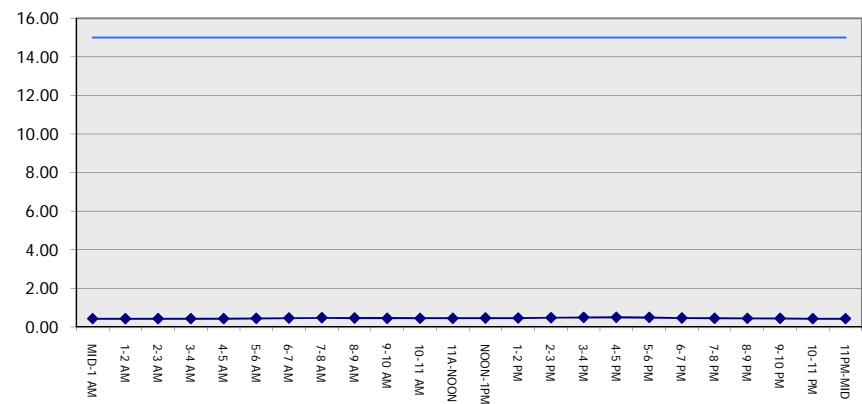
OCTOBER
 Analyzed for 2009
 Construction Season

GRAPHICAL REPRESENTATION OF TRAFFIC MODEL INPUT AND OUTPUT
MON-THUR WESTBOUND DIRECTION

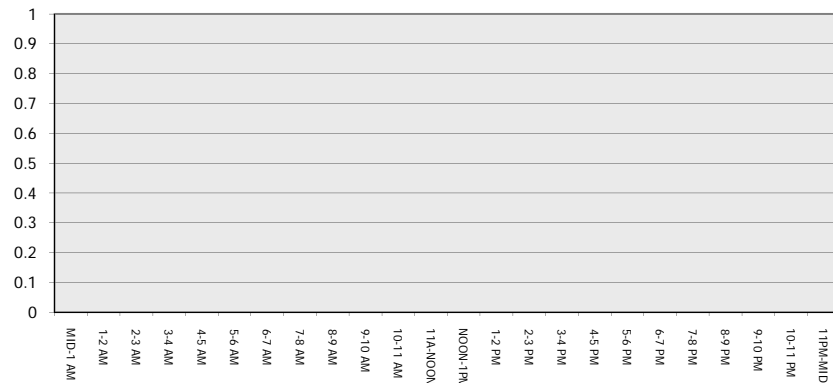
Main Route - Traffic Demand (Vehicles Per Hour)



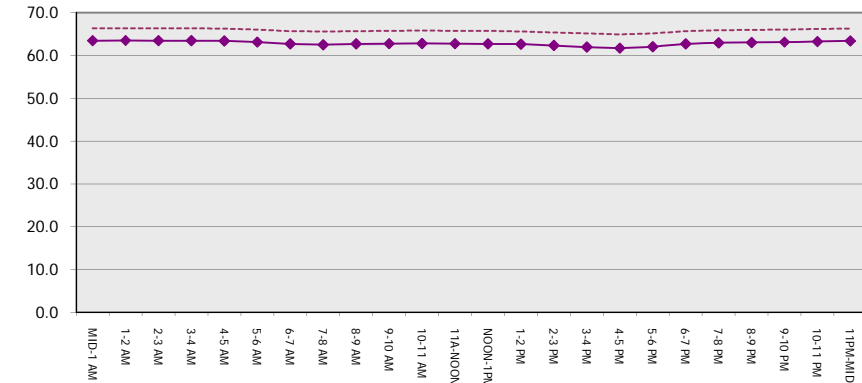
Main Route Average Delay Per Vehicle (Minutes)



Main Route - Average Queue Length (Vehicles)



Main Route - Average Speed (MPH)



USH 10: USH 45 TO CTH CB (WINNEBAGO COUNTY) CONTINUOUS (24 HOUR) CLOSURE DIVERSION ROUTE: CTH CB - CTH II	OCTOBER
	Analyzed for 2009 Construction Season

SUMMARY OF TRAFFIC MODEL OUTPUT

MON-THUR EASTBOUND DIRECTION

TIME OF DAY	FLOWS AND CAPACITY IN VEH/HR								AVERAGE SPEEDS IN MPH						
	MAIN		DIVERSION		SITE CAPA CITY	FLOW MAIN ROUTE	FLOW DIVER -TING	TOTAL DIVN FLOW	AV.DEL PER VEH (MINS)	AVERAGE QUEUE (VEH)	MAIN ROUTE		SITE	ALTERNATE ROUTE	
	DEMAND FLOW	PCT HEAVY	NORMAL FLOW	PCT HEAVY							WITHOUT WORK ZN	WITH WORK ZN		WITHOUT WORK ZN	WITH WORK ZN
MID-1 AM	21	0.0	11	0.0	1500	21	0	11	0.42	0	66.3	63.5	45.4	34.7	34.7
1-2 AM	18	0.0	9	0.0	1500	18	0	9	0.42	0	66.3	63.5	45.5	34.7	34.7
2-3 AM	18	0.0	10	0.0	1500	18	0	10	0.42	0	66.3	63.5	45.5	34.7	34.7
3-4 AM	32	0.0	18	0.0	1500	32	0	18	0.43	0	66.3	63.5	45.4	34.6	34.6
4-5 AM	108	0.0	58	0.0	1500	108	0	58	0.43	0	66.2	63.3	45.1	34.2	34.2
5-6 AM	382	0.0	206	0.0	1500	382	0	206	0.46	0	65.7	62.7	44.0	32.5	32.5
6-7 AM	633	0.0	340	0.0	1500	633	0	340	0.48	0	65.2	62.1	43.0	31.1	31.1
7-8 AM	788	0.0	423	0.0	1500	788	0	423	0.50	0	64.9	61.7	42.4	30.1	30.1
8-9 AM	478	0.0	256	0.0	1500	478	0	256	0.47	0	65.5	62.5	43.6	32.0	32.0
9-10 AM	395	0.0	212	0.0	1500	395	0	212	0.46	0	65.6	62.7	43.9	32.5	32.5
10-11 AM	381	0.0	205	0.0	1500	381	0	205	0.46	0	65.7	62.7	44.0	32.5	32.5
11A-NOON	349	0.0	187	0.0	1500	349	0	187	0.46	0	65.8	62.7	44.1	32.7	32.7
NOON-1PM	364	0.0	196	0.0	1500	364	0	196	0.46	0	65.7	62.7	44.0	32.6	32.6
1-2 PM	388	0.0	208	0.0	1500	388	0	208	0.46	0	65.6	62.7	44.0	32.5	32.5
2-3 PM	403	0.0	216	0.0	1500	403	0	216	0.46	0	65.6	62.6	43.9	32.4	32.4
3-4 PM	445	0.0	239	0.0	1500	445	0	239	0.47	0	65.6	62.5	43.7	32.2	32.2
4-5 PM	493	0.0	265	0.0	1500	493	0	265	0.47	0	65.5	62.4	43.5	31.9	31.9
5-6 PM	417	0.0	223	0.0	1500	417	0	223	0.46	0	65.6	62.6	43.8	32.4	32.4
6-7 PM	279	0.0	149	0.0	1500	279	0	149	0.45	0	65.9	62.9	44.3	33.2	33.2
7-8 PM	220	0.0	118	0.0	1500	220	0	118	0.44	0	66.0	63.0	44.6	33.5	33.5
8-9 PM	145	0.0	78	0.0	1500	145	0	78	0.44	0	66.1	63.2	44.9	33.9	33.9
9-10 PM	120	0.0	64	0.0	1500	120	0	64	0.43	0	66.1	63.3	45.0	34.1	34.1
10-11 PM	83	0.0	45	0.0	1500	83	0	45	0.43	0	66.3	63.3	45.1	34.3	34.3
11PM-MID	59	0.0	31	0.0	1500	59	0	31	0.43	0	66.3	63.4	45.3	34.5	34.5

----- SITE BREAKDOWN DELAYS -----	
BREAKDOWN DURATION (MINS)	0
RANGE OF QUEUE DELAY - MIN	0.0
(VEH-H) MAX	0.0
RANGE OF DIVN DELAY - MIN	0.0
(VEH-H) MAX	0.0
AV BREAKDOWNS PER DAY	0.00
AV QUEUE DELAY/DAY (VEH-H)	0.0
AV DIVN DELAY/DAY (VEH-H)	0.0
AV TOTAL DELAY/DAY (VEH-H)	0.0

----- SITE ACCIDENT DELAYS -----	
ACCIDENT DURATION (MINS)	0
RANGE OF QUEUE DELAY - MIN	0.0
(VEH-H) MAX	0.0
RANGE OF DIVN DELAY - MIN	0.0
(VEH-H) MAX	0.0
AV ACCIDENTS PER DAY	0.00
AV QUEUE DELAY/DAY (VEH-H)	0.0
AV DIVN DELAY/DAY (VEH-H)	0.0
AV TOTAL DELAY/DAY (VEH-H)	0.0

AVERAGE ACCIDENT NUMBERS (PIA/DAY)	
MAIN ROUTE WITHOUT WORKS	0.0117
MAIN ROUTE WITH WORKS	0.0113
DIVERSION	0.0518

PIA: Personal Injury Accidents

IMPACTS ON ROAD USERS	
ROAD USER COSTS PER DAY (DOLLARS)	\$638
CONGESTED HOURS PER DAY*	0

*Delays Exceeding 15 Minutes

**USH 10: USH 45 TO CTH CB (WINNEBAGO COUNTY)
 CONTINUOUS (24 HOUR) CLOSURE
 DIVERSION ROUTE: CTH CB - CTH II**

OCTOBER
 Analyzed for 2009
 Construction Season

GRAPHICAL REPRESENTATION OF TRAFFIC MODEL INPUT AND OUTPUT
MON-THUR EASTBOUND DIRECTION

