

USH 10: USH 45 TO CTH CB (WINNEBAGO COUNTY) CONTINUOUS (24 HOUR) CLOSURE DIVERSION ROUTE: CTH CB - CTH II	AUGUST
	Analyzed for 2009 Construction Season

SUMMARY OF TRAFFIC MODEL OUTPUT

SATURDAY WESTBOUND DIRECTION

TIME OF DAY	FLOWS AND CAPACITY IN VEH/HR						AVERAGE SPEEDS IN MPH								
	MAIN ROUTE		ALTERNATE ROUTE		SITE CAPA CITY	FLOW MAIN ROUTE	FLOW DIVER -TING	TOTAL DIVN FLOW	AV.DEL PER VEH (MINS)	AVERAGE QUEUE (VEH)	MAIN ROUTE		ALTERNATE ROUTE		
	DEMAND FLOW	PCT HEAVY	NORMAL FLOW	PCT HEAVY							WITHOUT WORK ZN	WITH WORK ZN	SITE	WITHOUT WORK ZN	WITH WORK ZN
MID-1 AM	111	0.0	60	0.0	1500	111	0	60	0.43	0	66.2	63.3	45.0	34.1	34.1
1-2 AM	59	0.0	32	0.0	1500	59	0	32	0.43	0	66.3	63.4	45.3	34.4	34.4
2-3 AM	46	0.0	25	0.0	1500	46	0	25	0.43	0	66.3	63.5	45.3	34.5	34.5
3-4 AM	46	0.0	25	0.0	1500	46	0	25	0.43	0	66.3	63.5	45.3	34.5	34.5
4-5 AM	50	0.0	27	0.0	1500	50	0	27	0.43	0	66.3	63.5	45.3	34.5	34.5
5-6 AM	133	0.0	72	0.0	1500	133	0	72	0.44	0	66.1	63.2	45.0	34.0	34.0
6-7 AM	231	0.0	125	0.0	1500	231	0	125	0.44	0	66.0	63.0	44.6	33.4	33.4
7-8 AM	363	0.0	196	0.0	1500	363	0	196	0.46	0	65.7	62.7	44.0	32.6	32.6
8-9 AM	550	0.0	295	0.0	1500	550	0	295	0.48	0	65.4	62.3	43.3	31.5	31.5
9-10 AM	752	0.0	403	0.0	1500	752	0	403	0.50	0	65.0	61.9	42.5	30.4	30.4
10-11 AM	919	0.0	493	0.0	1500	919	0	493	0.51	0	64.6	61.4	42.0	29.4	29.4
11A-NOON	963	0.0	517	0.0	1500	963	0	517	0.52	0	64.6	61.4	41.8	29.1	29.1
NOON-1PM	893	0.0	479	0.0	1500	893	0	479	0.51	0	64.7	61.5	42.0	29.6	29.6
1-2 PM	774	0.0	416	0.0	1500	774	0	416	0.50	0	65.0	61.8	42.5	30.2	30.2
2-3 PM	694	0.0	373	0.0	1500	694	0	373	0.49	0	65.1	62.0	42.8	30.7	30.7
3-4 PM	618	0.0	331	0.0	1500	618	0	331	0.48	0	65.2	62.1	43.0	31.2	31.2
4-5 PM	564	0.0	303	0.0	1500	564	0	303	0.48	0	65.3	62.2	43.3	31.5	31.5
5-6 PM	511	0.0	275	0.0	1500	511	0	275	0.47	0	65.5	62.3	43.5	31.8	31.8
6-7 PM	477	0.0	255	0.0	1500	477	0	255	0.47	0	65.5	62.5	43.6	32.0	32.0
7-8 PM	400	0.0	215	0.0	1500	400	0	215	0.46	0	65.6	62.7	43.9	32.4	32.4
8-9 PM	344	0.0	184	0.0	1500	344	0	184	0.46	0	65.8	62.8	44.1	32.7	32.7
9-10 PM	276	0.0	148	0.0	1500	276	0	148	0.45	0	65.9	62.9	44.4	33.2	33.2
10-11 PM	205	0.0	110	0.0	1500	205	0	110	0.44	0	66.0	63.1	44.6	33.6	33.6
11PM-MID	153	0.0	82	0.0	1500	153	0	82	0.44	0	66.1	63.2	44.9	33.8	33.8

----- SITE BREAKDOWN DELAYS -----	
BREAKDOWN DURATION (MINS)	0
RANGE OF QUEUE DELAY - MIN	0.0
(VEH-H) MAX	0.0
RANGE OF DIVN DELAY - MIN	0.0
(VEH-H) MAX	0.0
AV BREAKDOWNS PER DAY	0.00
AV QUEUE DELAY/DAY (VEH-H)	0.0
AV DIVN DELAY/DAY (VEH-H)	0.0
AV TOTAL DELAY/DAY (VEH-H)	0.0

----- SITE ACCIDENT DELAYS -----	
ACCIDENT DURATION (MINS)	0
RANGE OF QUEUE DELAY - MIN	0.0
(VEH-H) MAX	0.0
RANGE OF DIVN DELAY - MIN	0.0
(VEH-H) MAX	0.0
AV ACCIDENTS PER DAY	0.00
AV QUEUE DELAY/DAY (VEH-H)	0.0
AV DIVN DELAY/DAY (VEH-H)	0.0
AV TOTAL DELAY/DAY (VEH-H)	0.0

AVERAGE ACCIDENT NUMBERS (PIA/DAY)	
MAIN ROUTE WITHOUT WORKS	0.0169
MAIN ROUTE WITH WORKS	0.0163
DIVERSION	0.0748

PIA: Personal Injury Accidents

IMPACTS ON ROAD USERS	
ROAD USER COSTS PER DAY (DOLLARS)	\$1,240
CONGESTED HOURS PER DAY*	0

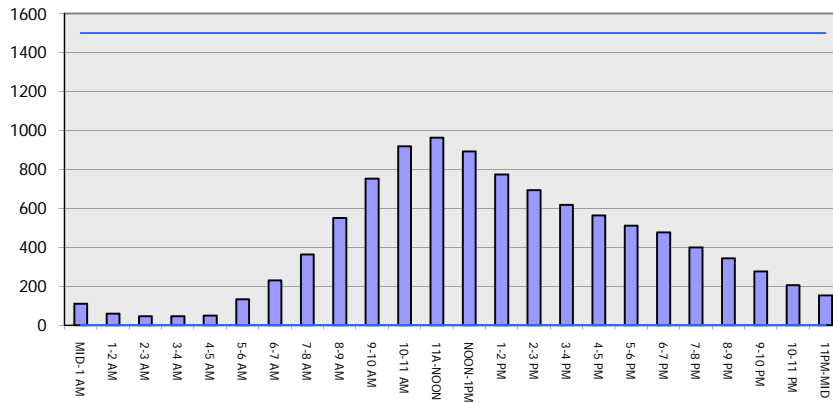
*Delays Exceeding 15 Minutes

USH 10: USH 45 TO CTH CB (WINNEBAGO COUNTY)
CONTINUOUS (24 HOUR) CLOSURE
DIVERSION ROUTE: CTH CB - CTH II

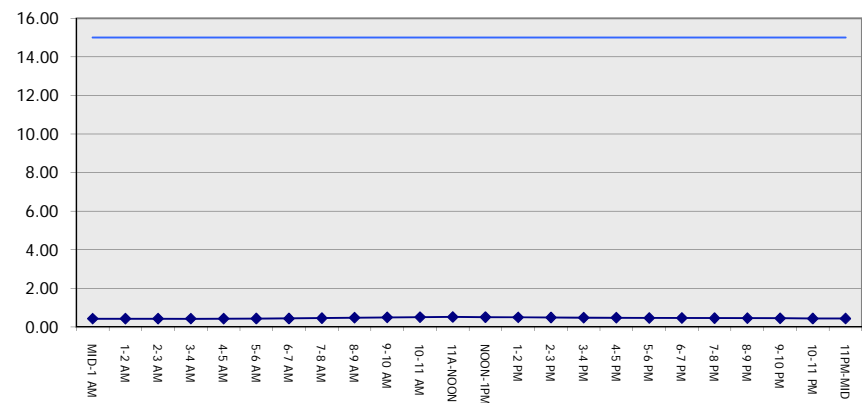
AUGUST
 Analyzed for 2009
 Construction Season

GRAPHICAL REPRESENTATION OF TRAFFIC MODEL INPUT AND OUTPUT
SATURDAY WESTBOUND DIRECTION

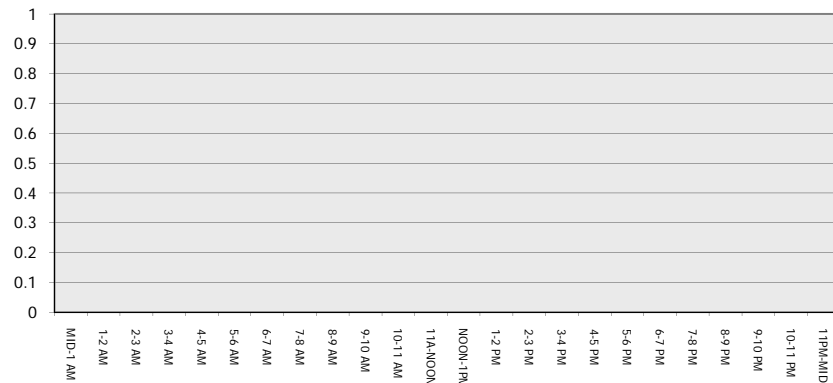
Main Route - Traffic Demand (Vehicles Per Hour)



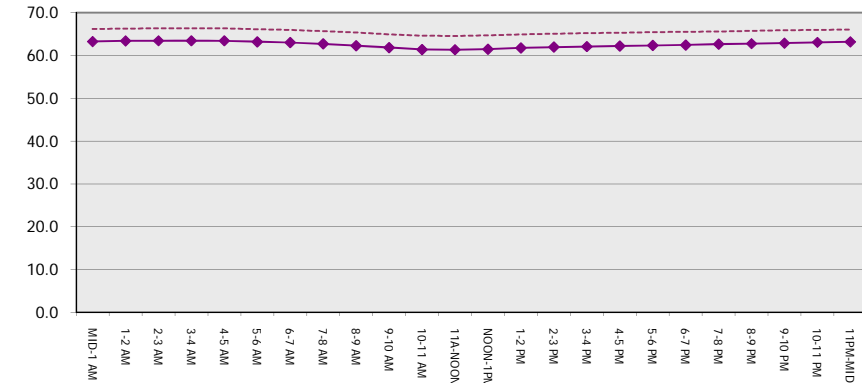
Main Route Average Delay Per Vehicle (Minutes)



Main Route - Average Queue Length (Vehicles)



Main Route - Average Speed (MPH)



USH 10: USH 45 TO CTH CB (WINNEBAGO COUNTY) CONTINUOUS (24 HOUR) CLOSURE DIVERSION ROUTE: CTH CB - CTH II	AUGUST
	Analyzed for 2009 Construction Season

SUMMARY OF TRAFFIC MODEL OUTPUT

SATURDAY EASTBOUND DIRECTION

TIME OF DAY	FLOWS AND CAPACITY IN VEH/HR								AVERAGE SPEEDS IN MPH						
	MAIN		DIVERSION		SITE CAPA CITY	FLOW MAIN ROUTE	FLOW DIVER -TING	TOTAL DIVN FLOW	AV.DEL PER VEH (MINS)	AVERAGE QUEUE (VEH)	MAIN ROUTE		SITE	ALTERNATE ROUTE	
	DEMAND FLOW	PCT HEAVY	NORMAL FLOW	PCT HEAVY							WITHOUT WORK ZN	WITH WORK ZN		WITHOUT WORK ZN	WITH WORK ZN
MID-1 AM	72	0.0	39	0.0	1500	72	0	39	0.43	0	66.3	63.4	45.2	34.3	34.3
1-2 AM	49	0.0	26	0.0	1500	49	0	26	0.43	0	66.3	63.5	45.3	34.5	34.5
2-3 AM	38	0.0	20	0.0	1500	38	0	20	0.43	0	66.3	63.5	45.3	34.6	34.6
3-4 AM	42	0.0	23	0.0	1500	42	0	23	0.43	0	66.3	63.5	45.3	34.5	34.5
4-5 AM	67	0.0	36	0.0	1500	67	0	36	0.43	0	66.3	63.4	45.2	34.4	34.4
5-6 AM	122	0.0	65	0.0	1500	122	0	65	0.43	0	66.1	63.3	45.0	34.1	34.1
6-7 AM	165	0.0	89	0.0	1500	165	0	89	0.44	0	66.1	63.2	44.8	33.8	33.8
7-8 AM	264	0.0	142	0.0	1500	264	0	142	0.45	0	65.9	63.0	44.4	33.2	33.2
8-9 AM	412	0.0	221	0.0	1500	412	0	221	0.46	0	65.6	62.6	43.8	32.4	32.4
9-10 AM	564	0.0	303	0.0	1500	564	0	303	0.48	0	65.3	62.2	43.3	31.5	31.5
10-11 AM	694	0.0	373	0.0	1500	694	0	373	0.49	0	65.1	62.0	42.8	30.7	30.7
11A-NOON	775	0.0	416	0.0	1500	775	0	416	0.50	0	65.0	61.8	42.5	30.2	30.2
NOON-1PM	757	0.0	407	0.0	1500	757	0	407	0.50	0	65.0	61.8	42.5	30.3	30.3
1-2 PM	712	0.0	383	0.0	1500	712	0	383	0.49	0	65.1	61.9	42.7	30.6	30.6
2-3 PM	650	0.0	349	0.0	1500	650	0	349	0.49	0	65.1	62.0	42.9	30.9	30.9
3-4 PM	637	0.0	342	0.0	1500	637	0	342	0.48	0	65.2	62.1	43.0	31.1	31.1
4-5 PM	630	0.0	339	0.0	1500	630	0	339	0.48	0	65.2	62.1	43.0	31.1	31.1
5-6 PM	583	0.0	313	0.0	1500	583	0	313	0.48	0	65.3	62.2	43.2	31.4	31.4
6-7 PM	507	0.0	273	0.0	1500	507	0	273	0.47	0	65.5	62.4	43.5	31.8	31.8
7-8 PM	450	0.0	242	0.0	1500	450	0	242	0.47	0	65.5	62.5	43.7	32.1	32.1
8-9 PM	451	0.0	242	0.0	1500	451	0	242	0.47	0	65.5	62.5	43.7	32.1	32.1
9-10 PM	347	0.0	186	0.0	1500	347	0	186	0.46	0	65.8	62.7	44.1	32.7	32.7
10-11 PM	259	0.0	139	0.0	1500	259	0	139	0.45	0	65.9	63.0	44.5	33.2	33.2
11PM-MID	146	0.0	78	0.0	1500	146	0	78	0.44	0	66.1	63.2	44.9	33.9	33.9

----- SITE BREAKDOWN DELAYS -----	
BREAKDOWN DURATION (MINS)	0
RANGE OF QUEUE DELAY - MIN	0.0
(VEH-H) MAX	0.0
RANGE OF DIVN DELAY - MIN	0.0
(VEH-H) MAX	0.0
AV BREAKDOWNS PER DAY	0.00
AV QUEUE DELAY/DAY (VEH-H)	0.0
AV DIVN DELAY/DAY (VEH-H)	0.0
AV TOTAL DELAY/DAY (VEH-H)	0.0

----- SITE ACCIDENT DELAYS -----	
ACCIDENT DURATION (MINS)	0
RANGE OF QUEUE DELAY - MIN	0.0
(VEH-H) MAX	0.0
RANGE OF DIVN DELAY - MIN	0.0
(VEH-H) MAX	0.0
AV ACCIDENTS PER DAY	0.00
AV QUEUE DELAY/DAY (VEH-H)	0.0
AV DIVN DELAY/DAY (VEH-H)	0.0
AV TOTAL DELAY/DAY (VEH-H)	0.0

AVERAGE ACCIDENT NUMBERS (PIA/DAY)	
MAIN ROUTE WITHOUT WORKS	0.0157
MAIN ROUTE WITH WORKS	0.0151
DIVERSION	0.0693

PIA: Personal Injury Accidents

IMPACTS ON ROAD USERS	
ROAD USER COSTS PER DAY (DOLLARS)	\$1,132
CONGESTED HOURS PER DAY*	0

*Delays Exceeding 15 Minutes

**USH 10: USH 45 TO CTH CB (WINNEBAGO COUNTY)
CONTINUOUS (24 HOUR) CLOSURE
DIVERSION ROUTE: CTH CB - CTH II**

AUGUST
Analyzed for 2009
Construction Season

GRAPHICAL REPRESENTATION OF TRAFFIC MODEL INPUT AND OUTPUT
SATURDAY EASTBOUND DIRECTION

