

**USH 10: USH 45 TO CTH CB (WINNEBAGO COUNTY)
CONTINUOUS (24 HOUR) CLOSURE
DIVERSION ROUTE: CTH CB - CTH II**

MAY
Analyzed for 2009
Construction Season

SUMMARY OF TRAFFIC MODEL OUTPUT
SUNDAY WESTBOUND DIRECTION

TIME OF DAY	FLOWS AND CAPACITY IN VEH/HR								AVERAGE SPEEDS IN MPH						
	MAIN ROUTE		ALTERNATE ROUTE		SITE CAPA CITY	FLOW MAIN ROUTE	FLOW DIVER -TING	TOTAL DIVN FLOW	AV.DEL PER VEH (MINS)	AVERAGE QUEUE (VEH)	MAIN ROUTE		ALTERNATE ROUTE		
	DEMAND FLOW	PCT HEAVY	NORMAL FLOW	PCT HEAVY							WITHOUT WORK ZN	WITH WORK ZN	SITE	WITHOUT WORK ZN	WITH WORK ZN
MID-1 AM	48	0.0	26	0.0	1500	48	0	26	0.43	0	66.3	63.5	45.3	34.5	34.5
1-2 AM	30	0.0	16	0.0	1500	30	0	16	0.43	0	66.3	63.5	45.4	34.6	34.6
2-3 AM	26	0.0	14	0.0	1500	26	0	14	0.42	0	66.3	63.5	45.4	34.6	34.6
3-4 AM	22	0.0	11	0.0	1500	22	0	11	0.42	0	66.3	63.5	45.4	34.7	34.7
4-5 AM	36	0.0	19	0.0	1500	36	0	19	0.43	0	66.3	63.5	45.3	34.6	34.6
5-6 AM	48	0.0	26	0.0	1500	48	0	26	0.43	0	66.3	63.5	45.3	34.5	34.5
6-7 AM	92	0.0	49	0.0	1500	92	0	49	0.43	0	66.2	63.3	45.1	34.2	34.2
7-8 AM	141	0.0	76	0.0	1500	141	0	76	0.44	0	66.1	63.2	44.9	34.0	34.0
8-9 AM	209	0.0	112	0.0	1500	209	0	112	0.44	0	66.0	63.1	44.6	33.5	33.5
9-10 AM	280	0.0	150	0.0	1500	280	0	150	0.45	0	65.9	62.9	44.3	33.1	33.1
10-11 AM	390	0.0	209	0.0	1500	390	0	209	0.46	0	65.6	62.7	43.9	32.5	32.5
11A-NOON	467	0.0	250	0.0	1500	467	0	250	0.47	0	65.5	62.5	43.7	32.0	32.0
NOON-1PM	485	0.0	260	0.0	1500	485	0	260	0.47	0	65.5	62.4	43.6	31.9	31.9
1-2 PM	463	0.0	248	0.0	1500	463	0	248	0.47	0	65.5	62.5	43.7	32.0	32.0
2-3 PM	423	0.0	227	0.0	1500	423	0	227	0.46	0	65.6	62.6	43.8	32.3	32.3
3-4 PM	446	0.0	240	0.0	1500	446	0	240	0.47	0	65.6	62.5	43.7	32.2	32.2
4-5 PM	443	0.0	238	0.0	1500	443	0	238	0.47	0	65.6	62.5	43.7	32.2	32.2
5-6 PM	410	0.0	220	0.0	1500	410	0	220	0.46	0	65.6	62.6	43.8	32.4	32.4
6-7 PM	359	0.0	192	0.0	1500	359	0	192	0.46	0	65.7	62.7	44.0	32.7	32.7
7-8 PM	288	0.0	154	0.0	1500	288	0	154	0.45	0	65.8	62.9	44.3	33.1	33.1
8-9 PM	180	0.0	97	0.0	1500	180	0	97	0.44	0	66.1	63.2	44.8	33.7	33.7
9-10 PM	133	0.0	71	0.0	1500	133	0	71	0.44	0	66.1	63.2	45.0	34.0	34.0
10-11 PM	84	0.0	45	0.0	1500	84	0	45	0.43	0	66.2	63.3	45.1	34.3	34.3
11PM-MID	43	0.0	23	0.0	1500	43	0	23	0.43	0	66.3	63.5	45.3	34.5	34.5

----- SITE BREAKDOWN DELAYS -----	
BREAKDOWN DURATION (MINS)	0
RANGE OF QUEUE DELAY - MIN (VEH-H) MAX	0.0
RANGE OF DIVN DELAY - MIN (VEH-H) MAX	0.0
AV BREAKDOWNS PER DAY	0.00
AV QUEUE DELAY/DAY (VEH-H)	0.0
AV DIVN DELAY/DAY (VEH-H)	0.0
AV TOTAL DELAY/DAY (VEH-H)	0.0

----- SITE ACCIDENT DELAYS -----	
ACCIDENT DURATION (MINS)	0
RANGE OF QUEUE DELAY - MIN (VEH-H) MAX	0.0
RANGE OF DIVN DELAY - MIN (VEH-H) MAX	0.0
AV ACCIDENTS PER DAY	0.00
AV QUEUE DELAY/DAY (VEH-H)	0.0
AV DIVN DELAY/DAY (VEH-H)	0.0
AV TOTAL DELAY/DAY (VEH-H)	0.0

AVERAGE ACCIDENT NUMBERS (PIA/DAY)	
MAIN ROUTE WITHOUT WORKS	0.0093
MAIN ROUTE WITH WORKS	0.0089
DIVERSION	0.0409

PIA: Personal Injury Accidents

IMPACTS ON ROAD USERS	
ROAD USER COSTS PER DAY (DOLLARS)	\$648
CONGESTED HOURS PER DAY*	0

*Delays Exceeding 15 Minutes

**USH 10: USH 45 TO CTH CB (WINNEBAGO COUNTY)
CONTINUOUS (24 HOUR) CLOSURE
DIVERSION ROUTE: CTH CB - CTH II**

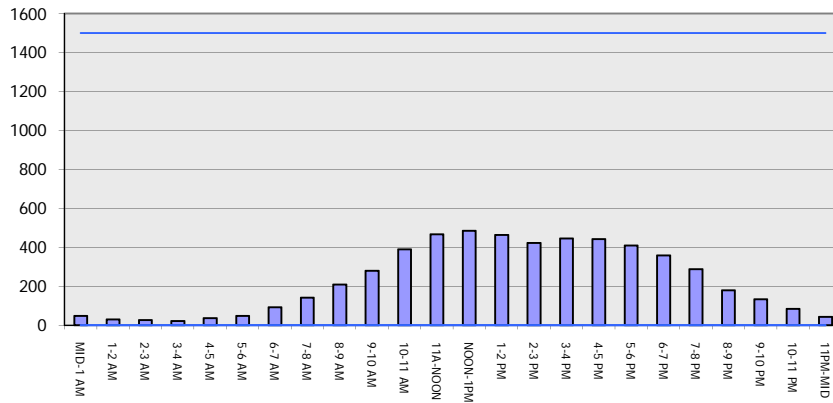
MAY

Analyzed for 2009
Construction Season

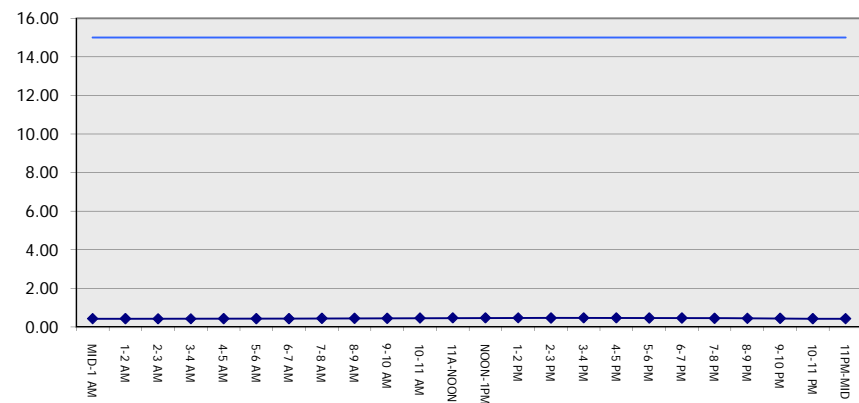
GRAPHICAL REPRESENTATION OF TRAFFIC MODEL INPUT AND OUTPUT

SUNDAY WESTBOUND DIRECTION

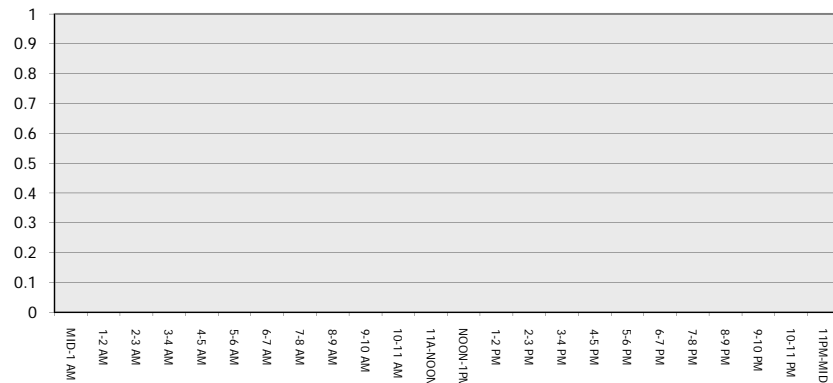
Main Route - Traffic Demand (Vehicles Per Hour)



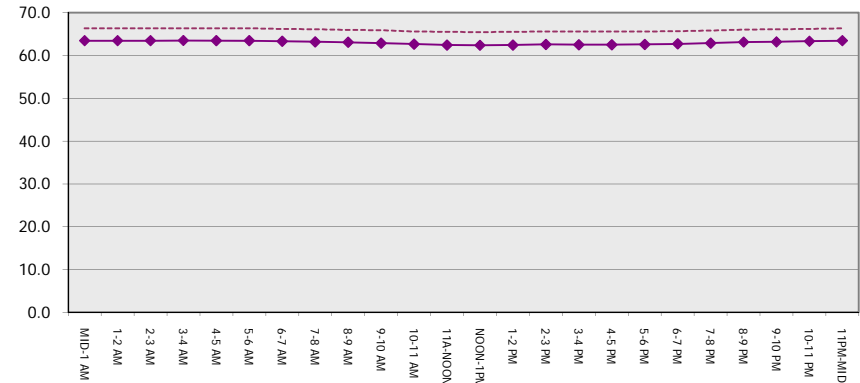
Main Route Average Delay Per Vehicle (Minutes)



Main Route - Average Queue Length (Vehicles)



Main Route - Average Speed (MPH)



USH 10: USH 45 TO CTH CB (WINNEBAGO COUNTY) CONTINUOUS (24 HOUR) CLOSURE DIVERSION ROUTE: CTH CB - CTH II	MAY
	Analyzed for 2009 Construction Season

SUMMARY OF TRAFFIC MODEL OUTPUT

SUNDAY EASTBOUND DIRECTION

TIME OF DAY	FLOWS AND CAPACITY IN VEH/HR								AVERAGE SPEEDS IN MPH						
	MAIN		DIVERSION		SITE CAPA CITY	FLOW MAIN ROUTE	FLOW DIVER -TING	TOTAL DIVN FLOW	AV.DEL PER VEH (MINS)	AVERAGE QUEUE (VEH)	MAIN ROUTE		SITE	ALTERNATE ROUTE	
	DEMAND FLOW	PCT HEAVY	NORMAL FLOW	PCT HEAVY							WITHOUT WORK ZN	WITH WORK ZN		WITHOUT WORK ZN	WITH WORK ZN
MID-1 AM	51	0.0	27	0.0	1500	51	0	27	0.43	0	66.3	63.5	45.3	34.5	34.5
1-2 AM	25	0.0	13	0.0	1500	25	0	13	0.42	0	66.3	63.5	45.4	34.7	34.7
2-3 AM	26	0.0	14	0.0	1500	26	0	14	0.42	0	66.3	63.5	45.4	34.6	34.6
3-4 AM	23	0.0	12	0.0	1500	23	0	12	0.42	0	66.3	63.5	45.4	34.7	34.7
4-5 AM	25	0.0	13	0.0	1500	25	0	13	0.42	0	66.3	63.5	45.4	34.7	34.7
5-6 AM	65	0.0	35	0.0	1500	65	0	35	0.43	0	66.3	63.4	45.2	34.4	34.4
6-7 AM	83	0.0	44	0.0	1500	83	0	44	0.43	0	66.3	63.3	45.1	34.3	34.3
7-8 AM	113	0.0	61	0.0	1500	113	0	61	0.43	0	66.2	63.3	45.0	34.1	34.1
8-9 AM	202	0.0	108	0.0	1500	202	0	108	0.44	0	66.0	63.1	44.6	33.6	33.6
9-10 AM	292	0.0	156	0.0	1500	292	0	156	0.45	0	65.8	62.9	44.3	33.0	33.0
10-11 AM	411	0.0	220	0.0	1500	411	0	220	0.46	0	65.6	62.6	43.8	32.4	32.4
11A-NOON	500	0.0	269	0.0	1500	500	0	269	0.47	0	65.5	62.4	43.5	31.9	31.9
NOON-1PM	520	0.0	279	0.0	1500	520	0	279	0.47	0	65.4	62.3	43.4	31.7	31.7
1-2 PM	497	0.0	267	0.0	1500	497	0	267	0.47	0	65.5	62.4	43.5	31.9	31.9
2-3 PM	529	0.0	283	0.0	1500	529	0	283	0.47	0	65.4	62.3	43.4	31.7	31.7
3-4 PM	576	0.0	309	0.0	1500	576	0	309	0.48	0	65.3	62.2	43.2	31.4	31.4
4-5 PM	556	0.0	298	0.0	1500	556	0	298	0.48	0	65.3	62.3	43.3	31.5	31.5
5-6 PM	555	0.0	298	0.0	1500	555	0	298	0.48	0	65.3	62.3	43.3	31.5	31.5
6-7 PM	465	0.0	249	0.0	1500	465	0	249	0.47	0	65.5	62.5	43.7	32.0	32.0
7-8 PM	393	0.0	211	0.0	1500	393	0	211	0.46	0	65.6	62.7	43.9	32.5	32.5
8-9 PM	289	0.0	155	0.0	1500	289	0	155	0.45	0	65.8	62.9	44.3	33.1	33.1
9-10 PM	202	0.0	108	0.0	1500	202	0	108	0.44	0	66.0	63.1	44.6	33.6	33.6
10-11 PM	123	0.0	66	0.0	1500	123	0	66	0.43	0	66.1	63.3	45.0	34.0	34.0
11PM-MID	65	0.0	35	0.0	1500	65	0	35	0.43	0	66.3	63.4	45.2	34.4	34.4

----- SITE BREAKDOWN DELAYS -----	
BREAKDOWN DURATION (MINS)	0
RANGE OF QUEUE DELAY - MIN	0.0
(VEH-H) MAX	0.0
RANGE OF DIVN DELAY - MIN	0.0
(VEH-H) MAX	0.0
AV BREAKDOWNS PER DAY	0.00
AV QUEUE DELAY/DAY (VEH-H)	0.0
AV DIVN DELAY/DAY (VEH-H)	0.0
AV TOTAL DELAY/DAY (VEH-H)	0.0

----- SITE ACCIDENT DELAYS -----	
ACCIDENT DURATION (MINS)	0
RANGE OF QUEUE DELAY - MIN	0.0
(VEH-H) MAX	0.0
RANGE OF DIVN DELAY - MIN	0.0
(VEH-H) MAX	0.0
AV ACCIDENTS PER DAY	0.00
AV QUEUE DELAY/DAY (VEH-H)	0.0
AV DIVN DELAY/DAY (VEH-H)	0.0
AV TOTAL DELAY/DAY (VEH-H)	0.0

AVERAGE ACCIDENT NUMBERS (PIA/DAY)	
MAIN ROUTE WITHOUT WORKS	0.0110
MAIN ROUTE WITH WORKS	0.0106
DIVERSION	0.0486

PIA: Personal Injury Accidents

IMPACTS ON ROAD USERS	
ROAD USER COSTS PER DAY (DOLLARS)	\$779
CONGESTED HOURS PER DAY*	0

*Delays Exceeding 15 Minutes

**USH 10: USH 45 TO CTH CB (WINNEBAGO COUNTY)
 CONTINUOUS (24 HOUR) CLOSURE
 DIVERSION ROUTE: CTH CB - CTH II**

MAY
 Analyzed for 2009
 Construction Season

GRAPHICAL REPRESENTATION OF TRAFFIC MODEL INPUT AND OUTPUT
SUNDAY EASTBOUND DIRECTION

