

**USH 10: USH 45 TO CTH CB (WINNEBAGO COUNTY)
CONTINUOUS (24 HOUR) CLOSURE
DIVERSION ROUTE: CTH CB - CTH II**

MAY
Analyzed for 2009
Construction Season

SUMMARY OF TRAFFIC MODEL OUTPUT

FRIDAY WESTBOUND DIRECTION

TIME OF DAY	FLOWS AND CAPACITY IN VEH/HR						AVERAGE SPEEDS IN MPH								
	MAIN ROUTE		ALTERNATE ROUTE		SITE CAPA CITY	FLOW MAIN ROUTE	FLOW DIVER -TING	TOTAL DIVN FLOW	AV.DEL PER VEH (MINS)	AVERAGE QUEUE (VEH)	MAIN ROUTE		ALTERNATE ROUTE		
	DEMAND FLOW	PCT HEAVY	NORMAL FLOW	PCT HEAVY							WITHOUT WORK ZN	WITH WORK ZN	SITE	WITHOUT WORK ZN	WITH WORK ZN
MID-1 AM	48	0.0	26	0.0	1500	48	0	26	0.43	0	66.3	63.5	45.3	34.5	34.5
1-2 AM	40	0.0	22	0.0	1500	40	0	22	0.43	0	66.3	63.5	45.3	34.5	34.5
2-3 AM	37	0.0	20	0.0	1500	37	0	20	0.43	0	66.3	63.5	45.3	34.6	34.6
3-4 AM	52	0.0	28	0.0	1500	52	0	28	0.43	0	66.3	63.4	45.3	34.5	34.5
4-5 AM	73	0.0	39	0.0	1500	73	0	39	0.43	0	66.3	63.4	45.2	34.3	34.3
5-6 AM	149	0.0	80	0.0	1500	149	0	80	0.44	0	66.1	63.2	44.9	33.9	33.9
6-7 AM	307	0.0	165	0.0	1500	307	0	165	0.45	0	65.8	62.8	44.3	33.0	33.0
7-8 AM	434	0.0	234	0.0	1500	434	0	234	0.46	0	65.6	62.5	43.8	32.2	32.2
8-9 AM	440	0.0	237	0.0	1500	440	0	237	0.47	0	65.6	62.5	43.7	32.2	32.2
9-10 AM	380	0.0	205	0.0	1500	380	0	205	0.46	0	65.7	62.7	44.0	32.5	32.5
10-11 AM	394	0.0	211	0.0	1500	394	0	211	0.46	0	65.6	62.7	43.9	32.5	32.5
11A-NOON	427	0.0	230	0.0	1500	427	0	230	0.46	0	65.6	62.6	43.8	32.2	32.2
NOON-1PM	484	0.0	259	0.0	1500	484	0	259	0.47	0	65.5	62.4	43.6	31.9	31.9
1-2 PM	552	0.0	296	0.0	1500	552	0	296	0.48	0	65.3	62.3	43.3	31.5	31.5
2-3 PM	649	0.0	349	0.0	1500	649	0	349	0.49	0	65.2	62.0	43.0	30.9	30.9
3-4 PM	833	0.0	447	0.0	1500	833	0	447	0.50	0	64.8	61.7	42.3	29.9	29.9
4-5 PM	1043	0.0	560	0.0	1500	1043	0	560	0.52	0	64.5	61.2	41.5	28.6	28.6
5-6 PM	941	0.0	505	0.0	1500	941	0	505	0.51	0	64.6	61.4	41.9	29.2	29.2
6-7 PM	627	0.0	337	0.0	1500	627	0	337	0.48	0	65.2	62.1	43.0	31.1	31.1
7-8 PM	387	0.0	207	0.0	1500	387	0	207	0.46	0	65.6	62.7	44.0	32.5	32.5
8-9 PM	286	0.0	153	0.0	1500	286	0	153	0.45	0	65.8	62.9	44.3	33.1	33.1
9-10 PM	263	0.0	141	0.0	1500	263	0	141	0.45	0	65.9	63.0	44.4	33.2	33.2
10-11 PM	188	0.0	101	0.0	1500	188	0	101	0.44	0	66.0	63.1	44.7	33.7	33.7
11PM-MID	131	0.0	70	0.0	1500	131	0	70	0.44	0	66.1	63.3	45.0	34.0	34.0

----- SITE BREAKDOWN DELAYS -----	
BREAKDOWN DURATION (MINS)	0
RANGE OF QUEUE DELAY - MIN	0.0
(VEH-H) MAX	0.0
RANGE OF DIVN DELAY - MIN	0.0
(VEH-H) MAX	0.0
AV BREAKDOWNS PER DAY	0.00
AV QUEUE DELAY/DAY (VEH-H)	0.0
AV DIVN DELAY/DAY (VEH-H)	0.0
AV TOTAL DELAY/DAY (VEH-H)	0.0

----- SITE ACCIDENT DELAYS -----	
ACCIDENT DURATION (MINS)	0
RANGE OF QUEUE DELAY - MIN	0.0
(VEH-H) MAX	0.0
RANGE OF DIVN DELAY - MIN	0.0
(VEH-H) MAX	0.0
AV ACCIDENTS PER DAY	0.00
AV QUEUE DELAY/DAY (VEH-H)	0.0
AV DIVN DELAY/DAY (VEH-H)	0.0
AV TOTAL DELAY/DAY (VEH-H)	0.0

AVERAGE ACCIDENT NUMBERS (PIA/DAY)	
MAIN ROUTE WITHOUT WORKS	0.0153
MAIN ROUTE WITH WORKS	0.0147
DIVERSION	0.0676

PIA: Personal Injury Accidents

IMPACTS ON ROAD USERS	
ROAD USER COSTS PER DAY (DOLLARS)	\$891
CONGESTED HOURS PER DAY*	0

*Delays Exceeding 15 Minutes

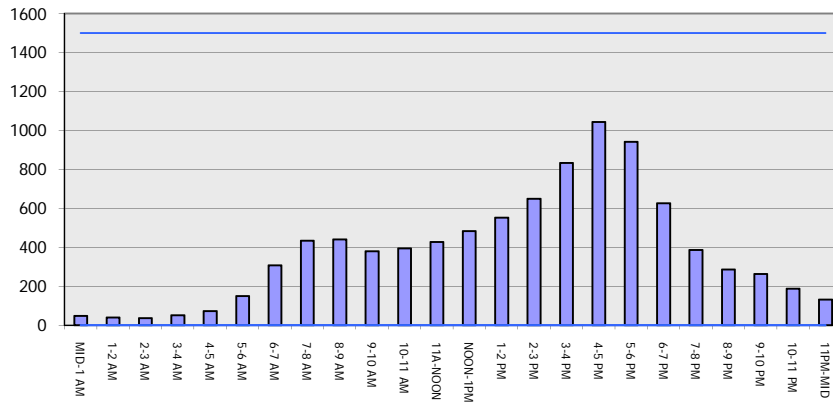
**USH 10: USH 45 TO CTH CB (WINNEBAGO COUNTY)
 CONTINUOUS (24 HOUR) CLOSURE
 DIVERSION ROUTE: CTH CB - CTH II**

MAY
 Analyzed for 2009
 Construction Season

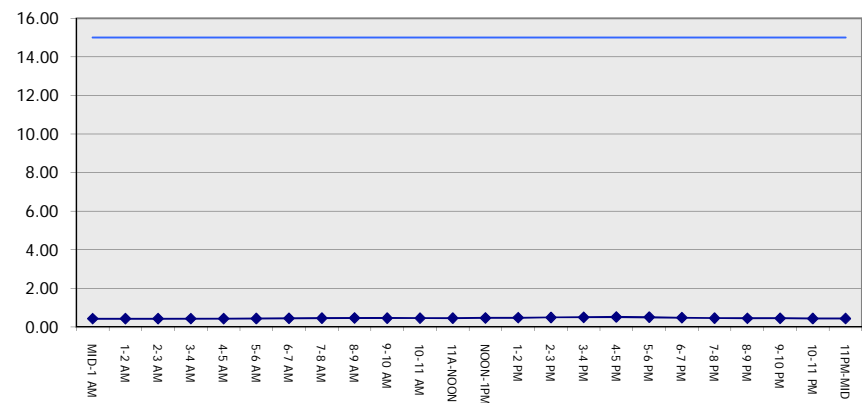
GRAPHICAL REPRESENTATION OF TRAFFIC MODEL INPUT AND OUTPUT

FRIDAY WESTBOUND DIRECTION

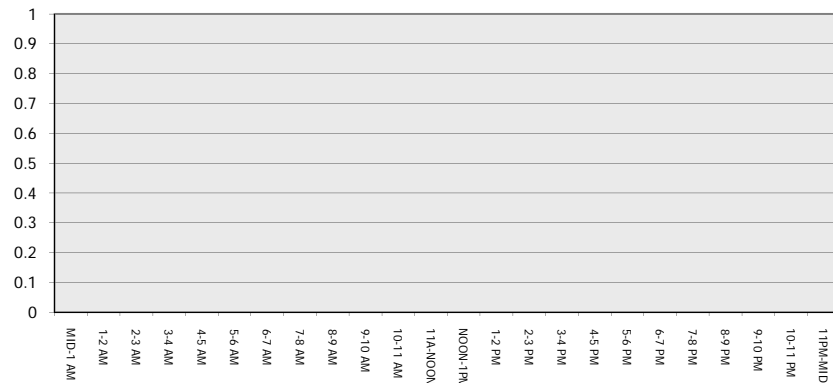
Main Route - Traffic Demand (Vehicles Per Hour)



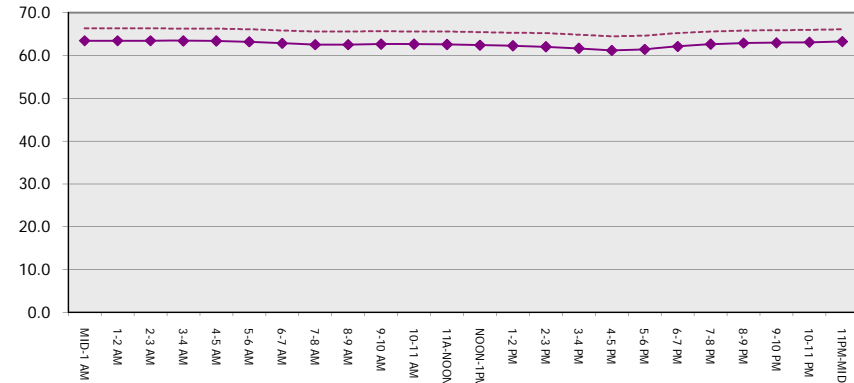
Main Route Average Delay Per Vehicle (Minutes)



Main Route - Average Queue Length (Vehicles)



Main Route - Average Speed (MPH)



USH 10: USH 45 TO CTH CB (WINNEBAGO COUNTY) CONTINUOUS (24 HOUR) CLOSURE DIVERSION ROUTE: CTH CB - CTH II	MAY
	Analyzed for 2009 Construction Season

SUMMARY OF TRAFFIC MODEL OUTPUT

FRIDAY EASTBOUND DIRECTION

TIME OF DAY	FLOWS AND CAPACITY IN VEH/HR								AVERAGE SPEEDS IN MPH						
	MAIN		DIVERSION		SITE CAPA CITY	FLOW MAIN ROUTE	FLOW DIVER -TING	TOTAL DIVN FLOW	AV.DEL PER VEH (MINS)	AVERAGE QUEUE (VEH)	MAIN ROUTE		SITE	ALTERNATE ROUTE	
	DEMAND FLOW	PCT HEAVY	NORMAL FLOW	PCT HEAVY							WITHOUT WORK ZN	WITH WORK ZN		WITHOUT WORK ZN	WITH WORK ZN
MID-1 AM	32	0.0	17	0.0	1500	32	0	17	0.43	0	66.3	63.5	45.4	34.6	34.6
1-2 AM	27	0.0	14	0.0	1500	27	0	14	0.43	0	66.3	63.5	45.4	34.6	34.6
2-3 AM	31	0.0	16	0.0	1500	31	0	16	0.43	0	66.3	63.5	45.4	34.6	34.6
3-4 AM	39	0.0	21	0.0	1500	39	0	21	0.43	0	66.3	63.5	45.3	34.5	34.5
4-5 AM	111	0.0	60	0.0	1500	111	0	60	0.43	0	66.2	63.3	45.0	34.1	34.1
5-6 AM	308	0.0	166	0.0	1500	308	0	166	0.45	0	65.8	62.8	44.3	33.0	33.0
6-7 AM	574	0.0	308	0.0	1500	574	0	308	0.48	0	65.3	62.2	43.2	31.4	31.4
7-8 AM	709	0.0	381	0.0	1500	709	0	381	0.49	0	65.1	61.9	42.7	30.6	30.6
8-9 AM	439	0.0	236	0.0	1500	439	0	236	0.47	0	65.6	62.5	43.7	32.2	32.2
9-10 AM	409	0.0	219	0.0	1500	409	0	219	0.46	0	65.6	62.6	43.8	32.4	32.4
10-11 AM	426	0.0	228	0.0	1500	426	0	228	0.46	0	65.6	62.6	43.8	32.3	32.3
11A-NOON	394	0.0	211	0.0	1500	394	0	211	0.46	0	65.6	62.7	43.9	32.5	32.5
NOON-1PM	418	0.0	224	0.0	1500	418	0	224	0.46	0	65.6	62.6	43.8	32.3	32.3
1-2 PM	488	0.0	262	0.0	1500	488	0	262	0.47	0	65.5	62.4	43.5	31.9	31.9
2-3 PM	499	0.0	268	0.0	1500	499	0	268	0.47	0	65.5	62.4	43.5	31.9	31.9
3-4 PM	542	0.0	291	0.0	1500	542	0	291	0.47	0	65.4	62.3	43.3	31.6	31.6
4-5 PM	599	0.0	321	0.0	1500	599	0	321	0.48	0	65.3	62.2	43.2	31.2	31.2
5-6 PM	546	0.0	292	0.0	1500	546	0	292	0.48	0	65.4	62.3	43.3	31.5	31.5
6-7 PM	425	0.0	228	0.0	1500	425	0	228	0.46	0	65.6	62.6	43.8	32.3	32.3
7-8 PM	281	0.0	150	0.0	1500	281	0	150	0.45	0	65.9	62.9	44.3	33.1	33.1
8-9 PM	253	0.0	136	0.0	1500	253	0	136	0.45	0	65.9	63.0	44.5	33.3	33.3
9-10 PM	200	0.0	107	0.0	1500	200	0	107	0.44	0	66.0	63.1	44.7	33.6	33.6
10-11 PM	144	0.0	77	0.0	1500	144	0	77	0.44	0	66.1	63.2	44.9	33.9	33.9
11PM-MID	88	0.0	47	0.0	1500	88	0	47	0.43	0	66.2	63.3	45.1	34.3	34.3

----- SITE BREAKDOWN DELAYS -----	
BREAKDOWN DURATION (MINS)	0
RANGE OF QUEUE DELAY - MIN	0.0
(VEH-H) MAX	0.0
RANGE OF DIVN DELAY - MIN	0.0
(VEH-H) MAX	0.0
AV BREAKDOWNS PER DAY	0.00
AV QUEUE DELAY/DAY (VEH-H)	0.0
AV DIVN DELAY/DAY (VEH-H)	0.0
AV TOTAL DELAY/DAY (VEH-H)	0.0

----- SITE ACCIDENT DELAYS -----	
ACCIDENT DURATION (MINS)	0
RANGE OF QUEUE DELAY - MIN	0.0
(VEH-H) MAX	0.0
RANGE OF DIVN DELAY - MIN	0.0
(VEH-H) MAX	0.0
AV ACCIDENTS PER DAY	0.00
AV QUEUE DELAY/DAY (VEH-H)	0.0
AV DIVN DELAY/DAY (VEH-H)	0.0
AV TOTAL DELAY/DAY (VEH-H)	0.0

AVERAGE ACCIDENT NUMBERS (PIA/DAY)	
MAIN ROUTE WITHOUT WORKS	0.0133
MAIN ROUTE WITH WORKS	0.0128
DIVERSION	0.0589

PIA: Personal Injury Accidents

IMPACTS ON ROAD USERS	
ROAD USER COSTS PER DAY (DOLLARS)	\$756
CONGESTED HOURS PER DAY*	0

*Delays Exceeding 15 Minutes

**USH 10: USH 45 TO CTH CB (WINNEBAGO COUNTY)
CONTINUOUS (24 HOUR) CLOSURE
DIVERSION ROUTE: CTH CB - CTH II**

MAY
Analyzed for 2009
Construction Season

GRAPHICAL REPRESENTATION OF TRAFFIC MODEL INPUT AND OUTPUT
FRIDAY EASTBOUND DIRECTION

