

USH 41: STH 44 TO STH 26 (WINNEBAGO COUNTY) CONTINUOUS (24 HOUR) CLOSURE NO DIVERSION ROUTE (MAX QUEUE METHOD)	OCTOBER
	Analyzed for 2009 Construction Season

SUMMARY OF TRAFFIC MODEL OUTPUT

SUNDAY SOUTHBOUND DIRECTION

TIME OF DAY	FLOWS AND CAPACITY IN VEH/HR						AVERAGE SPEEDS IN MPH			
	MAIN ROUTE		SITE CAPA CITY	FLOW		AV.DEL PER VEH (MINS)	AVERAGE QUEUE (VEH)	MAIN ROUTE		SITE
	DEMAND FLOW	PCT HEAVY		MAIN ROUTE	'DIVER TED'			WITHOUT WORK ZONE	WITH WORK ZONE	
MID-1 AM	241	0.0	1500	241	0	0.45	0	66.0	55.8	44.5
1-2 AM	148	0.0	1500	148	0	0.44	0	66.1	56.1	44.9
2-3 AM	130	0.0	1500	130	0	0.44	0	66.1	56.2	45.0
3-4 AM	108	0.0	1500	108	0	0.43	0	66.2	56.3	45.1
4-5 AM	117	0.0	1500	117	0	0.43	0	66.1	56.2	45.0
5-6 AM	183	0.0	1500	183	0	0.44	0	66.1	56.0	44.8
6-7 AM	291	0.0	1500	291	0	0.45	0	65.8	55.6	44.3
7-8 AM	424	0.0	1500	424	0	0.46	0	65.6	55.2	43.8
8-9 AM	687	0.0	1500	687	0	0.49	0	65.1	54.4	42.8
9-10 AM	1036	0.0	1499	1036	0	0.54	0	64.5	53.1	41.2
10-11 AM	1532	0.0	1499	1532	0	1.49	16	63.5	40.1	31.5
11AM-NOON	1870	0.0	1500	1870	0	8.86	239	62.9	14.6	30.8
NOON-1PM	1966	0.0	1499	1498	468	16.38+	415	62.7	9.7	30.8
1-2 PM	2005	0.0	1499	1498	507	16.38+	415	62.7	9.7	30.8
2-3 PM	2257	0.0	1499	1498	758	16.37+	415	62.2	9.7	30.8
3-4 PM	2311	0.0	1499	1498	813	16.37+	415	62.1	9.7	30.8
4-5 PM	2274	0.0	1499	1499	775	16.37+	415	62.2	9.7	30.8
5-6 PM	2060	0.0	1499	1499	561	16.38+	415	62.5	9.7	30.8
6-7 PM	1706	0.0	1500	1497	208	16.39+	414	63.2	9.7	30.8
7-8 PM	1239	0.0	1499	1239	0	12.54+	323	64.1	11.4	31.5
8-9 PM	790	0.0	1500	790	0	0.93	21	64.9	47.3	42.3
9-10 PM	513	0.0	1500	513	0	0.47	0	65.5	55.0	43.5
10-11 PM	379	0.0	1500	379	0	0.46	0	65.7	55.4	44.0
11PM-MID	353	0.0	1500	353	0	0.46	0	65.7	55.5	44.1

+ INDICATES QUEUEING EXCEEDS USER-SPECIFIED MAXIMUM LIMIT

----- SITE BREAKDOWN DELAYS -----	
BREAKDOWN DURATION (MINS)	0
RANGE OF QUEUE DELAY - MIN (VEH-H) MAX	0.0
AV BREAKDOWNS PER DAY	0.00
AV QUEUE DELAY/DAY (VEH-H)	0.0
AV TOTAL DELAY/DAY (VEH-H)	0.0

----- SITE ACCIDENT DELAYS -----	
BREAKDOWN DURATION (MINS)	0
RANGE OF QUEUE DELAY - MIN (VEH-H) MAX	0
AV BREAKDOWNS PER DAY	0
AV QUEUE DELAY/DAY (VEH-H)	0
AV TOTAL DELAY/DAY (VEH-H)	0

AVERAGE ACCIDENT NUMBERS (PIA/DAY)	
MAIN ROUTE WITHOUT WORKS	0.0106
MAIN ROUTE WITH WORKS	0.0075
'DIVERSION'	0.0041
<small>PIA: Personal Injury Accidents</small>	
IMPACTS ON ROAD USERS	
ROAD USER COSTS PER DAY	\$77,943
CONGESTED HOURS PER DAY*	8

*Delays Exceeding User-Specified Maximum

**USH 41: STH 44 TO STH 26 (WINNEBAGO COUNTY)
CONTINUOUS (24 HOUR) CLOSURE
NO DIVERSION ROUTE (MAX QUEUE METHOD)**

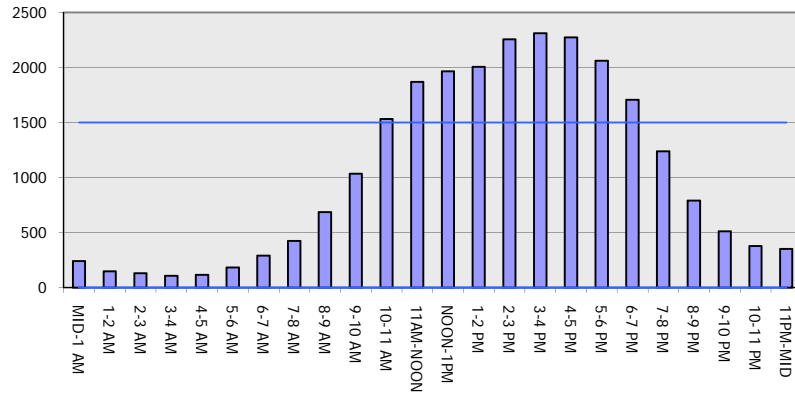
OCTOBER

Analyzed for 2009
Construction Season

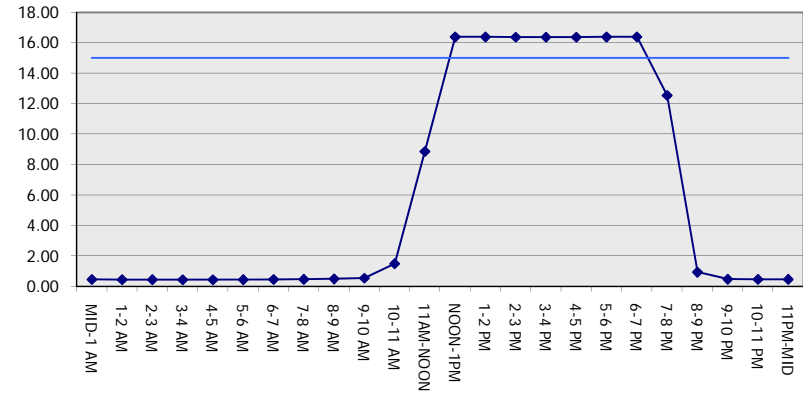
GRAPHICAL REPRESENTATION OF TRAFFIC MODEL INPUT AND OUTPUT

SUNDAY SOUTHBOUND DIRECTION

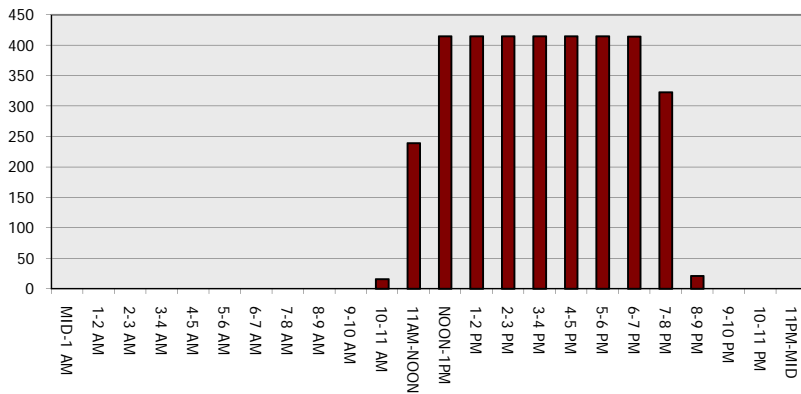
Main Route - Traffic Demand (Vehicles Per Hour)



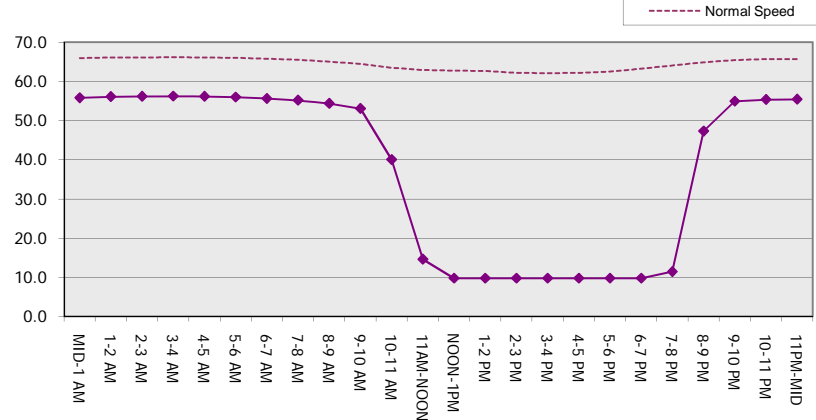
Main Route Average Delay Per Vehicle (Minutes)



Main Route - Average Queue Length (Vehicles)



Main Route - Average Speed (MPH)



USH 41: STH 44 TO STH 26 (WINNEBAGO COUNTY) CONTINUOUS (24 HOUR) CLOSURE NO DIVERSION ROUTE (MAX QUEUE METHOD)	OCTOBER
	Analyzed for 2009 Construction Season

SUMMARY OF TRAFFIC MODEL OUTPUT

SUNDAY NORTHBOUND DIRECTION

TIME OF DAY	FLOWS AND CAPACITY IN VEH/HR						AVERAGE SPEEDS IN MPH			
	MAIN ROUTE		SITE CAPA CITY	FLOW		AV.DEL PER VEH (MINS)	AVERAGE QUEUE (VEH)	MAIN ROUTE		SITE
	DEMAND FLOW	PCT HEAVY		MAIN ROUTE	'DIVER TED'			WITHOUT WORK ZONE	WITH WORK ZONE	
MID-1 AM	199	0.0	1500	199	0	0.44	0	66.0	56.0	44.7
1-2 AM	134	0.0	1500	134	0	0.44	0	66.1	56.1	45.0
2-3 AM	99	0.0	1500	99	0	0.43	0	66.2	56.3	45.1
3-4 AM	74	0.0	1500	74	0	0.43	0	66.3	56.3	45.2
4-5 AM	83	0.0	1500	83	0	0.43	0	66.2	56.3	45.1
5-6 AM	188	0.0	1500	188	0	0.44	0	66.0	56.0	44.7
6-7 AM	226	0.0	1500	226	0	0.44	0	66.0	55.9	44.6
7-8 AM	362	0.0	1500	362	0	0.46	0	65.7	55.5	44.0
8-9 AM	793	0.0	1500	793	0	0.50	0	64.9	54.1	42.4
9-10 AM	1081	0.0	1500	1081	0	0.53	0	64.4	53.2	41.4
10-11 AM	1206	0.0	1500	1206	0	0.64	0	64.1	51.1	38.3
11AM-NOON	1355	0.0	1500	1355	0	0.84	0	63.8	48.0	34.1
NOON-1PM	1480	0.0	1500	1480	0	1.00	0	63.7	45.7	31.2
1-2 PM	1482	0.0	1499	1482	0	1.00	0	63.7	45.6	31.2
2-3 PM	1530	0.0	1499	1530	0	1.42	11	63.5	40.8	30.8
3-4 PM	1600	0.0	1500	1600	0	3.85	80	63.4	25.3	30.8
4-5 PM	1515	0.0	1499	1515	0	6.38	144	63.6	18.1	30.8
5-6 PM	1366	0.0	1499	1366	0	3.98	88	63.8	24.8	31.7
6-7 PM	1171	0.0	1500	1171	0	0.60	0	64.2	51.8	39.5
7-8 PM	946	0.0	1500	946	0	0.51	0	64.6	53.7	41.9
8-9 PM	631	0.0	1500	631	0	0.48	0	65.2	54.6	43.0
9-10 PM	467	0.0	1500	467	0	0.47	0	65.5	55.1	43.7
10-11 PM	338	0.0	1500	338	0	0.46	0	65.8	55.5	44.2
11PM-MID	191	0.0	1500	191	0	0.44	0	66.0	56.0	44.7

----- SITE BREAKDOWN DELAYS -----	
BREAKDOWN DURATION (MINS)	0
RANGE OF QUEUE DELAY - MIN (VEH-H) MAX	0.0
AV BREAKDOWNS PER DAY	0.00
AV QUEUE DELAY/DAY (VEH-H)	0.0
AV TOTAL DELAY/DAY (VEH-H)	0.0

----- SITE ACCIDENT DELAYS -----	
BREAKDOWN DURATION (MINS)	0
RANGE OF QUEUE DELAY - MIN (VEH-H) MAX	0
AV BREAKDOWNS PER DAY	0
AV QUEUE DELAY/DAY (VEH-H)	0
AV TOTAL DELAY/DAY (VEH-H)	0

AVERAGE ACCIDENT NUMBERS (PIA/DAY)	
MAIN ROUTE WITHOUT WORKS	0.0080
MAIN ROUTE WITH WORKS	0.0067
'DIVERSION'	0.0000

PIA: Personal Injury Accidents

ECONOMIC IMPACT ON ROAD USERS	
ROAD USER COSTS PER DAY	\$8,986
CONGESTED HOURS PER DAY*	0

*Delays Exceeding User-Specified Maximum

**USH 41: STH 44 TO STH 26 (WINNEBAGO COUNTY)
CONTINUOUS (24 HOUR) CLOSURE
NO DIVERSION ROUTE (MAX QUEUE METHOD)**

OCTOBER

Analyzed for 2009
Construction Season

GRAPHICAL REPRESENTATION OF TRAFFIC MODEL INPUT AND OUTPUT
SUNDAY NORTHBOUND DIRECTION

