

USH 41: STH 44 TO STH 26 (WINNEBAGO COUNTY) CONTINUOUS (24 HOUR) CLOSURE NO DIVERSION ROUTE (MAX QUEUE METHOD)	OCTOBER
	Analyzed for 2009 Construction Season

SUMMARY OF TRAFFIC MODEL OUTPUT

MON-THUR SOUTHBOUND DIRECTION

TIME OF DAY	FLOWS AND CAPACITY IN VEH/HR							AVERAGE SPEEDS IN MPH			
	MAIN ROUTE		SITE CAPA CITY	FLOW		AV.DEL PER VEH (MINS)	AVERAGE QUEUE (VEH)	MAIN ROUTE		SITE	
	DEMAND FLOW	PCT HEAVY		MAIN ROUTE	'DIVER TED'			WITHOUT WORK ZONE	WITH WORK ZONE		
MID-1 AM	201	0.0	1500	201	0	0.44	0	66.0	56.0	44.6	
1-2 AM	155	0.0	1500	155	0	0.44	0	66.1	56.1	44.8	
2-3 AM	115	0.0	1500	115	0	0.43	0	66.2	56.2	45.0	
3-4 AM	178	0.0	1500	178	0	0.44	0	66.1	56.0	44.8	
4-5 AM	352	0.0	1500	352	0	0.46	0	65.7	55.5	44.1	
5-6 AM	840	0.0	1500	840	0	0.50	0	64.8	54.0	42.2	
6-7 AM	1495	0.0	1499	1495	0	1.45	18	63.6	40.5	32.6	
7-8 AM	2081	0.0	1500	1787	293	11.76+	316	62.5	12.0	30.8	
8-9 AM	1582	0.0	1500	1540	43	16.01+	404	63.5	9.9	30.8	
9-10 AM	1333	0.0	1499	1333	0	13.02+	326	63.9	11.0	30.8	
10-11 AM	1321	0.0	1500	1321	0	5.97	144	63.9	19.1	31.2	
11AM-NOON	1383	0.0	1500	1383	0	1.27	11	63.8	42.5	32.9	
NOON-1PM	1432	0.0	1499	1432	0	0.94	0	63.7	46.6	32.2	
1-2 PM	1512	0.0	1499	1512	0	1.22	6	63.6	43.0	31.1	
2-3 PM	1737	0.0	1500	1737	0	5.18	129	63.2	20.9	30.8	
3-4 PM	1970	0.0	1500	1695	275	15.34+	390	62.7	10.1	30.8	
4-5 PM	2142	0.0	1499	1496	646	16.38+	415	62.4	9.7	30.8	
5-6 PM	1846	0.0	1499	1471	375	16.29+	412	63.0	9.7	30.8	
6-7 PM	1167	0.0	1499	1167	0	10.75+	290	64.2	12.8	33.1	
7-8 PM	808	0.0	1500	808	0	0.66	6	64.9	51.4	42.4	
8-9 PM	699	0.0	1500	699	0	0.49	0	65.1	54.4	42.8	
9-10 PM	550	0.0	1500	550	0	0.48	0	65.4	54.8	43.3	
10-11 PM	411	0.0	1500	411	0	0.46	0	65.6	55.3	43.8	
11PM-MID	255	0.0	1500	255	0	0.45	0	65.9	55.8	44.5	

+ INDICATES QUEUEING EXCEEDS USER-SPECIFIED MAXIMUM LIMIT

----- SITE BREAKDOWN DELAYS -----	
BREAKDOWN DURATION (MINS)	0
RANGE OF QUEUE DELAY - MIN (VEH-H) MAX	0.0
AV BREAKDOWNS PER DAY	0.00
AV QUEUE DELAY/DAY (VEH-H)	0.0
AV TOTAL DELAY/DAY (VEH-H)	0.0

----- SITE ACCIDENT DELAYS -----	
BREAKDOWN DURATION (MINS)	0
RANGE OF QUEUE DELAY - MIN (VEH-H) MAX	0
AV BREAKDOWNS PER DAY	0
AV QUEUE DELAY/DAY (VEH-H)	0
AV TOTAL DELAY/DAY (VEH-H)	0

AVERAGE ACCIDENT NUMBERS (PIA/DAY)	
MAIN ROUTE WITHOUT WORKS	0.0110
MAIN ROUTE WITH WORKS	0.0087
'DIVERSION'	0.0016
PIA: Personal Injury Accidents	
IMPACTS ON ROAD USERS	
ROAD USER COSTS PER DAY	\$44,090
CONGESTED HOURS PER DAY*	7

*Delays Exceeding User-Specified Maximum

**USH 41: STH 44 TO STH 26 (WINNEBAGO COUNTY)
CONTINUOUS (24 HOUR) CLOSURE
NO DIVERSION ROUTE (MAX QUEUE METHOD)**

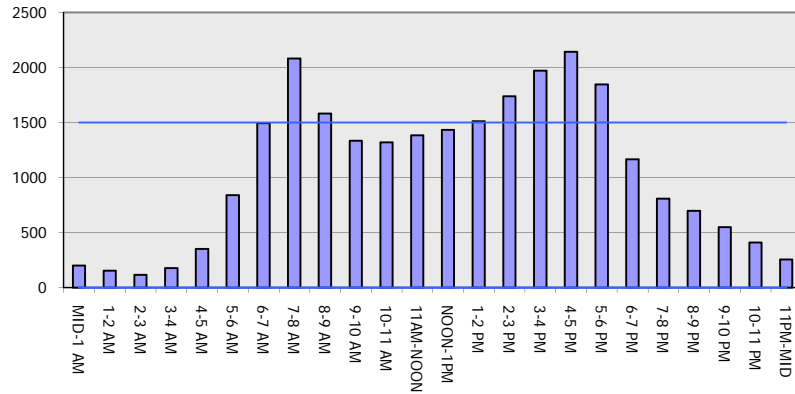
OCTOBER

Analyzed for 2009
Construction Season

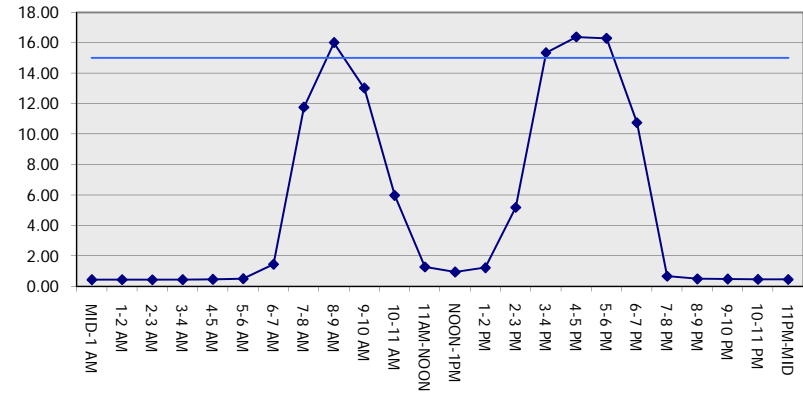
GRAPHICAL REPRESENTATION OF TRAFFIC MODEL INPUT AND OUTPUT

MON-THUR SOUTHBOUND DIRECTION

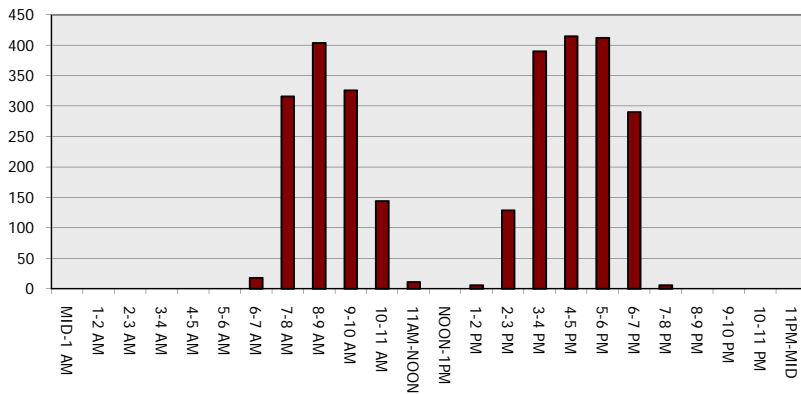
Main Route - Traffic Demand (Vehicles Per Hour)



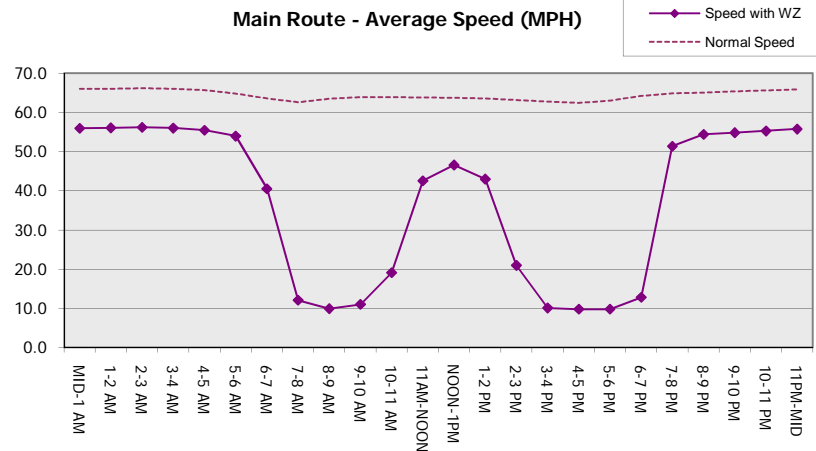
Main Route Average Delay Per Vehicle (Minutes)



Main Route - Average Queue Length (Vehicles)



Main Route - Average Speed (MPH)



USH 41: STH 44 TO STH 26 (WINNEBAGO COUNTY) CONTINUOUS (24 HOUR) CLOSURE NO DIVERSION ROUTE (MAX QUEUE METHOD)	OCTOBER
	Analyzed for 2009 Construction Season

SUMMARY OF TRAFFIC MODEL OUTPUT

MON-THUR NORTHBOUND DIRECTION

TIME OF DAY	FLOWS AND CAPACITY IN VEH/HR							AVERAGE SPEEDS IN MPH		
	MAIN ROUTE		SITE CAPA CITY	FLOW		AV.DEL PER VEH (MINS)	AVERAGE QUEUE (VEH)	MAIN ROUTE		SITE
	DEMAND FLOW	PCT HEAVY		MAIN ROUTE	'DIVER TED'			WITHOUT WORK ZONE	WITH WORK ZONE	
MID-1 AM	143	0.0	1500	143	0	0.44	0	66.1	56.1	44.9
1-2 AM	108	0.0	1500	108	0	0.43	0	66.2	56.3	45.1
2-3 AM	105	0.0	1500	105	0	0.43	0	66.2	56.3	45.1
3-4 AM	138	0.0	1500	138	0	0.44	0	66.1	56.1	45.0
4-5 AM	244	0.0	1500	244	0	0.45	0	66.0	55.8	44.5
5-6 AM	684	0.0	1500	684	0	0.49	0	65.1	54.4	42.8
6-7 AM	1272	0.0	1499	1272	0	0.72	0	64.0	49.9	36.7
7-8 AM	1811	0.0	1499	1811	0	5.83	154	63.0	19.3	30.8
8-9 AM	1290	0.0	1499	1290	0	8.87	224	64.0	14.3	31.5
9-10 AM	1219	0.0	1500	1219	0	1.17	18	64.1	43.8	36.9
10-11 AM	1222	0.0	1500	1222	0	0.67	0	64.1	50.7	37.8
11AM-NOON	1253	0.0	1500	1253	0	0.70	0	64.0	50.1	36.8
NOON-1PM	1297	0.0	1500	1297	0	0.76	0	64.0	49.2	35.6
1-2 PM	1354	0.0	1499	1354	0	0.83	0	63.8	48.1	34.1
2-3 PM	1536	0.0	1499	1536	0	1.36	10	63.5	41.4	30.9
3-4 PM	1727	0.0	1500	1727	0	5.69	141	63.2	19.6	30.8
4-5 PM	1979	0.0	1500	1675	304	15.49+	393	62.7	10.0	30.8
5-6 PM	1833	0.0	1499	1493	340	16.37+	414	63.0	9.7	30.8
6-7 PM	1212	0.0	1499	1212	0	12.45+	325	64.1	11.6	32.0
7-8 PM	802	0.0	1500	802	0	0.86	17	64.9	48.3	42.3
8-9 PM	653	0.0	1500	653	0	0.49	0	65.1	54.5	42.9
9-10 PM	512	0.0	1500	512	0	0.47	0	65.5	55.0	43.5
10-11 PM	375	0.0	1500	375	0	0.46	0	65.7	55.4	44.0
11PM-MID	258	0.0	1500	258	0	0.45	0	65.9	55.8	44.5

+ INDICATES QUEUEING EXCEEDS USER-SPECIFIED MAXIMUM LIMIT

----- SITE BREAKDOWN DELAYS -----	
BREAKDOWN DURATION (MINS)	0
RANGE OF QUEUE DELAY - MIN (VEH-H) MAX	0.0
AV BREAKDOWNS PER DAY	0.00
AV QUEUE DELAY/DAY (VEH-H)	0.0
AV TOTAL DELAY/DAY (VEH-H)	0.0

----- SITE ACCIDENT DELAYS -----	
BREAKDOWN DURATION (MINS)	0
RANGE OF QUEUE DELAY - MIN (VEH-H) MAX	0
AV BREAKDOWNS PER DAY	0
AV QUEUE DELAY/DAY (VEH-H)	0
AV TOTAL DELAY/DAY (VEH-H)	0

AVERAGE ACCIDENT NUMBERS (PIA/DAY)	
MAIN ROUTE WITHOUT WORKS	0.0099
MAIN ROUTE WITH WORKS	0.0082
'DIVERSION'	0.0006

PIA: Personal Injury Accidents

ECONOMIC IMPACT ON ROAD USERS	
ROAD USER COSTS PER DAY	\$25,837
CONGESTED HOURS PER DAY*	3

*Delays Exceeding User-Specified Maximum

**USH 41: STH 44 TO STH 26 (WINNEBAGO COUNTY)
CONTINUOUS (24 HOUR) CLOSURE
NO DIVERSION ROUTE (MAX QUEUE METHOD)**

OCTOBER

Analyzed for 2009
Construction Season

GRAPHICAL REPRESENTATION OF TRAFFIC MODEL INPUT AND OUTPUT
MON-THUR NORTHBOUND DIRECTION

