

**USH 41: STH 44 TO STH 26 (WINNEBAGO COUNTY)
CONTINUOUS (24 HOUR) CLOSURE
NO DIVERSION ROUTE (MAX QUEUE METHOD)**

AUGUST

Analyzed for 2009
Construction Season

SUMMARY OF TRAFFIC MODEL OUTPUT

SUNDAY SOUTHBOUND DIRECTION

TIME OF DAY	FLOWS AND CAPACITY IN VEH/HR						AVERAGE SPEEDS IN MPH				
	MAIN ROUTE		SITE CAPA CITY	FLOW		AV.DEL PER VEH (MINS)	AVERAGE QUEUE (VEH)	MAIN ROUTE		SITE	
	DEMAND FLOW	PCT HEAVY		MAIN ROUTE	'DIVER TED'			WITHOUT WORK ZONE	WITH WORK ZONE		
MID-1 AM	573	0.0	1500	573	0	0.48	0	65.3	54.8	43.2	
1-2 AM	184	0.0	1500	184	0	0.44	0	66.0	56.0	44.8	
2-3 AM	133	0.0	1500	133	0	0.44	0	66.1	56.1	45.0	
3-4 AM	114	0.0	1500	114	0	0.43	0	66.2	56.2	45.0	
4-5 AM	115	0.0	1500	115	0	0.43	0	66.2	56.2	45.0	
5-6 AM	169	0.0	1500	169	0	0.44	0	66.1	56.0	44.8	
6-7 AM	288	0.0	1500	288	0	0.45	0	65.8	55.6	44.3	
7-8 AM	515	0.0	1500	515	0	0.47	0	65.5	55.0	43.5	
8-9 AM	941	0.0	1499	941	0	0.51	0	64.6	53.7	41.9	
9-10 AM	1417	0.0	1499	1417	0	1.10	7	63.7	44.5	33.5	
10-11 AM	2065	0.0	1500	1935	130	9.14+	260	62.5	14.5	30.8	
11AM-NOON	2372	0.0	1500	1493	879	16.39+	416	62.0	9.7	30.8	
NOON-1PM	2359	0.0	1499	1496	863	16.37+	416	62.0	9.7	30.8	
1-2 PM	2418	0.0	1499	1495	923	16.37+	416	61.7	9.7	30.8	
2-3 PM	2451	0.0	1499	1495	956	16.35+	416	61.4	9.7	30.8	
3-4 PM	2436	0.0	1499	1497	938	16.35+	416	61.5	9.7	30.8	
4-5 PM	2394	0.0	1499	1498	897	16.37+	416	61.9	9.7	30.8	
5-6 PM	2169	0.0	1499	1498	671	16.38+	415	62.3	9.7	30.8	
6-7 PM	1773	0.0	1499	1497	276	16.39+	415	63.1	9.7	30.8	
7-8 PM	1395	0.0	1499	1364	31	14.90+	375	63.8	10.2	30.8	
8-9 PM	1045	0.0	1499	1045	0	2.90	114	64.5	29.9	37.5	
9-10 PM	660	0.0	1500	660	0	0.49	0	65.1	54.5	42.9	
10-11 PM	447	0.0	1500	447	0	0.47	0	65.6	55.1	43.7	
11PM-MID	230	0.0	1500	230	0	0.44	0	66.0	55.8	44.6	

+ INDICATES QUEUEING EXCEEDS USER-SPECIFIED MAXIMUM LIMIT

----- SITE BREAKDOWN DELAYS -----	
BREAKDOWN DURATION (MINS)	0
RANGE OF QUEUE DELAY - MIN (VEH-H) MAX	0.0
AV BREAKDOWNS PER DAY	0.00
AV QUEUE DELAY/DAY (VEH-H)	0.0
AV TOTAL DELAY/DAY (VEH-H)	0.0

----- SITE ACCIDENT DELAYS -----	
BREAKDOWN DURATION (MINS)	0
RANGE OF QUEUE DELAY - MIN (VEH-H) MAX	0
AV BREAKDOWNS PER DAY	0
AV QUEUE DELAY/DAY (VEH-H)	0
AV TOTAL DELAY/DAY (VEH-H)	0

AVERAGE ACCIDENT NUMBERS (PIA/DAY)	
MAIN ROUTE WITHOUT WORKS	0.0123
MAIN ROUTE WITH WORKS	0.0080
'DIVERSION'	0.0065
PIA: Personal Injury Accidents	
IMPACTS ON ROAD USERS	
ROAD USER COSTS PER DAY	\$98,345
CONGESTED HOURS PER DAY*	10

*Delays Exceeding User-Specified Maximum

**USH 41: STH 44 TO STH 26 (WINNEBAGO COUNTY)
CONTINUOUS (24 HOUR) CLOSURE
NO DIVERSION ROUTE (MAX QUEUE METHOD)**

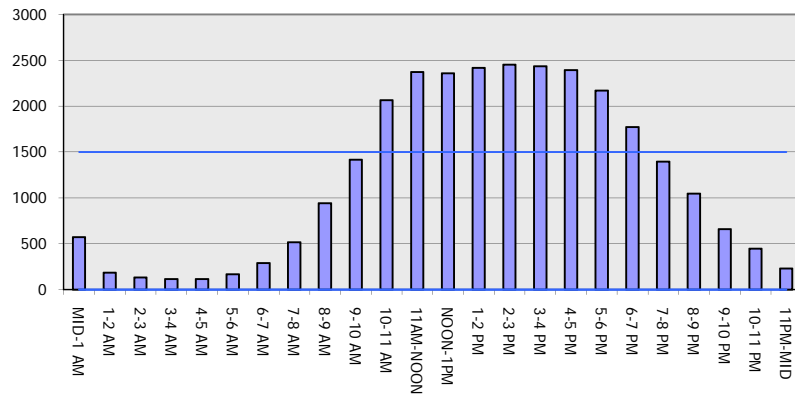
AUGUST

Analyzed for 2009
Construction Season

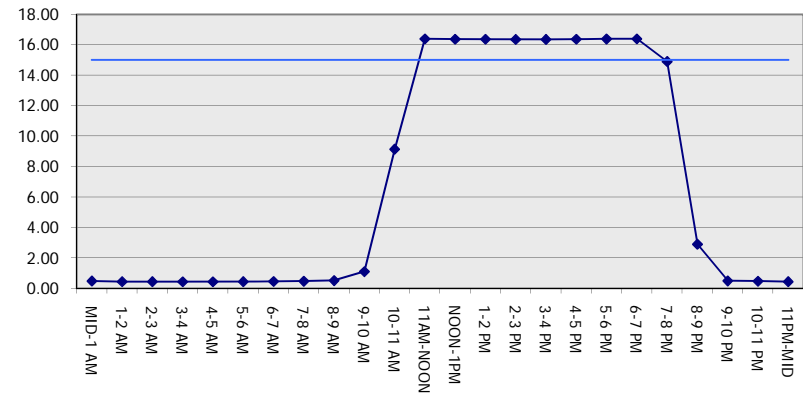
GRAPHICAL REPRESENTATION OF TRAFFIC MODEL INPUT AND OUTPUT

SUNDAY SOUTHBOUND DIRECTION

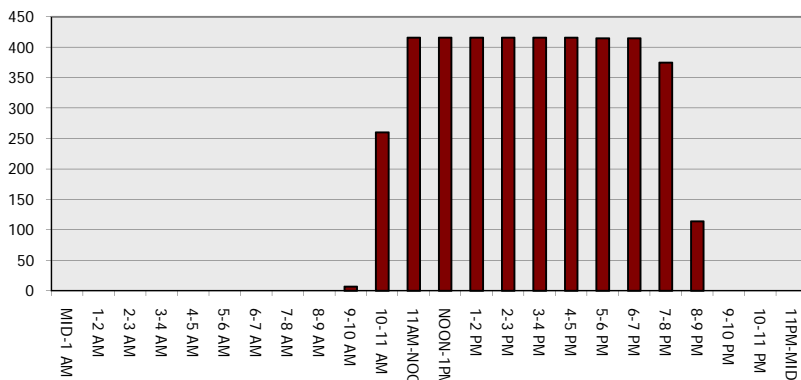
Main Route - Traffic Demand (Vehicles Per Hour)



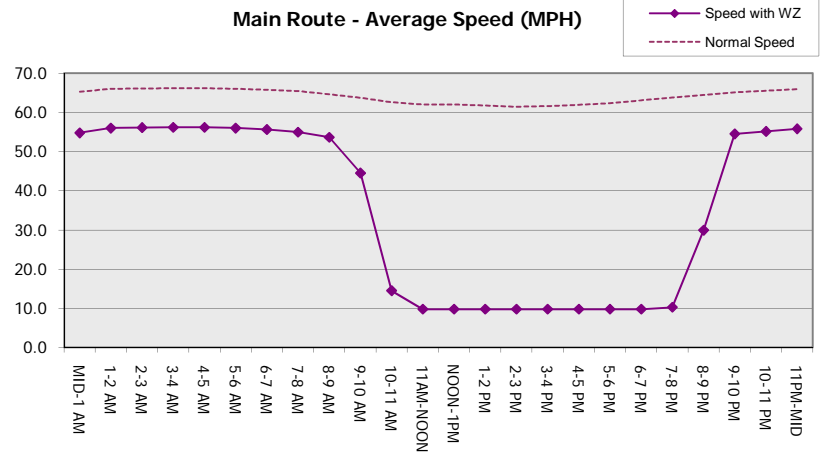
Main Route Average Delay Per Vehicle (Minutes)



Main Route - Average Queue Length (Vehicles)



Main Route - Average Speed (MPH)



USH 41: STH 44 TO STH 26 (WINNEBAGO COUNTY) CONTINUOUS (24 HOUR) CLOSURE NO DIVERSION ROUTE (MAX QUEUE METHOD)	AUGUST
	Analyzed for 2009 Construction Season

SUMMARY OF TRAFFIC MODEL OUTPUT

SUNDAY NORTHBOUND DIRECTION

TIME OF DAY	FLOWS AND CAPACITY IN VEH/HR						AVERAGE SPEEDS IN MPH			
	MAIN ROUTE		SITE CAPA CITY	FLOW		AV.DEL PER VEH (MINS)	AVERAGE QUEUE (VEH)	MAIN ROUTE		SITE
	DEMAND FLOW	PCT HEAVY		MAIN ROUTE	'DIVER TED'			WITHOUT WORK ZONE	WITH WORK ZONE	
MID-1 AM	217	0.0	1500	217	0	0.44	0	66.0	55.9	44.6
1-2 AM	141	0.0	1500	141	0	0.44	0	66.1	56.1	44.9
2-3 AM	104	0.0	1500	104	0	0.43	0	66.2	56.3	45.1
3-4 AM	66	0.0	1500	66	0	0.43	0	66.3	56.4	45.2
4-5 AM	77	0.0	1500	77	0	0.43	0	66.3	56.3	45.2
5-6 AM	215	0.0	1500	215	0	0.44	0	66.0	55.9	44.6
6-7 AM	221	0.0	1500	221	0	0.44	0	66.0	55.9	44.6
7-8 AM	300	0.0	1500	300	0	0.45	0	65.8	55.6	44.3
8-9 AM	498	0.0	1500	498	0	0.47	0	65.5	55.0	43.5
9-10 AM	832	0.0	1500	832	0	0.50	0	64.8	54.0	42.3
10-11 AM	1160	0.0	1500	1160	0	0.59	0	64.2	52.2	39.7
11AM-NOON	1442	0.0	1499	1442	0	0.95	0	63.7	46.4	32.0
NOON-1PM	1554	0.0	1499	1554	0	1.77	21	63.5	37.4	30.8
1-2 PM	1613	0.0	1500	1613	0	4.94	110	63.4	21.6	30.8
2-3 PM	1583	0.0	1499	1583	0	8.75	210	63.5	14.3	30.8
3-4 PM	1579	0.0	1500	1579	0	11.75	290	63.5	11.6	30.8
4-5 PM	1582	0.0	1500	1582	0	14.82+	373	63.5	10.2	30.8
5-6 PM	1513	0.0	1499	1488	25	16.24+	410	63.6	9.8	30.8
6-7 PM	1277	0.0	1499	1277	0	11.95+	302	64.0	11.7	30.9
7-8 PM	1057	0.0	1500	1057	0	1.43	39	64.4	41.0	39.5
8-9 PM	882	0.0	1500	882	0	0.51	0	64.8	53.8	42.1
9-10 PM	657	0.0	1500	657	0	0.49	0	65.1	54.5	42.9
10-11 PM	448	0.0	1500	448	0	0.47	0	65.6	55.1	43.7
11PM-MID	279	0.0	1500	279	0	0.45	0	65.9	55.7	44.3

+ INDICATES QUEUEING EXCEEDS USER-SPECIFIED MAXIMUM LIMIT

----- SITE BREAKDOWN DELAYS -----	
BREAKDOWN DURATION (MINS)	0
RANGE OF QUEUE DELAY - MIN (VEH-H) MAX	0.0
AV BREAKDOWNS PER DAY	0.00
AV QUEUE DELAY/DAY (VEH-H)	0.0
AV TOTAL DELAY/DAY (VEH-H)	0.0

----- SITE ACCIDENT DELAYS -----	
BREAKDOWN DURATION (MINS)	0
RANGE OF QUEUE DELAY - MIN (VEH-H) MAX	0
AV BREAKDOWNS PER DAY	0
AV QUEUE DELAY/DAY (VEH-H)	0
AV TOTAL DELAY/DAY (VEH-H)	0

AVERAGE ACCIDENT NUMBERS (PIA/DAY)	
MAIN ROUTE WITHOUT WORKS	0.0083
MAIN ROUTE WITH WORKS	0.0070
'DIVERSION'	0.0000

PIA: Personal Injury Accidents

ECONOMIC IMPACT ON ROAD USERS	
ROAD USER COSTS PER DAY	\$31,824
CONGESTED HOURS PER DAY*	3

*Delays Exceeding User-Specified Maximum

**USH 41: STH 44 TO STH 26 (WINNEBAGO COUNTY)
CONTINUOUS (24 HOUR) CLOSURE
NO DIVERSION ROUTE (MAX QUEUE METHOD)**

AUGUST
Analyzed for 2009
Construction Season

GRAPHICAL REPRESENTATION OF TRAFFIC MODEL INPUT AND OUTPUT
SUNDAY NORTHBOUND DIRECTION

