

USH 41: STH 44 TO STH 26 (WINNEBAGO COUNTY) CONTINUOUS (24 HOUR) CLOSURE NO DIVERSION ROUTE (MAX QUEUE METHOD)	AUGUST
	Analyzed for 2009 Construction Season

SUMMARY OF TRAFFIC MODEL OUTPUT

SATURDAY SOUTHBOUND DIRECTION

TIME OF DAY	FLOWS AND CAPACITY IN VEH/HR						AVERAGE SPEEDS IN MPH			
	MAIN ROUTE		SITE CAPA CITY	FLOW		AV.DEL PER VEH (MINS)	AVERAGE QUEUE (VEH)	MAIN ROUTE		SITE
	DEMAND FLOW	PCT HEAVY		MAIN ROUTE	'DIVER TED'			WITHOUT WORK ZONE	WITH WORK ZONE	
MID-1 AM	248	0.0	1500	248	0	0.45	0	66.0	55.8	44.5
1-2 AM	157	0.0	1500	157	0	0.44	0	66.1	56.1	44.8
2-3 AM	130	0.0	1500	130	0	0.44	0	66.1	56.2	45.0
3-4 AM	105	0.0	1500	105	0	0.43	0	66.2	56.3	45.1
4-5 AM	182	0.0	1500	182	0	0.44	0	66.1	56.0	44.8
5-6 AM	295	0.0	1500	295	0	0.45	0	65.8	55.6	44.3
6-7 AM	529	0.0	1500	529	0	0.47	0	65.4	54.9	43.4
7-8 AM	866	0.0	1500	866	0	0.51	0	64.8	53.9	42.2
8-9 AM	1328	0.0	1499	1328	0	0.80	0	63.9	48.6	34.9
9-10 AM	1573	0.0	1499	1573	0	1.70	21	63.5	38.1	30.8
10-11 AM	1815	0.0	1500	1815	0	8.40	220	63.0	15.0	30.8
11AM-NOON	1877	0.0	1499	1503	374	16.39+	415	62.9	9.7	30.8
NOON-1PM	1853	0.0	1500	1502	351	16.39+	415	62.9	9.7	30.8
1-2 PM	1766	0.0	1500	1502	264	16.39+	415	63.1	9.7	30.8
2-3 PM	1741	0.0	1500	1502	239	16.39+	415	63.2	9.7	30.8
3-4 PM	1602	0.0	1500	1514	88	16.33+	413	63.4	9.7	30.8
4-5 PM	1519	0.0	1500	1493	26	16.26+	410	63.5	9.8	30.8
5-6 PM	1329	0.0	1499	1329	0	13.18+	331	63.9	10.9	30.8
6-7 PM	1082	0.0	1499	1082	0	2.06	72	64.4	35.4	38.3
7-8 PM	958	0.0	1500	958	0	0.52	0	64.6	53.6	41.8
8-9 PM	829	0.0	1500	829	0	0.50	0	64.8	54.0	42.3
9-10 PM	796	0.0	1500	796	0	0.50	0	64.9	54.1	42.4
10-11 PM	883	0.0	1500	883	0	0.51	0	64.8	53.8	42.1
11PM-MID	901	0.0	1500	901	0	0.51	0	64.7	53.8	42.0

+ INDICATES QUEUEING EXCEEDS USER-SPECIFIED MAXIMUM LIMIT

----- SITE BREAKDOWN DELAYS -----	
BREAKDOWN DURATION (MINS)	0
RANGE OF QUEUE DELAY - MIN (VEH-H) MAX	0.0
AV BREAKDOWNS PER DAY	0.00
AV QUEUE DELAY/DAY (VEH-H)	0.0
AV TOTAL DELAY/DAY (VEH-H)	0.0

----- SITE ACCIDENT DELAYS -----	
BREAKDOWN DURATION (MINS)	0
RANGE OF QUEUE DELAY - MIN (VEH-H) MAX	0
AV BREAKDOWNS PER DAY	0
AV QUEUE DELAY/DAY (VEH-H)	0
AV TOTAL DELAY/DAY (VEH-H)	0

AVERAGE ACCIDENT NUMBERS (PIA/DAY)	
MAIN ROUTE WITHOUT WORKS	0.0105
MAIN ROUTE WITH WORKS	0.0084
'DIVERSION'	0.0013
PIA: Personal Injury Accidents	
IMPACTS ON ROAD USERS	
ROAD USER COSTS PER DAY	\$59,490
CONGESTED HOURS PER DAY*	7

*Delays Exceeding User-Specified Maximum

**USH 41: STH 44 TO STH 26 (WINNEBAGO COUNTY)
CONTINUOUS (24 HOUR) CLOSURE
NO DIVERSION ROUTE (MAX QUEUE METHOD)**

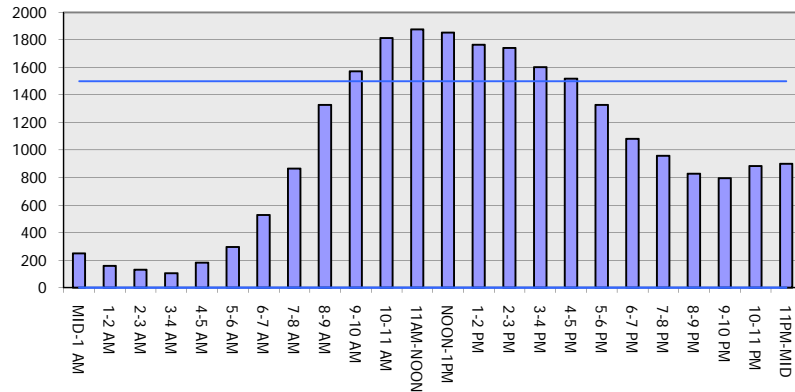
AUGUST

Analyzed for 2009
Construction Season

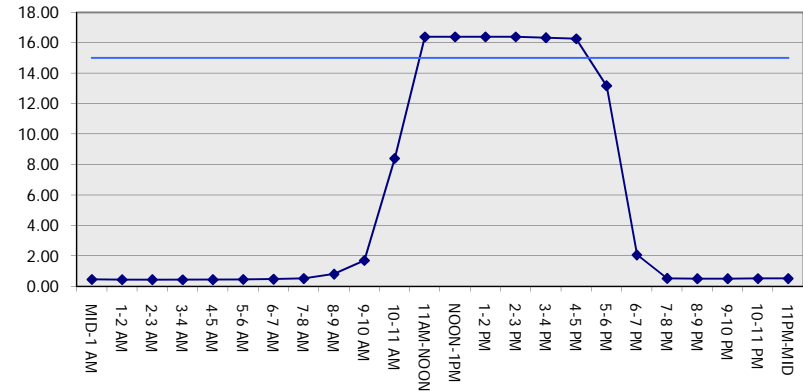
GRAPHICAL REPRESENTATION OF TRAFFIC MODEL INPUT AND OUTPUT

SATURDAY SOUTHBOUND DIRECTION

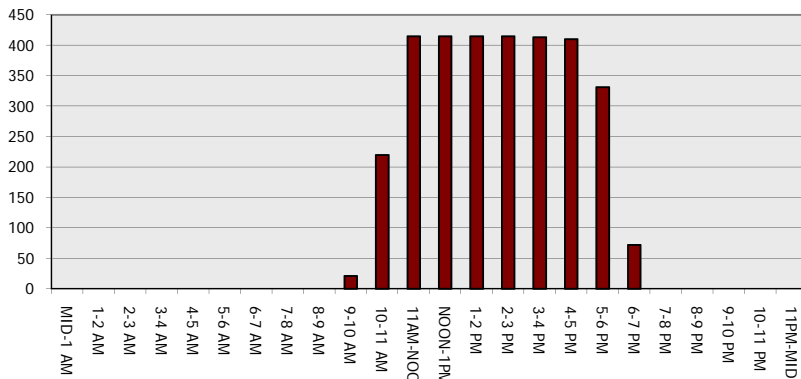
Main Route - Traffic Demand (Vehicles Per Hour)



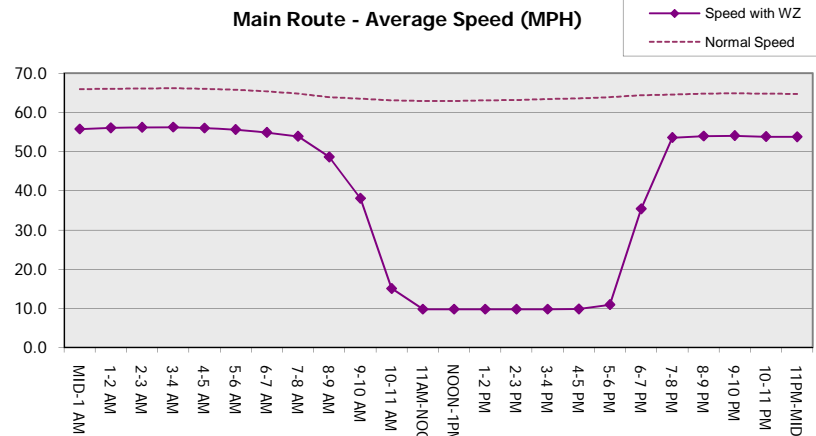
Main Route Average Delay Per Vehicle (Minutes)



Main Route - Average Queue Length (Vehicles)



Main Route - Average Speed (MPH)



USH 41: STH 44 TO STH 26 (WINNEBAGO COUNTY) CONTINUOUS (24 HOUR) CLOSURE NO DIVERSION ROUTE (MAX QUEUE METHOD)	AUGUST
	Analyzed for 2009 Construction Season

SUMMARY OF TRAFFIC MODEL OUTPUT

SATURDAY NORTHBOUND DIRECTION

TIME OF DAY	FLOWS AND CAPACITY IN VEH/HR							AVERAGE SPEEDS IN MPH		
	MAIN ROUTE		SITE CAPA CITY	FLOW		AV.DEL PER VEH (MINS)	AVERAGE QUEUE (VEH)	MAIN ROUTE		SITE
	DEMAND FLOW	PCT HEAVY		MAIN ROUTE	'DIVER TED'			WITHOUT WORK ZONE	WITH WORK ZONE	
MID-1 AM	288	0.0	1500	288	0	0.45	0	65.8	55.6	44.3
1-2 AM	192	0.0	1500	192	0	0.44	0	66.0	56.0	44.7
2-3 AM	129	0.0	1500	129	0	0.43	0	66.1	56.2	45.0
3-4 AM	121	0.0	1500	121	0	0.43	0	66.1	56.2	45.0
4-5 AM	149	0.0	1500	149	0	0.44	0	66.1	56.1	44.9
5-6 AM	304	0.0	1500	304	0	0.45	0	65.8	55.6	44.3
6-7 AM	447	0.0	1500	447	0	0.47	0	65.6	55.1	43.7
7-8 AM	700	0.0	1500	700	0	0.49	0	65.1	54.4	42.8
8-9 AM	992	0.0	1500	992	0	0.52	0	64.5	53.5	41.7
9-10 AM	1358	0.0	1499	1358	0	0.84	0	63.8	48.1	34.2
10-11 AM	1728	0.0	1499	1728	0	4.02	98	63.2	24.6	30.8
11AM-NOON	1861	0.0	1500	1672	189	14.31+	364	62.9	10.5	30.8
NOON-1PM	1879	0.0	1500	1501	377	16.39+	415	62.9	9.7	30.8
1-2 PM	1896	0.0	1500	1501	395	16.39+	415	62.8	9.7	30.8
2-3 PM	1844	0.0	1500	1501	343	16.39+	415	63.0	9.7	30.8
3-4 PM	1798	0.0	1500	1501	297	16.39+	415	63.0	9.7	30.8
4-5 PM	1714	0.0	1500	1501	213	16.39+	415	63.2	9.7	30.8
5-6 PM	1548	0.0	1500	1491	57	16.16+	408	63.5	9.8	30.8
6-7 PM	1179	0.0	1499	1179	0	9.53	256	64.2	13.8	32.8
7-8 PM	898	0.0	1500	898	0	0.64	5	64.7	51.5	42.0
8-9 PM	784	0.0	1500	784	0	0.50	0	64.9	54.1	42.5
9-10 PM	673	0.0	1500	673	0	0.49	0	65.1	54.5	42.8
10-11 PM	552	0.0	1500	552	0	0.48	0	65.3	54.8	43.3
11PM-MID	384	0.0	1500	384	0	0.46	0	65.6	55.3	44.0

+ INDICATES QUEUEING EXCEEDS USER-SPECIFIED MAXIMUM LIMIT

----- SITE BREAKDOWN DELAYS -----	
BREAKDOWN DURATION (MINS)	0
RANGE OF QUEUE DELAY - MIN (VEH-H) MAX	0.0
AV BREAKDOWNS PER DAY	0.00
AV QUEUE DELAY/DAY (VEH-H)	0.0
AV TOTAL DELAY/DAY (VEH-H)	0.0

----- SITE ACCIDENT DELAYS -----	
BREAKDOWN DURATION (MINS)	0
RANGE OF QUEUE DELAY - MIN (VEH-H) MAX	0
AV BREAKDOWNS PER DAY	0
AV QUEUE DELAY/DAY (VEH-H)	0
AV TOTAL DELAY/DAY (VEH-H)	0

AVERAGE ACCIDENT NUMBERS (PIA/DAY)	
MAIN ROUTE WITHOUT WORKS	0.0101
MAIN ROUTE WITH WORKS	0.0078
'DIVERSION'	0.0019

PIA: Personal Injury Accidents

ECONOMIC IMPACT ON ROAD USERS	
ROAD USER COSTS PER DAY	\$62,962
CONGESTED HOURS PER DAY*	7

*Delays Exceeding User-Specified Maximum

**USH 41: STH 44 TO STH 26 (WINNEBAGO COUNTY)
CONTINUOUS (24 HOUR) CLOSURE
NO DIVERSION ROUTE (MAX QUEUE METHOD)**

AUGUST
Analyzed for 2009
Construction Season

GRAPHICAL REPRESENTATION OF TRAFFIC MODEL INPUT AND OUTPUT
SATURDAY NORTHBOUND DIRECTION

