

<b>USH 41: STH 114 TO BREEZEWOOD LN/BELL ST (WINNEBAGO COUNTY)</b> <b>CONTINUOUS (24 HOUR) CLOSURE</b> <b>NO DIVERSION ROUTE (MAX QUEUE METHOD)</b>	<b>OCTOBER</b>
	Analyzed for 2009 Construction Season

**SUMMARY OF TRAFFIC MODEL OUTPUT**

SATURDAY SOUTHBOUND DIRECTION

TIME OF DAY	FLOWS AND CAPACITY IN VEH/HR						AVERAGE SPEEDS IN MPH			
	MAIN ROUTE		SITE CAPA CITY	FLOW		AV.DEL PER VEH (MINS)	AVERAGE QUEUE (VEH)	MAIN ROUTE		SITE
	DEMAND FLOW	PCT HEAVY		MAIN ROUTE	'DIVER TED'			WITHOUT WORK ZONE	WITH WORK ZONE	
MID-1 AM	405	0.0	3000	405	0	0.36	0	70.2	54.0	49.7
1-2 AM	258	0.0	3000	258	0	0.36	0	70.2	54.0	49.7
2-3 AM	225	0.0	3000	225	0	0.36	0	70.2	54.0	49.7
3-4 AM	190	0.0	3000	190	0	0.36	0	70.2	54.0	49.7
4-5 AM	292	0.0	3000	292	0	0.36	0	70.2	54.0	49.7
5-6 AM	444	0.0	3000	444	0	0.36	0	70.2	54.0	49.7
6-7 AM	907	0.0	3000	907	0	0.35	0	69.6	53.8	49.7
7-8 AM	1577	0.0	3000	1577	0	0.34	0	68.7	53.7	49.7
8-9 AM	1705	0.0	3000	1705	0	0.34	0	68.6	53.7	49.7
9-10 AM	1849	0.0	3000	1849	0	0.34	0	68.4	53.7	49.7
10-11 AM	2029	0.0	3000	2029	0	0.33	0	68.2	53.7	49.7
11AM-NOON	2081	0.0	3000	2081	0	0.33	0	68.1	53.6	49.7
NOON-1PM	2169	0.0	3000	2169	0	0.33	0	68.1	53.6	49.7
1-2 PM	2215	0.0	3000	2215	0	0.33	0	68.0	53.6	49.7
2-3 PM	2168	0.0	3000	2168	0	0.33	0	68.1	53.6	49.7
3-4 PM	2172	0.0	3000	2172	0	0.33	0	68.1	53.6	49.7
4-5 PM	2240	0.0	3000	2240	0	0.33	0	67.9	53.6	49.7
5-6 PM	2077	0.0	3000	2077	0	0.33	0	68.1	53.6	49.7
6-7 PM	1854	0.0	3000	1854	0	0.34	0	68.4	53.7	49.7
7-8 PM	1543	0.0	3000	1543	0	0.34	0	68.8	53.7	49.7
8-9 PM	1388	0.0	3000	1388	0	0.34	0	69.0	53.8	49.7
9-10 PM	1377	0.0	3000	1377	0	0.34	0	69.0	53.8	49.7
10-11 PM	1001	0.0	3000	1001	0	0.35	0	69.5	53.8	49.7
11PM-MID	705	0.0	3000	705	0	0.36	0	69.9	53.9	49.7

*----- SITE BREAKDOWN DELAYS -----*	
BREAKDOWN DURATION (MINS)	0
RANGE OF QUEUE DELAY - MIN (VEH-H) MAX	0.0
AV BREAKDOWNS PER DAY	0.00
AV QUEUE DELAY/DAY (VEH-H)	0.0
AV TOTAL DELAY/DAY (VEH-H)	0.0

*----- SITE ACCIDENT DELAYS -----*	
BREAKDOWN DURATION (MINS)	0
RANGE OF QUEUE DELAY - MIN (VEH-H) MAX	0
AV BREAKDOWNS PER DAY	0
AV QUEUE DELAY/DAY (VEH-H)	0
AV TOTAL DELAY/DAY (VEH-H)	0

AVERAGE ACCIDENT NUMBERS (PIA/DAY)	
MAIN ROUTE WITHOUT WORKS	0.0073
MAIN ROUTE WITH WORKS	0.0051
'DIVERSION'	0.0000
PIA: Personal Injury Accidents	
IMPACTS ON ROAD USERS	
ROAD USER COSTS PER DAY	\$2,729
CONGESTED HOURS PER DAY*	0

\*Delays Exceeding User-Specified Maximum

**USH 41: STH 114 TO BREEZEWOOD LN/BELL ST (WINNEBAGO COUNTY)  
CONTINUOUS (24 HOUR) CLOSURE  
NO DIVERSION ROUTE (MAX QUEUE METHOD)**

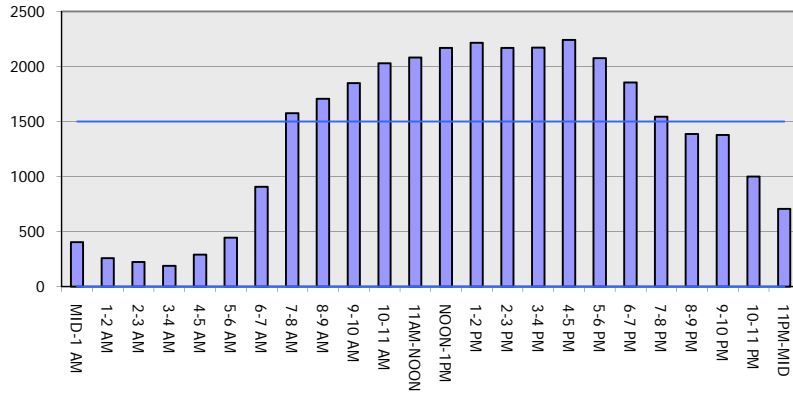
**OCTOBER**

Analyzed for 2009  
Construction Season

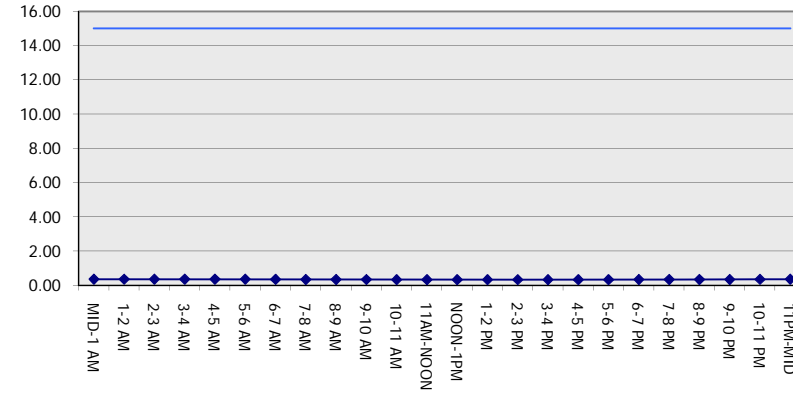
**GRAPHICAL REPRESENTATION OF TRAFFIC MODEL INPUT AND OUTPUT**

**SATURDAY SOUTHBOUND DIRECTION**

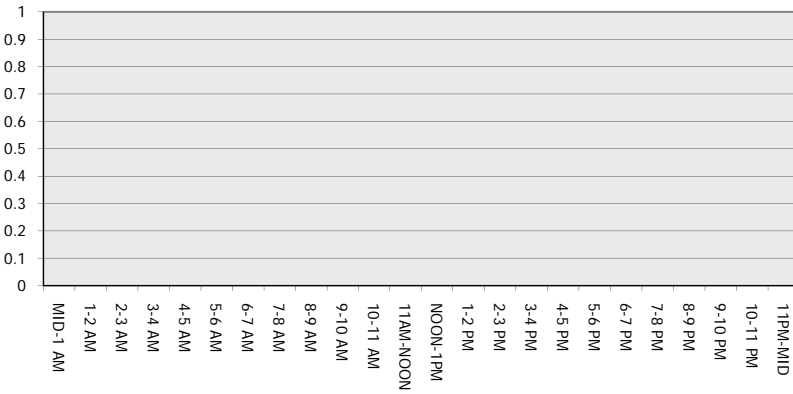
**Main Route - Traffic Demand (Vehicles Per Hour)**



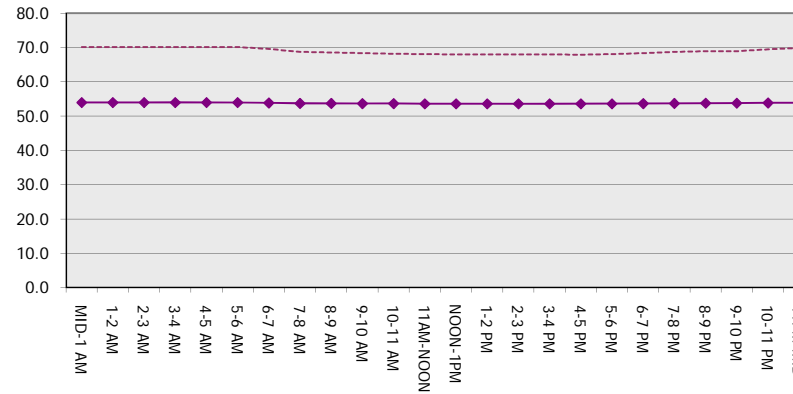
**Main Route Average Delay Per Vehicle (Minutes)**



**Main Route - Average Queue Length (Vehicles)**



**Main Route - Average Speed (MPH)**



<b>USH 41: STH 114 TO BREEZEWOOD LN/BELL ST (WINNEBAGO COUNTY)</b> <b>CONTINUOUS (24 HOUR) CLOSURE</b> <b>NO DIVERSION ROUTE (MAX QUEUE METHOD)</b>	<b>OCTOBER</b>
	Analyzed for 2009 Construction Season

**SUMMARY OF TRAFFIC MODEL OUTPUT**

**SATURDAY NORTHBOUND DIRECTION**

TIME OF DAY	FLOWS AND CAPACITY IN VEH/HR							AVERAGE SPEEDS IN MPH		
	MAIN ROUTE		SITE CAPA CITY	FLOW		AV.DEL PER VEH (MINS)	AVERAGE QUEUE (VEH)	MAIN ROUTE		SITE
	DEMAND FLOW	PCT HEAVY		MAIN ROUTE	'DIVER TED'			WITHOUT WORK ZONE	WITH WORK ZONE	
MID-1 AM	407	0.0	3000	407	0	0.36	0	70.2	54.0	49.7
1-2 AM	249	0.0	3000	249	0	0.36	0	70.2	54.0	49.7
2-3 AM	233	0.0	3000	233	0	0.36	0	70.2	54.0	49.7
3-4 AM	185	0.0	3000	185	0	0.36	0	70.2	54.0	49.7
4-5 AM	212	0.0	3000	212	0	0.36	0	70.2	54.0	49.7
5-6 AM	424	0.0	3000	424	0	0.36	0	70.2	54.0	49.7
6-7 AM	602	0.0	3000	602	0	0.36	0	70.0	53.9	49.7
7-8 AM	1106	0.0	3000	1106	0	0.35	0	69.4	53.8	49.7
8-9 AM	1482	0.0	3000	1482	0	0.34	0	68.9	53.7	49.7
9-10 AM	1839	0.0	3000	1839	0	0.34	0	68.4	53.7	49.7
10-11 AM	2310	0.0	3000	2310	0	0.33	0	67.9	53.6	49.7
11AM-NOON	2599	0.0	3000	2599	0	0.47	0	67.5	49.1	44.5
NOON-1PM	2729	0.0	3000	2729	0	0.55	0	67.3	46.6	41.9
1-2 PM	2568	0.0	3000	2568	0	0.45	0	67.6	49.7	45.2
2-3 PM	2530	0.0	3000	2530	0	0.42	0	67.6	50.4	46.1
3-4 PM	2555	0.0	3000	2555	0	0.44	0	67.6	49.9	45.5
4-5 PM	2737	0.0	3000	2737	0	0.56	0	67.3	46.5	41.7
5-6 PM	2548	0.0	3000	2548	0	0.43	0	67.6	50.1	45.7
6-7 PM	2153	0.0	3000	2153	0	0.33	0	68.1	53.6	49.7
7-8 PM	1630	0.0	3000	1630	0	0.34	0	68.7	53.7	49.7
8-9 PM	1376	0.0	3000	1376	0	0.34	0	69.0	53.8	49.7
9-10 PM	1128	0.0	3000	1128	0	0.35	0	69.3	53.8	49.7
10-11 PM	858	0.0	3000	858	0	0.35	0	69.7	53.8	49.7
11PM-MID	606	0.0	3000	606	0	0.36	0	70.0	53.9	49.7

*----- SITE BREAKDOWN DELAYS -----*	
BREAKDOWN DURATION (MINS)	0
RANGE OF QUEUE DELAY - MIN (VEH-H) MAX	0.0
AV BREAKDOWNS PER DAY	0.00
AV QUEUE DELAY/DAY (VEH-H)	0.0
AV TOTAL DELAY/DAY (VEH-H)	0.0

*----- SITE ACCIDENT DELAYS -----*	
BREAKDOWN DURATION (MINS)	0
RANGE OF QUEUE DELAY - MIN (VEH-H) MAX	0
AV BREAKDOWNS PER DAY	0
AV QUEUE DELAY/DAY (VEH-H)	0
AV TOTAL DELAY/DAY (VEH-H)	0

AVERAGE ACCIDENT NUMBERS (PIA/DAY)	
MAIN ROUTE WITHOUT WORKS	0.0078
MAIN ROUTE WITH WORKS	0.0055
'DIVERSION'	0.0000

PIA: Personal Injury Accidents

ECONOMIC IMPACT ON ROAD USERS	
ROAD USER COSTS PER DAY	\$3,561
CONGESTED HOURS PER DAY*	0

\*Delays Exceeding User-Specified Maximum

**USH 41: STH 114 TO BREEZEWOOD LN/BELL ST (WINNEBAGO COUNTY)  
CONTINUOUS (24 HOUR) CLOSURE  
NO DIVERSION ROUTE (MAX QUEUE METHOD)**

**OCTOBER**

Analyzed for 2009  
Construction Season

**GRAPHICAL REPRESENTATION OF TRAFFIC MODEL INPUT AND OUTPUT  
SATURDAY NORTHBOUND DIRECTION**

