

**USH 41: USH 10 TO STH 114 (WINNEBAGO COUNTY)
CONTINUOUS (24 HOUR) CLOSURE
NO DIVERSION ROUTE (MAX QUEUE METHOD)**

OCTOBER

Analyzed for 2009
Construction Season

SUMMARY OF TRAFFIC MODEL OUTPUT

SUNDAY SOUTHBOUND DIRECTION

TIME OF DAY	FLOWS AND CAPACITY IN VEH/HR						AVERAGE SPEEDS IN MPH			
	MAIN ROUTE		SITE CAPA CITY	FLOW		AV.DEL PER VEH (MINS)	AVERAGE QUEUE (VEH)	MAIN ROUTE		SITE
	DEMAND FLOW	PCT HEAVY		MAIN ROUTE	'DIVER TED'			WITHOUT WORK ZONE	WITH WORK ZONE	
MID-1 AM	564	0.0	3000	564	0	0.36	0	70.0	61.7	49.7
1-2 AM	321	0.0	3000	321	0	0.36	0	70.2	61.8	49.7
2-3 AM	293	0.0	3000	293	0	0.36	0	70.2	61.8	49.7
3-4 AM	266	0.0	3000	266	0	0.36	0	70.2	61.8	49.7
4-5 AM	238	0.0	3000	238	0	0.36	0	70.2	61.8	49.7
5-6 AM	286	0.0	3000	286	0	0.36	0	70.2	61.8	49.7
6-7 AM	442	0.0	3000	442	0	0.36	0	70.2	61.8	49.7
7-8 AM	634	0.0	3000	634	0	0.36	0	69.9	61.7	49.7
8-9 AM	970	0.0	3000	970	0	0.35	0	69.6	61.5	49.7
9-10 AM	1560	0.0	3000	1560	0	0.34	0	68.8	61.0	49.7
10-11 AM	2095	0.0	3000	2095	0	0.33	0	68.1	60.7	49.7
11AM-NOON	2598	0.0	3000	2598	0	0.47	0	67.5	57.8	44.6
NOON-1PM	2776	0.0	3000	2776	0	0.58	0	67.3	55.6	41.0
1-2 PM	2937	0.0	2999	2937	0	0.69	0	67.1	53.8	38.3
2-3 PM	3229	0.0	2999	3229	0	2.25	96	66.7	36.9	37.3
3-4 PM	3531	0.0	3000	3531	0	8.91	480	66.3	16.3	37.3
4-5 PM	3702	0.0	2999	3042	659	16.13+	852	65.6	11.7	37.3
5-6 PM	3377	0.0	3000	3013	364	16.11+	848	66.5	11.7	37.3
6-7 PM	3019	0.0	3000	2945	74	15.61+	820	67.0	11.9	37.3
7-8 PM	2082	0.0	2999	2082	0	4.52	364	68.1	26.1	44.0
8-9 PM	1368	0.0	3000	1368	0	0.34	0	69.1	61.2	49.7
9-10 PM	917	0.0	3000	917	0	0.35	0	69.6	61.5	49.7
10-11 PM	628	0.0	3000	628	0	0.36	0	69.9	61.7	49.7
11PM-MID	362	0.0	3000	362	0	0.36	0	70.2	61.8	49.7

+ INDICATES QUEUEING EXCEEDS USER-SPECIFIED MAXIMUM LIMIT

----- SITE BREAKDOWN DELAYS -----	
BREAKDOWN DURATION (MINS)	0
RANGE OF QUEUE DELAY - MIN (VEH-H) MAX	0.0
AV BREAKDOWNS PER DAY	0.00
AV QUEUE DELAY/DAY (VEH-H)	0.0
AV TOTAL DELAY/DAY (VEH-H)	0.0

----- SITE ACCIDENT DELAYS -----	
BREAKDOWN DURATION (MINS)	0
RANGE OF QUEUE DELAY - MIN (VEH-H) MAX	0
AV BREAKDOWNS PER DAY	0
AV QUEUE DELAY/DAY (VEH-H)	0
AV TOTAL DELAY/DAY (VEH-H)	0

AVERAGE ACCIDENT NUMBERS (PIA/DAY)	
MAIN ROUTE WITHOUT WORKS	0.0188
MAIN ROUTE WITH WORKS	0.0159
'DIVERSION'	0.0013
PIA: Personal Injury Accidents	
IMPACTS ON ROAD USERS	
ROAD USER COSTS PER DAY	\$62,444
CONGESTED HOURS PER DAY*	3

*Delays Exceeding User-Specified Maximum

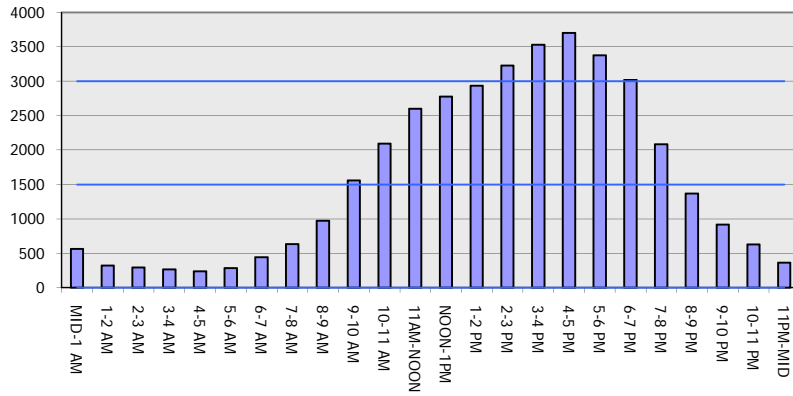
**USH 41: USH 10 TO STH 114 (WINNEBAGO COUNTY)
CONTINUOUS (24 HOUR) CLOSURE
NO DIVERSION ROUTE (MAX QUEUE METHOD)**

OCTOBER

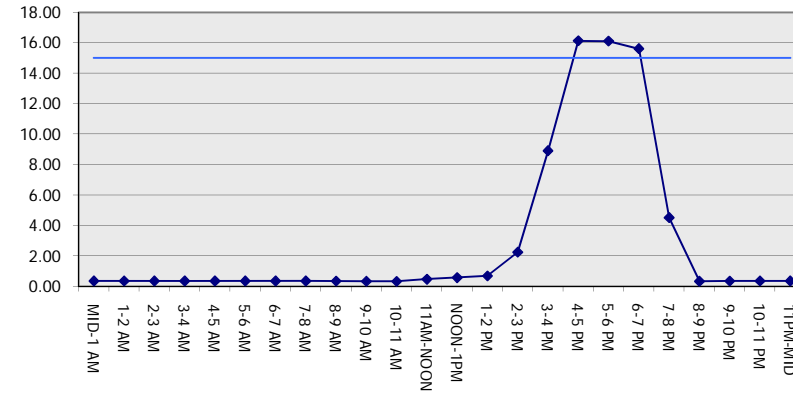
Analyzed for 2009
Construction Season

GRAPHICAL REPRESENTATION OF TRAFFIC MODEL INPUT AND OUTPUT
SUNDAY SOUTHBOUND DIRECTION

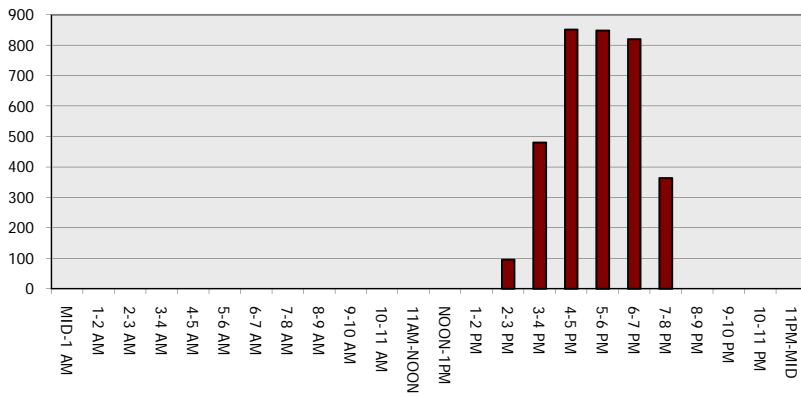
Main Route - Traffic Demand (Vehicles Per Hour)



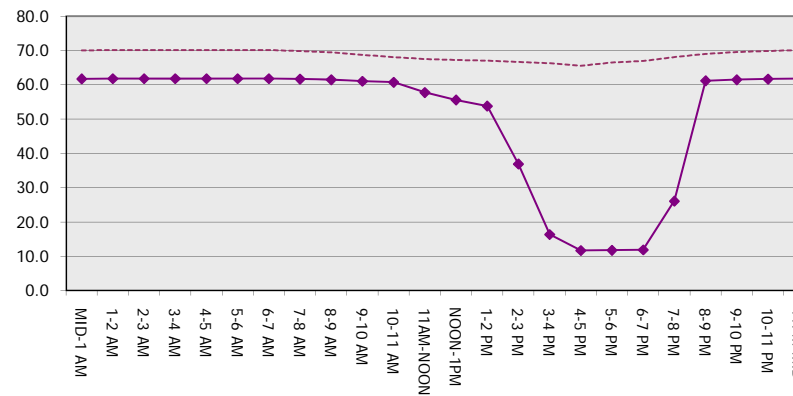
Main Route Average Delay Per Vehicle (Minutes)



Main Route - Average Queue Length (Vehicles)



Main Route - Average Speed (MPH)



USH 41: USH 10 TO STH 114 (WINNEBAGO COUNTY) CONTINUOUS (24 HOUR) CLOSURE NO DIVERSION ROUTE (MAX QUEUE METHOD)	OCTOBER
	Analyzed for 2009 Construction Season

SUMMARY OF TRAFFIC MODEL OUTPUT

SUNDAY NORTHBOUND DIRECTION

TIME OF DAY	FLOWS AND CAPACITY IN VEH/HR							AVERAGE SPEEDS IN MPH		
	MAIN ROUTE		SITE CAPA CITY	FLOW		AV.DEL PER VEH (MINS)	AVERAGE QUEUE (VEH)	MAIN ROUTE		SITE
	DEMAND FLOW	PCT HEAVY		MAIN ROUTE	'DIVER TED'			WITHOUT WORK ZONE	WITH WORK ZONE	
MID-1 AM	475	0.0	3000	475	0	0.36	0	70.2	61.8	49.7
1-2 AM	331	0.0	3000	331	0	0.36	0	70.2	61.8	49.7
2-3 AM	269	0.0	3000	269	0	0.36	0	70.2	61.8	49.7
3-4 AM	176	0.0	3000	176	0	0.36	0	70.2	61.8	49.7
4-5 AM	169	0.0	3000	169	0	0.36	0	70.2	61.8	49.7
5-6 AM	312	0.0	3000	312	0	0.36	0	70.2	61.8	49.7
6-7 AM	423	0.0	3000	423	0	0.36	0	70.2	61.8	49.7
7-8 AM	761	0.0	3000	761	0	0.35	0	69.8	61.6	49.7
8-9 AM	1584	0.0	3000	1584	0	0.34	0	68.7	61.0	49.7
9-10 AM	2388	0.0	3000	2388	0	0.33	0	67.8	60.5	49.7
10-11 AM	2305	0.0	3000	2305	0	0.33	0	67.9	60.6	49.7
11AM-NOON	2474	0.0	3000	2474	0	0.38	0	67.7	59.4	47.4
NOON-1PM	2634	0.0	3000	2634	0	0.49	0	67.4	57.3	43.8
1-2 PM	2428	0.0	3000	2428	0	0.36	0	67.7	60.0	48.6
2-3 PM	2502	0.0	3000	2502	0	0.40	0	67.6	59.0	46.8
3-4 PM	2632	0.0	3000	2632	0	0.49	0	67.4	57.3	43.8
4-5 PM	2622	0.0	3000	2622	0	0.48	0	67.5	57.4	44.0
5-6 PM	2520	0.0	3000	2520	0	0.42	0	67.6	58.7	46.3
6-7 PM	2222	0.0	3000	2222	0	0.33	0	68.0	60.6	49.7
7-8 PM	1859	0.0	3000	1859	0	0.34	0	68.4	60.9	49.7
8-9 PM	1332	0.0	3000	1332	0	0.35	0	69.1	61.2	49.7
9-10 PM	995	0.0	3000	995	0	0.35	0	69.5	61.4	49.7
10-11 PM	689	0.0	3000	689	0	0.36	0	69.9	61.7	49.7
11PM-MID	385	0.0	3000	385	0	0.36	0	70.2	61.8	49.7

----- SITE BREAKDOWN DELAYS -----	
BREAKDOWN DURATION (MINS)	0
RANGE OF QUEUE DELAY - MIN (VEH-H) MAX	0.0
AV BREAKDOWNS PER DAY	0.00
AV QUEUE DELAY/DAY (VEH-H)	0.0
AV TOTAL DELAY/DAY (VEH-H)	0.0

----- SITE ACCIDENT DELAYS -----	
BREAKDOWN DURATION (MINS)	0
RANGE OF QUEUE DELAY - MIN (VEH-H) MAX	0
AV BREAKDOWNS PER DAY	0
AV QUEUE DELAY/DAY (VEH-H)	0
AV TOTAL DELAY/DAY (VEH-H)	0

AVERAGE ACCIDENT NUMBERS (PIA/DAY)	
MAIN ROUTE WITHOUT WORKS	0.0170
MAIN ROUTE WITH WORKS	0.0147
'DIVERSION'	0.0000

PIA: Personal Injury Accidents

ECONOMIC IMPACT ON ROAD USERS	
ROAD USER COSTS PER DAY	\$3,840
CONGESTED HOURS PER DAY*	0

*Delays Exceeding User-Specified Maximum

**USH 41: USH 10 TO STH 114 (WINNEBAGO COUNTY)
CONTINUOUS (24 HOUR) CLOSURE
NO DIVERSION ROUTE (MAX QUEUE METHOD)**

OCTOBER

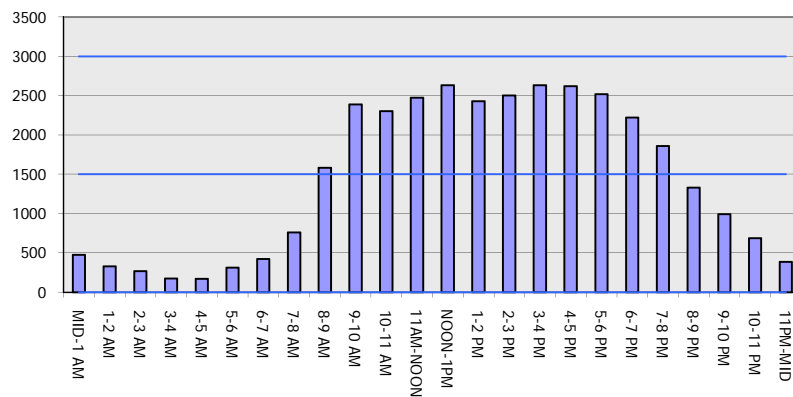
Analyzed for 2009
Construction Season

GRAPHICAL REPRESENTATION OF TRAFFIC MODEL INPUT AND OUTPUT

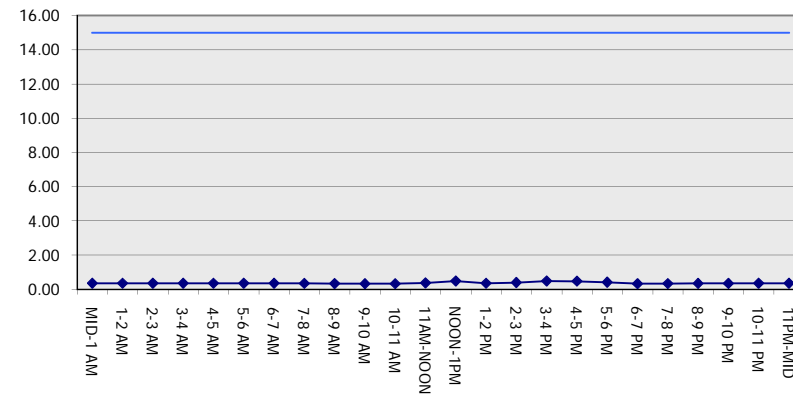
SUNDAY

NORTHBOUND DIRECTION

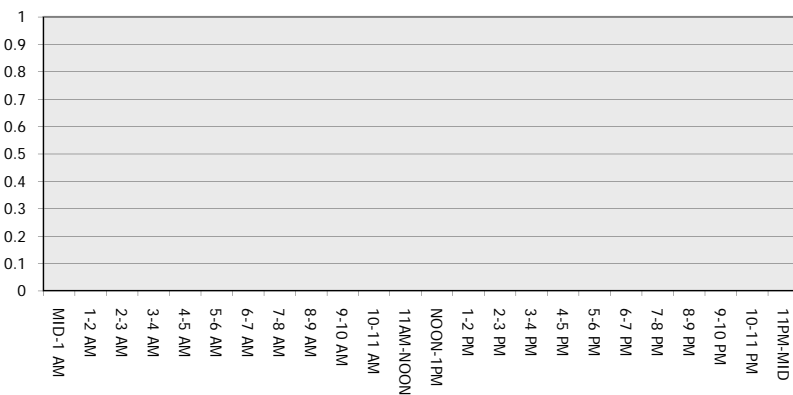
Main Route - Traffic Demand (Vehicles Per Hour)



Main Route Average Delay Per Vehicle (Minutes)



Main Route - Average Queue Length (Vehicles)



Main Route - Average Speed (MPH)

