

USH 41: USH 10 TO STH 114 (WINNEBAGO COUNTY) CONTINUOUS (24 HOUR) CLOSURE NO DIVERSION ROUTE (MAX QUEUE METHOD)	OCTOBER
	Analyzed for 2009 Construction Season

SUMMARY OF TRAFFIC MODEL OUTPUT

SATURDAY SOUTHBOUND DIRECTION

TIME OF DAY	FLOWS AND CAPACITY IN VEH/HR						AVERAGE SPEEDS IN MPH			
	MAIN ROUTE		SITE CAPA CITY	FLOW		AV.DEL PER VEH (MINS)	AVERAGE QUEUE (VEH)	MAIN ROUTE		SITE
	DEMAND FLOW	PCT HEAVY		MAIN ROUTE	'DIVER TED'			WITHOUT WORK ZONE	WITH WORK ZONE	
MID-1 AM	485	0.0	3000	485	0	0.36	0	70.1	61.8	49.7
1-2 AM	310	0.0	3000	310	0	0.36	0	70.2	61.8	49.7
2-3 AM	271	0.0	3000	271	0	0.36	0	70.2	61.8	49.7
3-4 AM	229	0.0	3000	229	0	0.36	0	70.2	61.8	49.7
4-5 AM	350	0.0	3000	350	0	0.36	0	70.2	61.8	49.7
5-6 AM	532	0.0	3000	532	0	0.36	0	70.0	61.7	49.7
6-7 AM	1087	0.0	3000	1087	0	0.35	0	69.4	61.4	49.7
7-8 AM	1890	0.0	3000	1890	0	0.34	0	68.4	60.9	49.7
8-9 AM	2043	0.0	3000	2043	0	0.33	0	68.2	60.7	49.7
9-10 AM	2216	0.0	3000	2216	0	0.33	0	68.0	60.6	49.7
10-11 AM	2432	0.0	3000	2432	0	0.36	0	67.7	59.9	48.5
11AM-NOON	2495	0.0	3000	2495	0	0.40	0	67.6	59.1	46.9
NOON-1PM	2600	0.0	3000	2600	0	0.47	0	67.5	57.7	44.5
1-2 PM	2656	0.0	3000	2656	0	0.50	0	67.4	57.0	43.3
2-3 PM	2599	0.0	3000	2599	0	0.47	0	67.5	57.7	44.5
3-4 PM	2603	0.0	3000	2603	0	0.47	0	67.5	57.7	44.5
4-5 PM	2685	0.0	3000	2685	0	0.52	0	67.4	56.6	42.7
5-6 PM	2490	0.0	3000	2490	0	0.40	0	67.6	59.1	47.1
6-7 PM	2223	0.0	3000	2223	0	0.33	0	68.0	60.6	49.7
7-8 PM	1849	0.0	3000	1849	0	0.34	0	68.4	60.9	49.7
8-9 PM	1664	0.0	3000	1664	0	0.34	0	68.7	61.0	49.7
9-10 PM	1651	0.0	3000	1651	0	0.34	0	68.7	61.0	49.7
10-11 PM	1200	0.0	3000	1200	0	0.35	0	69.2	61.3	49.7
11PM-MID	845	0.0	3000	845	0	0.35	0	69.7	61.5	49.7

----- SITE BREAKDOWN DELAYS -----

BREAKDOWN DURATION (MINS)	0
RANGE OF QUEUE DELAY - MIN (VEH-H) MAX	0.0
AV BREAKDOWNS PER DAY	0.00
AV QUEUE DELAY/DAY (VEH-H)	0.0
AV TOTAL DELAY/DAY (VEH-H)	0.0

----- SITE ACCIDENT DELAYS -----

BREAKDOWN DURATION (MINS)	0
RANGE OF QUEUE DELAY - MIN (VEH-H) MAX	0
AV BREAKDOWNS PER DAY	0
AV QUEUE DELAY/DAY (VEH-H)	0
AV TOTAL DELAY/DAY (VEH-H)	0

AVERAGE ACCIDENT NUMBERS (PIA/DAY)

MAIN ROUTE WITHOUT WORKS	0.0194
MAIN ROUTE WITH WORKS	0.0168
'DIVERSION'	0.0000

PIA: Personal Injury Accidents

IMPACTS ON ROAD USERS

ROAD USER COSTS PER DAY	\$4,329
CONGESTED HOURS PER DAY*	0

*Delays Exceeding User-Specified Maximum

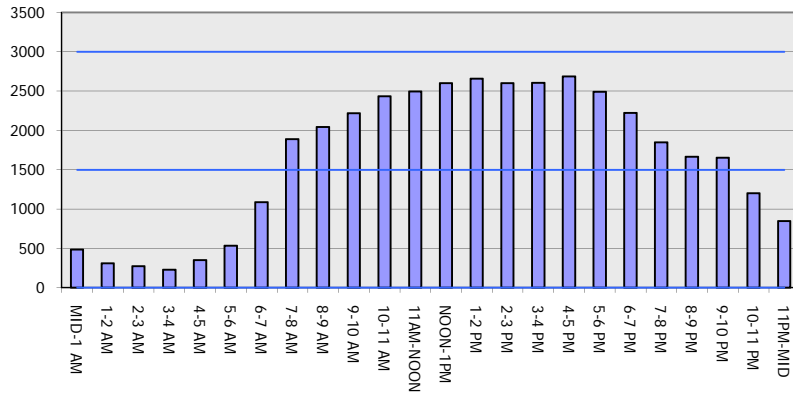
**USH 41: USH 10 TO STH 114 (WINNEBAGO COUNTY)
CONTINUOUS (24 HOUR) CLOSURE
NO DIVERSION ROUTE (MAX QUEUE METHOD)**

OCTOBER

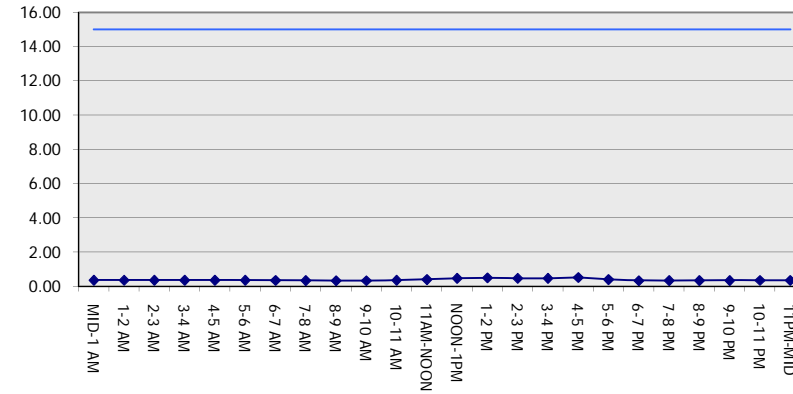
Analyzed for 2009
Construction Season

GRAPHICAL REPRESENTATION OF TRAFFIC MODEL INPUT AND OUTPUT
SATURDAY SOUTHBOUND DIRECTION

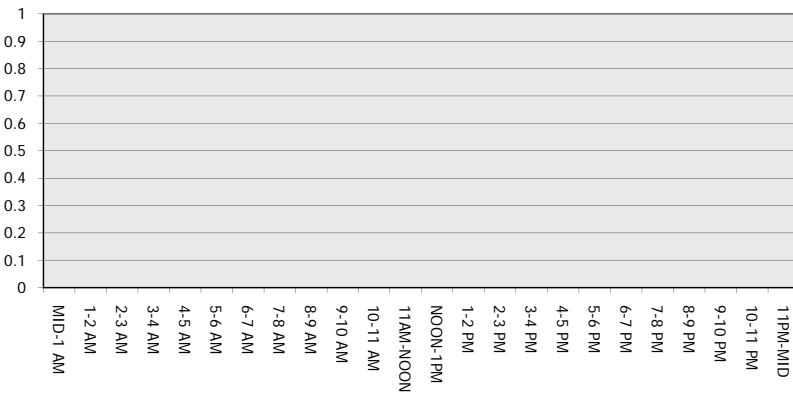
Main Route - Traffic Demand (Vehicles Per Hour)



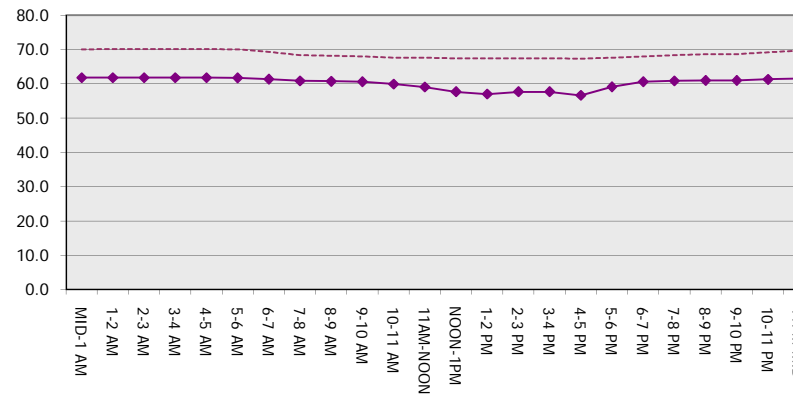
Main Route Average Delay Per Vehicle (Minutes)



Main Route - Average Queue Length (Vehicles)



Main Route - Average Speed (MPH)



USH 41: USH 10 TO STH 114 (WINNEBAGO COUNTY) CONTINUOUS (24 HOUR) CLOSURE NO DIVERSION ROUTE (MAX QUEUE METHOD)	OCTOBER
	Analyzed for 2009 Construction Season

SUMMARY OF TRAFFIC MODEL OUTPUT

SATURDAY NORTHBOUND DIRECTION

TIME OF DAY	FLOWS AND CAPACITY IN VEH/HR							AVERAGE SPEEDS IN MPH		
	MAIN ROUTE		SITE CAPA CITY	FLOW		AV.DEL PER VEH (MINS)	AVERAGE QUEUE (VEH)	MAIN ROUTE		SITE
	DEMAND FLOW	PCT HEAVY		MAIN ROUTE	'DIVER TED'			WITHOUT WORK ZONE	WITH WORK ZONE	
MID-1 AM	488	0.0	3000	488	0	0.36	0	70.1	61.8	49.7
1-2 AM	299	0.0	3000	299	0	0.36	0	70.2	61.8	49.7
2-3 AM	279	0.0	3000	279	0	0.36	0	70.2	61.8	49.7
3-4 AM	221	0.0	3000	221	0	0.36	0	70.2	61.8	49.7
4-5 AM	254	0.0	3000	254	0	0.36	0	70.2	61.8	49.7
5-6 AM	509	0.0	3000	509	0	0.36	0	70.1	61.7	49.7
6-7 AM	722	0.0	3000	722	0	0.35	0	69.9	61.6	49.7
7-8 AM	1326	0.0	3000	1326	0	0.35	0	69.1	61.2	49.7
8-9 AM	1777	0.0	3000	1777	0	0.34	0	68.5	60.9	49.7
9-10 AM	2204	0.0	3000	2204	0	0.33	0	68.0	60.7	49.7
10-11 AM	2768	0.0	2999	2768	0	0.58	0	67.3	55.7	41.2
11AM-NOON	3115	0.0	2999	3115	0	1.42	41	66.9	44.3	37.3
NOON-1PM	3272	0.0	3000	3272	0	5.08	252	66.7	23.6	37.3
1-2 PM	3078	0.0	2999	3078	0	8.57	433	66.9	16.4	37.3
2-3 PM	3032	0.0	2999	3032	0	9.46	481	66.9	15.2	37.3
3-4 PM	3063	0.0	3000	3063	0	10.16	520	66.9	14.5	37.3
4-5 PM	3281	0.0	3000	3281	0	13.33+	699	66.6	12.7	37.3
5-6 PM	3053	0.0	2999	2984	69	15.97+	840	66.9	11.7	37.3
6-7 PM	2580	0.0	2999	2580	0	12.30+	648	67.5	13.4	37.3
7-8 PM	1953	0.0	3000	1953	0	1.23	87	68.3	47.1	49.4
8-9 PM	1650	0.0	3000	1650	0	0.34	0	68.7	61.0	49.7
9-10 PM	1352	0.0	3000	1352	0	0.35	0	69.1	61.2	49.7
10-11 PM	1027	0.0	3000	1027	0	0.35	0	69.4	61.4	49.7
11PM-MID	727	0.0	3000	727	0	0.35	0	69.8	61.6	49.7

+ INDICATES QUEUEING EXCEEDS USER-SPECIFIED MAXIMUM LIMIT

----- SITE BREAKDOWN DELAYS -----	
BREAKDOWN DURATION (MINS)	0
RANGE OF QUEUE DELAY - MIN (VEH-H) MAX	0.0
AV BREAKDOWNS PER DAY	0.00
AV QUEUE DELAY/DAY (VEH-H)	0.0
AV TOTAL DELAY/DAY (VEH-H)	0.0

----- SITE ACCIDENT DELAYS -----	
BREAKDOWN DURATION (MINS)	0
RANGE OF QUEUE DELAY - MIN (VEH-H) MAX	0
AV BREAKDOWNS PER DAY	0
AV QUEUE DELAY/DAY (VEH-H)	0
AV TOTAL DELAY/DAY (VEH-H)	0

AVERAGE ACCIDENT NUMBERS (PIA/DAY)	
MAIN ROUTE WITHOUT WORKS	0.0207
MAIN ROUTE WITH WORKS	0.0179
'DIVERSION'	0.0001

PIA: Personal Injury Accidents

ECONOMIC IMPACT ON ROAD USERS	
ROAD USER COSTS PER DAY	\$66,247
CONGESTED HOURS PER DAY*	3

*Delays Exceeding User-Specified Maximum

**USH 41: USH 10 TO STH 114 (WINNEBAGO COUNTY)
CONTINUOUS (24 HOUR) CLOSURE
NO DIVERSION ROUTE (MAX QUEUE METHOD)**

OCTOBER

Analyzed for 2009
Construction Season

GRAPHICAL REPRESENTATION OF TRAFFIC MODEL INPUT AND OUTPUT
SATURDAY NORTHBOUND DIRECTION

