

USH 41: USH 10 TO STH 114 (WINNEBAGO COUNTY) CONTINUOUS (24 HOUR) CLOSURE NO DIVERSION ROUTE (MAX QUEUE METHOD)	AUGUST
	Analyzed for 2009 Construction Season

SUMMARY OF TRAFFIC MODEL OUTPUT

SUNDAY SOUTHBOUND DIRECTION

TIME OF DAY	FLOWS AND CAPACITY IN VEH/HR						AVERAGE SPEEDS IN MPH			
	MAIN ROUTE		SITE CAPA CITY	FLOW		AV.DEL PER VEH (MINS)	AVERAGE QUEUE (VEH)	MAIN ROUTE		SITE
	DEMAND FLOW	PCT HEAVY		MAIN ROUTE	'DIVER TED'			WITHOUT WORK ZONE	WITH WORK ZONE	
MID-1 AM	1185	0.0	3000	1185	0	0.35	0	69.2	61.3	49.7
1-2 AM	382	0.0	3000	382	0	0.36	0	70.2	61.8	49.7
2-3 AM	297	0.0	3000	297	0	0.36	0	70.2	61.8	49.7
3-4 AM	242	0.0	3000	242	0	0.36	0	70.2	61.8	49.7
4-5 AM	241	0.0	3000	241	0	0.36	0	70.2	61.8	49.7
5-6 AM	323	0.0	3000	323	0	0.36	0	70.2	61.8	49.7
6-7 AM	489	0.0	3000	489	0	0.36	0	70.1	61.8	49.7
7-8 AM	828	0.0	3000	828	0	0.35	0	69.7	61.5	49.7
8-9 AM	1422	0.0	3000	1422	0	0.34	0	69.0	61.2	49.7
9-10 AM	2142	0.0	2999	2142	0	0.33	0	68.1	60.7	49.7
10-11 AM	2934	0.0	2999	2934	0	0.85	12	67.1	51.4	39.2
11AM-NOON	3459	0.0	3000	3459	0	4.85	259	66.4	24.3	37.3
NOON-1PM	3547	0.0	3000	3279	268	14.07+	745	66.3	12.5	37.3
1-2 PM	3560	0.0	3000	3018	542	16.11+	849	66.3	11.7	37.3
2-3 PM	3515	0.0	3000	3013	503	16.11+	849	66.4	11.7	37.3
3-4 PM	3561	0.0	3000	3009	552	16.11+	849	66.3	11.7	37.3
4-5 PM	3392	0.0	3000	3006	386	16.11+	848	66.5	11.7	37.3
5-6 PM	3059	0.0	3000	2981	78	15.90+	836	66.9	11.8	37.3
6-7 PM	2575	0.0	2999	2575	0	12.01+	633	67.6	13.5	37.3
7-8 PM	2035	0.0	3000	2035	0	1.31	91	68.2	46.0	48.6
8-9 PM	1480	0.0	3000	1480	0	0.34	0	68.9	61.1	49.7
9-10 PM	1061	0.0	3000	1061	0	0.35	0	69.4	61.4	49.7
10-11 PM	716	0.0	3000	716	0	0.36	0	69.9	61.6	49.7
11PM-MID	413	0.0	3000	413	0	0.36	0	70.2	61.8	49.7

+ INDICATES QUEUEING EXCEEDS USER-SPECIFIED MAXIMUM LIMIT

----- SITE BREAKDOWN DELAYS -----	
BREAKDOWN DURATION (MINS)	0
RANGE OF QUEUE DELAY - MIN (VEH-H) MAX	0.0
AV BREAKDOWNS PER DAY	0.00
AV QUEUE DELAY/DAY (VEH-H)	0.0
AV TOTAL DELAY/DAY (VEH-H)	0.0

----- SITE ACCIDENT DELAYS -----	
BREAKDOWN DURATION (MINS)	0
RANGE OF QUEUE DELAY - MIN (VEH-H) MAX	0
AV BREAKDOWNS PER DAY	0
AV QUEUE DELAY/DAY (VEH-H)	0
AV TOTAL DELAY/DAY (VEH-H)	0

AVERAGE ACCIDENT NUMBERS (PIA/DAY)	
MAIN ROUTE WITHOUT WORKS	0.0211
MAIN ROUTE WITH WORKS	0.0173
'DIVERSION'	0.0027
PIA: Personal Injury Accidents	
IMPACTS ON ROAD USERS	
ROAD USER COSTS PER DAY	\$107,319
CONGESTED HOURS PER DAY*	7

*Delays Exceeding User-Specified Maximum

**USH 41: USH 10 TO STH 114 (WINNEBAGO COUNTY)
CONTINUOUS (24 HOUR) CLOSURE
NO DIVERSION ROUTE (MAX QUEUE METHOD)**

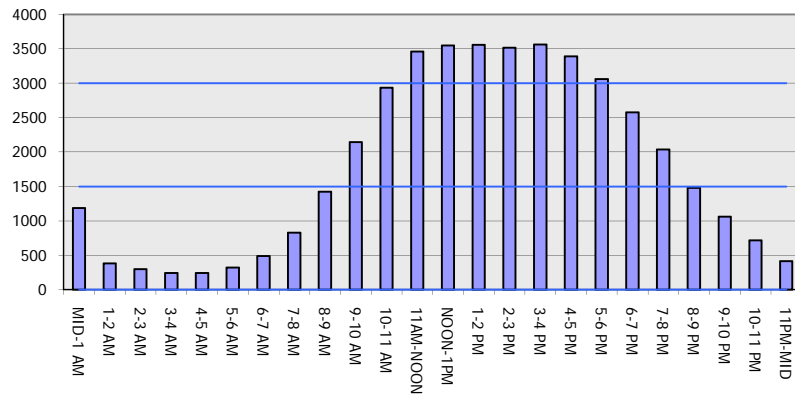
AUGUST

Analyzed for 2009
Construction Season

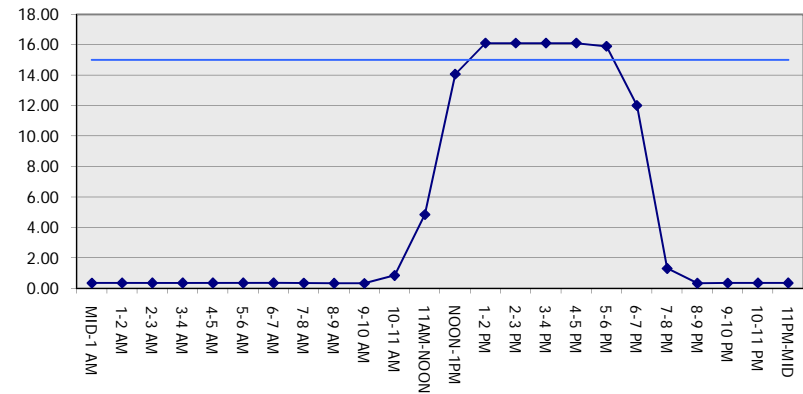
GRAPHICAL REPRESENTATION OF TRAFFIC MODEL INPUT AND OUTPUT

SUNDAY SOUTHBOUND DIRECTION

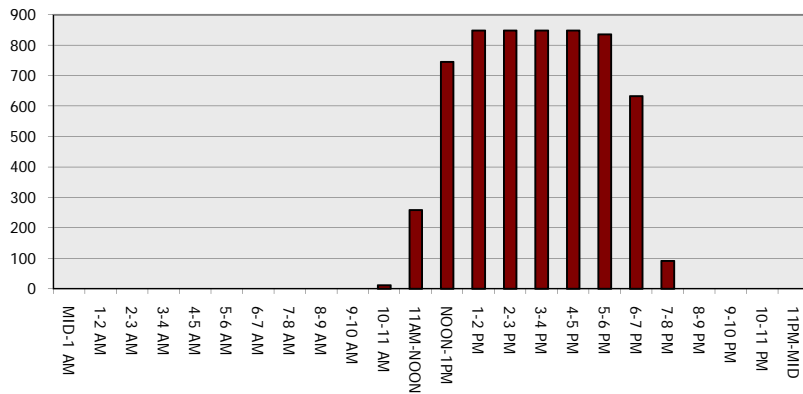
Main Route - Traffic Demand (Vehicles Per Hour)



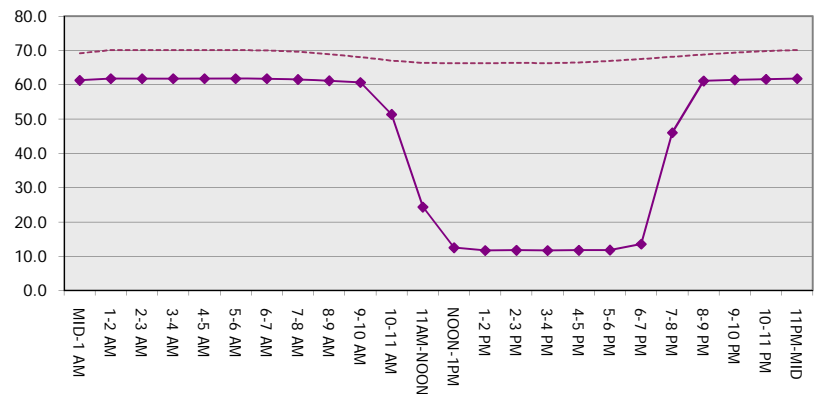
Main Route Average Delay Per Vehicle (Minutes)



Main Route - Average Queue Length (Vehicles)



Main Route - Average Speed (MPH)



USH 41: USH 10 TO STH 114 (WINNEBAGO COUNTY) CONTINUOUS (24 HOUR) CLOSURE NO DIVERSION ROUTE (MAX QUEUE METHOD)	AUGUST
	Analyzed for 2009 Construction Season

SUMMARY OF TRAFFIC MODEL OUTPUT

SUNDAY NORTHBOUND DIRECTION

TIME OF DAY	FLOWS AND CAPACITY IN VEH/HR							AVERAGE SPEEDS IN MPH		
	MAIN ROUTE		SITE CAPA CITY	FLOW		AV.DEL PER VEH (MINS)	AVERAGE QUEUE (VEH)	MAIN ROUTE		SITE
	DEMAND FLOW	PCT HEAVY		MAIN ROUTE	'DIVER TED'			WITHOUT WORK ZONE	WITH WORK ZONE	
MID-1 AM	477	0.0	3000	477	0	0.36	0	70.1	61.8	49.7
1-2 AM	302	0.0	3000	302	0	0.36	0	70.2	61.8	49.7
2-3 AM	232	0.0	3000	232	0	0.36	0	70.2	61.8	49.7
3-4 AM	145	0.0	3000	145	0	0.36	0	70.2	61.8	49.7
4-5 AM	142	0.0	3000	142	0	0.36	0	70.2	61.8	49.7
5-6 AM	318	0.0	3000	318	0	0.36	0	70.2	61.8	49.7
6-7 AM	373	0.0	3000	373	0	0.36	0	70.2	61.8	49.7
7-8 AM	509	0.0	3000	509	0	0.36	0	70.1	61.7	49.7
8-9 AM	831	0.0	3000	831	0	0.35	0	69.7	61.5	49.7
9-10 AM	1310	0.0	3000	1310	0	0.35	0	69.1	61.2	49.7
10-11 AM	2031	0.0	3000	2031	0	0.33	0	68.2	60.7	49.7
11AM-NOON	2579	0.0	3000	2579	0	0.45	0	67.5	58.0	45.0
NOON-1PM	2784	0.0	3000	2784	0	0.59	0	67.3	55.5	40.9
1-2 PM	2905	0.0	3000	2905	0	0.67	0	67.1	54.1	38.8
2-3 PM	2917	0.0	3000	2917	0	0.67	0	67.1	54.0	38.6
3-4 PM	2871	0.0	3000	2871	0	0.64	0	67.2	54.5	39.3
4-5 PM	2921	0.0	3000	2921	0	0.68	0	67.1	53.9	38.5
5-6 PM	2743	0.0	3000	2743	0	0.56	0	67.3	56.0	41.6
6-7 PM	2393	0.0	3000	2393	0	0.33	0	67.8	60.4	49.5
7-8 PM	1948	0.0	3000	1948	0	0.34	0	68.3	60.8	49.7
8-9 PM	1695	0.0	3000	1695	0	0.34	0	68.6	61.0	49.7
9-10 PM	1378	0.0	3000	1378	0	0.34	0	69.0	61.2	49.7
10-11 PM	862	0.0	3000	862	0	0.35	0	69.7	61.5	49.7
11PM-MID	568	0.0	3000	568	0	0.36	0	70.0	61.7	49.7

----- SITE BREAKDOWN DELAYS -----	
BREAKDOWN DURATION (MINS)	0
RANGE OF QUEUE DELAY - MIN (VEH-H) MAX	0.0
AV BREAKDOWNS PER DAY	0.00
AV QUEUE DELAY/DAY (VEH-H)	0.0
AV TOTAL DELAY/DAY (VEH-H)	0.0

----- SITE ACCIDENT DELAYS -----	
BREAKDOWN DURATION (MINS)	0
RANGE OF QUEUE DELAY - MIN (VEH-H) MAX	0
AV BREAKDOWNS PER DAY	0
AV QUEUE DELAY/DAY (VEH-H)	0
AV TOTAL DELAY/DAY (VEH-H)	0

AVERAGE ACCIDENT NUMBERS (PIA/DAY)	
MAIN ROUTE WITHOUT WORKS	0.0174
MAIN ROUTE WITH WORKS	0.0151
'DIVERSION'	0.0000

PIA: Personal Injury Accidents

ECONOMIC IMPACT ON ROAD USERS	
ROAD USER COSTS PER DAY	\$4,893
CONGESTED HOURS PER DAY*	0

*Delays Exceeding User-Specified Maximum

**USH 41: USH 10 TO STH 114 (WINNEBAGO COUNTY)
CONTINUOUS (24 HOUR) CLOSURE
NO DIVERSION ROUTE (MAX QUEUE METHOD)**

AUGUST

Analyzed for 2009
Construction Season

GRAPHICAL REPRESENTATION OF TRAFFIC MODEL INPUT AND OUTPUT
SUNDAY NORTHBOUND DIRECTION

