

<b>USH 41: USH 10 TO STH 114 (WINNEBAGO COUNTY)                  CONTINUOUS (24 HOUR) 2 LANE CLOSURE                  NO DIVERSION ROUTE (MAX QUEUE METHOD)</b>	<b>AUGUST</b>
	Analyzed for 2009 Construction Season

**SUMMARY OF TRAFFIC MODEL OUTPUT**

MON-THUR                  SOUTHBOUND DIRECTION

TIME OF DAY	FLOWS AND CAPACITY IN VEH/HR							AVERAGE SPEEDS IN MPH			
	MAIN ROUTE		SITE CAPA CITY	FLOW		AV.DEL PER VEH (MINS)	AVERAGE QUEUE (VEH)	MAIN ROUTE		SITE	
	DEMAND FLOW	PCT HEAVY		MAIN ROUTE	'DIVER TED'			WITHOUT WORK ZONE	WITH WORK ZONE		
MID-1 AM	336	0.0	1500	336	0	0.51	0	70.2	58.8	44.2	
1-2 AM	242	0.0	1500	242	0	0.50	0	70.2	59.0	44.5	
2-3 AM	242	0.0	1500	242	0	0.50	0	70.2	59.0	44.5	
3-4 AM	315	0.0	1500	315	0	0.51	0	70.2	58.8	44.2	
4-5 AM	595	0.0	1500	595	0	0.54	0	70.0	58.1	43.2	
5-6 AM	1395	0.0	1499	1395	0	1.37	19	69.0	45.7	35.8	
6-7 AM	2698	0.0	1500	1896	802	13.64+	349	67.4	11.4	32.7	
7-8 AM	3663	0.0	1499	1500	2163	16.25+	399	65.8	9.7	30.8	
8-9 AM	2890	0.0	1500	1500	1390	16.31+	400	67.1	9.7	30.8	
9-10 AM	2513	0.0	1500	1500	1013	16.33+	400	67.6	9.7	30.8	
10-11 AM	2500	0.0	1500	1500	1000	16.33+	400	67.6	9.7	30.8	
11AM-NOON	2583	0.0	1500	1500	1083	16.32+	400	67.5	9.7	30.8	
NOON-1PM	2711	0.0	1500	1500	1211	16.32+	400	67.4	9.7	30.8	
1-2 PM	2991	0.0	1500	1500	1491	16.30+	400	67.0	9.7	30.8	
2-3 PM	3278	0.0	1500	1500	1778	16.29+	400	66.6	9.7	30.8	
3-4 PM	3491	0.0	1500	1500	1991	16.28+	400	66.4	9.7	30.8	
4-5 PM	4010	0.0	1500	1500	2510	16.15+	400	63.5	9.7	30.8	
5-6 PM	3734	0.0	1500	1500	2234	16.23+	400	65.3	9.7	30.8	
6-7 PM	2366	0.0	1500	1462	904	16.20+	396	67.8	9.8	30.8	
7-8 PM	1705	0.0	1499	1458	247	16.19+	395	68.6	9.8	30.8	
8-9 PM	1550	0.0	1499	1502	48	16.30+	398	68.8	9.8	30.8	
9-10 PM	1333	0.0	1499	1333	0	13.46+	329	69.1	11.5	30.8	
10-11 PM	1054	0.0	1499	1054	0	2.17	71	69.4	38.3	38.3	
11PM-MID	704	0.0	1500	704	0	0.55	0	69.9	57.8	42.7	

+ INDICATES QUEUEING EXCEEDS USER-SPECIFIED MAXIMUM LIMIT

*----- SITE BREAKDOWN DELAYS -----*	
BREAKDOWN DURATION (MINS)	0
RANGE OF QUEUE DELAY - MIN (VEH-H) MAX	0.0
AV BREAKDOWNS PER DAY	0.00
AV QUEUE DELAY/DAY (VEH-H)	0.0
AV TOTAL DELAY/DAY (VEH-H)	0.0

*----- SITE ACCIDENT DELAYS -----*	
BREAKDOWN DURATION (MINS)	0
RANGE OF QUEUE DELAY - MIN (VEH-H) MAX	0
AV BREAKDOWNS PER DAY	0
AV QUEUE DELAY/DAY (VEH-H)	0
AV TOTAL DELAY/DAY (VEH-H)	0

AVERAGE ACCIDENT NUMBERS (PIA/DAY)	
MAIN ROUTE WITHOUT WORKS	0.0241
MAIN ROUTE WITH WORKS	0.0124
'DIVERSION'	0.0227
<small>PIA: Personal Injury Accidents</small>	
IMPACTS ON ROAD USERS	
ROAD USER COSTS PER DAY	\$155,091
CONGESTED HOURS PER DAY*	16

\*Delays Exceeding User-Specified Maximum

**USH 41: USH 10 TO STH 114 (WINNEBAGO COUNTY)  
CONTINUOUS (24 HOUR) 2 LANE CLOSURE  
NO DIVERSION ROUTE (MAX QUEUE METHOD)**

**AUGUST**

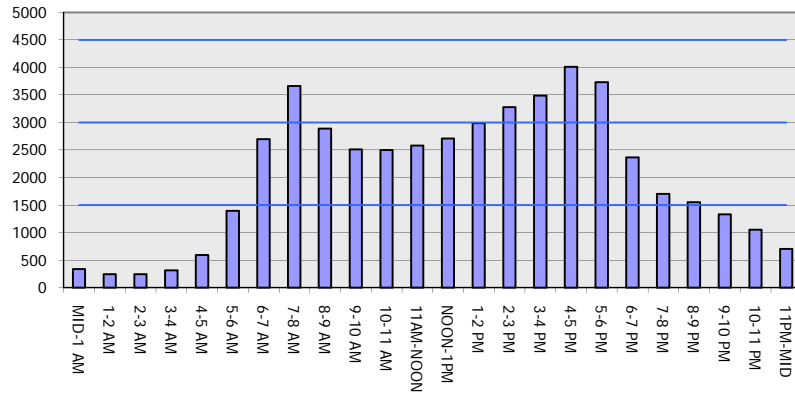
Analyzed for 2009  
Construction Season

**GRAPHICAL REPRESENTATION OF TRAFFIC MODEL INPUT AND OUTPUT**

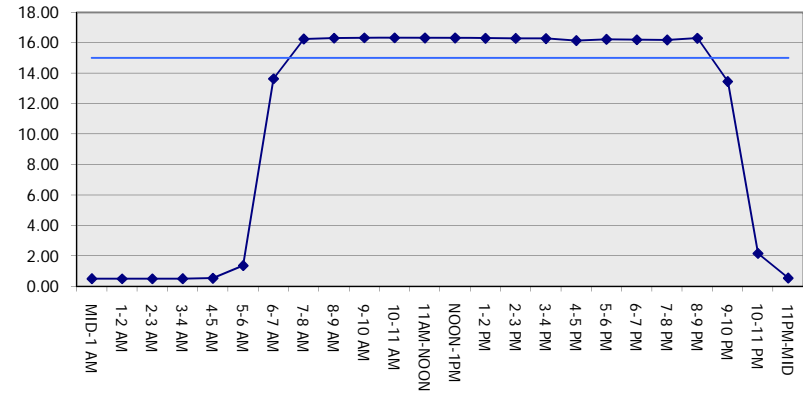
**MON-THUR**

**SOUTHBOUND DIRECTION**

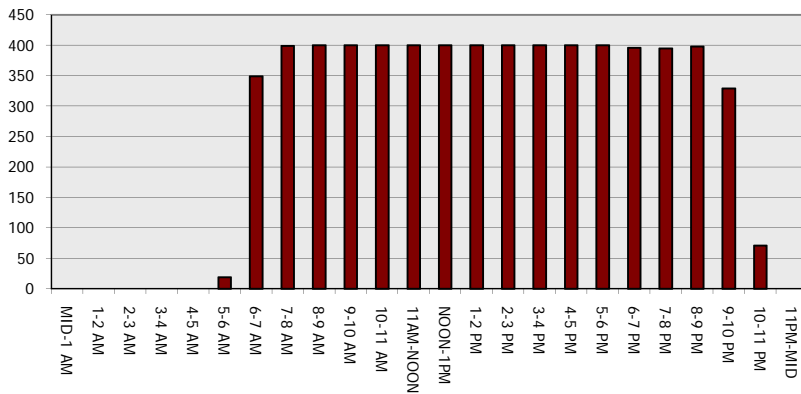
**Main Route - Traffic Demand (Vehicles Per Hour)**



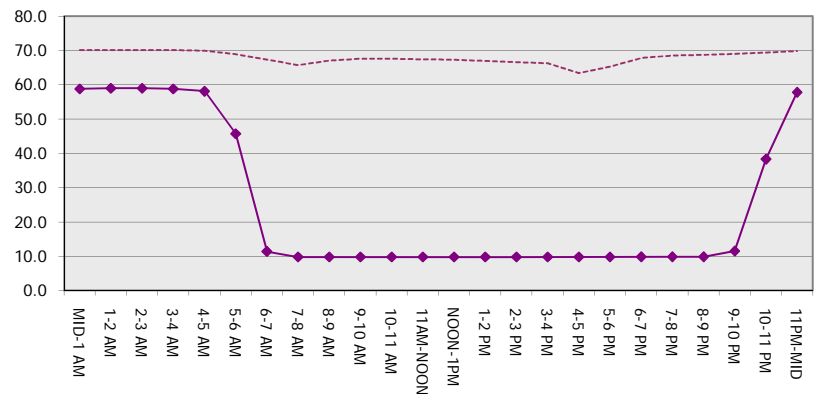
**Main Route Average Delay Per Vehicle (Minutes)**



**Main Route - Average Queue Length (Vehicles)**



**Main Route - Average Speed (MPH)**



<b>USH 41: USH 10 TO STH 114 (WINNEBAGO COUNTY)                  CONTINUOUS (24 HOUR) 2 LANE CLOSURE                  NO DIVERSION ROUTE (MAX QUEUE METHOD)</b>	<b>AUGUST</b>
	Analyzed for 2009 Construction Season

**SUMMARY OF TRAFFIC MODEL OUTPUT**

MON-THUR                      NORTHBOUND DIRECTION

TIME OF DAY	FLOWS AND CAPACITY IN VEH/HR							AVERAGE SPEEDS IN MPH		
	MAIN ROUTE		SITE CAPA CITY	FLOW		AV.DEL PER VEH (MINS)	AVERAGE QUEUE (VEH)	MAIN ROUTE		SITE
	DEMAND FLOW	PCT HEAVY		MAIN ROUTE	'DIVER TED'			WITHOUT WORK ZONE	WITH WORK ZONE	
MID-1 AM	354	0.0	1500	354	0	0.52	0	70.2	58.7	44.1
1-2 AM	260	0.0	1500	260	0	0.50	0	70.2	59.1	44.6
2-3 AM	224	0.0	1500	224	0	0.50	0	70.2	59.0	44.5
3-4 AM	248	0.0	1500	248	0	0.50	0	70.2	58.4	43.6
4-5 AM	478	0.0	1500	478	0	0.53	0	70.1	48.7	36.1
5-6 AM	1338	0.0	1499	1338	0	1.12	9	69.1	13.5	30.8
6-7 AM	2410	0.0	1500	1804	606	11.08+	295	67.8	9.7	30.8
7-8 AM	3754	0.0	1500	1500	2254	16.23+	400	65.2	9.7	30.8
8-9 AM	2771	0.0	1500	1500	1271	16.31+	400	67.3	9.7	30.8
9-10 AM	2559	0.0	1500	1500	1059	16.32+	400	67.6	9.7	30.8
10-11 AM	2698	0.0	1500	1500	1198	16.32+	400	67.4	9.7	30.8
11AM-NOON	2807	0.0	1500	1500	1307	16.31+	400	67.3	9.7	30.8
NOON-1PM	2780	0.0	1500	1500	1280	16.31+	400	67.3	9.7	30.8
1-2 PM	2892	0.0	1500	1500	1392	16.31+	400	67.1	9.7	30.8
2-3 PM	3246	0.0	1500	1500	1746	16.29+	400	66.7	9.7	30.8
3-4 PM	3793	0.0	1500	1500	2293	16.21+	400	65.0	9.7	30.8
4-5 PM	4275	0.0	1500	1500	2775	16.06+	400	61.7	9.7	30.8
5-6 PM	3963	0.0	1500	1500	2463	16.16+	400	63.8	9.7	30.8
6-7 PM	2580	0.0	1500	1500	1080	16.32+	400	67.5	9.7	30.8
7-8 PM	1742	0.0	1500	1562	180	16.08+	392	68.6	9.9	30.8
8-9 PM	1467	0.0	1499	1447	20	15.92+	388	68.9	10.0	30.8
9-10 PM	1210	0.0	1499	1210	0	8.67	224	69.2	16.4	32.5
10-11 PM	927	0.0	1500	927	0	0.68	3	69.6	55.4	41.9
11PM-MID	679	0.0	1500	679	0	0.55	0	69.9	57.9	42.8

+ INDICATES QUEUEING EXCEEDS USER-SPECIFIED MAXIMUM LIMIT

*----- SITE BREAKDOWN DELAYS -----*	
BREAKDOWN DURATION (MINS)	0
RANGE OF QUEUE DELAY - MIN (VEH-H) MAX	0.0
AV BREAKDOWNS PER DAY	0.00
AV QUEUE DELAY/DAY (VEH-H)	0.0
AV TOTAL DELAY/DAY (VEH-H)	0.0

*----- SITE ACCIDENT DELAYS -----*	
BREAKDOWN DURATION (MINS)	0
RANGE OF QUEUE DELAY - MIN (VEH-H) MAX	0
AV BREAKDOWNS PER DAY	0
AV QUEUE DELAY/DAY (VEH-H)	0
AV TOTAL DELAY/DAY (VEH-H)	0

AVERAGE ACCIDENT NUMBERS (PIA/DAY)	
MAIN ROUTE WITHOUT WORKS	0.0244
MAIN ROUTE WITH WORKS	0.0122
'DIVERSION'	0.0239

PIA: Personal Injury Accidents

ECONOMIC IMPACT ON ROAD USERS	
ROAD USER COSTS PER DAY	\$155,210
CONGESTED HOURS PER DAY*	15

\*Delays Exceeding User-Specified Maximum

**USH 41: USH 10 TO STH 114 (WINNEBAGO COUNTY)  
 CONTINUOUS (24 HOUR) 2 LANE CLOSURE  
 NO DIVERSION ROUTE (MAX QUEUE METHOD)**

**AUGUST**

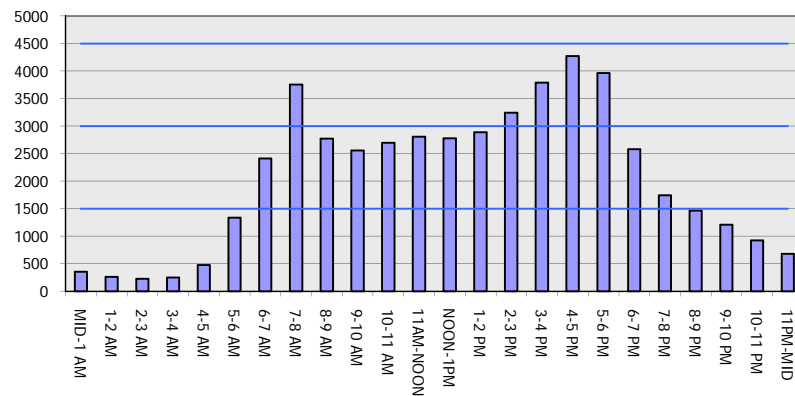
Analyzed for 2009  
 Construction Season

**GRAPHICAL REPRESENTATION OF TRAFFIC MODEL INPUT AND OUTPUT**

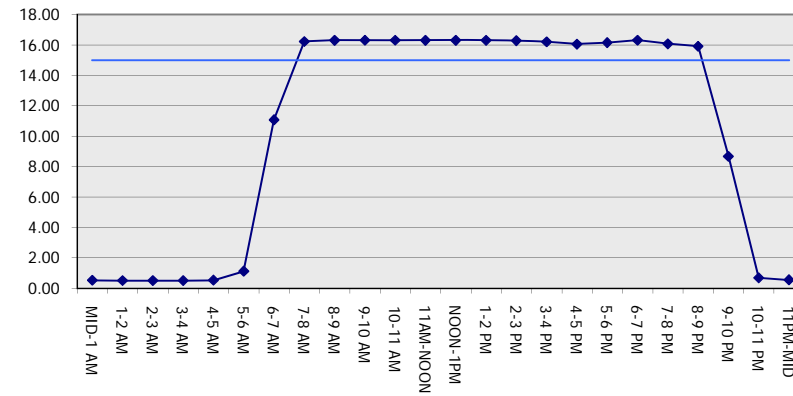
**MON-THUR**

**NORTHBOUND DIRECTION**

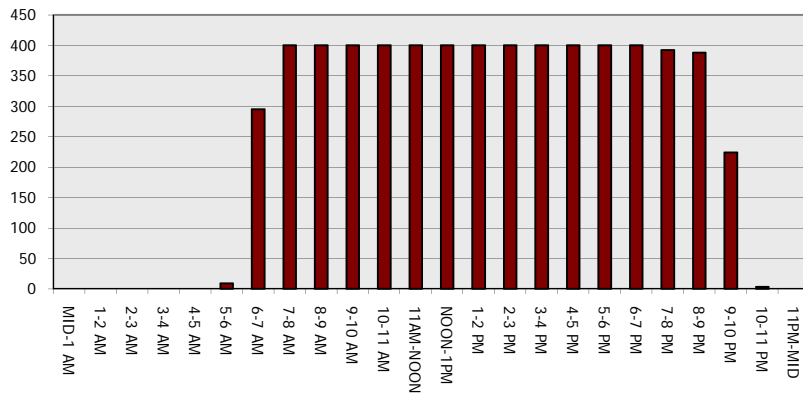
**Main Route - Traffic Demand (Vehicles Per Hour)**



**Main Route Average Delay Per Vehicle (Minutes)**



**Main Route - Average Queue Length (Vehicles)**



**Main Route - Average Speed (MPH)**

