

**USH 45: USH 10 TO STH 116 (WINNEBAGO COUNTY)  
CONTINUOUS (24 HOUR) CLOSURE  
DIVERSION ROUTE: STH 116 - CTH M - CTH II**

**OCTOBER**

Analyzed for 2009  
Construction Season

**SUMMARY OF TRAFFIC MODEL OUTPUT**

MON-THUR SOUTHBOUND DIRECTION

TIME OF DAY	FLOWS AND CAPACITY IN VEH/HR								AVERAGE SPEEDS IN MPH						
	MAIN ROUTE		ALTERNATE ROUTE		SITE CAPA CITY	FLOW MAIN ROUTE	FLOW DIVER -TING	TOTAL DIVN FLOW	AV.DEL PER VEH (MINS)	AVERAGE QUEUE (VEH)	MAIN ROUTE		ALTERNATE ROUTE		
	DEMAND FLOW	PCT HEAVY	NORMAL FLOW	PCT HEAVY							WITHOUT WORK ZN	WITH WORK ZN	SITE	WITHOUT WORK ZN	WITH WORK ZN
MID-1 AM	31	0.0	6	0.0	1500	31	0	6	0.50	0	63.8	59.3	41.9	24.8	24.8
1-2 AM	23	0.0	4	0.0	1500	23	0	4	0.50	0	63.8	59.4	41.9	24.8	24.8
2-3 AM	22	0.0	4	0.0	1500	22	0	4	0.50	0	63.8	59.4	41.9	24.8	24.8
3-4 AM	50	0.0	10	0.0	1500	50	0	10	0.50	0	63.8	59.2	41.8	24.8	24.8
4-5 AM	102	0.0	21	0.0	1500	102	0	21	0.51	0	63.7	59.1	41.7	24.7	24.7
5-6 AM	196	0.0	39	0.0	1500	196	0	39	0.52	0	63.5	58.9	41.3	24.5	24.5
6-7 AM	320	0.0	64	0.0	1500	320	0	64	0.53	0	63.3	58.6	40.9	24.3	24.3
7-8 AM	412	0.0	82	0.0	1500	412	0	82	0.54	0	63.2	58.4	40.6	24.2	24.2
8-9 AM	311	0.0	62	0.0	1500	311	0	62	0.53	0	63.3	58.6	40.9	24.3	24.3
9-10 AM	272	0.0	54	0.0	1500	272	0	54	0.52	0	63.4	58.7	41.0	24.4	24.4
10-11 AM	291	0.0	57	0.0	1500	291	0	57	0.53	0	63.3	58.7	41.0	24.4	24.4
11A-NOON	296	0.0	59	0.0	1500	296	0	59	0.53	0	63.3	58.7	41.0	24.4	24.4
NOON-1PM	314	0.0	63	0.0	1500	314	0	63	0.53	0	63.3	58.6	40.9	24.3	24.3
1-2 PM	350	0.0	70	0.0	1500	350	0	70	0.53	0	63.3	58.6	40.8	24.3	24.3
2-3 PM	353	0.0	70	0.0	1500	353	0	70	0.53	0	63.2	58.6	40.8	24.3	24.3
3-4 PM	384	0.0	77	0.0	1500	384	0	77	0.54	0	63.2	58.5	40.7	24.3	24.3
4-5 PM	414	0.0	82	0.0	1500	414	0	82	0.54	0	63.2	58.4	40.6	24.2	24.2
5-6 PM	369	0.0	74	0.0	1500	369	0	74	0.53	0	63.2	58.5	40.7	24.3	24.3
6-7 PM	273	0.0	54	0.0	1500	273	0	54	0.52	0	63.4	58.7	41.0	24.4	24.4
7-8 PM	192	0.0	39	0.0	1500	192	0	39	0.52	0	63.5	58.9	41.3	24.5	24.5
8-9 PM	130	0.0	26	0.0	1500	130	0	26	0.51	0	63.7	59.1	41.5	24.7	24.7
9-10 PM	109	0.0	22	0.0	1500	109	0	22	0.51	0	63.7	59.1	41.6	24.7	24.7
10-11 PM	70	0.0	14	0.0	1500	70	0	14	0.51	0	63.8	59.2	41.7	24.7	24.7
11PM-MID	39	0.0	8	0.0	1500	39	0	8	0.50	0	63.8	59.3	41.9	24.8	24.8

*----- SITE BREAKDOWN DELAYS -----*	
BREAKDOWN DURATION (MINS)	0
RANGE OF QUEUE DELAY - MIN (VEH-H) MAX	0.0
RANGE OF DIVN DELAY - MIN (VEH-H) MAX	0.0
AV BREAKDOWNS PER DAY	0.00
AV QUEUE DELAY/DAY (VEH-H)	0.0
AV DIVN DELAY/DAY (VEH-H)	0.0
AV TOTAL DELAY/DAY (VEH-H)	0.0

*----- SITE ACCIDENT DELAYS -----*	
ACCIDENT DURATION (MINS)	0
RANGE OF QUEUE DELAY - MIN (VEH-H) MAX	0.0
RANGE OF DIVN DELAY - MIN (VEH-H) MAX	0.0
AV ACCIDENTS PER DAY	0.00
AV QUEUE DELAY/DAY (VEH-H)	0.0
AV DIVN DELAY/DAY (VEH-H)	0.0
AV TOTAL DELAY/DAY (VEH-H)	0.0

AVERAGE ACCIDENT NUMBERS (PIA/DAY)	
MAIN ROUTE WITHOUT WORKS	0.0061
MAIN ROUTE WITH WORKS	0.0067
DIVERSION	0.0123

PIA: Personal Injury Accidents

IMPACTS ON ROAD USERS	
ROAD USER COSTS PER DAY ( DOLLARS)	\$563
CONGESTED HOURS PER DAY*	0

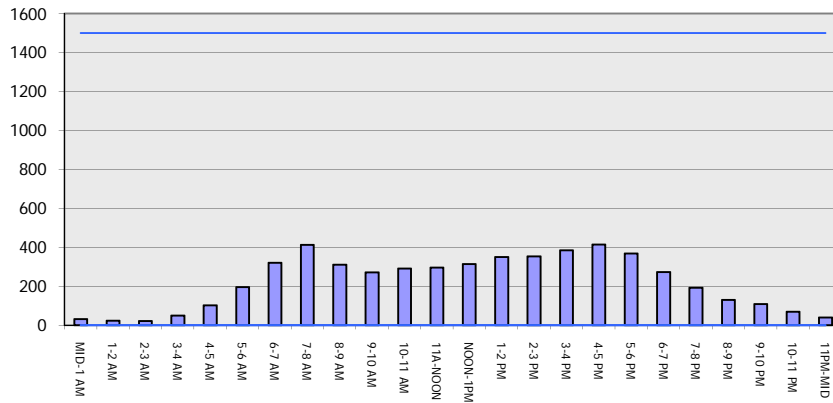
\*Delays Exceeding 15 Minutes

**USH 45: USH 10 TO STH 116 (WINNEBAGO COUNTY)  
 CONTINUOUS (24 HOUR) CLOSURE  
 DIVERSION ROUTE: STH 116 - CTH M - CTH II**

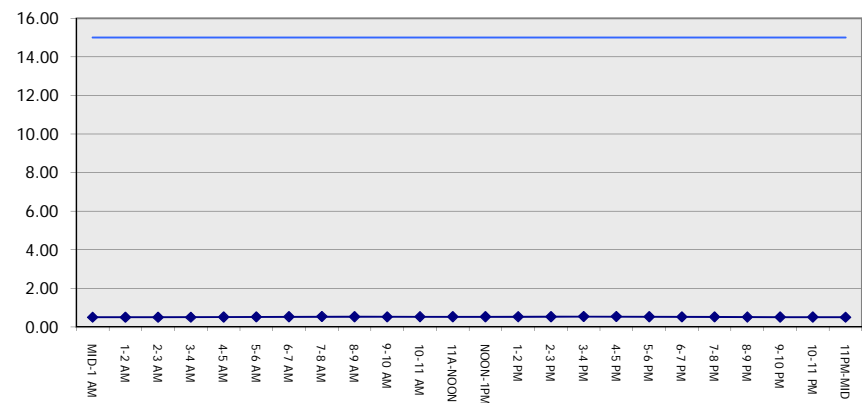
**OCTOBER**  
 Analyzed for 2009  
 Construction Season

**GRAPHICAL REPRESENTATION OF TRAFFIC MODEL INPUT AND OUTPUT**  
**MON-THUR SOUTHBOUND DIRECTION**

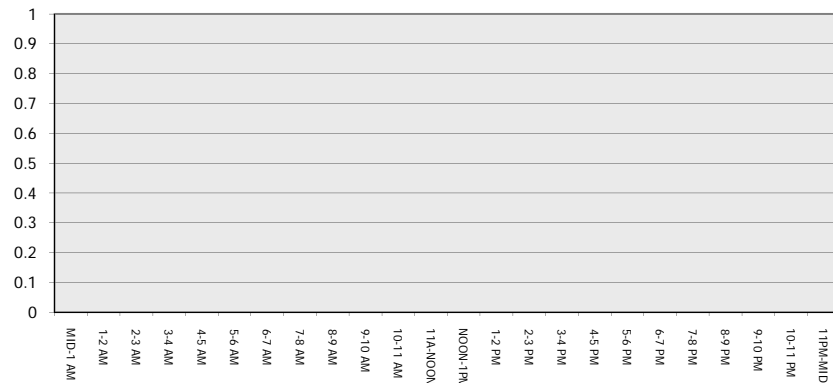
**Main Route - Traffic Demand (Vehicles Per Hour)**



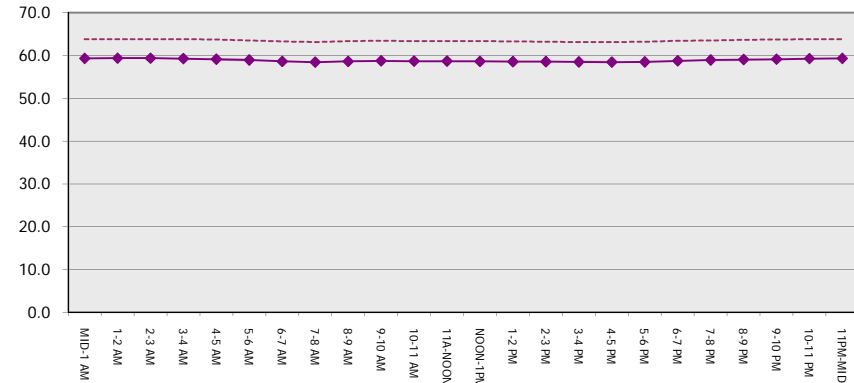
**Main Route Average Delay Per Vehicle (Minutes)**



**Main Route - Average Queue Length (Vehicles)**



**Main Route - Average Speed (MPH)**



<b>USH 45: USH 10 TO STH 116 (WINNEBAGO COUNTY)                  CONTINUOUS (24 HOUR) CLOSURE                  DIVERSION ROUTE: STH 116 - CTH M - CTH II</b>	<b>OCTOBER</b>
	Analyzed for 2009 Construction Season

**SUMMARY OF TRAFFIC MODEL OUTPUT**

MON-THUR                      NORTHBOUND DIRECTION

TIME OF DAY	FLOWS AND CAPACITY IN VEH/HR								AVERAGE SPEEDS IN MPH						
	MAIN		DIVERSION		SITE CAPA CITY	FLOW MAIN ROUTE	FLOW DIVER -TING	TOTAL DIVN FLOW	AV.DEL PER VEH (MINS)	AVERAGE QUEUE (VEH)	MAIN ROUTE		SITE	ALTERNATE ROUTE	
	DEMAND FLOW	PCT HEAVY	NORMAL FLOW	PCT HEAVY							WITHOUT WORK ZN	WITH WORK ZN		WITHOUT WORK ZN	WITH WORK ZN
MID-1 AM	32	0.0	6	0.0	1500	32	0	6	0.50	0	63.8	59.3	41.9	24.8	24.8
1-2 AM	30	0.0	6	0.0	1500	30	0	6	0.50	0	63.8	59.3	41.9	24.8	24.8
2-3 AM	35	0.0	6	0.0	1500	35	0	6	0.50	0	63.8	59.3	41.9	24.8	24.8
3-4 AM	32	0.0	6	0.0	1500	32	0	6	0.50	0	63.8	59.3	41.9	24.8	24.8
4-5 AM	69	0.0	14	0.0	1500	69	0	14	0.51	0	63.8	59.2	41.7	24.7	24.7
5-6 AM	155	0.0	31	0.0	1500	155	0	31	0.51	0	63.6	59.0	41.5	24.6	24.6
6-7 AM	268	0.0	53	0.0	1500	268	0	53	0.52	0	63.4	58.7	41.0	24.4	24.4
7-8 AM	351	0.0	70	0.0	1500	351	0	70	0.53	0	63.2	58.6	40.8	24.3	24.3
8-9 AM	291	0.0	57	0.0	1500	291	0	57	0.53	0	63.3	58.7	41.0	24.4	24.4
9-10 AM	298	0.0	59	0.0	1500	298	0	59	0.53	0	63.3	58.7	41.0	24.4	24.4
10-11 AM	296	0.0	58	0.0	1500	296	0	58	0.53	0	63.3	58.7	41.0	24.4	24.4
11A-NOON	293	0.0	58	0.0	1500	293	0	58	0.53	0	63.3	58.7	41.0	24.4	24.4
NOON-1PM	297	0.0	59	0.0	1500	297	0	59	0.53	0	63.3	58.7	41.0	24.4	24.4
1-2 PM	289	0.0	57	0.0	1500	289	0	57	0.53	0	63.3	58.7	41.0	24.4	24.4
2-3 PM	353	0.0	70	0.0	1500	353	0	70	0.53	0	63.2	58.6	40.8	24.3	24.3
3-4 PM	424	0.0	84	0.0	1500	424	0	84	0.54	0	63.1	58.4	40.6	24.2	24.2
4-5 PM	465	0.0	92	0.0	1500	465	0	92	0.54	0	63.0	58.3	40.4	24.2	24.2
5-6 PM	390	0.0	78	0.0	1500	390	0	78	0.54	0	63.2	58.4	40.7	24.2	24.2
6-7 PM	258	0.0	51	0.0	1500	258	0	51	0.52	0	63.4	58.7	41.1	24.5	24.5
7-8 PM	181	0.0	36	0.0	1500	181	0	36	0.52	0	63.6	58.9	41.4	24.6	24.6
8-9 PM	153	0.0	30	0.0	1500	153	0	30	0.51	0	63.6	59.0	41.5	24.6	24.6
9-10 PM	129	0.0	25	0.0	1500	129	0	25	0.51	0	63.7	59.1	41.5	24.7	24.7
10-11 PM	77	0.0	15	0.0	1500	77	0	15	0.51	0	63.8	59.2	41.7	24.7	24.7
11PM-MID	62	0.0	12	0.0	1500	62	0	12	0.50	0	63.8	59.2	41.8	24.8	24.8

*----- SITE BREAKDOWN DELAYS -----*	
BREAKDOWN DURATION (MINS)	0
RANGE OF QUEUE DELAY - MIN	0.0
(VEH-H) MAX	0.0
RANGE OF DIVN DELAY - MIN	0.0
(VEH-H) MAX	0.0
AV BREAKDOWNS PER DAY	0.00
AV QUEUE DELAY/DAY (VEH-H)	0.0
AV DIVN DELAY/DAY (VEH-H)	0.0
AV TOTAL DELAY/DAY (VEH-H)	0.0

*----- SITE ACCIDENT DELAYS -----*	
ACCIDENT DURATION (MINS)	0
RANGE OF QUEUE DELAY - MIN	0.0
(VEH-H) MAX	0.0
RANGE OF DIVN DELAY - MIN	0.0
(VEH-H) MAX	0.0
AV ACCIDENTS PER DAY	0.00
AV QUEUE DELAY/DAY (VEH-H)	0.0
AV DIVN DELAY/DAY (VEH-H)	0.0
AV TOTAL DELAY/DAY (VEH-H)	0.0

AVERAGE ACCIDENT NUMBERS (PIA/DAY)	
MAIN ROUTE WITHOUT WORKS	0.0060
MAIN ROUTE WITH WORKS	0.0066
DIVERSION	0.0121

PIA: Personal Injury Accidents

IMPACTS ON ROAD USERS	
ROAD USER COSTS PER DAY ( DOLLARS)	\$553
CONGESTED HOURS PER DAY*	0

\*Delays Exceeding 15 Minutes

**USH 45: USH 10 TO STH 116 (WINNEBAGO COUNTY)  
 CONTINUOUS (24 HOUR) CLOSURE  
 DIVERSION ROUTE: STH 116 - CTH M - CTH II**

**OCTOBER**  
 Analyzed for 2009  
 Construction Season

**GRAPHICAL REPRESENTATION OF TRAFFIC MODEL INPUT AND OUTPUT**  
**MON-THUR NORTHBOUND DIRECTION**

