

**USH 45: USH 10 TO STH 116 (WINNEBAGO COUNTY)
CONTINUOUS (24 HOUR) CLOSURE
DIVERSION ROUTE: STH 116 - CTH M - CTH II**

OCTOBER

Analyzed for 2009
Construction Season

SUMMARY OF TRAFFIC MODEL OUTPUT

FRIDAY SOUTHBOUND DIRECTION

TIME OF DAY	FLOWS AND CAPACITY IN VEH/HR						AVERAGE SPEEDS IN MPH								
	MAIN ROUTE		ALTERNATE ROUTE		SITE CAPA CITY	FLOW MAIN ROUTE	FLOW DIVER -TING	TOTAL DIVN FLOW	AV.DEL PER VEH (MINS)	AVERAGE QUEUE (VEH)	MAIN ROUTE		ALTERNATE ROUTE		
	DEMAND FLOW	PCT HEAVY	NORMAL FLOW	PCT HEAVY							WITHOUT WORK ZN	WITH WORK ZN	SITE	WITHOUT WORK ZN	WITH WORK ZN
MID-1 AM	35	0.0	6	0.0	1500	35	0	6	0.50	0	63.8	59.3	41.9	24.8	24.8
1-2 AM	22	0.0	4	0.0	1500	22	0	4	0.50	0	63.8	59.4	41.9	24.8	24.8
2-3 AM	27	0.0	5	0.0	1500	27	0	5	0.50	0	63.8	59.3	41.9	24.8	24.8
3-4 AM	55	0.0	11	0.0	1500	55	0	11	0.50	0	63.8	59.2	41.8	24.8	24.8
4-5 AM	86	0.0	17	0.0	1500	86	0	17	0.51	0	63.7	59.2	41.7	24.7	24.7
5-6 AM	177	0.0	36	0.0	1500	177	0	36	0.52	0	63.6	59.0	41.4	24.6	24.6
6-7 AM	281	0.0	56	0.0	1500	281	0	56	0.53	0	63.4	58.7	41.0	24.4	24.4
7-8 AM	377	0.0	75	0.0	1500	377	0	75	0.53	0	63.2	58.5	40.7	24.3	24.3
8-9 AM	309	0.0	62	0.0	1500	309	0	62	0.53	0	63.3	58.7	40.9	24.3	24.3
9-10 AM	316	0.0	63	0.0	1500	316	0	63	0.53	0	63.3	58.6	40.9	24.3	24.3
10-11 AM	339	0.0	67	0.0	1500	339	0	67	0.53	0	63.3	58.6	40.8	24.3	24.3
11A-NOON	341	0.0	68	0.0	1500	341	0	68	0.53	0	63.3	58.6	40.8	24.3	24.3
NOON-1PM	375	0.0	75	0.0	1500	375	0	75	0.53	0	63.2	58.5	40.7	24.3	24.3
1-2 PM	424	0.0	84	0.0	1500	424	0	84	0.54	0	63.1	58.4	40.6	24.2	24.2
2-3 PM	475	0.0	94	0.0	1500	475	0	94	0.54	0	63.0	58.2	40.4	24.1	24.1
3-4 PM	488	0.0	97	0.0	1500	488	0	97	0.54	0	63.0	58.2	40.3	24.1	24.1
4-5 PM	532	0.0	106	0.0	1500	532	0	106	0.55	0	62.9	58.1	40.2	24.0	24.0
5-6 PM	462	0.0	92	0.0	1500	462	0	92	0.54	0	63.0	58.3	40.4	24.2	24.2
6-7 PM	359	0.0	71	0.0	1500	359	0	71	0.53	0	63.2	58.6	40.7	24.3	24.3
7-8 PM	249	0.0	50	0.0	1500	249	0	50	0.52	0	63.5	58.8	41.1	24.5	24.5
8-9 PM	184	0.0	37	0.0	1500	184	0	37	0.52	0	63.5	58.9	41.4	24.5	24.5
9-10 PM	162	0.0	32	0.0	1500	162	0	32	0.51	0	63.6	59.0	41.4	24.6	24.6
10-11 PM	118	0.0	24	0.0	1500	118	0	24	0.51	0	63.7	59.1	41.6	24.7	24.7
11PM-MID	62	0.0	12	0.0	1500	62	0	12	0.50	0	63.8	59.2	41.8	24.8	24.8

----- SITE BREAKDOWN DELAYS -----	
BREAKDOWN DURATION (MINS)	0
RANGE OF QUEUE DELAY - MIN (VEH-H) MAX	0.0
RANGE OF DIVN DELAY - MIN (VEH-H) MAX	0.0
AV BREAKDOWNS PER DAY	0.00
AV QUEUE DELAY/DAY (VEH-H)	0.0
AV DIVN DELAY/DAY (VEH-H)	0.0
AV TOTAL DELAY/DAY (VEH-H)	0.0

----- SITE ACCIDENT DELAYS -----	
ACCIDENT DURATION (MINS)	0
RANGE OF QUEUE DELAY - MIN (VEH-H) MAX	0.0
RANGE OF DIVN DELAY - MIN (VEH-H) MAX	0.0
AV ACCIDENTS PER DAY	0.00
AV QUEUE DELAY/DAY (VEH-H)	0.0
AV DIVN DELAY/DAY (VEH-H)	0.0
AV TOTAL DELAY/DAY (VEH-H)	0.0

AVERAGE ACCIDENT NUMBERS (PIA/DAY)	
MAIN ROUTE WITHOUT WORKS	0.0072
MAIN ROUTE WITH WORKS	0.0079
DIVERSION	0.0145

PIA: Personal Injury Accidents

IMPACTS ON ROAD USERS	
ROAD USER COSTS PER DAY (DOLLARS)	\$694
CONGESTED HOURS PER DAY*	0

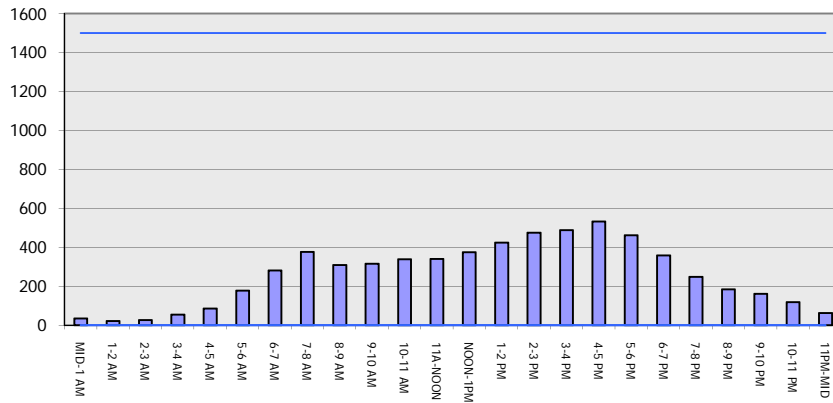
*Delays Exceeding 15 Minutes

**USH 45: USH 10 TO STH 116 (WINNEBAGO COUNTY)
 CONTINUOUS (24 HOUR) CLOSURE
 DIVERSION ROUTE: STH 116 - CTH M - CTH II**

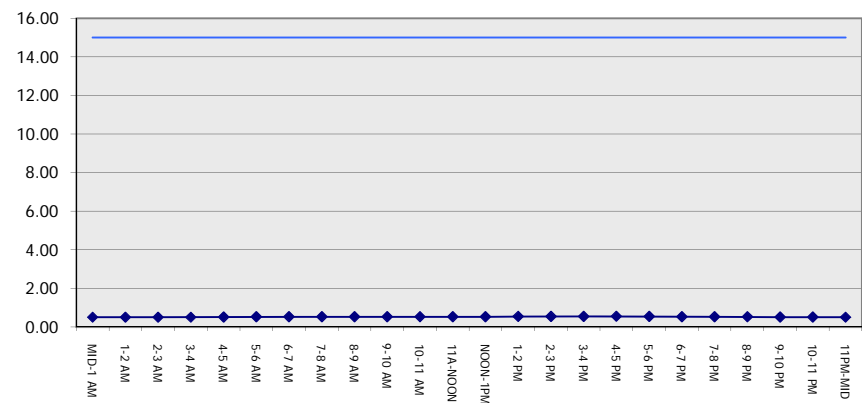
OCTOBER
 Analyzed for 2009
 Construction Season

GRAPHICAL REPRESENTATION OF TRAFFIC MODEL INPUT AND OUTPUT
FRIDAY SOUTHBOUND DIRECTION

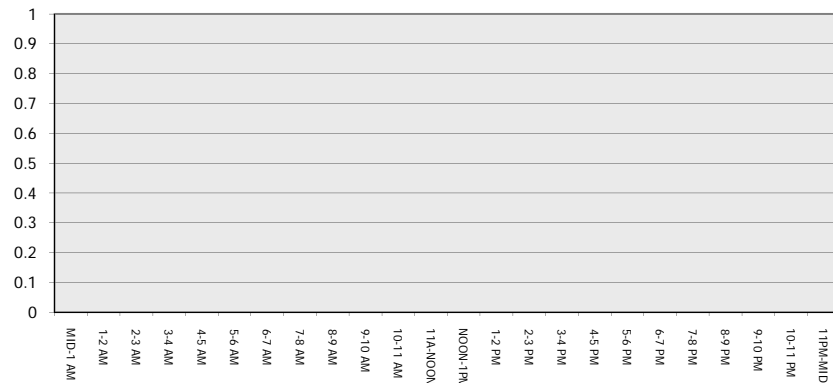
Main Route - Traffic Demand (Vehicles Per Hour)



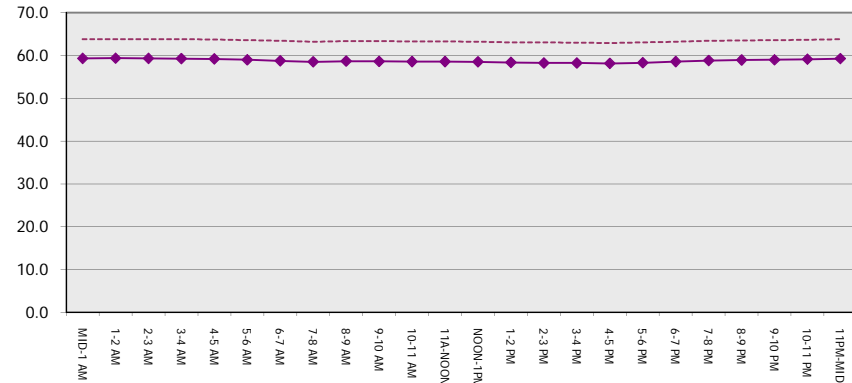
Main Route Average Delay Per Vehicle (Minutes)



Main Route - Average Queue Length (Vehicles)



Main Route - Average Speed (MPH)



USH 45: USH 10 TO STH 116 (WINNEBAGO COUNTY) CONTINUOUS (24 HOUR) CLOSURE DIVERSION ROUTE: STH 116 - CTH M - CTH II	OCTOBER
	Analyzed for 2009 Construction Season

SUMMARY OF TRAFFIC MODEL OUTPUT

FRIDAY NORTHBOUND DIRECTION

TIME OF DAY	FLOWS AND CAPACITY IN VEH/HR								AVERAGE SPEEDS IN MPH						
	MAIN		DIVERSION		SITE CAPA CITY	FLOW MAIN ROUTE	FLOW DIVER -TING	TOTAL DIVN FLOW	AV.DEL PER VEH (MINS)	AVERAGE QUEUE (VEH)	MAIN ROUTE		SITE	ALTERNATE ROUTE	
	DEMAND FLOW	PCT HEAVY	NORMAL FLOW	PCT HEAVY							WITHOUT WORK ZN	WITH WORK ZN		WITHOUT WORK ZN	WITH WORK ZN
MID-1 AM	41	0.0	9	0.0	1500	41	0	9	0.50	0	63.8	59.3	41.9	24.8	24.8
1-2 AM	32	0.0	6	0.0	1500	32	0	6	0.50	0	63.8	59.3	41.9	24.8	24.8
2-3 AM	38	0.0	8	0.0	1500	38	0	8	0.50	0	63.8	59.3	41.9	24.8	24.8
3-4 AM	44	0.0	9	0.0	1500	44	0	9	0.50	0	63.8	59.3	41.9	24.8	24.8
4-5 AM	78	0.0	15	0.0	1500	78	0	15	0.51	0	63.8	59.2	41.7	24.7	24.7
5-6 AM	154	0.0	30	0.0	1500	154	0	30	0.51	0	63.6	59.0	41.5	24.6	24.6
6-7 AM	289	0.0	57	0.0	1500	289	0	57	0.53	0	63.3	58.7	41.0	24.4	24.4
7-8 AM	392	0.0	78	0.0	1500	392	0	78	0.54	0	63.2	58.4	40.7	24.2	24.2
8-9 AM	364	0.0	72	0.0	1500	364	0	72	0.53	0	63.2	58.5	40.7	24.3	24.3
9-10 AM	437	0.0	86	0.0	1500	437	0	86	0.54	0	63.1	58.4	40.5	24.2	24.2
10-11 AM	474	0.0	94	0.0	1500	474	0	94	0.54	0	63.0	58.2	40.4	24.1	24.1
11A-NOON	501	0.0	99	0.0	1500	501	0	99	0.55	0	63.0	58.2	40.3	24.1	24.1
NOON-1PM	516	0.0	103	0.0	1500	516	0	103	0.55	0	63.0	58.2	40.2	24.0	24.0
1-2 PM	619	0.0	123	0.0	1500	619	0	123	0.56	0	62.7	57.9	39.9	23.9	23.9
2-3 PM	736	0.0	146	0.0	1500	736	0	146	0.57	0	62.5	57.6	39.6	23.7	23.7
3-4 PM	798	0.0	159	0.0	1500	798	0	159	0.57	0	62.4	57.5	39.4	23.6	23.6
4-5 PM	921	0.0	183	0.0	1500	921	0	183	0.59	0	62.2	57.2	38.9	23.4	23.4
5-6 PM	903	0.0	179	0.0	1500	903	0	179	0.58	0	62.2	57.3	39.0	23.5	23.5
6-7 PM	721	0.0	144	0.0	1500	721	0	144	0.57	0	62.5	57.7	39.6	23.7	23.7
7-8 PM	530	0.0	105	0.0	1500	530	0	105	0.55	0	62.9	58.1	40.2	24.0	24.0
8-9 PM	337	0.0	67	0.0	1500	337	0	67	0.53	0	63.3	58.6	40.9	24.3	24.3
9-10 PM	241	0.0	48	0.0	1500	241	0	48	0.52	0	63.5	58.8	41.2	24.5	24.5
10-11 PM	152	0.0	30	0.0	1500	152	0	30	0.51	0	63.6	59.1	41.5	24.6	24.6
11PM-MID	112	0.0	23	0.0	1500	112	0	23	0.51	0	63.7	59.1	41.6	24.7	24.7

----- SITE BREAKDOWN DELAYS -----	
BREAKDOWN DURATION (MINS)	0
RANGE OF QUEUE DELAY - MIN	0.0
(VEH-H) MAX	0.0
RANGE OF DIVN DELAY - MIN	0.0
(VEH-H) MAX	0.0
AV BREAKDOWNS PER DAY	0.00
AV QUEUE DELAY/DAY (VEH-H)	0.0
AV DIVN DELAY/DAY (VEH-H)	0.0
AV TOTAL DELAY/DAY (VEH-H)	0.0

----- SITE ACCIDENT DELAYS -----	
ACCIDENT DURATION (MINS)	0
RANGE OF QUEUE DELAY - MIN	0.0
(VEH-H) MAX	0.0
RANGE OF DIVN DELAY - MIN	0.0
(VEH-H) MAX	0.0
AV ACCIDENTS PER DAY	0.00
AV QUEUE DELAY/DAY (VEH-H)	0.0
AV DIVN DELAY/DAY (VEH-H)	0.0
AV TOTAL DELAY/DAY (VEH-H)	0.0

AVERAGE ACCIDENT NUMBERS (PIA/DAY)	
MAIN ROUTE WITHOUT WORKS	0.0109
MAIN ROUTE WITH WORKS	0.0119
DIVERSION	0.0218

PIA: Personal Injury Accidents

IMPACTS ON ROAD USERS	
ROAD USER COSTS PER DAY (DOLLARS)	\$1,093
CONGESTED HOURS PER DAY*	0

*Delays Exceeding 15 Minutes

**USH 45: USH 10 TO STH 116 (WINNEBAGO COUNTY)
 CONTINUOUS (24 HOUR) CLOSURE
 DIVERSION ROUTE: STH 116 - CTH M - CTH II**

OCTOBER
 Analyzed for 2009
 Construction Season

GRAPHICAL REPRESENTATION OF TRAFFIC MODEL INPUT AND OUTPUT
FRIDAY NORTHBOUND DIRECTION

