

**USH 45: USH 10 TO STH 116 (WINNEBAGO COUNTY)
CONTINUOUS (24 HOUR) CLOSURE
DIVERSION ROUTE: STH 116 - CTH M - CTH II**

MAY
Analyzed for 2009
Construction Season

SUMMARY OF TRAFFIC MODEL OUTPUT

SUNDAY SOUTHBOUND DIRECTION

TIME OF DAY	FLOWS AND CAPACITY IN VEH/HR								AVERAGE SPEEDS IN MPH						
	MAIN ROUTE		ALTERNATE ROUTE		SITE CAPA CITY	FLOW MAIN ROUTE	FLOW DIVER -TING	TOTAL DIVN FLOW	AV.DEL PER VEH (MINS)	AVERAGE QUEUE (VEH)	MAIN ROUTE		ALTERNATE ROUTE		
	DEMAND FLOW	PCT HEAVY	NORMAL FLOW	PCT HEAVY							WITHOUT WORK ZN	WITH WORK ZN	SITE	WITHOUT WORK ZN	WITH WORK ZN
MID-1 AM	41	0.0	8	0.0	1500	41	0	8	0.50	0	63.8	59.3	41.9	24.8	24.8
1-2 AM	33	0.0	6	0.0	1500	33	0	6	0.50	0	63.8	59.3	41.9	24.8	24.8
2-3 AM	23	0.0	4	0.0	1500	23	0	4	0.50	0	63.8	59.4	41.9	24.8	24.8
3-4 AM	15	0.0	3	0.0	1500	15	0	3	0.50	0	63.9	59.4	41.9	24.8	24.8
4-5 AM	25	0.0	4	0.0	1500	25	0	4	0.50	0	63.8	59.3	41.9	24.8	24.8
5-6 AM	42	0.0	9	0.0	1500	42	0	9	0.50	0	63.8	59.3	41.9	24.8	24.8
6-7 AM	70	0.0	14	0.0	1500	70	0	14	0.51	0	63.8	59.2	41.7	24.7	24.7
7-8 AM	136	0.0	27	0.0	1500	136	0	27	0.51	0	63.7	59.1	41.5	24.7	24.7
8-9 AM	251	0.0	50	0.0	1500	251	0	50	0.52	0	63.4	58.8	41.1	24.5	24.5
9-10 AM	392	0.0	78	0.0	1500	392	0	78	0.54	0	63.2	58.4	40.7	24.2	24.2
10-11 AM	515	0.0	103	0.0	1500	515	0	103	0.55	0	63.0	58.2	40.2	24.0	24.0
11A-NOON	600	0.0	119	0.0	1500	600	0	119	0.56	0	62.8	57.9	40.0	23.9	23.9
NOON-1PM	663	0.0	132	0.0	1500	663	0	132	0.56	0	62.7	57.8	39.7	23.8	23.8
1-2 PM	655	0.0	130	0.0	1500	655	0	130	0.56	0	62.7	57.8	39.8	23.8	23.8
2-3 PM	749	0.0	149	0.0	1500	749	0	149	0.57	0	62.5	57.6	39.5	23.7	23.7
3-4 PM	792	0.0	157	0.0	1500	792	0	157	0.57	0	62.4	57.5	39.4	23.7	23.7
4-5 PM	750	0.0	149	0.0	1500	750	0	149	0.57	0	62.5	57.6	39.5	23.7	23.7
5-6 PM	674	0.0	134	0.0	1500	674	0	134	0.56	0	62.7	57.8	39.7	23.8	23.8
6-7 PM	552	0.0	109	0.0	1500	552	0	109	0.55	0	62.8	58.1	40.1	24.0	24.0
7-8 PM	452	0.0	90	0.0	1500	452	0	90	0.54	0	63.0	58.3	40.4	24.2	24.2
8-9 PM	330	0.0	66	0.0	1500	330	0	66	0.53	0	63.3	58.6	40.9	24.3	24.3
9-10 PM	219	0.0	43	0.0	1500	219	0	43	0.52	0	63.5	58.9	41.2	24.5	24.5
10-11 PM	130	0.0	26	0.0	1500	130	0	26	0.51	0	63.7	59.1	41.5	24.7	24.7
11PM-MID	61	0.0	12	0.0	1500	61	0	12	0.50	0	63.8	59.2	41.8	24.8	24.8

----- SITE BREAKDOWN DELAYS -----	
BREAKDOWN DURATION (MINS)	0
RANGE OF QUEUE DELAY - MIN (VEH-H) MAX	0.0
RANGE OF DIVN DELAY - MIN (VEH-H) MAX	0.0
AV BREAKDOWNS PER DAY	0.00
AV QUEUE DELAY/DAY (VEH-H)	0.0
AV DIVN DELAY/DAY (VEH-H)	0.0
AV TOTAL DELAY/DAY (VEH-H)	0.0

----- SITE ACCIDENT DELAYS -----	
ACCIDENT DURATION (MINS)	0
RANGE OF QUEUE DELAY - MIN (VEH-H) MAX	0.0
RANGE OF DIVN DELAY - MIN (VEH-H) MAX	0.0
AV ACCIDENTS PER DAY	0.00
AV QUEUE DELAY/DAY (VEH-H)	0.0
AV DIVN DELAY/DAY (VEH-H)	0.0
AV TOTAL DELAY/DAY (VEH-H)	0.0

AVERAGE ACCIDENT NUMBERS (PIA/DAY)	
MAIN ROUTE WITHOUT WORKS	0.0094
MAIN ROUTE WITH WORKS	0.0103
DIVERSION	0.0189

PIA: Personal Injury Accidents

IMPACTS ON ROAD USERS	
ROAD USER COSTS PER DAY (DOLLARS)	\$1,174
CONGESTED HOURS PER DAY*	0

*Delays Exceeding 15 Minutes

**USH 45: USH 10 TO STH 116 (WINNEBAGO COUNTY)
CONTINUOUS (24 HOUR) CLOSURE
DIVERSION ROUTE: STH 116 - CTH M - CTH II**

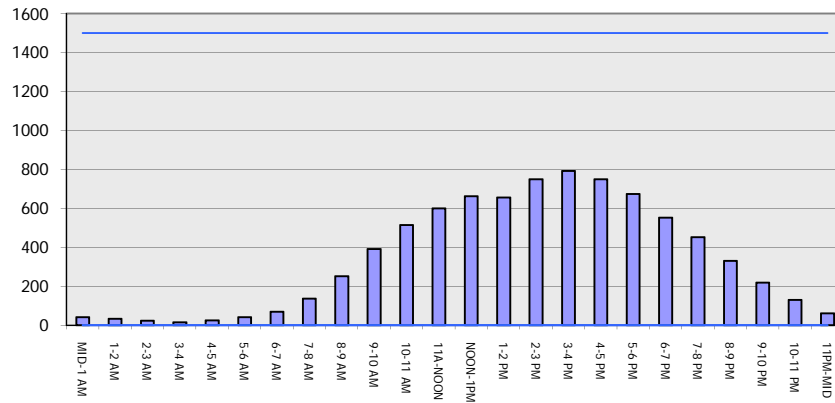
MAY

Analyzed for 2009
Construction Season

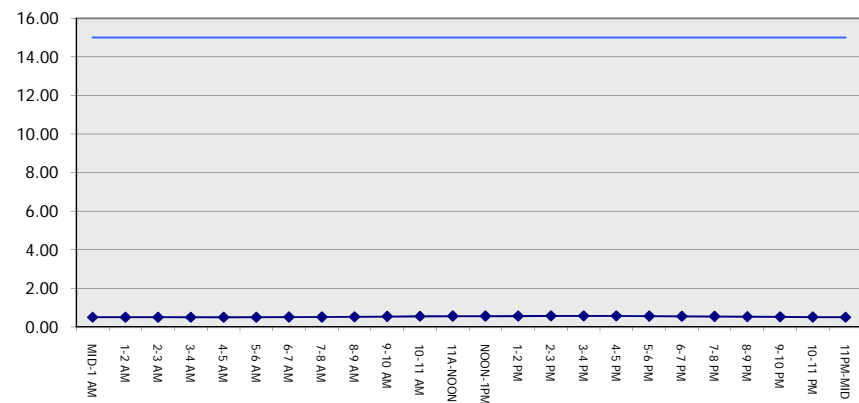
GRAPHICAL REPRESENTATION OF TRAFFIC MODEL INPUT AND OUTPUT

SUNDAY SOUTHBOUND DIRECTION

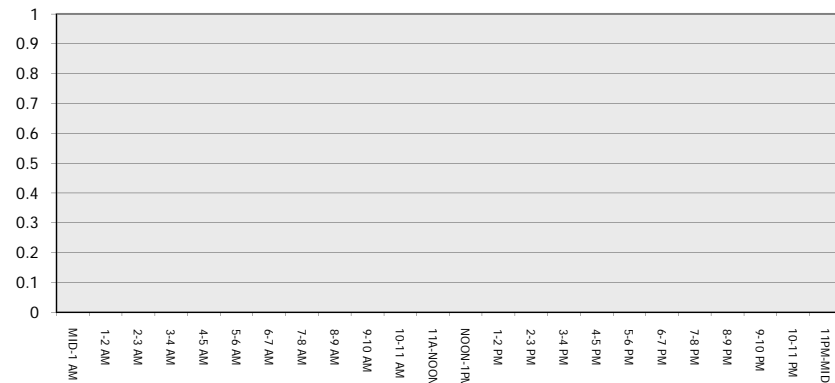
Main Route - Traffic Demand (Vehicles Per Hour)



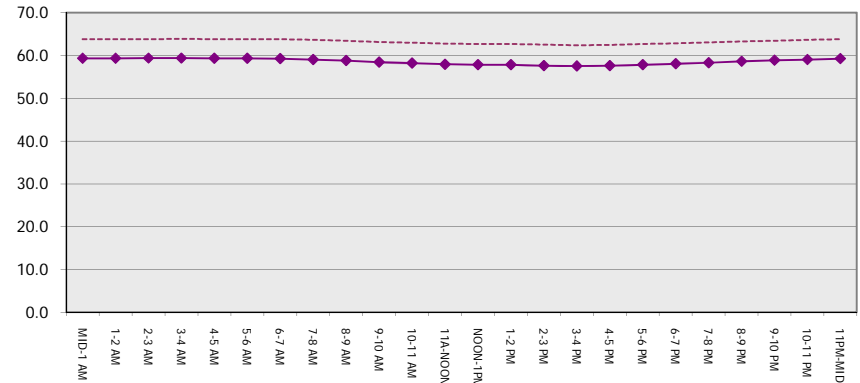
Main Route Average Delay Per Vehicle (Minutes)



Main Route - Average Queue Length (Vehicles)



Main Route - Average Speed (MPH)



USH 45: USH 10 TO STH 116 (WINNEBAGO COUNTY) CONTINUOUS (24 HOUR) CLOSURE DIVERSION ROUTE: STH 116 - CTH M - CTH II	MAY
	Analyzed for 2009 Construction Season

SUMMARY OF TRAFFIC MODEL OUTPUT

SUNDAY NORTHBOUND DIRECTION

TIME OF DAY	FLOWS AND CAPACITY IN VEH/HR								AVERAGE SPEEDS IN MPH						
	MAIN		DIVERSION		SITE CAPA CITY	FLOW MAIN ROUTE	FLOW DIVER -TING	TOTAL DIVN FLOW	AV.DEL PER VEH (MINS)	AVERAGE QUEUE (VEH)	MAIN ROUTE		SITE	ALTERNATE ROUTE	
	DEMAND FLOW	PCT HEAVY	NORMAL FLOW	PCT HEAVY							WITHOUT WORK ZN	WITH WORK ZN		WITHOUT WORK ZN	WITH WORK ZN
MID-1 AM	44	0.0	9	0.0	1500	44	0	9	0.50	0	63.8	59.3	41.9	24.8	24.8
1-2 AM	31	0.0	6	0.0	1500	31	0	6	0.50	0	63.8	59.3	41.9	24.8	24.8
2-3 AM	24	0.0	4	0.0	1500	24	0	4	0.50	0	63.8	59.4	41.9	24.8	24.8
3-4 AM	20	0.0	4	0.0	1500	20	0	4	0.50	0	63.8	59.4	41.9	24.8	24.8
4-5 AM	20	0.0	3	0.0	1500	20	0	3	0.50	0	63.8	59.4	41.9	24.8	24.8
5-6 AM	47	0.0	10	0.0	1500	47	0	10	0.50	0	63.8	59.3	41.9	24.8	24.8
6-7 AM	64	0.0	13	0.0	1500	64	0	13	0.50	0	63.8	59.2	41.8	24.7	24.7
7-8 AM	131	0.0	26	0.0	1500	131	0	26	0.51	0	63.7	59.1	41.5	24.7	24.7
8-9 AM	206	0.0	41	0.0	1500	206	0	41	0.52	0	63.5	58.9	41.3	24.5	24.5
9-10 AM	316	0.0	63	0.0	1500	316	0	63	0.53	0	63.3	58.6	40.9	24.3	24.3
10-11 AM	344	0.0	68	0.0	1500	344	0	68	0.53	0	63.3	58.6	40.8	24.3	24.3
11A-NOON	408	0.0	81	0.0	1500	408	0	81	0.54	0	63.2	58.4	40.6	24.2	24.2
NOON-1PM	397	0.0	79	0.0	1500	397	0	79	0.54	0	63.2	58.4	40.6	24.2	24.2
1-2 PM	353	0.0	70	0.0	1500	353	0	70	0.53	0	63.2	58.6	40.8	24.3	24.3
2-3 PM	370	0.0	74	0.0	1500	370	0	74	0.53	0	63.2	58.5	40.7	24.3	24.3
3-4 PM	361	0.0	71	0.0	1500	361	0	71	0.53	0	63.2	58.6	40.7	24.3	24.3
4-5 PM	388	0.0	77	0.0	1500	388	0	77	0.54	0	63.2	58.4	40.7	24.3	24.3
5-6 PM	367	0.0	72	0.0	1500	367	0	72	0.53	0	63.2	58.5	40.7	24.3	24.3
6-7 PM	352	0.0	70	0.0	1500	352	0	70	0.53	0	63.2	58.6	40.8	24.3	24.3
7-8 PM	286	0.0	56	0.0	1500	286	0	56	0.53	0	63.3	58.7	41.0	24.4	24.4
8-9 PM	206	0.0	41	0.0	1500	206	0	41	0.52	0	63.5	58.9	41.3	24.5	24.5
9-10 PM	149	0.0	29	0.0	1500	149	0	29	0.51	0	63.7	59.1	41.5	24.6	24.6
10-11 PM	81	0.0	16	0.0	1500	81	0	16	0.51	0	63.8	59.2	41.7	24.7	24.7
11PM-MID	43	0.0	9	0.0	1500	43	0	9	0.50	0	63.8	59.3	41.9	24.8	24.8

----- SITE BREAKDOWN DELAYS -----	
BREAKDOWN DURATION (MINS)	0
RANGE OF QUEUE DELAY - MIN	0.0
(VEH-H) MAX	0.0
RANGE OF DIVN DELAY - MIN	0.0
(VEH-H) MAX	0.0
AV BREAKDOWNS PER DAY	0.00
AV QUEUE DELAY/DAY (VEH-H)	0.0
AV DIVN DELAY/DAY (VEH-H)	0.0
AV TOTAL DELAY/DAY (VEH-H)	0.0

----- SITE ACCIDENT DELAYS -----	
ACCIDENT DURATION (MINS)	0
RANGE OF QUEUE DELAY - MIN	0.0
(VEH-H) MAX	0.0
RANGE OF DIVN DELAY - MIN	0.0
(VEH-H) MAX	0.0
AV ACCIDENTS PER DAY	0.00
AV QUEUE DELAY/DAY (VEH-H)	0.0
AV DIVN DELAY/DAY (VEH-H)	0.0
AV TOTAL DELAY/DAY (VEH-H)	0.0

AVERAGE ACCIDENT NUMBERS (PIA/DAY)	
MAIN ROUTE WITHOUT WORKS	0.0058
MAIN ROUTE WITH WORKS	0.0063
DIVERSION	0.0116

PIA: Personal Injury Accidents

IMPACTS ON ROAD USERS	
ROAD USER COSTS PER DAY (DOLLARS)	\$689
CONGESTED HOURS PER DAY*	0

*Delays Exceeding 15 Minutes

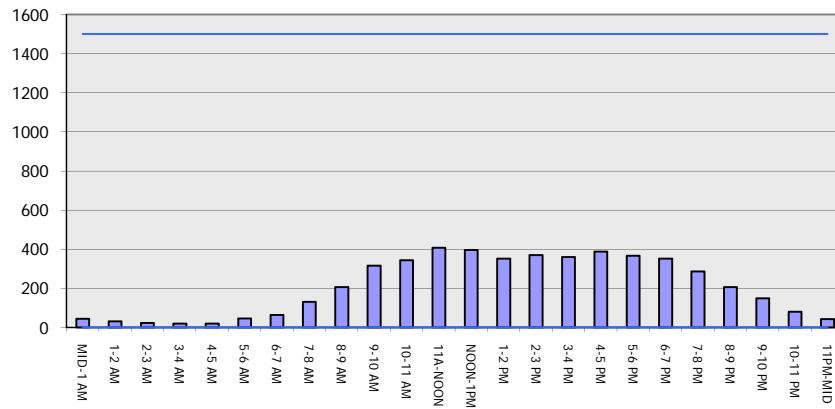
**USH 45: USH 10 TO STH 116 (WINNEBAGO COUNTY)
 CONTINUOUS (24 HOUR) CLOSURE
 DIVERSION ROUTE: STH 116 - CTH M - CTH II**

MAY
 Analyzed for 2009
 Construction Season

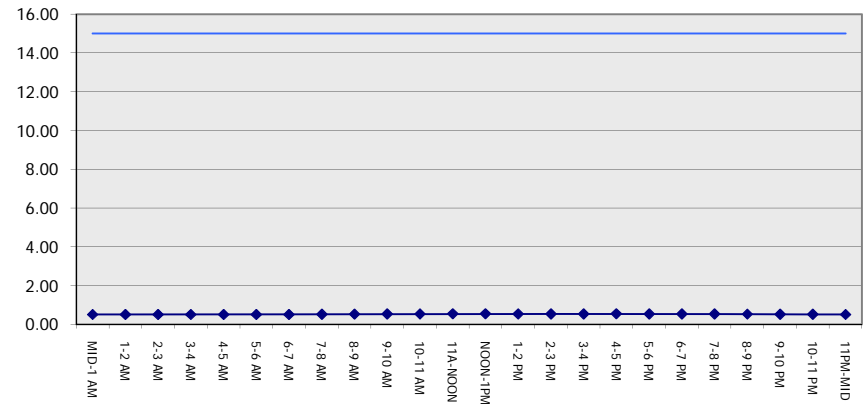
GRAPHICAL REPRESENTATION OF TRAFFIC MODEL INPUT AND OUTPUT

SUNDAY NORTHBOUND DIRECTION

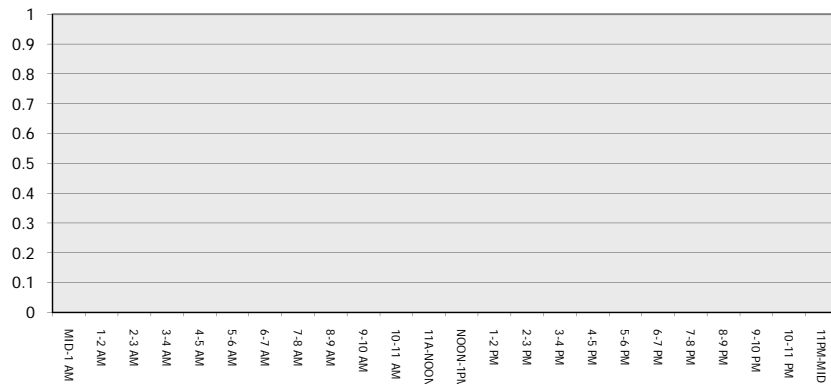
Main Route - Traffic Demand (Vehicles Per Hour)



Main Route Average Delay Per Vehicle (Minutes)



Main Route - Average Queue Length (Vehicles)



Main Route - Average Speed (MPH)

