

**USH 45: USH 10 TO STH 116 (WINNEBAGO COUNTY)
CONTINUOUS (24 HOUR) CLOSURE
DIVERSION ROUTE: STH 116 - CTH M - CTH II**

MAY
Analyzed for 2009
Construction Season

SUMMARY OF TRAFFIC MODEL OUTPUT

FRIDAY SOUTHBOUND DIRECTION

TIME OF DAY	FLOWS AND CAPACITY IN VEH/HR						AVERAGE SPEEDS IN MPH								
	MAIN ROUTE		ALTERNATE ROUTE		SITE CAPA CITY	FLOW MAIN ROUTE	FLOW DIVER -TING	TOTAL DIVN FLOW	AV.DEL PER VEH (MINS)	AVERAGE QUEUE (VEH)	MAIN ROUTE		ALTERNATE ROUTE		
	DEMAND FLOW	PCT HEAVY	NORMAL FLOW	PCT HEAVY							WITHOUT WORK ZN	WITH WORK ZN	SITE	WITHOUT WORK ZN	WITH WORK ZN
MID-1 AM	28	0.0	5	0.0	1500	28	0	5	0.50	0	63.8	59.3	41.9	24.8	24.8
1-2 AM	29	0.0	5	0.0	1500	29	0	5	0.50	0	63.8	59.3	41.9	24.8	24.8
2-3 AM	25	0.0	4	0.0	1500	25	0	4	0.50	0	63.8	59.3	41.9	24.8	24.8
3-4 AM	44	0.0	9	0.0	1500	44	0	9	0.50	0	63.8	59.3	41.9	24.8	24.8
4-5 AM	85	0.0	17	0.0	1500	85	0	17	0.51	0	63.7	59.2	41.7	24.7	24.7
5-6 AM	150	0.0	30	0.0	1500	150	0	30	0.51	0	63.6	59.1	41.5	24.6	24.6
6-7 AM	270	0.0	53	0.0	1500	270	0	53	0.52	0	63.4	58.7	41.0	24.4	24.4
7-8 AM	394	0.0	78	0.0	1500	394	0	78	0.54	0	63.2	58.4	40.6	24.2	24.2
8-9 AM	305	0.0	61	0.0	1500	305	0	61	0.53	0	63.3	58.7	40.9	24.4	24.4
9-10 AM	309	0.0	62	0.0	1500	309	0	62	0.53	0	63.3	58.7	40.9	24.3	24.3
10-11 AM	313	0.0	62	0.0	1500	313	0	62	0.53	0	63.3	58.6	40.9	24.3	24.3
11A-NOON	308	0.0	62	0.0	1500	308	0	62	0.53	0	63.3	58.7	40.9	24.3	24.3
NOON-1PM	340	0.0	67	0.0	1500	340	0	67	0.53	0	63.3	58.6	40.8	24.3	24.3
1-2 PM	383	0.0	76	0.0	1500	383	0	76	0.54	0	63.2	58.5	40.7	24.3	24.3
2-3 PM	429	0.0	85	0.0	1500	429	0	85	0.54	0	63.1	58.4	40.6	24.2	24.2
3-4 PM	436	0.0	87	0.0	1500	436	0	87	0.54	0	63.1	58.4	40.5	24.2	24.2
4-5 PM	512	0.0	102	0.0	1500	512	0	102	0.55	0	63.0	58.2	40.2	24.0	24.0
5-6 PM	465	0.0	92	0.0	1500	465	0	92	0.54	0	63.0	58.3	40.4	24.2	24.2
6-7 PM	365	0.0	72	0.0	1500	365	0	72	0.53	0	63.2	58.5	40.7	24.3	24.3
7-8 PM	257	0.0	51	0.0	1500	257	0	51	0.52	0	63.4	58.7	41.1	24.5	24.5
8-9 PM	188	0.0	38	0.0	1500	188	0	38	0.52	0	63.5	58.9	41.4	24.5	24.5
9-10 PM	152	0.0	30	0.0	1500	152	0	30	0.51	0	63.6	59.1	41.5	24.6	24.6
10-11 PM	113	0.0	23	0.0	1500	113	0	23	0.51	0	63.7	59.1	41.6	24.7	24.7
11PM-MID	69	0.0	14	0.0	1500	69	0	14	0.51	0	63.8	59.2	41.7	24.7	24.7

----- SITE BREAKDOWN DELAYS -----	
BREAKDOWN DURATION (MINS)	0
RANGE OF QUEUE DELAY - MIN (VEH-H) MAX	0.0
RANGE OF DIVN DELAY - MIN (VEH-H) MAX	0.0
AV BREAKDOWNS PER DAY	0.00
AV QUEUE DELAY/DAY (VEH-H)	0.0
AV DIVN DELAY/DAY (VEH-H)	0.0
AV TOTAL DELAY/DAY (VEH-H)	0.0

----- SITE ACCIDENT DELAYS -----	
ACCIDENT DURATION (MINS)	0
RANGE OF QUEUE DELAY - MIN (VEH-H) MAX	0.0
RANGE OF DIVN DELAY - MIN (VEH-H) MAX	0.0
AV ACCIDENTS PER DAY	0.00
AV QUEUE DELAY/DAY (VEH-H)	0.0
AV DIVN DELAY/DAY (VEH-H)	0.0
AV TOTAL DELAY/DAY (VEH-H)	0.0

AVERAGE ACCIDENT NUMBERS (PIA/DAY)	
MAIN ROUTE WITHOUT WORKS	0.0069
MAIN ROUTE WITH WORKS	0.0075
DIVERSION	0.0138

PIA: Personal Injury Accidents

IMPACTS ON ROAD USERS	
ROAD USER COSTS PER DAY (DOLLARS)	\$663
CONGESTED HOURS PER DAY*	0

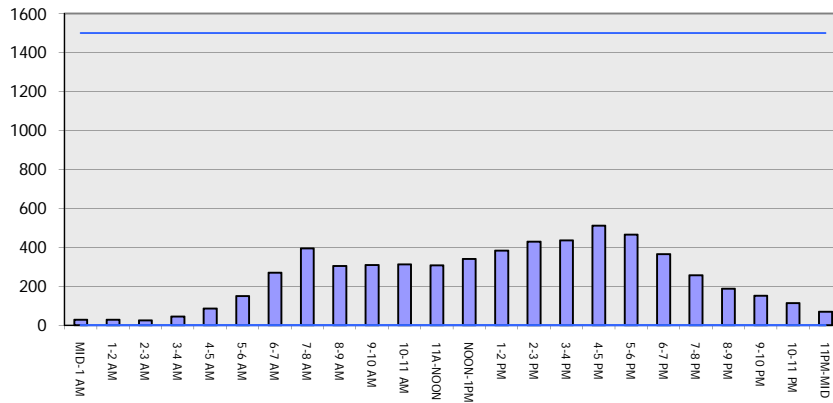
*Delays Exceeding 15 Minutes

**USH 45: USH 10 TO STH 116 (WINNEBAGO COUNTY)
 CONTINUOUS (24 HOUR) CLOSURE
 DIVERSION ROUTE: STH 116 - CTH M - CTH II**

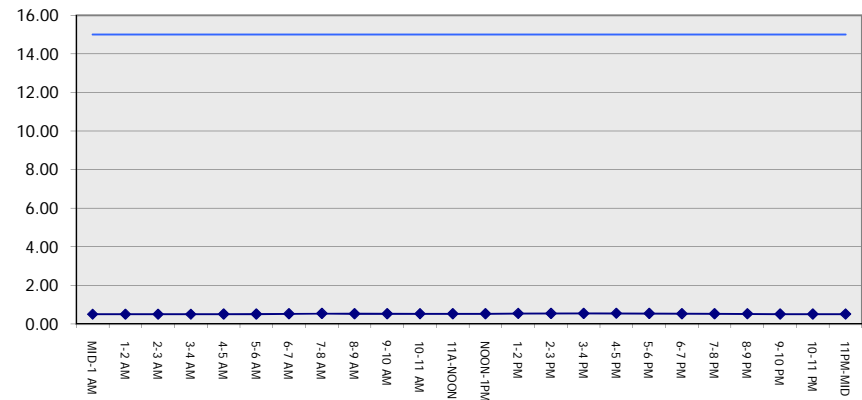
MAY
 Analyzed for 2009
 Construction Season

GRAPHICAL REPRESENTATION OF TRAFFIC MODEL INPUT AND OUTPUT
FRIDAY SOUTHBOUND DIRECTION

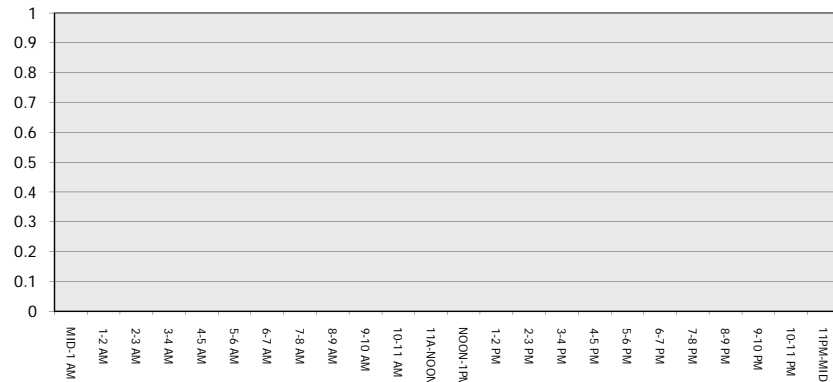
Main Route - Traffic Demand (Vehicles Per Hour)



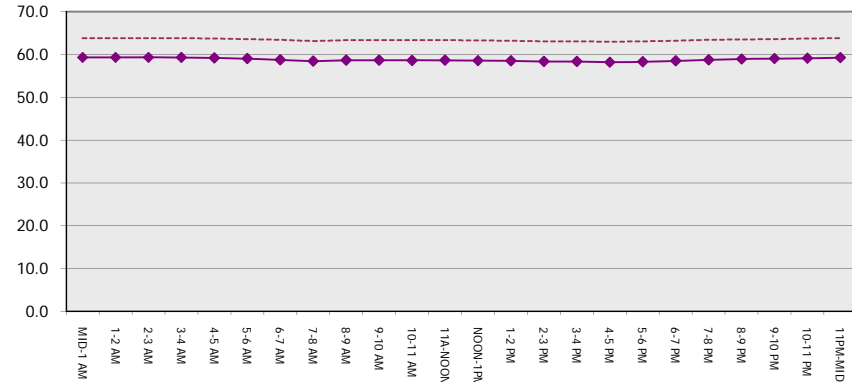
Main Route Average Delay Per Vehicle (Minutes)



Main Route - Average Queue Length (Vehicles)



Main Route - Average Speed (MPH)



USH 45: USH 10 TO STH 116 (WINNEBAGO COUNTY) CONTINUOUS (24 HOUR) CLOSURE DIVERSION ROUTE: STH 116 - CTH M - CTH II	MAY
	Analyzed for 2009 Construction Season

SUMMARY OF TRAFFIC MODEL OUTPUT

FRIDAY NORTHBOUND DIRECTION

TIME OF DAY	FLOWS AND CAPACITY IN VEH/HR									AVERAGE SPEEDS IN MPH					
	MAIN		DIVERSION		SITE CAPA CITY	FLOW MAIN ROUTE	FLOW DIVER -TING	TOTAL DIVN FLOW	AV.DEL PER VEH (MINS)	AVERAGE QUEUE (VEH)	MAIN ROUTE		SITE	ALTERNATE ROUTE	
	DEMAND FLOW	PCT HEAVY	NORMAL FLOW	PCT HEAVY							WITHOUT WORK ZN	WITH WORK ZN		WITHOUT WORK ZN	WITH WORK ZN
MID-1 AM	47	0.0	10	0.0	1500	47	0	10	0.50	0	63.8	59.3	41.9	24.8	24.8
1-2 AM	37	0.0	8	0.0	1500	37	0	8	0.50	0	63.8	59.3	41.9	24.8	24.8
2-3 AM	40	0.0	8	0.0	1500	40	0	8	0.50	0	63.8	59.3	41.9	24.8	24.8
3-4 AM	51	0.0	10	0.0	1500	51	0	10	0.50	0	63.8	59.2	41.8	24.8	24.8
4-5 AM	58	0.0	12	0.0	1500	58	0	12	0.50	0	63.8	59.2	41.8	24.8	24.8
5-6 AM	159	0.0	31	0.0	1500	159	0	31	0.51	0	63.6	59.0	41.4	24.6	24.6
6-7 AM	282	0.0	56	0.0	1500	282	0	56	0.53	0	63.4	58.7	41.0	24.4	24.4
7-8 AM	400	0.0	80	0.0	1500	400	0	80	0.54	0	63.2	58.4	40.6	24.2	24.2
8-9 AM	418	0.0	83	0.0	1500	418	0	83	0.54	0	63.1	58.4	40.6	24.2	24.2
9-10 AM	451	0.0	90	0.0	1500	451	0	90	0.54	0	63.0	58.3	40.4	24.2	24.2
10-11 AM	483	0.0	96	0.0	1500	483	0	96	0.54	0	63.0	58.2	40.4	24.1	24.1
11A-NOON	510	0.0	102	0.0	1500	510	0	102	0.55	0	63.0	58.2	40.2	24.0	24.0
NOON-1PM	514	0.0	102	0.0	1500	514	0	102	0.55	0	63.0	58.2	40.2	24.0	24.0
1-2 PM	610	0.0	121	0.0	1500	610	0	121	0.56	0	62.8	57.9	39.9	23.9	23.9
2-3 PM	724	0.0	144	0.0	1500	724	0	144	0.57	0	62.5	57.7	39.6	23.7	23.7
3-4 PM	761	0.0	151	0.0	1500	761	0	151	0.57	0	62.5	57.6	39.4	23.7	23.7
4-5 PM	872	0.0	173	0.0	1500	872	0	173	0.58	0	62.3	57.3	39.1	23.5	23.5
5-6 PM	867	0.0	172	0.0	1500	867	0	172	0.58	0	62.3	57.3	39.1	23.5	23.5
6-7 PM	753	0.0	149	0.0	1500	753	0	149	0.57	0	62.5	57.6	39.5	23.7	23.7
7-8 PM	721	0.0	143	0.0	1500	721	0	143	0.57	0	62.5	57.7	39.6	23.7	23.7
8-9 PM	556	0.0	110	0.0	1500	556	0	110	0.55	0	62.8	58.1	40.1	24.0	24.0
9-10 PM	297	0.0	59	0.0	1500	297	0	59	0.53	0	63.3	58.7	41.0	24.4	24.4
10-11 PM	190	0.0	38	0.0	1500	190	0	38	0.52	0	63.5	58.9	41.4	24.5	24.5
11PM-MID	138	0.0	27	0.0	1500	138	0	27	0.51	0	63.7	59.1	41.5	24.7	24.7

----- SITE BREAKDOWN DELAYS -----	
BREAKDOWN DURATION (MINS)	0
RANGE OF QUEUE DELAY - MIN	0.0
(VEH-H) MAX	0.0
RANGE OF DIVN DELAY - MIN	0.0
(VEH-H) MAX	0.0
AV BREAKDOWNS PER DAY	0.00
AV QUEUE DELAY/DAY (VEH-H)	0.0
AV DIVN DELAY/DAY (VEH-H)	0.0
AV TOTAL DELAY/DAY (VEH-H)	0.0

----- SITE ACCIDENT DELAYS -----	
ACCIDENT DURATION (MINS)	0
RANGE OF QUEUE DELAY - MIN	0.0
(VEH-H) MAX	0.0
RANGE OF DIVN DELAY - MIN	0.0
(VEH-H) MAX	0.0
AV ACCIDENTS PER DAY	0.00
AV QUEUE DELAY/DAY (VEH-H)	0.0
AV DIVN DELAY/DAY (VEH-H)	0.0
AV TOTAL DELAY/DAY (VEH-H)	0.0

AVERAGE ACCIDENT NUMBERS (PIA/DAY)	
MAIN ROUTE WITHOUT WORKS	0.0115
MAIN ROUTE WITH WORKS	0.0125
DIVERSION	0.0230

PIA: Personal Injury Accidents

IMPACTS ON ROAD USERS	
ROAD USER COSTS PER DAY (DOLLARS)	\$1,155
CONGESTED HOURS PER DAY*	0

*Delays Exceeding 15 Minutes

**USH 45: USH 10 TO STH 116 (WINNEBAGO COUNTY)
CONTINUOUS (24 HOUR) CLOSURE
DIVERSION ROUTE: STH 116 - CTH M - CTH II**

MAY
Analyzed for 2009
Construction Season

GRAPHICAL REPRESENTATION OF TRAFFIC MODEL INPUT AND OUTPUT
FRIDAY NORTHBOUND DIRECTION

