

<b>USH 41: STH 76 TO USH 45 (WINNEBAGO COUNTY)                  CONTINUOUS (24 HOUR) CLOSURE                  NO DIVERSION ROUTE (MAX QUEUE METHOD)</b>	<b>OCTOBER</b>
	Analyzed for 2009 Construction Season

**SUMMARY OF TRAFFIC MODEL OUTPUT**

SATURDAY SOUTHBOUND DIRECTION

TIME OF DAY	FLOWS AND CAPACITY IN VEH/HR						AVERAGE SPEEDS IN MPH			
	MAIN ROUTE		SITE CAPA CITY	FLOW		AV.DEL PER VEH (MINS)	AVERAGE QUEUE (VEH)	MAIN ROUTE		SITE
	DEMAND FLOW	PCT HEAVY		MAIN ROUTE	'DIVER TED'			WITHOUT WORK ZONE	WITH WORK ZONE	
MID-1 AM	258	0.0	1500	258	0	0.45	0	65.9	56.9	44.5
1-2 AM	168	0.0	1500	168	0	0.44	0	66.1	57.1	44.8
2-3 AM	152	0.0	1500	152	0	0.44	0	66.1	57.2	44.9
3-4 AM	133	0.0	1500	133	0	0.44	0	66.1	57.3	45.0
4-5 AM	202	0.0	1500	202	0	0.44	0	66.0	57.1	44.6
5-6 AM	348	0.0	1500	348	0	0.46	0	65.8	56.6	44.1
6-7 AM	710	0.0	1500	710	0	0.49	0	65.1	55.5	42.7
7-8 AM	1226	0.0	1500	1226	0	0.67	0	64.1	52.0	37.6
8-9 AM	1363	0.0	1499	1363	0	0.85	0	63.8	49.5	33.9
9-10 AM	1513	0.0	1499	1513	0	1.21	5	63.6	44.9	31.0
10-11 AM	1632	0.0	1500	1632	0	3.94	84	63.3	27.0	30.8
11AM-NOON	1644	0.0	1499	1644	0	9.21	225	63.3	15.3	30.8
NOON-1PM	1663	0.0	1500	1594	70	14.75+	372	63.3	10.9	30.8
1-2 PM	1622	0.0	1500	1501	122	16.12+	407	63.3	10.4	30.8
2-3 PM	1669	0.0	1500	1501	168	16.12+	407	63.3	10.4	30.8
3-4 PM	1641	0.0	1500	1501	140	16.12+	407	63.3	10.4	30.8
4-5 PM	1648	0.0	1500	1501	147	16.12+	407	63.3	10.4	30.8
5-6 PM	1483	0.0	1500	1483	0	15.76+	397	63.7	10.5	30.8
6-7 PM	1304	0.0	1499	1304	0	11.63	293	64.0	12.9	30.8
7-8 PM	1073	0.0	1500	1073	0	1.59	44	64.4	41.5	39.1
8-9 PM	913	0.0	1500	913	0	0.51	0	64.7	54.9	42.0
9-10 PM	865	0.0	1500	865	0	0.51	0	64.8	55.1	42.2
10-11 PM	645	0.0	1500	645	0	0.48	0	65.2	55.7	43.0
11PM-MID	442	0.0	1500	442	0	0.47	0	65.6	56.3	43.7

+ INDICATES QUEUEING EXCEEDS USER-SPECIFIED MAXIMUM LIMIT

*----- SITE BREAKDOWN DELAYS -----*	
BREAKDOWN DURATION (MINS)	0
RANGE OF QUEUE DELAY - MIN (VEH-H) MAX	0.0
AV BREAKDOWNS PER DAY	0.00
AV QUEUE DELAY/DAY (VEH-H)	0.0
AV TOTAL DELAY/DAY (VEH-H)	0.0

*----- SITE ACCIDENT DELAYS -----*	
BREAKDOWN DURATION (MINS)	0
RANGE OF QUEUE DELAY - MIN (VEH-H) MAX	0
AV BREAKDOWNS PER DAY	0
AV QUEUE DELAY/DAY (VEH-H)	0
AV TOTAL DELAY/DAY (VEH-H)	0

AVERAGE ACCIDENT NUMBERS (PIA/DAY)	
MAIN ROUTE WITHOUT WORKS	0.0120
MAIN ROUTE WITH WORKS	0.0101
'DIVERSION'	0.0007
<small>PIA: Personal Injury Accidents</small>	
IMPACTS ON ROAD USERS	
ROAD USER COSTS PER DAY	\$55,560
CONGESTED HOURS PER DAY*	6

\*Delays Exceeding User-Specified Maximum

**USH 41: STH 76 TO USH 45 (WINNEBAGO COUNTY)  
CONTINUOUS (24 HOUR) CLOSURE  
NO DIVERSION ROUTE (MAX QUEUE METHOD)**

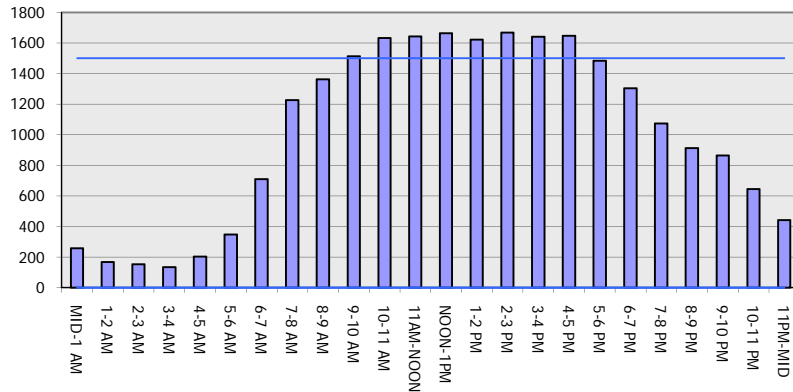
**OCTOBER**

Analyzed for 2009  
Construction Season

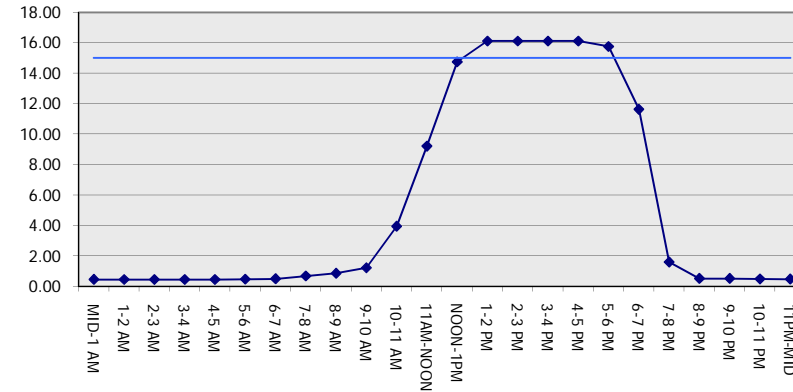
**GRAPHICAL REPRESENTATION OF TRAFFIC MODEL INPUT AND OUTPUT**

**SATURDAY SOUTHBOUND DIRECTION**

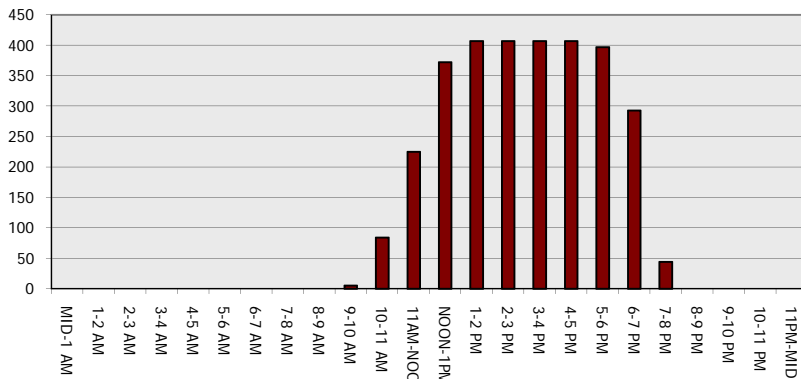
**Main Route - Traffic Demand (Vehicles Per Hour)**



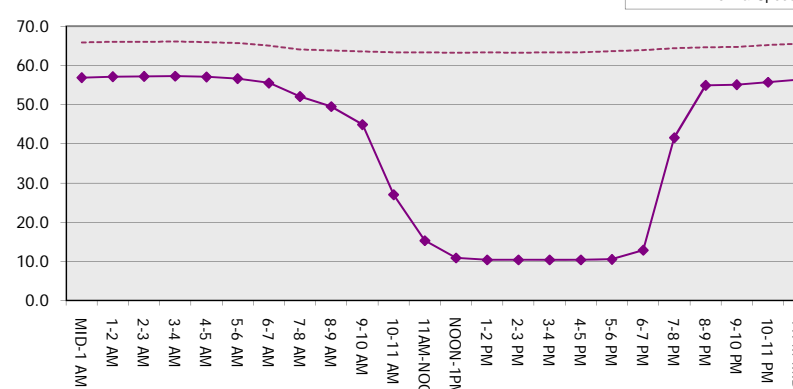
**Main Route Average Delay Per Vehicle (Minutes)**



**Main Route - Average Queue Length (Vehicles)**



**Main Route - Average Speed (MPH)**



<b>USH 41: STH 76 TO USH 45 (WINNEBAGO COUNTY)                  CONTINUOUS (24 HOUR) CLOSURE                  NO DIVERSION ROUTE (MAX QUEUE METHOD)</b>	<b>OCTOBER</b>
	Analyzed for 2009 Construction Season

**SUMMARY OF TRAFFIC MODEL OUTPUT**

SATURDAY NORTHBOUND DIRECTION

TIME OF DAY	FLOWS AND CAPACITY IN VEH/HR							AVERAGE SPEEDS IN MPH		
	MAIN ROUTE		SITE CAPA CITY	FLOW		AV.DEL PER VEH (MINS)	AVERAGE QUEUE (VEH)	MAIN ROUTE		SITE
	DEMAND FLOW	PCT HEAVY		MAIN ROUTE	'DIVER TED'			WITHOUT WORK ZONE	WITH WORK ZONE	
MID-1 AM	283	0.0	1500	283	0	0.45	0	65.9	56.8	44.3
1-2 AM	195	0.0	1500	195	0	0.44	0	66.0	57.1	44.7
2-3 AM	148	0.0	1500	148	0	0.44	0	66.1	57.2	44.9
3-4 AM	137	0.0	1500	137	0	0.44	0	66.1	57.3	45.0
4-5 AM	173	0.0	1500	173	0	0.44	0	66.1	57.1	44.8
5-6 AM	334	0.0	1500	334	0	0.45	0	65.8	56.6	44.2
6-7 AM	499	0.0	1500	499	0	0.47	0	65.5	56.1	43.5
7-8 AM	896	0.0	1500	896	0	0.51	0	64.7	55.0	42.0
8-9 AM	1249	0.0	1499	1249	0	0.70	0	64.1	51.7	37.1
9-10 AM	1590	0.0	1499	1590	0	1.72	23	63.4	39.9	30.9
10-11 AM	2023	0.0	1500	1779	243	11.19+	300	62.6	13.5	30.8
11AM-NOON	2201	0.0	1499	1502	699	16.08+	407	62.3	10.4	30.8
NOON-1PM	2245	0.0	1500	1502	743	16.08+	407	62.2	10.4	30.8
1-2 PM	2183	0.0	1500	1502	682	16.08+	407	62.3	10.4	30.8
2-3 PM	2135	0.0	1500	1501	633	16.09+	407	62.4	10.4	30.8
3-4 PM	2169	0.0	1500	1501	668	16.08+	407	62.3	10.4	30.8
4-5 PM	2194	0.0	1500	1501	692	16.08+	407	62.3	10.4	30.8
5-6 PM	2057	0.0	1500	1501	555	16.09+	407	62.5	10.4	30.8
6-7 PM	1734	0.0	1500	1511	223	16.06+	406	63.2	10.4	30.8
7-8 PM	1345	0.0	1500	1345	0	13.35+	336	63.9	11.6	30.8
8-9 PM	1116	0.0	1499	1116	0	2.48	84	64.3	34.7	37.5
9-10 PM	927	0.0	1500	927	0	0.51	0	64.6	54.9	41.9
10-11 PM	664	0.0	1500	664	0	0.49	0	65.1	55.6	42.9
11PM-MID	441	0.0	1500	441	0	0.47	0	65.6	56.3	43.7

+ INDICATES QUEUEING EXCEEDS USER-SPECIFIED MAXIMUM LIMIT

*----- SITE BREAKDOWN DELAYS -----*	
BREAKDOWN DURATION (MINS)	0
RANGE OF QUEUE DELAY - MIN (VEH-H) MAX	0.0
AV BREAKDOWNS PER DAY	0.00
AV QUEUE DELAY/DAY (VEH-H)	0.0
AV TOTAL DELAY/DAY (VEH-H)	0.0

*----- SITE ACCIDENT DELAYS -----*	
BREAKDOWN DURATION (MINS)	0
RANGE OF QUEUE DELAY - MIN (VEH-H) MAX	0
AV BREAKDOWNS PER DAY	0
AV QUEUE DELAY/DAY (VEH-H)	0
AV TOTAL DELAY/DAY (VEH-H)	0

AVERAGE ACCIDENT NUMBERS (PIA/DAY)	
MAIN ROUTE WITHOUT WORKS	0.0143
MAIN ROUTE WITH WORKS	0.0102
'DIVERSION'	0.0059

PIA: Personal Injury Accidents

ECONOMIC IMPACT ON ROAD USERS	
ROAD USER COSTS PER DAY	\$89,899
CONGESTED HOURS PER DAY*	10

\*Delays Exceeding User-Specified Maximum

**USH 41: STH 76 TO USH 45 (WINNEBAGO COUNTY)  
CONTINUOUS (24 HOUR) CLOSURE  
NO DIVERSION ROUTE (MAX QUEUE METHOD)**

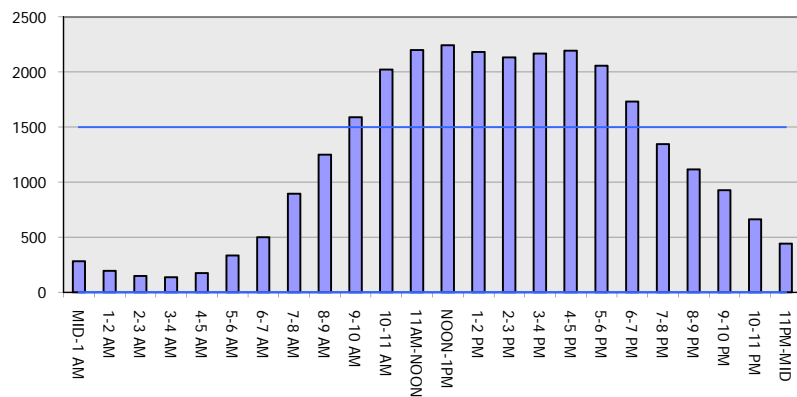
**OCTOBER**

Analyzed for 2009  
Construction Season

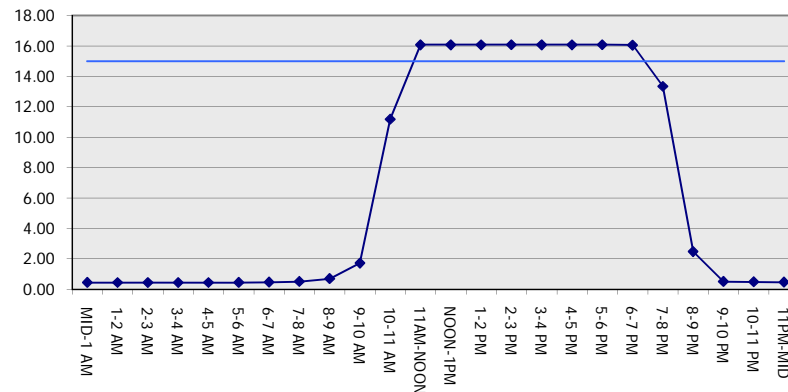
**GRAPHICAL REPRESENTATION OF TRAFFIC MODEL INPUT AND OUTPUT**

**SATURDAY NORTHBOUND DIRECTION**

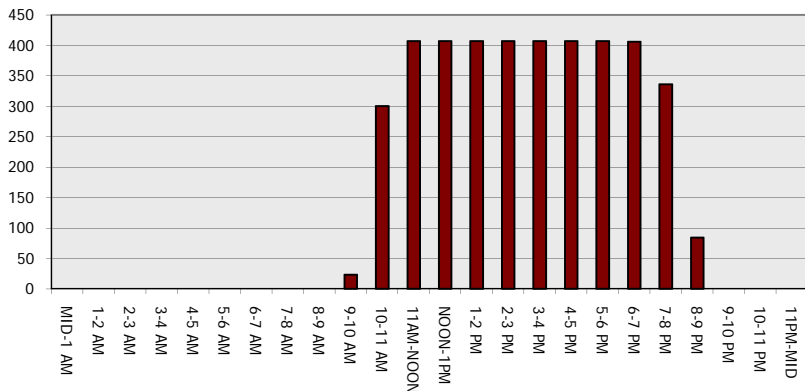
**Main Route - Traffic Demand (Vehicles Per Hour)**



**Main Route Average Delay Per Vehicle (Minutes)**



**Main Route - Average Queue Length (Vehicles)**



**Main Route - Average Speed (MPH)**

