

**USH 41: STH 76 TO USH 45 (WINNEBAGO COUNTY)  
CONTINUOUS (24 HOUR) CLOSURE  
NO DIVERSION ROUTE (MAX QUEUE METHOD)**

**AUGUST**

Analyzed for 2009  
Construction Season

**SUMMARY OF TRAFFIC MODEL OUTPUT**

SATURDAY SOUTHBOUND DIRECTION

TIME OF DAY	FLOWS AND CAPACITY IN VEH/HR						AVERAGE SPEEDS IN MPH			
	MAIN ROUTE		SITE CAPA CITY	FLOW		AV.DEL PER VEH (MINS)	AVERAGE QUEUE (VEH)	MAIN ROUTE		SITE
	DEMAND FLOW	PCT HEAVY		MAIN ROUTE	'DIVER TED'			WITHOUT WORK ZONE	WITH WORK ZONE	
MID-1 AM	296	0.0	2000	296	0	0.45	0	65.8	56.8	44.3
1-2 AM	184	0.0	2000	184	0	0.44	0	66.0	57.1	44.8
2-3 AM	155	0.0	2000	155	0	0.44	0	66.1	57.2	44.8
3-4 AM	118	0.0	2000	118	0	0.43	0	66.1	57.3	45.0
4-5 AM	190	0.0	2000	190	0	0.44	0	66.0	57.1	44.7
5-6 AM	313	0.0	2000	313	0	0.45	0	65.8	56.7	44.2
6-7 AM	582	0.0	2000	582	0	0.48	0	65.3	55.9	43.2
7-8 AM	963	0.0	2000	963	0	0.52	0	64.6	54.8	41.8
8-9 AM	1418	0.0	2000	1418	0	0.92	0	63.7	48.5	32.5
9-10 AM	1653	0.0	2000	1653	0	1.22	0	63.3	44.7	27.9
10-11 AM	1843	0.0	2000	1843	0	1.22	0	63.0	44.6	27.9
11AM-NOON	1916	0.0	2000	1916	0	1.21	0	62.8	44.5	27.9
NOON-1PM	1849	0.0	2000	1849	0	1.22	0	63.0	44.6	27.9
1-2 PM	1810	0.0	2000	1810	0	1.22	0	63.0	44.6	27.9
2-3 PM	1778	0.0	2000	1778	0	1.22	0	63.1	44.6	27.9
3-4 PM	1653	0.0	2000	1653	0	1.22	0	63.3	44.7	27.9
4-5 PM	1582	0.0	2000	1582	0	1.13	0	63.5	45.8	29.2
5-6 PM	1364	0.0	2000	1364	0	0.85	0	63.8	49.4	33.8
6-7 PM	1111	0.0	2000	1111	0	0.53	0	64.3	54.3	41.3
7-8 PM	950	0.0	2000	950	0	0.51	0	64.6	54.8	41.9
8-9 PM	884	0.0	2000	884	0	0.51	0	64.7	55.0	42.1
9-10 PM	924	0.0	2000	924	0	0.51	0	64.6	54.9	41.9
10-11 PM	1099	0.0	2000	1099	0	0.53	0	64.3	54.4	41.4
11PM-MID	1199	0.0	2000	1199	0	0.64	0	64.1	52.6	38.5

**\*----- SITE BREAKDOWN DELAYS -----\***

BREAKDOWN DURATION (MINS)	0
RANGE OF QUEUE DELAY - MIN (VEH-H) MAX	0.0
AV BREAKDOWNS PER DAY	0.00
AV QUEUE DELAY/DAY (VEH-H)	0.0
AV TOTAL DELAY/DAY (VEH-H)	0.0

**\*----- SITE ACCIDENT DELAYS -----\***

BREAKDOWN DURATION (MINS)	0
RANGE OF QUEUE DELAY - MIN (VEH-H) MAX	0
AV BREAKDOWNS PER DAY	0
AV QUEUE DELAY/DAY (VEH-H)	0
AV TOTAL DELAY/DAY (VEH-H)	0

**AVERAGE ACCIDENT NUMBERS (PIA/DAY)**

MAIN ROUTE WITHOUT WORKS	0.0127
MAIN ROUTE WITH WORKS	0.0110
'DIVERSION'	0.0000

PIA: Personal Injury Accidents

**IMPACTS ON ROAD USERS**

ROAD USER COSTS PER DAY	\$6,745
CONGESTED HOURS PER DAY*	0

\*Delays Exceeding User-Specified Maximum

**USH 41: STH 76 TO USH 45 (WINNEBAGO COUNTY)  
CONTINUOUS (24 HOUR) CLOSURE  
NO DIVERSION ROUTE (MAX QUEUE METHOD)**

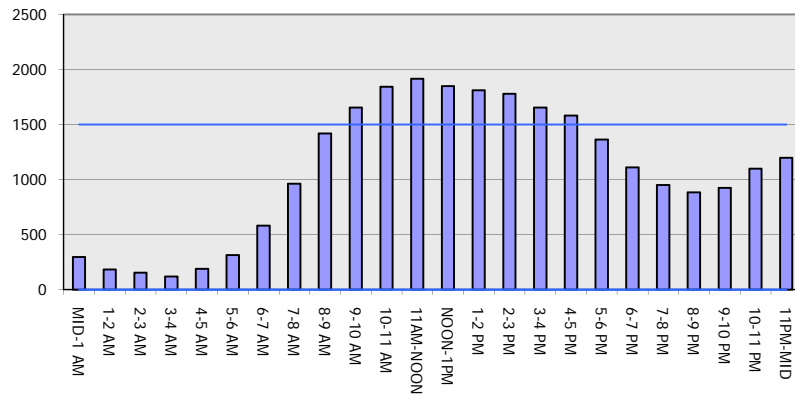
**AUGUST**

Analyzed for 2009  
Construction Season

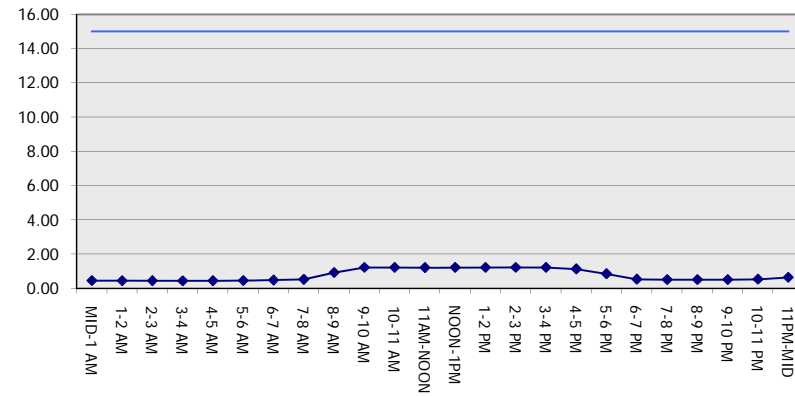
**GRAPHICAL REPRESENTATION OF TRAFFIC MODEL INPUT AND OUTPUT**

**SATURDAY SOUTHBOUND DIRECTION**

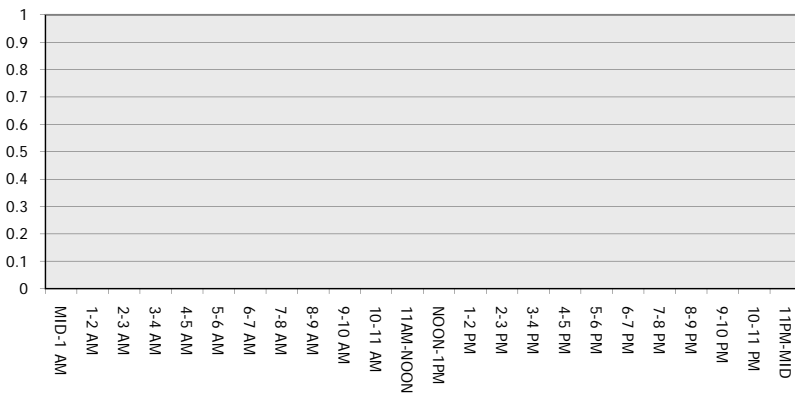
**Main Route - Traffic Demand (Vehicles Per Hour)**



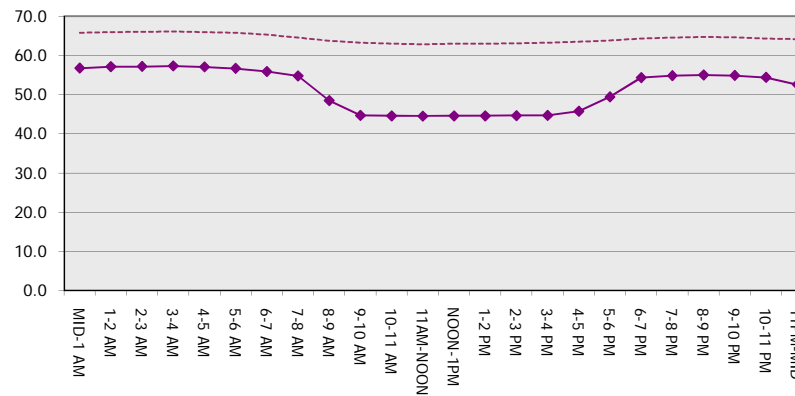
**Main Route Average Delay Per Vehicle (Minutes)**



**Main Route - Average Queue Length (Vehicles)**



**Main Route - Average Speed (MPH)**



<b>USH 41: STH 76 TO USH 45 (WINNEBAGO COUNTY)                  CONTINUOUS (24 HOUR) CLOSURE                  NO DIVERSION ROUTE (MAX QUEUE METHOD)</b>	<b>AUGUST</b>
	Analyzed for 2009 Construction Season

**SUMMARY OF TRAFFIC MODEL OUTPUT**

**SATURDAY NORTHBOUND DIRECTION**

TIME OF DAY	FLOWS AND CAPACITY IN VEH/HR							AVERAGE SPEEDS IN MPH		
	MAIN ROUTE		SITE CAPA CITY	FLOW		AV.DEL PER VEH (MINS)	AVERAGE QUEUE (VEH)	MAIN ROUTE		SITE
	DEMAND FLOW	PCT HEAVY		MAIN ROUTE	'DIVER TED'			WITHOUT WORK ZONE	WITH WORK ZONE	
MID-1 AM	355	0.0	2000	355	0	0.46	0	65.7	56.6	44.1
1-2 AM	249	0.0	2000	249	0	0.45	0	66.0	56.9	44.5
2-3 AM	160	0.0	2000	160	0	0.44	0	66.1	57.2	44.8
3-4 AM	153	0.0	2000	153	0	0.44	0	66.1	57.2	44.9
4-5 AM	174	0.0	2000	174	0	0.44	0	66.1	57.1	44.8
5-6 AM	337	0.0	2000	337	0	0.46	0	65.8	56.6	44.2
6-7 AM	498	0.0	2000	498	0	0.47	0	65.5	56.1	43.5
7-8 AM	826	0.0	2000	826	0	0.50	0	64.8	55.2	42.3
8-9 AM	1180	0.0	2000	1180	0	0.61	0	64.2	53.0	39.1
9-10 AM	1619	0.0	1999	1619	0	1.12	0	63.3	45.9	29.4
10-11 AM	2156	0.0	1999	2156	0	2.48	54	62.3	34.0	27.9
11AM-NOON	2357	0.0	2000	2357	0	9.41	322	62.0	15.4	27.9
NOON-1PM	2547	0.0	1999	2010	536	16.39+	566	60.4	11.4	27.9
1-2 PM	2612	0.0	2000	2009	603	16.35+	566	59.7	11.4	27.9
2-3 PM	2590	0.0	2000	2007	583	16.36+	566	60.0	11.4	27.9
3-4 PM	2576	0.0	2000	2005	570	16.37+	566	60.1	11.4	27.9
4-5 PM	2414	0.0	2000	2004	410	16.46+	566	61.8	11.4	27.9
5-6 PM	2160	0.0	2000	2015	145	16.42+	563	62.3	11.4	27.9
6-7 PM	1610	0.0	1999	1610	0	11.51+	398	63.4	13.8	27.9
7-8 PM	1186	0.0	2000	1186	0	0.96	20	64.1	48.2	38.2
8-9 PM	1046	0.0	2000	1046	0	0.52	0	64.5	54.5	41.5
9-10 PM	891	0.0	2000	891	0	0.51	0	64.7	55.0	42.0
10-11 PM	737	0.0	2000	737	0	0.49	0	65.0	55.5	42.6
11PM-MID	514	0.0	2000	514	0	0.47	0	65.5	56.1	43.5

+ INDICATES QUEUEING EXCEEDS USER-SPECIFIED MAXIMUM LIMIT

*----- SITE BREAKDOWN DELAYS -----*	
BREAKDOWN DURATION (MINS)	0
RANGE OF QUEUE DELAY - MIN (VEH-H) MAX	0.0
AV BREAKDOWNS PER DAY	0.00
AV QUEUE DELAY/DAY (VEH-H)	0.0
AV TOTAL DELAY/DAY (VEH-H)	0.0

*----- SITE ACCIDENT DELAYS -----*	
BREAKDOWN DURATION (MINS)	0
RANGE OF QUEUE DELAY - MIN (VEH-H) MAX	0
AV BREAKDOWNS PER DAY	0
AV QUEUE DELAY/DAY (VEH-H)	0
AV TOTAL DELAY/DAY (VEH-H)	0

AVERAGE ACCIDENT NUMBERS (PIA/DAY)	
MAIN ROUTE WITHOUT WORKS	0.0153
MAIN ROUTE WITH WORKS	0.0120
'DIVERSION'	0.0033

PIA: Personal Injury Accidents

ECONOMIC IMPACT ON ROAD USERS	
ROAD USER COSTS PER DAY	\$82,834
CONGESTED HOURS PER DAY*	7

\*Delays Exceeding User-Specified Maximum

**USH 41: STH 76 TO USH 45 (WINNEBAGO COUNTY)  
CONTINUOUS (24 HOUR) CLOSURE  
NO DIVERSION ROUTE (MAX QUEUE METHOD)**

**AUGUST**  
Analyzed for 2009  
Construction Season

**GRAPHICAL REPRESENTATION OF TRAFFIC MODEL INPUT AND OUTPUT**  
**SATURDAY NORTHBOUND DIRECTION**

