

USH 41: STH 76 TO USH 45 (WINNEBAGO COUNTY) CONTINUOUS (24 HOUR) CLOSURE NO DIVERSION ROUTE (MAX QUEUE METHOD)	MAY
	Analyzed for 2009 Construction Season

SUMMARY OF TRAFFIC MODEL OUTPUT

MON-THUR SOUTHBOUND DIRECTION

TIME OF DAY	FLOWS AND CAPACITY IN VEH/HR						AVERAGE SPEEDS IN MPH			
	MAIN ROUTE		SITE CAPA CITY	FLOW		AV.DEL PER VEH (MINS)	AVERAGE QUEUE (VEH)	MAIN ROUTE		SITE
	DEMAND FLOW	PCT HEAVY		MAIN ROUTE	'DIVER TED'			WITHOUT WORK ZONE	WITH WORK ZONE	
MID-1 AM	172	0.0	1500	172	0	0.44	0	66.1	57.1	44.8
1-2 AM	129	0.0	1500	129	0	0.43	0	66.1	57.3	45.0
2-3 AM	132	0.0	1500	132	0	0.44	0	66.1	57.3	45.0
3-4 AM	161	0.0	1500	161	0	0.44	0	66.1	57.2	44.8
4-5 AM	311	0.0	1500	311	0	0.45	0	65.8	56.7	44.2
5-6 AM	773	0.0	1500	773	0	0.50	0	65.0	55.3	42.5
6-7 AM	1584	0.0	1499	1584	0	1.85	32	63.4	38.9	31.8
7-8 AM	2195	0.0	1500	1833	361	13.55+	353	62.3	11.6	30.8
8-9 AM	1786	0.0	1499	1459	327	15.97+	403	63.0	10.4	30.8
9-10 AM	1466	0.0	1499	1432	34	15.39+	387	63.7	10.6	30.8
10-11 AM	1437	0.0	1500	1437	0	12.99	323	63.7	11.7	30.8
11AM-NOON	1469	0.0	1500	1469	0	11.18	273	63.7	13.2	30.8
NOON-1PM	1518	0.0	1500	1518	0	10.83	264	63.5	13.5	30.8
1-2 PM	1643	0.0	1500	1643	0	13.56+	341	63.3	11.5	30.8
2-3 PM	1820	0.0	1499	1499	321	16.11+	407	63.0	10.4	30.8
3-4 PM	2063	0.0	1499	1499	564	16.09+	407	62.5	10.4	30.8
4-5 PM	2330	0.0	1499	1499	830	16.07+	408	62.0	10.4	30.8
5-6 PM	2076	0.0	1499	1499	577	16.09+	407	62.5	10.4	30.8
6-7 PM	1282	0.0	1499	1278	3	13.40+	343	64.0	11.7	31.2
7-8 PM	935	0.0	1500	935	0	1.32	38	64.6	44.3	41.4
8-9 PM	844	0.0	1500	844	0	0.50	0	64.8	55.1	42.2
9-10 PM	666	0.0	1500	666	0	0.49	0	65.1	55.6	42.9
10-11 PM	508	0.0	1500	508	0	0.47	0	65.5	56.1	43.5
11PM-MID	291	0.0	1500	291	0	0.45	0	65.8	56.8	44.3

+ INDICATES QUEUEING EXCEEDS USER-SPECIFIED MAXIMUM LIMIT

----- SITE BREAKDOWN DELAYS -----	
BREAKDOWN DURATION (MINS)	0
RANGE OF QUEUE DELAY - MIN (VEH-H) MAX	0.0
AV BREAKDOWNS PER DAY	0.00
AV QUEUE DELAY/DAY (VEH-H)	0.0
AV TOTAL DELAY/DAY (VEH-H)	0.0

----- SITE ACCIDENT DELAYS -----	
BREAKDOWN DURATION (MINS)	0
RANGE OF QUEUE DELAY - MIN (VEH-H) MAX	0
AV BREAKDOWNS PER DAY	0
AV QUEUE DELAY/DAY (VEH-H)	0
AV TOTAL DELAY/DAY (VEH-H)	0

AVERAGE ACCIDENT NUMBERS (PIA/DAY)	
MAIN ROUTE WITHOUT WORKS	0.0136
MAIN ROUTE WITH WORKS	0.0105
'DIVERSION'	0.0034
PIA: Personal Injury Accidents	
IMPACTS ON ROAD USERS	
ROAD USER COSTS PER DAY	\$68,450
CONGESTED HOURS PER DAY*	9

*Delays Exceeding User-Specified Maximum

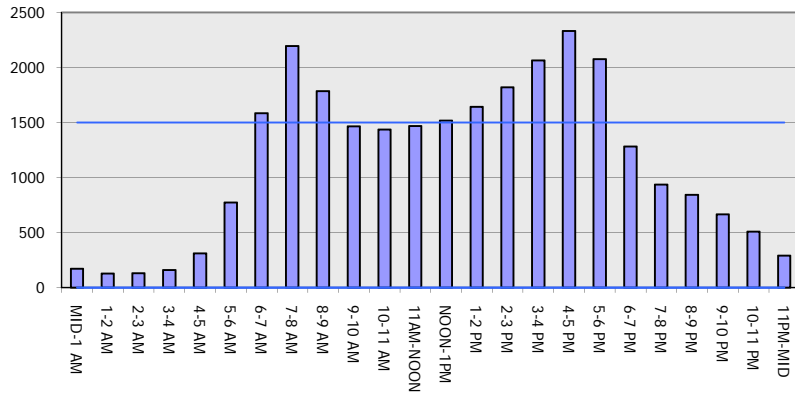
**USH 41: STH 76 TO USH 45 (WINNEBAGO COUNTY)
CONTINUOUS (24 HOUR) CLOSURE
NO DIVERSION ROUTE (MAX QUEUE METHOD)**

MAY
Analyzed for 2009
Construction Season

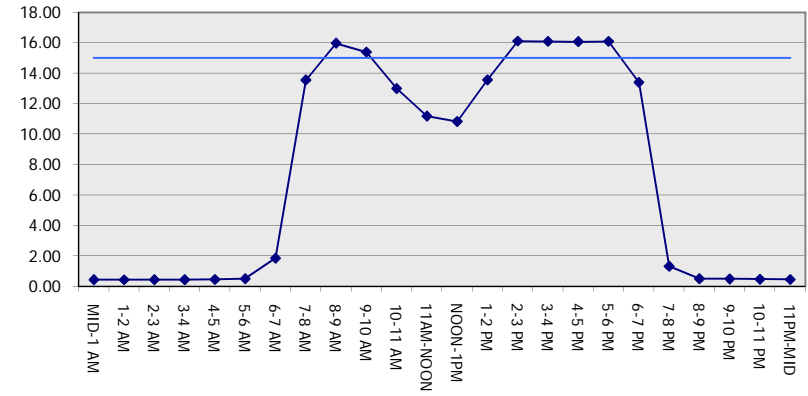
GRAPHICAL REPRESENTATION OF TRAFFIC MODEL INPUT AND OUTPUT

MON-THUR SOUTHBOUND DIRECTION

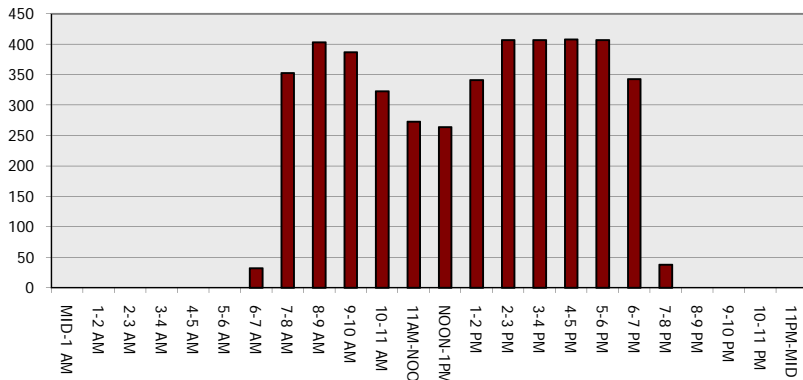
Main Route - Traffic Demand (Vehicles Per Hour)



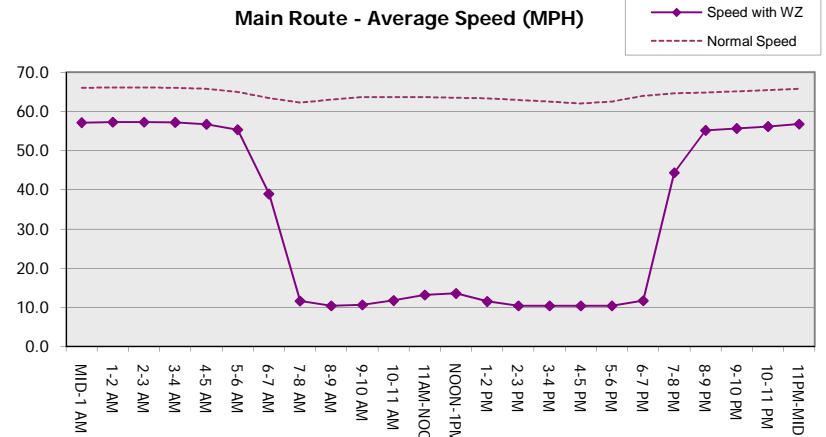
Main Route Average Delay Per Vehicle (Minutes)



Main Route - Average Queue Length (Vehicles)



Main Route - Average Speed (MPH)



USH 41: STH 76 TO USH 45 (WINNEBAGO COUNTY) CONTINUOUS (24 HOUR) CLOSURE NO DIVERSION ROUTE (MAX QUEUE METHOD)	MAY
	Analyzed for 2009 Construction Season

SUMMARY OF TRAFFIC MODEL OUTPUT

MON-THUR NORTHBOUND DIRECTION

TIME OF DAY	FLOWS AND CAPACITY IN VEH/HR							AVERAGE SPEEDS IN MPH			
	MAIN ROUTE		SITE CAPA CITY	FLOW		AV.DEL PER VEH (MINS)	AVERAGE QUEUE (VEH)	MAIN ROUTE		SITE	
	DEMAND FLOW	PCT HEAVY		MAIN ROUTE	'DIVER TED'			WITHOUT WORK ZONE	WITH WORK ZONE		
MID-1 AM	188	0.0	1500	188	0	0.44	0	66.0	57.1	44.7	
1-2 AM	132	0.0	1500	132	0	0.44	0	66.1	57.3	45.0	
2-3 AM	112	0.0	1500	112	0	0.43	0	66.2	57.3	45.0	
3-4 AM	153	0.0	1500	153	0	0.44	0	66.1	57.2	44.9	
4-5 AM	261	0.0	1500	261	0	0.45	0	65.9	56.9	44.5	
5-6 AM	790	0.0	1500	790	0	0.50	0	64.9	55.3	42.4	
6-7 AM	1569	0.0	1499	1569	0	1.83	33	63.5	39.1	32.3	
7-8 AM	2413	0.0	1500	1707	706	14.14+	373	61.8	11.4	33.7	
8-9 AM	1686	0.0	1499	1562	124	15.85+	400	63.2	10.4	30.8	
9-10 AM	1542	0.0	1500	1500	42	16.12+	407	63.5	10.4	30.8	
10-11 AM	1577	0.0	1500	1500	77	16.12+	407	63.5	10.4	30.8	
11AM-NOON	1654	0.0	1500	1500	154	16.12+	407	63.3	10.4	30.8	
NOON-1PM	1705	0.0	1500	1500	205	16.11+	407	63.2	10.4	30.8	
1-2 PM	1734	0.0	1500	1500	233	16.11+	407	63.2	10.4	30.8	
2-3 PM	1952	0.0	1500	1500	452	16.10+	407	62.7	10.4	30.8	
3-4 PM	2336	0.0	1500	1500	836	16.07+	408	62.0	10.4	30.8	
4-5 PM	2600	0.0	1500	1500	1100	15.96+	408	59.9	10.4	30.8	
5-6 PM	2433	0.0	1500	1500	932	16.05+	408	61.6	10.4	30.8	
6-7 PM	1603	0.0	1500	1468	135	15.79+	398	63.4	10.4	30.8	
7-8 PM	1091	0.0	1499	1091	0	5.70	191	64.3	21.7	35.4	
8-9 PM	938	0.0	1500	938	0	0.51	0	64.6	54.8	41.9	
9-10 PM	756	0.0	1500	756	0	0.50	0	65.0	55.4	42.5	
10-11 PM	489	0.0	1500	489	0	0.47	0	65.5	56.2	43.5	
11PM-MID	357	0.0	1500	357	0	0.46	0	65.7	56.6	44.0	

+ INDICATES QUEUEING EXCEEDS USER-SPECIFIED MAXIMUM LIMIT

----- SITE BREAKDOWN DELAYS -----	
BREAKDOWN DURATION (MINS)	0
RANGE OF QUEUE DELAY - MIN (VEH-H) MAX	0.0
AV BREAKDOWNS PER DAY	0.00
AV QUEUE DELAY/DAY (VEH-H)	0.0
AV TOTAL DELAY/DAY (VEH-H)	0.0

----- SITE ACCIDENT DELAYS -----	
BREAKDOWN DURATION (MINS)	0
RANGE OF QUEUE DELAY - MIN (VEH-H) MAX	0
AV BREAKDOWNS PER DAY	0
AV QUEUE DELAY/DAY (VEH-H)	0
AV TOTAL DELAY/DAY (VEH-H)	0

AVERAGE ACCIDENT NUMBERS (PIA/DAY)	
MAIN ROUTE WITHOUT WORKS	0.0148
MAIN ROUTE WITH WORKS	0.0107
'DIVERSION'	0.0057

PIA: Personal Injury Accidents

ECONOMIC IMPACT ON ROAD USERS	
ROAD USER COSTS PER DAY	\$83,378
CONGESTED HOURS PER DAY*	12

*Delays Exceeding User-Specified Maximum

**USH 41: STH 76 TO USH 45 (WINNEBAGO COUNTY)
CONTINUOUS (24 HOUR) CLOSURE
NO DIVERSION ROUTE (MAX QUEUE METHOD)**

MAY
Analyzed for 2009
Construction Season

GRAPHICAL REPRESENTATION OF TRAFFIC MODEL INPUT AND OUTPUT
MON-THUR NORTHBOUND DIRECTION

