

USH 41: 9TH AVE TO STH 44 (WINNEBAGO COUNTY) CONTINUOUS (24 HOUR) CLOSURE NO DIVERSION ROUTE (MAX QUEUE METHOD)	OCTOBER
	Analyzed for 2009 Construction Season

SUMMARY OF TRAFFIC MODEL OUTPUT

SATURDAY SOUTHBOUND DIRECTION

TIME OF DAY	FLOWS AND CAPACITY IN VEH/HR						AVERAGE SPEEDS IN MPH			
	MAIN ROUTE		SITE CAPA CITY	FLOW		AV.DEL PER VEH (MINS)	AVERAGE QUEUE (VEH)	MAIN ROUTE		SITE
	DEMAND FLOW	PCT HEAVY		MAIN ROUTE	'DIVER TED'			WITHOUT WORK ZONE	WITH WORK ZONE	
MID-1 AM	233	0.0	1500	233	0	0.45	0	66.0	48.9	44.5
1-2 AM	161	0.0	1500	161	0	0.44	0	66.1	49.1	44.8
2-3 AM	144	0.0	1500	144	0	0.44	0	66.1	49.2	44.9
3-4 AM	134	0.0	1500	134	0	0.44	0	66.1	49.2	45.0
4-5 AM	216	0.0	1500	216	0	0.44	0	66.0	48.9	44.6
5-6 AM	378	0.0	1500	378	0	0.46	0	65.7	48.3	44.0
6-7 AM	702	0.0	1500	702	0	0.49	0	65.1	47.1	42.7
7-8 AM	1216	0.0	1499	1216	0	0.65	0	64.1	42.8	38.2
8-9 AM	1448	0.0	1499	1448	0	0.96	0	63.7	36.8	31.9
9-10 AM	1644	0.0	1500	1644	0	2.91	61	63.3	20.4	30.8
10-11 AM	1825	0.0	1500	1825	0	11.75+	302	63.0	9.3	30.8
11AM-NOON	1809	0.0	1499	1493	316	17.31+	439	63.0	7.8	30.8
NOON-1PM	1836	0.0	1499	1495	342	17.31+	440	63.0	7.8	30.8
1-2 PM	1725	0.0	1499	1496	229	17.30+	439	63.2	7.8	30.8
2-3 PM	1733	0.0	1499	1497	237	17.30+	439	63.2	7.8	30.8
3-4 PM	1721	0.0	1499	1498	224	17.30+	439	63.2	7.8	30.8
4-5 PM	1725	0.0	1499	1498	227	17.30+	439	63.2	7.8	30.8
5-6 PM	1590	0.0	1499	1497	94	17.29+	438	63.4	7.8	30.8
6-7 PM	1377	0.0	1499	1377	0	15.64+	395	63.8	8.1	30.8
7-8 PM	1133	0.0	1499	1133	0	4.34	152	64.3	17.3	35.2
8-9 PM	938	0.0	1500	938	0	0.51	0	64.6	46.3	41.9
9-10 PM	809	0.0	1500	809	0	0.50	0	64.9	46.8	42.4
10-11 PM	644	0.0	1500	644	0	0.48	0	65.2	47.3	43.0
11PM-MID	420	0.0	1500	420	0	0.46	0	65.6	48.1	43.8

+ INDICATES QUEUEING EXCEEDS USER-SPECIFIED MAXIMUM LIMIT

----- SITE BREAKDOWN DELAYS -----	
BREAKDOWN DURATION (MINS)	0
RANGE OF QUEUE DELAY - MIN (VEH-H) MAX	0.0
AV BREAKDOWNS PER DAY	0.00
AV QUEUE DELAY/DAY (VEH-H)	0.0
AV TOTAL DELAY/DAY (VEH-H)	0.0

----- SITE ACCIDENT DELAYS -----	
BREAKDOWN DURATION (MINS)	0
RANGE OF QUEUE DELAY - MIN (VEH-H) MAX	0
AV BREAKDOWNS PER DAY	0
AV QUEUE DELAY/DAY (VEH-H)	0
AV TOTAL DELAY/DAY (VEH-H)	0

AVERAGE ACCIDENT NUMBERS (PIA/DAY)	
MAIN ROUTE WITHOUT WORKS	0.0057
MAIN ROUTE WITH WORKS	0.0037
'DIVERSION'	0.0009
<small>PIA: Personal Injury Accidents</small>	
IMPACTS ON ROAD USERS	
ROAD USER COSTS PER DAY	\$75,173
CONGESTED HOURS PER DAY*	9

*Delays Exceeding User-Specified Maximum

**USH 41: 9TH AVE TO STH 44 (WINNEBAGO COUNTY)
CONTINUOUS (24 HOUR) CLOSURE
NO DIVERSION ROUTE (MAX QUEUE METHOD)**

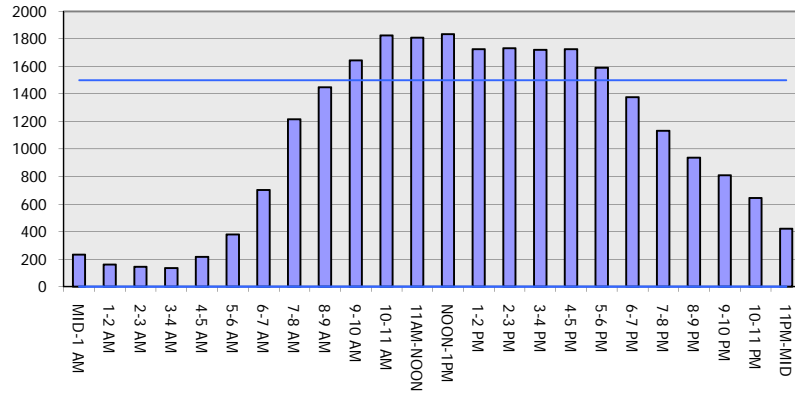
OCTOBER

Analyzed for 2009
Construction Season

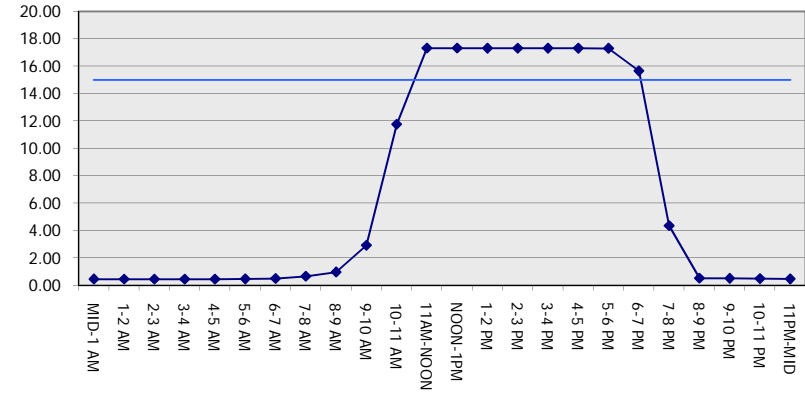
GRAPHICAL REPRESENTATION OF TRAFFIC MODEL INPUT AND OUTPUT

SATURDAY SOUTHBOUND DIRECTION

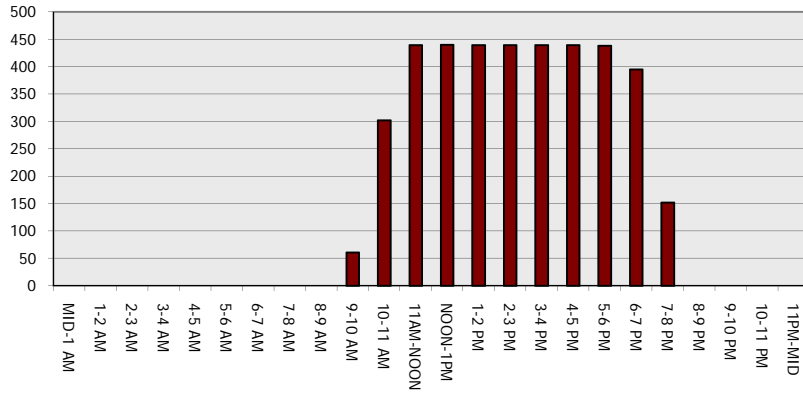
Main Route - Traffic Demand (Vehicles Per Hour)



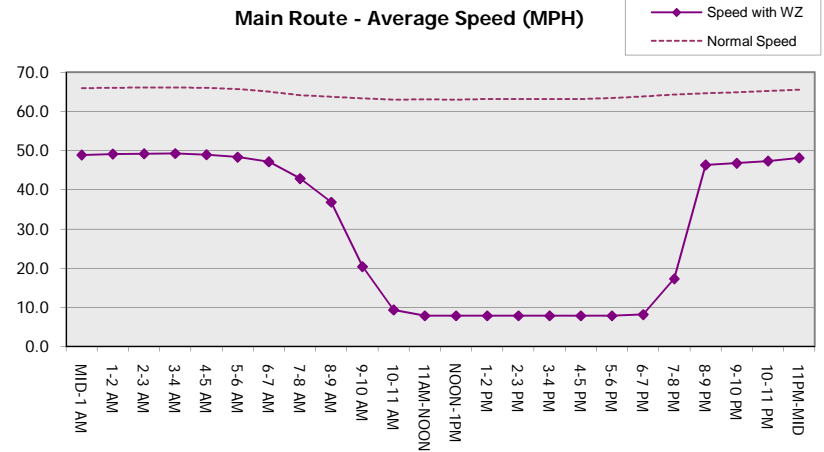
Main Route Average Delay Per Vehicle (Minutes)



Main Route - Average Queue Length (Vehicles)



Main Route - Average Speed (MPH)



USH 41: 9TH AVE TO STH 44 (WINNEBAGO COUNTY) CONTINUOUS (24 HOUR) CLOSURE NO DIVERSION ROUTE (MAX QUEUE METHOD)	OCTOBER
	Analyzed for 2009 Construction Season

SUMMARY OF TRAFFIC MODEL OUTPUT

SATURDAY NORTHBOUND DIRECTION

TIME OF DAY	FLOWS AND CAPACITY IN VEH/HR						AVERAGE SPEEDS IN MPH			
	MAIN ROUTE		SITE CAPA CITY	FLOW		AV.DEL PER VEH (MINS)	AVERAGE QUEUE (VEH)	MAIN ROUTE		SITE
	DEMAND FLOW	PCT HEAVY		MAIN ROUTE	'DIVER TED'			WITHOUT WORK ZONE	WITH WORK ZONE	
MID-1 AM	270	0.0	1500	270	0	0.45	0	65.9	48.7	44.4
1-2 AM	170	0.0	1500	170	0	0.44	0	66.1	49.1	44.8
2-3 AM	144	0.0	1500	144	0	0.44	0	66.1	49.2	44.9
3-4 AM	135	0.0	1500	135	0	0.44	0	66.1	49.2	45.0
4-5 AM	178	0.0	1500	178	0	0.44	0	66.1	49.1	44.8
5-6 AM	367	0.0	1500	367	0	0.46	0	65.7	48.3	44.0
6-7 AM	512	0.0	1500	512	0	0.47	0	65.5	47.8	43.5
7-8 AM	839	0.0	1500	839	0	0.50	0	64.8	46.6	42.2
8-9 AM	1121	0.0	1499	1121	0	0.58	0	64.3	44.5	39.9
9-10 AM	1497	0.0	1499	1497	0	1.28	10	63.6	32.2	31.8
10-11 AM	1838	0.0	1500	1838	0	7.58	198	63.0	11.7	30.8
11AM-NOON	1950	0.0	1499	1514	435	17.31+	440	62.8	7.8	30.8
NOON-1PM	1894	0.0	1500	1510	384	17.31+	440	62.8	7.8	30.8
1-2 PM	1853	0.0	1500	1508	345	17.31+	440	62.9	7.8	30.8
2-3 PM	1770	0.0	1500	1506	264	17.30+	439	63.1	7.8	30.8
3-4 PM	1784	0.0	1500	1505	279	17.31+	439	63.0	7.8	30.8
4-5 PM	1789	0.0	1500	1504	286	17.31+	439	63.0	7.8	30.8
5-6 PM	1717	0.0	1500	1503	214	17.30+	439	63.2	7.8	30.8
6-7 PM	1442	0.0	1500	1442	0	16.54+	418	63.7	7.9	30.8
7-8 PM	1164	0.0	1499	1164	0	8.13	219	64.2	11.4	33.2
8-9 PM	962	0.0	1500	962	0	0.55	1	64.6	45.3	41.8
9-10 PM	790	0.0	1500	790	0	0.50	0	64.9	46.8	42.4
10-11 PM	552	0.0	1500	552	0	0.48	0	65.3	47.7	43.3
11PM-MID	381	0.0	1500	381	0	0.46	0	65.7	48.3	44.0

+ INDICATES QUEUEING EXCEEDS USER-SPECIFIED MAXIMUM LIMIT

----- SITE BREAKDOWN DELAYS -----	
BREAKDOWN DURATION (MINS)	0
RANGE OF QUEUE DELAY - MIN (VEH-H) MAX	0.0
AV BREAKDOWNS PER DAY	0.00
AV QUEUE DELAY/DAY (VEH-H)	0.0
AV TOTAL DELAY/DAY (VEH-H)	0.0

----- SITE ACCIDENT DELAYS -----	
BREAKDOWN DURATION (MINS)	0
RANGE OF QUEUE DELAY - MIN (VEH-H) MAX	0
AV BREAKDOWNS PER DAY	0
AV QUEUE DELAY/DAY (VEH-H)	0
AV TOTAL DELAY/DAY (VEH-H)	0

AVERAGE ACCIDENT NUMBERS (PIA/DAY)	
MAIN ROUTE WITHOUT WORKS	0.0056
MAIN ROUTE WITH WORKS	0.0036
'DIVERSION'	0.0011

PIA: Personal Injury Accidents

ECONOMIC IMPACT ON ROAD USERS	
ROAD USER COSTS PER DAY	\$76,864
CONGESTED HOURS PER DAY*	8

*Delays Exceeding User-Specified Maximum

**USH 41: 9TH AVE TO STH 44 (WINNEBAGO COUNTY)
CONTINUOUS (24 HOUR) CLOSURE
NO DIVERSION ROUTE (MAX QUEUE METHOD)**

OCTOBER

Analyzed for 2009
Construction Season

GRAPHICAL REPRESENTATION OF TRAFFIC MODEL INPUT AND OUTPUT
SATURDAY NORTHBOUND DIRECTION

