

<b>USH 41: 9TH AVE TO STH 44 (WINNEBAGO COUNTY)                  CONTINUOUS (24 HOUR) CLOSURE                  NO DIVERSION ROUTE (MAX QUEUE METHOD)</b>	<b>OCTOBER</b>
	Analyzed for 2009 Construction Season

**SUMMARY OF TRAFFIC MODEL OUTPUT**

FRIDAY      SOUTHBOUND DIRECTION

TIME OF DAY	FLOWS AND CAPACITY IN VEH/HR						AVERAGE SPEEDS IN MPH			
	MAIN ROUTE		SITE CAPA CITY	FLOW		AV.DEL PER VEH (MINS)	AVERAGE QUEUE (VEH)	MAIN ROUTE		SITE
	DEMAND FLOW	PCT HEAVY		MAIN ROUTE	'DIVER TED'			WITHOUT WORK ZONE	WITH WORK ZONE	
MID-1 AM	172	0.0	1500	172	0	0.44	0	66.1	49.1	44.8
1-2 AM	147	0.0	1500	147	0	0.44	0	66.1	49.2	44.9
2-3 AM	162	0.0	1500	162	0	0.44	0	66.1	49.1	44.8
3-4 AM	206	0.0	1500	206	0	0.44	0	66.0	48.9	44.6
4-5 AM	376	0.0	1500	376	0	0.46	0	65.7	48.3	44.0
5-6 AM	876	0.0	1500	876	0	0.51	0	64.8	46.5	42.1
6-7 AM	1550	0.0	1499	1550	0	1.59	27	63.5	28.8	32.0
7-8 AM	2204	0.0	1500	1835	368	13.74+	358	62.3	8.7	30.8
8-9 AM	1810	0.0	1500	1499	310	17.31+	439	63.0	7.8	30.8
9-10 AM	1636	0.0	1500	1499	136	17.30+	439	63.3	7.8	30.8
10-11 AM	1754	0.0	1499	1499	255	17.30+	439	63.1	7.8	30.8
11AM-NOON	1885	0.0	1499	1500	385	17.31+	440	62.8	7.8	30.8
NOON-1PM	2041	0.0	1499	1500	541	17.33+	440	62.6	7.8	30.8
1-2 PM	2170	0.0	1500	1500	670	17.34+	441	62.3	7.8	30.8
2-3 PM	2373	0.0	1499	1500	872	17.35+	442	62.0	7.8	30.8
3-4 PM	2658	0.0	1499	1505	1153	17.34+	444	59.2	7.8	30.8
4-5 PM	2795	0.0	1500	1504	1291	17.49+	450	57.9	7.8	30.8
5-6 PM	2487	0.0	1500	1496	991	17.35+	443	61.0	7.8	30.8
6-7 PM	1754	0.0	1500	1498	256	17.30+	439	63.1	7.8	30.8
7-8 PM	1160	0.0	1499	1160	0	11.40+	300	64.2	9.6	32.8
8-9 PM	933	0.0	1500	933	0	0.71	10	64.6	41.8	41.9
9-10 PM	794	0.0	1500	794	0	0.50	0	64.9	46.8	42.4
10-11 PM	646	0.0	1500	646	0	0.49	0	65.2	47.3	43.0
11PM-MID	400	0.0	1500	400	0	0.46	0	65.6	48.3	43.9

+ INDICATES QUEUEING EXCEEDS USER-SPECIFIED MAXIMUM LIMIT

*----- SITE BREAKDOWN DELAYS -----*	
BREAKDOWN DURATION (MINS)	0
RANGE OF QUEUE DELAY - MIN (VEH-H) MAX	0.0
AV BREAKDOWNS PER DAY	0.00
AV QUEUE DELAY/DAY (VEH-H)	0.0
AV TOTAL DELAY/DAY (VEH-H)	0.0

*----- SITE ACCIDENT DELAYS -----*	
BREAKDOWN DURATION (MINS)	0
RANGE OF QUEUE DELAY - MIN (VEH-H) MAX	0
AV BREAKDOWNS PER DAY	0
AV QUEUE DELAY/DAY (VEH-H)	0
AV TOTAL DELAY/DAY (VEH-H)	0

AVERAGE ACCIDENT NUMBERS (PIA/DAY)	
MAIN ROUTE WITHOUT WORKS	0.0073
MAIN ROUTE WITH WORKS	0.0040
'DIVERSION'	0.0037
PIA: Personal Injury Accidents	
IMPACTS ON ROAD USERS	
ROAD USER COSTS PER DAY	\$102,815
CONGESTED HOURS PER DAY*	13

\*Delays Exceeding User-Specified Maximum

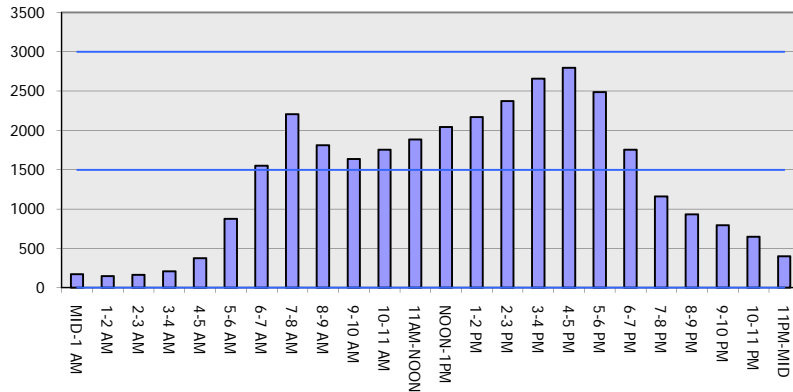
**USH 41: 9TH AVE TO STH 44 (WINNEBAGO COUNTY)  
CONTINUOUS (24 HOUR) CLOSURE  
NO DIVERSION ROUTE (MAX QUEUE METHOD)**

**OCTOBER**

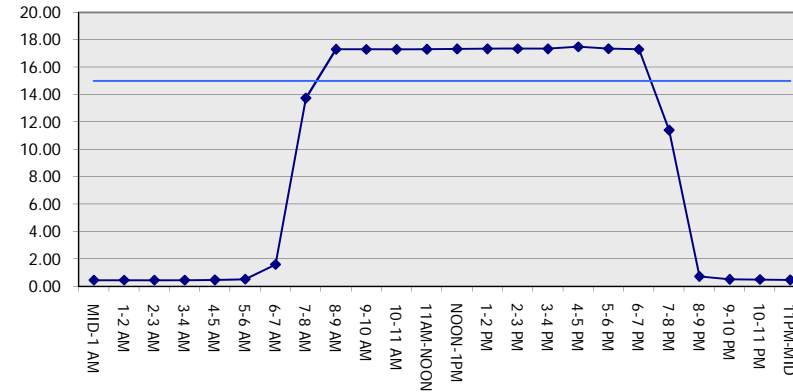
Analyzed for 2009  
Construction Season

**GRAPHICAL REPRESENTATION OF TRAFFIC MODEL INPUT AND OUTPUT**  
**FRIDAY SOUTHBOUND DIRECTION**

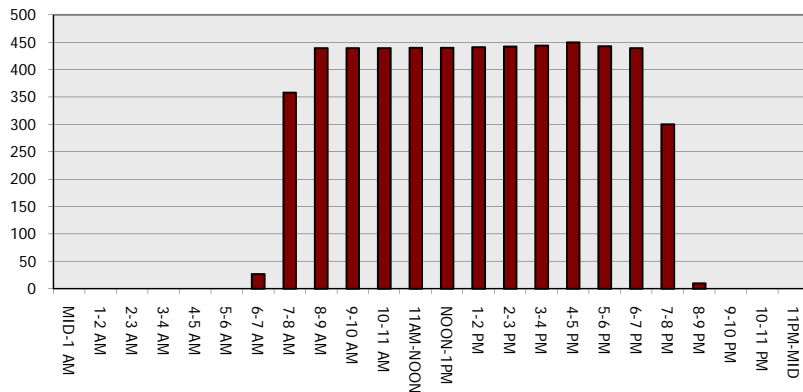
**Main Route - Traffic Demand (Vehicles Per Hour)**



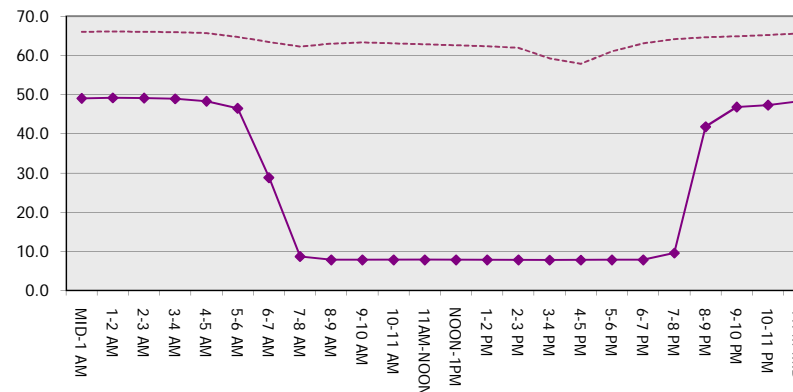
**Main Route Average Delay Per Vehicle (Minutes)**



**Main Route - Average Queue Length (Vehicles)**



**Main Route - Average Speed (MPH)**



<b>USH 41: 9TH AVE TO STH 44 (WINNEBAGO COUNTY)</b> <b>CONTINUOUS (24 HOUR) CLOSURE</b> <b>NO DIVERSION ROUTE (MAX QUEUE METHOD)</b>	<b>OCTOBER</b>
	Analyzed for 2009 Construction Season

**SUMMARY OF TRAFFIC MODEL OUTPUT**

FRIDAY NORTHBOUND DIRECTION

TIME OF DAY	FLOWS AND CAPACITY IN VEH/HR							AVERAGE SPEEDS IN MPH			
	MAIN ROUTE		SITE CAPA CITY	FLOW		AV.DEL PER VEH (MINS)	AVERAGE QUEUE (VEH)	MAIN ROUTE		SITE	
	DEMAND FLOW	PCT HEAVY		MAIN ROUTE	'DIVER TED'			WITHOUT WORK ZONE	WITH WORK ZONE		
MID-1 AM	202	0.0	1500	202	0	0.44	0	66.0	49.0	44.6	
1-2 AM	154	0.0	1500	154	0	0.44	0	66.1	49.1	44.8	
2-3 AM	154	0.0	1500	154	0	0.44	0	66.1	49.1	44.8	
3-4 AM	179	0.0	1500	179	0	0.44	0	66.1	49.1	44.8	
4-5 AM	294	0.0	1500	294	0	0.45	0	65.8	48.6	44.3	
5-6 AM	747	0.0	1500	747	0	0.49	0	65.0	46.9	42.6	
6-7 AM	1392	0.0	1499	1392	0	1.01	5	63.8	36.1	34.0	
7-8 AM	1989	0.0	1500	1989	0	9.55+	263	62.7	10.6	30.8	
8-9 AM	1535	0.0	1499	1363	171	15.80+	399	63.5	8.1	30.8	
9-10 AM	1599	0.0	1500	1558	41	16.32+	413	63.4	8.0	30.8	
10-11 AM	1759	0.0	1500	1501	258	17.30+	439	63.1	7.8	30.8	
11AM-NOON	1960	0.0	1500	1501	459	17.32+	440	62.7	7.8	30.8	
NOON-1PM	2040	0.0	1500	1501	539	17.33+	440	62.6	7.8	30.8	
1-2 PM	2234	0.0	1500	1501	733	17.34+	441	62.2	7.8	30.8	
2-3 PM	2461	0.0	1500	1501	960	17.34+	442	61.3	7.8	30.8	
3-4 PM	2697	0.0	1500	1508	1189	17.37+	446	58.9	7.8	30.8	
4-5 PM	2873	0.0	1500	1507	1366	17.58+	454	57.1	7.7	30.8	
5-6 PM	2857	0.0	1500	1497	1360	17.58+	453	57.3	7.7	30.8	
6-7 PM	2282	0.0	1500	1498	784	17.34+	441	62.2	7.8	30.8	
7-8 PM	1657	0.0	1500	1485	173	17.25+	437	63.3	7.8	30.8	
8-9 PM	1191	0.0	1499	1191	0	11.64+	302	64.1	9.4	32.2	
9-10 PM	934	0.0	1500	934	0	0.79	15	64.6	40.2	41.8	
10-11 PM	625	0.0	1500	625	0	0.48	0	65.2	47.4	43.0	
11PM-MID	447	0.0	1500	447	0	0.47	0	65.6	48.1	43.7	

+ INDICATES QUEUEING EXCEEDS USER-SPECIFIED MAXIMUM LIMIT

*----- SITE BREAKDOWN DELAYS -----*	
BREAKDOWN DURATION (MINS)	0
RANGE OF QUEUE DELAY - MIN (VEH-H) MAX	0.0
AV BREAKDOWNS PER DAY	0.00
AV QUEUE DELAY/DAY (VEH-H)	0.0
AV TOTAL DELAY/DAY (VEH-H)	0.0

*----- SITE ACCIDENT DELAYS -----*	
BREAKDOWN DURATION (MINS)	0
RANGE OF QUEUE DELAY - MIN (VEH-H) MAX	0
AV BREAKDOWNS PER DAY	0
AV QUEUE DELAY/DAY (VEH-H)	0
AV TOTAL DELAY/DAY (VEH-H)	0

AVERAGE ACCIDENT NUMBERS (PIA/DAY)	
MAIN ROUTE WITHOUT WORKS	0.0076
MAIN ROUTE WITH WORKS	0.0041
'DIVERSION'	0.0041

PIA: Personal Injury Accidents

ECONOMIC IMPACT ON ROAD USERS	
ROAD USER COSTS PER DAY	\$109,578
CONGESTED HOURS PER DAY*	14

\*Delays Exceeding User-Specified Maximum

**USH 41: 9TH AVE TO STH 44 (WINNEBAGO COUNTY)  
 CONTINUOUS (24 HOUR) CLOSURE  
 NO DIVERSION ROUTE (MAX QUEUE METHOD)**

**OCTOBER**

Analyzed for 2009  
 Construction Season

**GRAPHICAL REPRESENTATION OF TRAFFIC MODEL INPUT AND OUTPUT**  
**FRIDAY NORTHBOUND DIRECTION**

