

IH 43: STH 42 TO STH 28 (SHEBOYGAN COUNTY) CONTINUOUS (24 HOUR) CLOSURE DIVERSION ROUTE: STH 28 - CTH TA - STH 23	MAY
	Analyzed for 2009 Construction Season

SUMMARY OF TRAFFIC MODEL OUTPUT

SUNDAY SOUTHBOUND DIRECTION

TIME OF DAY	FLOWS AND CAPACITY IN VEH/HR						AVERAGE SPEEDS IN MPH								
	MAIN ROUTE		ALTERNATE ROUTE		SITE CAPA CITY	FLOW MAIN ROUTE	FLOW DIVER -TING	TOTAL DIVN FLOW	AV.DEL PER VEH (MINS)	AVERAGE QUEUE (VEH)	MAIN ROUTE		ALTERNATE ROUTE		
	DEMAND FLOW	PCT HEAVY	NORMAL FLOW	PCT HEAVY							WITHOUT WORK ZN	WITH WORK ZN	SITE	WITHOUT WORK ZN	WITH WORK ZN
MID-1 AM	113	0.0	55	0.0	1500	113	0	55	0.43	0	66.2	55.9	45.0	24.4	24.4
1-2 AM	78	0.0	38	0.0	1500	78	0	38	0.43	0	66.3	56.0	45.2	24.5	24.5
2-3 AM	62	0.0	30	0.0	1500	62	0	30	0.43	0	66.3	56.1	45.3	24.6	24.6
3-4 AM	76	0.0	37	0.0	1500	76	0	37	0.43	0	66.3	56.0	45.2	24.5	24.5
4-5 AM	106	0.0	51	0.0	1500	106	0	51	0.43	0	66.2	55.9	45.1	24.5	24.5
5-6 AM	146	0.0	71	0.0	1500	146	0	71	0.44	0	66.1	55.8	44.9	24.3	24.3
6-7 AM	224	0.0	109	0.0	1500	224	0	109	0.44	0	66.0	55.5	44.6	24.0	24.0
7-8 AM	393	0.0	191	0.0	1500	393	0	191	0.46	0	65.6	55.0	43.9	23.3	23.3
8-9 AM	629	0.0	304	0.0	1500	629	0	304	0.48	0	65.2	54.2	43.0	22.5	22.5
9-10 AM	905	0.0	438	0.0	1500	905	0	438	0.51	0	64.7	53.4	42.0	21.5	21.5
10-11 AM	1255	0.0	609	0.0	1500	1255	0	609	0.71	0	64.0	49.6	36.8	20.2	20.2
11A-NOON	1447	0.0	701	0.0	1500	1447	0	701	0.96	0	63.7	45.8	31.9	19.4	19.4
NOON-1PM	1388	0.0	673	0.0	1500	1388	0	673	0.88	0	63.8	46.9	33.3	19.7	19.7
1-2 PM	1453	0.0	704	0.0	1499	1453	0	704	0.96	0	63.7	45.7	31.8	19.4	19.4
2-3 PM	1528	0.0	741	0.0	1499	1528	0	741	1.43	11	63.5	40.2	30.8	19.1	19.1
3-4 PM	1538	0.0	745	0.0	1499	1538	0	745	2.66	44	63.5	30.4	30.8	19.1	19.1
4-5 PM	1596	0.0	773	0.0	1500	1596	0	773	5.28	118	63.4	20.1	30.8	18.9	18.9
5-6 PM	1411	0.0	684	0.0	1499	1411	0	684	5.73	129	63.8	19.1	30.9	19.6	19.6
6-7 PM	1218	0.0	590	0.0	1500	1217	0	590	0.98	11	64.1	45.6	37.4	20.3	20.3
7-8 PM	1006	0.0	488	0.0	1500	1006	0	488	0.52	0	64.5	53.1	41.7	21.1	21.1
8-9 PM	698	0.0	338	0.0	1500	698	0	338	0.49	0	65.1	54.0	42.8	22.2	22.2
9-10 PM	487	0.0	236	0.0	1500	487	0	236	0.47	0	65.5	54.7	43.5	23.0	23.0
10-11 PM	300	0.0	146	0.0	1500	300	0	146	0.45	0	65.8	55.3	44.3	23.7	23.7
11PM-MID	160	0.0	77	0.0	1500	160	0	77	0.44	0	66.1	55.7	44.8	24.2	24.2

----- SITE BREAKDOWN DELAYS -----	
BREAKDOWN DURATION (MINS)	0
RANGE OF QUEUE DELAY - MIN (VEH-H) MAX	0.0
RANGE OF DIVN DELAY - MIN (VEH-H) MAX	0.0
AV BREAKDOWNS PER DAY	0.00
AV QUEUE DELAY/DAY (VEH-H)	0.0
AV DIVN DELAY/DAY (VEH-H)	0.0
AV TOTAL DELAY/DAY (VEH-H)	0.0

----- SITE ACCIDENT DELAYS -----	
ACCIDENT DURATION (MINS)	0
RANGE OF QUEUE DELAY - MIN (VEH-H) MAX	0.0
RANGE OF DIVN DELAY - MIN (VEH-H) MAX	0.0
AV ACCIDENTS PER DAY	0.00
AV QUEUE DELAY/DAY (VEH-H)	0.0
AV DIVN DELAY/DAY (VEH-H)	0.0
AV TOTAL DELAY/DAY (VEH-H)	0.0

AVERAGE ACCIDENT NUMBERS (PIA/DAY)	
MAIN ROUTE WITHOUT WORKS	0.0075
MAIN ROUTE WITH WORKS	0.0063
DIVERSION	0.0394

PIA: Personal Injury Accidents

IMPACTS ON ROAD USERS	
ROAD USER COSTS PER DAY (DOLLARS)	\$8,633
CONGESTED HOURS PER DAY*	0

*Delays Exceeding 15 Minutes

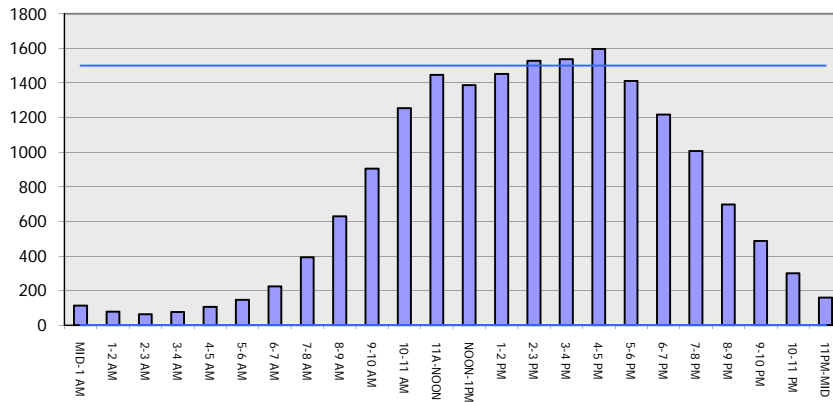
IH 43: STH 42 TO STH 28 (SHEBOYGAN COUNTY)
CONTINUOUS (24 HOUR) CLOSURE
DIVERSION ROUTE: STH 28 - CTH TA - STH 23

MAY
 Analyzed for 2009
 Construction Season

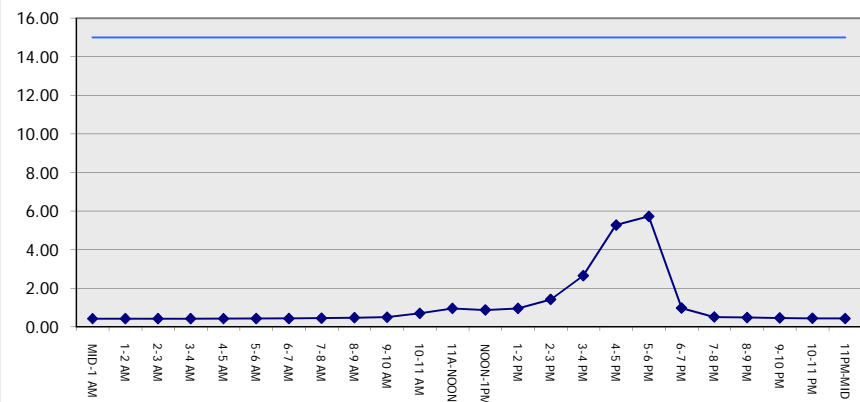
GRAPHICAL REPRESENTATION OF TRAFFIC MODEL INPUT AND OUTPUT

SUNDAY SOUTHBOUND DIRECTION

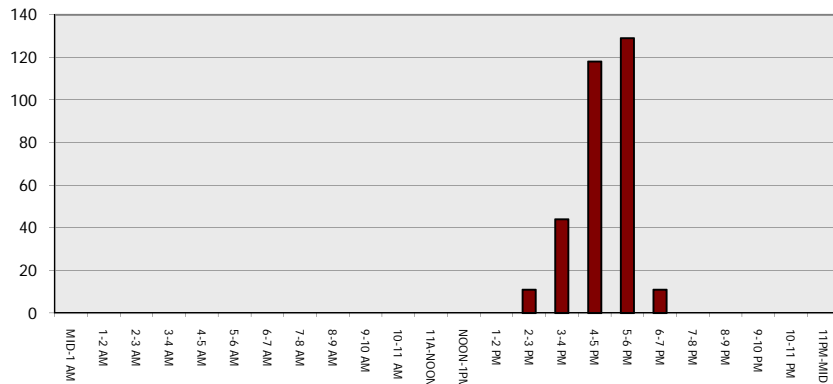
Main Route - Traffic Demand (Vehicles Per Hour)



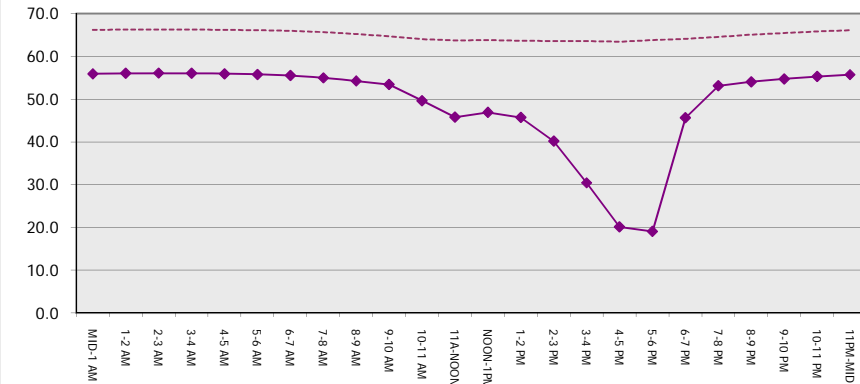
Main Route Average Delay Per Vehicle (Minutes)



Main Route - Average Queue Length (Vehicles)



Main Route - Average Speed (MPH)



IH 43: STH 42 TO STH 28 (SHEBOYGAN COUNTY) CONTINUOUS (24 HOUR) CLOSURE DIVERSION ROUTE: STH 28 - CTH TA - STH 23	MAY
	Analyzed for 2009 Construction Season

SUMMARY OF TRAFFIC MODEL OUTPUT

SUNDAY NORTHBOUND DIRECTION

TIME OF DAY	FLOWS AND CAPACITY IN VEH/HR								AVERAGE SPEEDS IN MPH						
	MAIN		DIVERSION		SITE CAPA CITY	FLOW MAIN ROUTE	FLOW DIVER -TING	TOTAL DIVN FLOW	AV.DEL PER VEH (MINS)	AVERAGE QUEUE (VEH)	MAIN ROUTE		SITE	ALTERNATE ROUTE	
	DEMAND FLOW	PCT HEAVY	NORMAL FLOW	PCT HEAVY							WITHOUT WORK ZN	WITH WORK ZN		WITHOUT WORK ZN	WITH WORK ZN
MID-1 AM	140	0.0	68	0.0	1500	140	0	68	0.44	0	66.1	55.8	44.9	24.3	24.3
1-2 AM	94	0.0	46	0.0	1500	94	0	46	0.43	0	66.2	56.0	45.1	24.5	24.5
2-3 AM	63	0.0	30	0.0	1500	63	0	30	0.43	0	66.3	56.1	45.3	24.6	24.6
3-4 AM	57	0.0	27	0.0	1500	57	0	27	0.43	0	66.3	56.1	45.3	24.7	24.7
4-5 AM	72	0.0	36	0.0	1500	72	0	36	0.43	0	66.3	56.0	45.2	24.6	24.6
5-6 AM	113	0.0	55	0.0	1500	113	0	55	0.43	0	66.2	55.9	45.0	24.4	24.4
6-7 AM	192	0.0	92	0.0	1500	192	0	92	0.44	0	66.0	55.6	44.7	24.2	24.2
7-8 AM	324	0.0	157	0.0	1500	324	0	157	0.45	0	65.8	55.2	44.2	23.7	23.7
8-9 AM	484	0.0	234	0.0	1500	484	0	234	0.47	0	65.5	54.7	43.6	23.0	23.0
9-10 AM	723	0.0	351	0.0	1500	723	0	351	0.49	0	65.0	54.0	42.7	22.2	22.2
10-11 AM	952	0.0	462	0.0	1500	952	0	462	0.51	0	64.6	53.2	41.9	21.3	21.3
11A-NOON	1027	0.0	497	0.0	1500	1027	0	497	0.52	0	64.5	53.0	41.6	21.1	21.1
NOON-1PM	1030	0.0	499	0.0	1500	1030	0	499	0.52	0	64.5	53.0	41.5	21.0	21.0
1-2 PM	1010	0.0	489	0.0	1500	1010	0	489	0.52	0	64.5	53.1	41.7	21.1	21.1
2-3 PM	992	0.0	481	0.0	1500	992	0	481	0.52	0	64.5	53.1	41.7	21.2	21.2
3-4 PM	1055	0.0	511	0.0	1500	1055	0	511	0.52	0	64.4	52.9	41.5	20.9	20.9
4-5 PM	1160	0.0	562	0.0	1500	1160	0	562	0.58	0	64.2	51.7	39.8	20.6	20.6
5-6 PM	1126	0.0	546	0.0	1500	1126	0	546	0.54	0	64.3	52.5	41.0	20.7	20.7
6-7 PM	902	0.0	437	0.0	1500	902	0	437	0.51	0	64.7	53.4	42.0	21.5	21.5
7-8 PM	754	0.0	365	0.0	1500	754	0	365	0.50	0	65.0	53.8	42.5	22.0	22.0
8-9 PM	575	0.0	279	0.0	1500	575	0	279	0.48	0	65.3	54.4	43.2	22.7	22.7
9-10 PM	398	0.0	193	0.0	1500	398	0	193	0.46	0	65.6	55.0	43.9	23.3	23.3
10-11 PM	252	0.0	122	0.0	1500	252	0	122	0.45	0	65.9	55.5	44.5	23.9	23.9
11PM-MID	178	0.0	86	0.0	1500	178	0	86	0.44	0	66.1	55.6	44.8	24.2	24.2

----- SITE BREAKDOWN DELAYS -----	
BREAKDOWN DURATION (MINS)	0
RANGE OF QUEUE DELAY - MIN	0.0
(VEH-H) MAX	0.0
RANGE OF DIVN DELAY - MIN	0.0
(VEH-H) MAX	0.0
AV BREAKDOWNS PER DAY	0.00
AV QUEUE DELAY/DAY (VEH-H)	0.0
AV DIVN DELAY/DAY (VEH-H)	0.0
AV TOTAL DELAY/DAY (VEH-H)	0.0

----- SITE ACCIDENT DELAYS -----	
ACCIDENT DURATION (MINS)	0
RANGE OF QUEUE DELAY - MIN	0.0
(VEH-H) MAX	0.0
RANGE OF DIVN DELAY - MIN	0.0
(VEH-H) MAX	0.0
AV ACCIDENTS PER DAY	0.00
AV QUEUE DELAY/DAY (VEH-H)	0.0
AV DIVN DELAY/DAY (VEH-H)	0.0
AV TOTAL DELAY/DAY (VEH-H)	0.0

AVERAGE ACCIDENT NUMBERS (PIA/DAY)	
MAIN ROUTE WITHOUT WORKS	0.0057
MAIN ROUTE WITH WORKS	0.0047
DIVERSION	0.0296

PIA: Personal Injury Accidents

IMPACTS ON ROAD USERS	
ROAD USER COSTS PER DAY (DOLLARS)	\$1,909
CONGESTED HOURS PER DAY*	0

*Delays Exceeding 15 Minutes

**IH 43: STH 42 TO STH 28 (SHEBOYGAN COUNTY)
CONTINUOUS (24 HOUR) CLOSURE
DIVERSION ROUTE: STH 28 - CTH TA - STH 23**

MAY
Analyzed for 2009
Construction Season

GRAPHICAL REPRESENTATION OF TRAFFIC MODEL INPUT AND OUTPUT

SUNDAY NORTHBOUND DIRECTION

