

IH 43: STH 42 TO STH 28 (SHEBOYGAN COUNTY) CONTINUOUS (24 HOUR) CLOSURE DIVERSION ROUTE: STH 28 - CTH TA - STH 23	MAY
	Analyzed for 2009 Construction Season

SUMMARY OF TRAFFIC MODEL OUTPUT

FRIDAY SOUTHBOUND DIRECTION

TIME OF DAY	FLOWS AND CAPACITY IN VEH/HR							AVERAGE SPEEDS IN MPH							
	MAIN ROUTE		ALTERNATE ROUTE		SITE CAPA CITY	FLOW MAIN ROUTE	FLOW DIVER -TING	TOTAL DIVN FLOW	AV.DEL PER VEH (MINS)	AVERAGE QUEUE (VEH)	MAIN ROUTE		ALTERNATE ROUTE		
	DEMAND FLOW	PCT HEAVY	NORMAL FLOW	PCT HEAVY							WITHOUT WORK ZN	WITH WORK ZN	SITE	WITHOUT WORK ZN	WITH WORK ZN
MID-1 AM	81	0.0	40	0.0	1500	81	0	40	0.43	0	66.3	56.0	45.1	24.5	24.5
1-2 AM	75	0.0	37	0.0	1500	75	0	37	0.43	0	66.3	56.0	45.2	24.5	24.5
2-3 AM	79	0.0	39	0.0	1500	79	0	39	0.43	0	66.3	56.0	45.1	24.5	24.5
3-4 AM	124	0.0	60	0.0	1500	124	0	60	0.43	0	66.1	55.8	45.0	24.4	24.4
4-5 AM	269	0.0	130	0.0	1500	269	0	130	0.45	0	65.9	55.4	44.4	23.8	23.8
5-6 AM	580	0.0	281	0.0	1500	580	0	281	0.48	0	65.3	54.4	43.2	22.7	22.7
6-7 AM	1052	0.0	510	0.0	1500	1052	0	510	0.52	0	64.4	53.0	41.5	20.9	20.9
7-8 AM	1121	0.0	543	0.0	1500	1121	0	543	0.53	0	64.3	52.7	41.2	20.7	20.7
8-9 AM	885	0.0	428	0.0	1500	885	0	428	0.51	0	64.7	53.5	42.1	21.5	21.5
9-10 AM	944	0.0	458	0.0	1500	944	0	458	0.51	0	64.6	53.3	41.9	21.3	21.3
10-11 AM	900	0.0	436	0.0	1500	900	0	436	0.51	0	64.7	53.4	42.0	21.5	21.5
11A-NOON	934	0.0	453	0.0	1500	934	0	453	0.51	0	64.6	53.3	41.9	21.4	21.4
NOON-1PM	949	0.0	460	0.0	1500	949	0	460	0.51	0	64.6	53.3	41.9	21.3	21.3
1-2 PM	1110	0.0	538	0.0	1500	1110	0	538	0.53	0	64.3	52.8	41.3	20.7	20.7
2-3 PM	1064	0.0	515	0.0	1500	1064	0	515	0.53	0	64.4	52.9	41.5	20.9	20.9
3-4 PM	1214	0.0	589	0.0	1500	1214	0	589	0.66	0	64.1	50.5	38.0	20.3	20.3
4-5 PM	1355	0.0	658	0.0	1500	1355	0	658	0.84	0	63.8	47.5	34.0	19.8	19.8
5-6 PM	1322	0.0	640	0.0	1500	1322	0	640	0.79	0	63.9	48.2	34.9	19.9	19.9
6-7 PM	936	0.0	454	0.0	1500	936	0	454	0.51	0	64.6	53.3	41.9	21.4	21.4
7-8 PM	674	0.0	327	0.0	1500	674	0	327	0.49	0	65.1	54.1	42.8	22.4	22.4
8-9 PM	482	0.0	233	0.0	1500	482	0	233	0.47	0	65.5	54.7	43.6	23.0	23.0
9-10 PM	408	0.0	198	0.0	1500	408	0	198	0.46	0	65.6	55.0	43.8	23.3	23.3
10-11 PM	271	0.0	132	0.0	1500	271	0	132	0.45	0	65.9	55.4	44.4	23.8	23.8
11PM-MID	199	0.0	96	0.0	1500	199	0	96	0.44	0	66.0	55.6	44.7	24.1	24.1

----- SITE BREAKDOWN DELAYS -----	
BREAKDOWN DURATION (MINS)	0
RANGE OF QUEUE DELAY - MIN	0.0
(VEH-H) MAX	0.0
RANGE OF DIVN DELAY - MIN	0.0
(VEH-H) MAX	0.0
AV BREAKDOWNS PER DAY	0.00
AV QUEUE DELAY/DAY (VEH-H)	0.0
AV DIVN DELAY/DAY (VEH-H)	0.0
AV TOTAL DELAY/DAY (VEH-H)	0.0

----- SITE ACCIDENT DELAYS -----	
ACCIDENT DURATION (MINS)	0
RANGE OF QUEUE DELAY - MIN	0.0
(VEH-H) MAX	0.0
RANGE OF DIVN DELAY - MIN	0.0
(VEH-H) MAX	0.0
AV ACCIDENTS PER DAY	0.00
AV QUEUE DELAY/DAY (VEH-H)	0.0
AV DIVN DELAY/DAY (VEH-H)	0.0
AV TOTAL DELAY/DAY (VEH-H)	0.0

AVERAGE ACCIDENT NUMBERS (PIA/DAY)	
MAIN ROUTE WITHOUT WORKS	0.0070
MAIN ROUTE WITH WORKS	0.0059
DIVERSION	0.0369

PIA: Personal Injury Accidents

IMPACTS ON ROAD USERS	
ROAD USER COSTS PER DAY (DOLLARS)	\$2,401
CONGESTED HOURS PER DAY*	0

*Delays Exceeding 15 Minutes

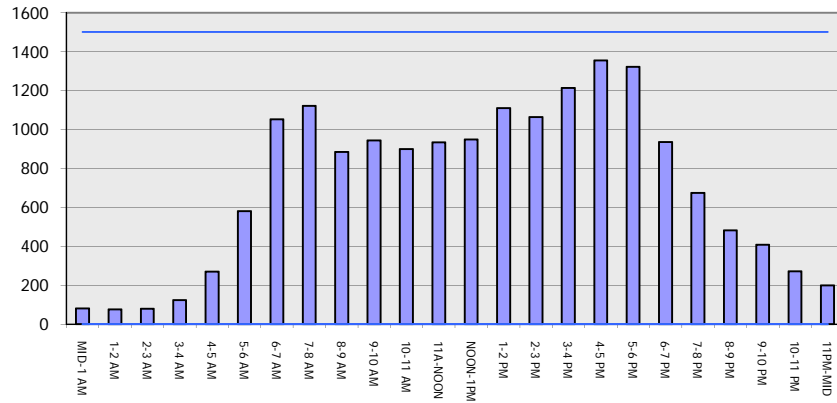
**IH 43: STH 42 TO STH 28 (SHEBOYGAN COUNTY)
 CONTINUOUS (24 HOUR) CLOSURE
 DIVERSION ROUTE: STH 28 - CTH TA - STH 23**

MAY
 Analyzed for 2009
 Construction Season

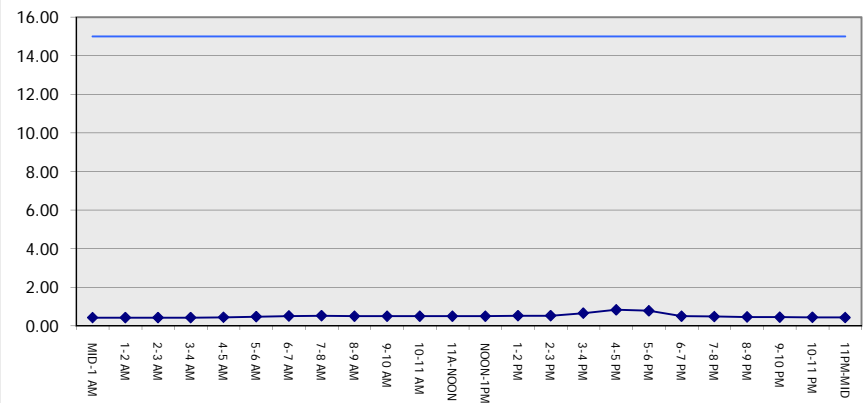
GRAPHICAL REPRESENTATION OF TRAFFIC MODEL INPUT AND OUTPUT

FRIDAY SOUTHBOUND DIRECTION

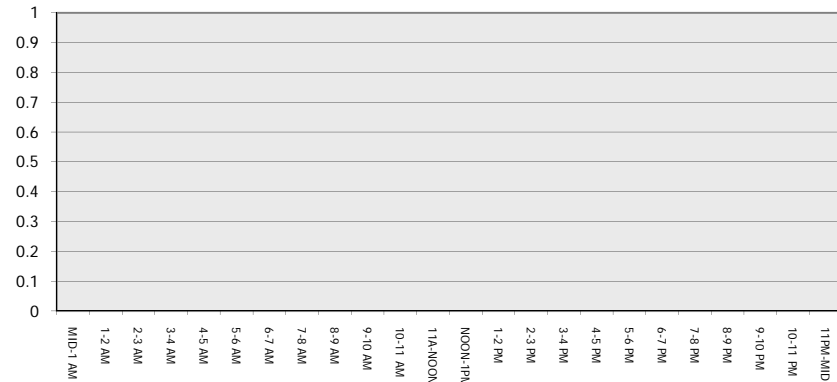
Main Route - Traffic Demand (Vehicles Per Hour)



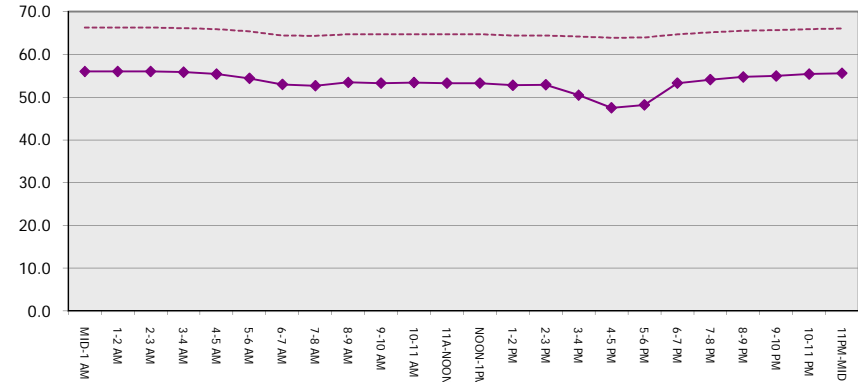
Main Route Average Delay Per Vehicle (Minutes)



Main Route - Average Queue Length (Vehicles)



Main Route - Average Speed (MPH)



IH 43: STH 42 TO STH 28 (SHEBOYGAN COUNTY) CONTINUOUS (24 HOUR) CLOSURE DIVERSION ROUTE: STH 28 - CTH TA - STH 23	MAY
	Analyzed for 2009 Construction Season

SUMMARY OF TRAFFIC MODEL OUTPUT

FRIDAY NORTHBOUND DIRECTION

TIME OF DAY	FLOWS AND CAPACITY IN VEH/HR								AVERAGE SPEEDS IN MPH						
	MAIN		DIVERSION		SITE CAPA CITY	FLOW MAIN ROUTE	FLOW DIVER -TING	TOTAL DIVN FLOW	AV.DEL PER VEH (MINS)	AVERAGE QUEUE (VEH)	MAIN ROUTE		SITE	ALTERNATE ROUTE	
	DEMAND FLOW	PCT HEAVY	NORMAL FLOW	PCT HEAVY							WITHOUT WORK ZN	WITH WORK ZN		WITHOUT WORK ZN	WITH WORK ZN
MID-1 AM	201	0.0	97	0.0	1500	201	0	97	0.44	0	66.0	55.6	44.6	24.1	24.1
1-2 AM	131	0.0	64	0.0	1500	131	0	64	0.44	0	66.1	55.8	45.0	24.3	24.3
2-3 AM	91	0.0	44	0.0	1500	91	0	44	0.43	0	66.2	56.0	45.1	24.5	24.5
3-4 AM	116	0.0	56	0.0	1500	116	0	56	0.43	0	66.2	55.9	45.0	24.4	24.4
4-5 AM	168	0.0	81	0.0	1500	168	0	81	0.44	0	66.1	55.7	44.8	24.2	24.2
5-6 AM	369	0.0	179	0.0	1500	369	0	179	0.46	0	65.7	55.1	44.0	23.5	23.5
6-7 AM	756	0.0	366	0.0	1500	756	0	366	0.50	0	65.0	53.8	42.5	22.0	22.0
7-8 AM	995	0.0	483	0.0	1500	995	0	483	0.52	0	64.5	53.1	41.7	21.1	21.1
8-9 AM	942	0.0	457	0.0	1500	942	0	457	0.51	0	64.6	53.3	41.9	21.4	21.4
9-10 AM	1047	0.0	507	0.0	1500	1047	0	507	0.52	0	64.5	53.0	41.5	20.9	20.9
10-11 AM	1145	0.0	555	0.0	1500	1145	0	555	0.57	0	64.3	52.1	40.3	20.6	20.6
11A-NOON	1262	0.0	612	0.0	1500	1262	0	612	0.72	0	64.0	49.4	36.6	20.1	20.1
NOON-1PM	1382	0.0	670	0.0	1500	1382	0	670	0.87	0	63.8	47.0	33.4	19.7	19.7
1-2 PM	1469	0.0	711	0.0	1499	1469	0	711	0.98	0	63.7	45.4	31.4	19.4	19.4
2-3 PM	1624	0.0	787	0.0	1499	1624	0	787	2.58	49	63.3	30.9	30.8	18.8	18.8
3-4 PM	1891	0.0	916	0.0	1500	1715	177	1093	10.44	265	62.8	12.4	30.8	17.8	16.8
4-5 PM	2075	0.0	1006	0.0	1500	1556	519	1525+	15.03	379	62.5	10.0	30.8	17.1	14.0
5-6 PM	1916	0.0	928	0.0	1499	1426	490	1418+	13.99	351	62.8	10.4	30.8	17.7	14.7
6-7 PM	1721	0.0	834	0.0	1500	1432	288	1122	11.64	287	63.2	11.4	30.8	18.4	16.5
7-8 PM	1210	0.0	586	0.0	1499	1193	17	604	3.82	121	64.1	24.9	34.9	20.4	20.2
8-9 PM	910	0.0	441	0.0	1500	910	0	441	0.51	0	64.7	53.3	42.0	21.4	21.4
9-10 PM	764	0.0	370	0.0	1500	764	0	370	0.50	0	65.0	53.8	42.5	22.0	22.0
10-11 PM	587	0.0	284	0.0	1500	587	0	284	0.48	0	65.3	54.3	43.2	22.7	22.7
11PM-MID	437	0.0	212	0.0	1500	437	0	212	0.46	0	65.6	54.8	43.7	23.2	23.2

+ INDICATES DIVERSION FLOW EXCEEDS USER-SPECIFIED WARNING LIMIT

----- SITE BREAKDOWN DELAYS -----	
BREAKDOWN DURATION (MINS)	0
RANGE OF QUEUE DELAY - MIN	0.0
(VEH-H) MAX	0.0
RANGE OF DIVN DELAY - MIN	0.0
(VEH-H) MAX	0.0
AV BREAKDOWNS PER DAY	0.00
AV QUEUE DELAY/DAY (VEH-H)	0.0
AV DIVN DELAY/DAY (VEH-H)	0.0
AV TOTAL DELAY/DAY (VEH-H)	0.0

----- SITE ACCIDENT DELAYS -----	
ACCIDENT DURATION (MINS)	0
RANGE OF QUEUE DELAY - MIN	0.0
(VEH-H) MAX	0.0
RANGE OF DIVN DELAY - MIN	0.0
(VEH-H) MAX	0.0
AV ACCIDENTS PER DAY	0.00
AV QUEUE DELAY/DAY (VEH-H)	0.0
AV DIVN DELAY/DAY (VEH-H)	0.0
AV TOTAL DELAY/DAY (VEH-H)	0.0

AVERAGE ACCIDENT NUMBERS (PIA/DAY)	
MAIN ROUTE WITHOUT WORKS	0.0096
MAIN ROUTE WITH WORKS	0.0075
DIVERSION	0.0569

PIA: Personal Injury Accidents

IMPACTS ON ROAD USERS	
ROAD USER COSTS PER DAY (DOLLARS)	\$28,595
CONGESTED HOURS PER DAY*	1

*Delays Exceeding 15 Minutes

**IH 43: STH 42 TO STH 28 (SHEBOYGAN COUNTY)
 CONTINUOUS (24 HOUR) CLOSURE
 DIVERSION ROUTE: STH 28 - CTH TA - STH 23**

MAY
 Analyzed for 2009
 Construction Season

GRAPHICAL REPRESENTATION OF TRAFFIC MODEL INPUT AND OUTPUT
FRIDAY NORTHBOUND DIRECTION

