

STH 29: CTH Q TO CTH D (SHAWANO COUNTY) CONTINUOUS (24 HOUR) CLOSURE DIVERSION ROUTE: CTH Q - CTH D	MAY
	Analyzed for 2009 Construction Season

SUMMARY OF TRAFFIC MODEL OUTPUT

SUNDAY WESTBOUND DIRECTION

TIME OF DAY	FLOWS AND CAPACITY IN VEH/HR								AVERAGE SPEEDS IN MPH						
	MAIN ROUTE		ALTERNATE ROUTE		SITE CAPA CITY	FLOW MAIN ROUTE	FLOW DIVER -TING	TOTAL DIVN FLOW	AV.DEL PER VEH (MINS)	AVERAGE QUEUE (VEH)	MAIN ROUTE		ALTERNATE ROUTE		
	DEMAND FLOW	PCT HEAVY	NORMAL FLOW	PCT HEAVY							WITHOUT WORK ZN	WITH WORK ZN	SITE	WITHOUT WORK ZN	WITH WORK ZN
MID-1 AM	28	0.0	4	0.0	1500	28	0	4	0.50	0	63.8	60.7	41.9	24.8	24.8
1-2 AM	22	0.0	3	0.0	1500	22	0	3	0.50	0	63.8	60.7	41.9	24.8	24.8
2-3 AM	18	0.0	3	0.0	1500	18	0	3	0.50	0	63.8	60.7	41.9	24.8	24.8
3-4 AM	20	0.0	3	0.0	1500	20	0	3	0.50	0	63.8	60.7	41.9	24.8	24.8
4-5 AM	17	0.0	3	0.0	1500	17	0	3	0.50	0	63.8	60.7	41.9	24.8	24.8
5-6 AM	28	0.0	4	0.0	1500	28	0	4	0.50	0	63.8	60.7	41.9	24.8	24.8
6-7 AM	45	0.0	7	0.0	1500	45	0	7	0.50	0	63.8	60.6	41.9	24.8	24.8
7-8 AM	79	0.0	13	0.0	1500	79	0	13	0.51	0	63.8	60.5	41.7	24.7	24.7
8-9 AM	129	0.0	21	0.0	1500	129	0	21	0.51	0	63.7	60.4	41.5	24.7	24.7
9-10 AM	188	0.0	30	0.0	1500	188	0	30	0.52	0	63.5	60.3	41.4	24.6	24.6
10-11 AM	261	0.0	42	0.0	1500	261	0	42	0.52	0	63.4	60.1	41.1	24.5	24.5
11A-NOON	297	0.0	48	0.0	1500	297	0	48	0.53	0	63.3	60.1	41.0	24.5	24.5
NOON-1PM	330	0.0	53	0.0	1500	330	0	53	0.53	0	63.3	60.0	40.9	24.4	24.4
1-2 PM	336	0.0	55	0.0	1500	336	0	55	0.53	0	63.3	59.9	40.9	24.4	24.4
2-3 PM	347	0.0	56	0.0	1500	347	0	56	0.53	0	63.3	59.9	40.8	24.4	24.4
3-4 PM	351	0.0	57	0.0	1500	351	0	57	0.53	0	63.2	59.9	40.8	24.4	24.4
4-5 PM	322	0.0	51	0.0	1500	322	0	51	0.53	0	63.3	60.0	40.9	24.5	24.5
5-6 PM	348	0.0	56	0.0	1500	348	0	56	0.53	0	63.3	59.9	40.8	24.4	24.4
6-7 PM	266	0.0	43	0.0	1500	266	0	43	0.52	0	63.4	60.1	41.0	24.5	24.5
7-8 PM	224	0.0	36	0.0	1500	224	0	36	0.52	0	63.5	60.2	41.2	24.6	24.6
8-9 PM	148	0.0	24	0.0	1500	148	0	24	0.51	0	63.7	60.4	41.5	24.7	24.7
9-10 PM	108	0.0	17	0.0	1500	108	0	17	0.51	0	63.7	60.5	41.6	24.7	24.7
10-11 PM	65	0.0	10	0.0	1500	65	0	10	0.50	0	63.8	60.5	41.8	24.8	24.8
11PM-MID	41	0.0	6	0.0	1500	41	0	6	0.50	0	63.8	60.6	41.9	24.8	24.8

----- SITE BREAKDOWN DELAYS -----	
BREAKDOWN DURATION (MINS)	0
RANGE OF QUEUE DELAY - MIN	0.0
(VEH-H) MAX	0.0
RANGE OF DIVN DELAY - MIN	0.0
(VEH-H) MAX	0.0
AV BREAKDOWNS PER DAY	0.00
AV QUEUE DELAY/DAY (VEH-H)	0.0
AV DIVN DELAY/DAY (VEH-H)	0.0
AV TOTAL DELAY/DAY (VEH-H)	0.0

----- SITE ACCIDENT DELAYS -----	
ACCIDENT DURATION (MINS)	0
RANGE OF QUEUE DELAY - MIN	0.0
(VEH-H) MAX	0.0
RANGE OF DIVN DELAY - MIN	0.0
(VEH-H) MAX	0.0
AV ACCIDENTS PER DAY	0.00
AV QUEUE DELAY/DAY (VEH-H)	0.0
AV DIVN DELAY/DAY (VEH-H)	0.0
AV TOTAL DELAY/DAY (VEH-H)	0.0

AVERAGE ACCIDENT NUMBERS (PIA/DAY)	
MAIN ROUTE WITHOUT WORKS	0.0067
MAIN ROUTE WITH WORKS	0.0071
DIVERSION	0.0116

PIA: Personal Injury Accidents

IMPACTS ON ROAD USERS	
ROAD USER COSTS PER DAY (DOLLARS)	\$546
CONGESTED HOURS PER DAY*	0

*Delays Exceeding 15 Minutes

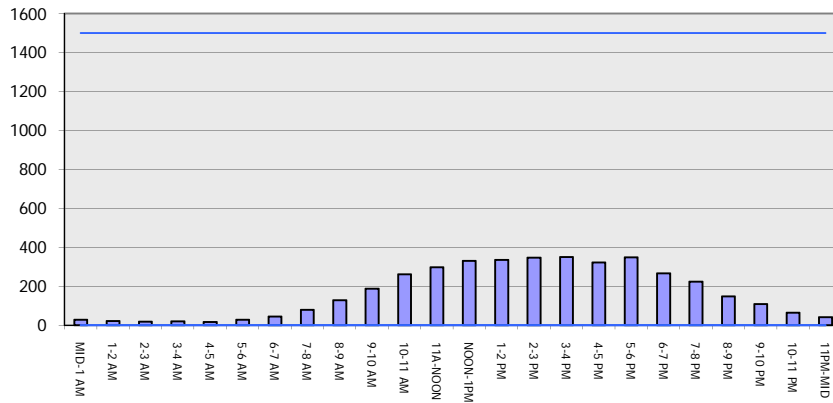
STH 29: CTH Q TO CTH D (SHAWANO COUNTY)
CONTINUOUS (24 HOUR) CLOSURE
DIVERSION ROUTE: CTH Q - CTH D

MAY
 Analyzed for 2009
 Construction Season

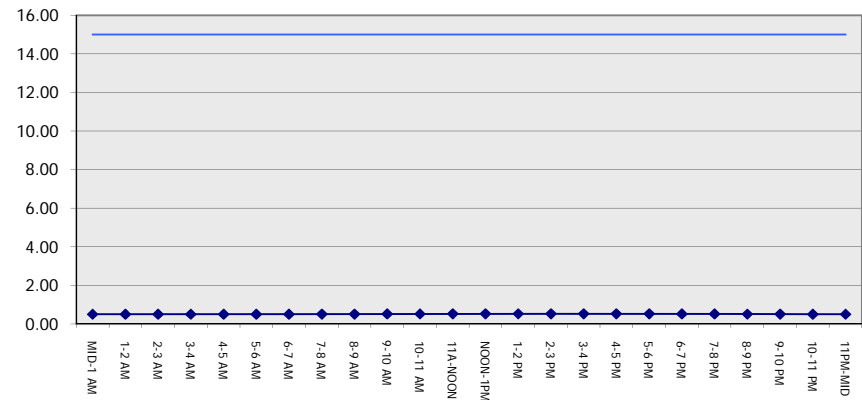
GRAPHICAL REPRESENTATION OF TRAFFIC MODEL INPUT AND OUTPUT

SUNDAY WESTBOUND DIRECTION

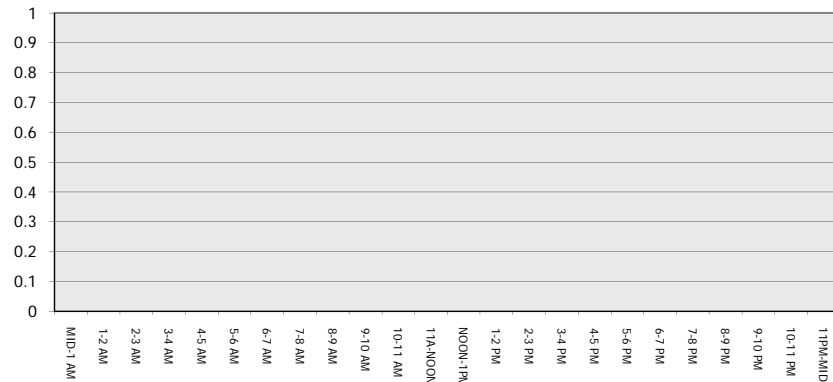
Main Route - Traffic Demand (Vehicles Per Hour)



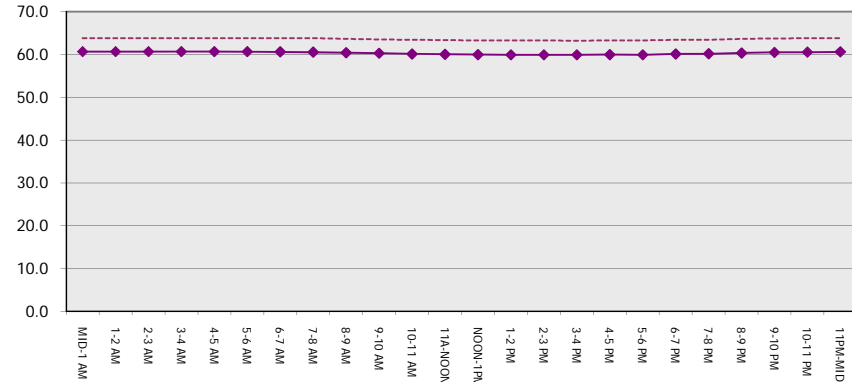
Main Route Average Delay Per Vehicle (Minutes)



Main Route - Average Queue Length (Vehicles)



Main Route - Average Speed (MPH)



STH 29: CTH Q TO CTH D (SHAWANO COUNTY) CONTINUOUS (24 HOUR) CLOSURE DIVERSION ROUTE: CTH Q - CTH D	MAY
	Analyzed for 2009 Construction Season

SUMMARY OF TRAFFIC MODEL OUTPUT

SUNDAY EASTBOUND DIRECTION

TIME OF DAY	FLOWS AND CAPACITY IN VEH/HR								AVERAGE SPEEDS IN MPH						
	MAIN		DIVERSION		SITE CAPA CITY	FLOW MAIN ROUTE	FLOW DIVER -TING	TOTAL DIVN FLOW	AV.DEL PER VEH (MINS)	AVERAGE QUEUE (VEH)	MAIN ROUTE		SITE	ALTERNATE ROUTE	
	DEMAND FLOW	PCT HEAVY	NORMAL FLOW	PCT HEAVY							WITHOUT WORK ZN	WITH WORK ZN		WITHOUT WORK ZN	WITH WORK ZN
MID-1 AM	22	0.0	3	0.0	1500	22	0	3	0.50	0	63.8	60.7	41.9	24.8	24.8
1-2 AM	17	0.0	3	0.0	1500	17	0	3	0.50	0	63.8	60.7	41.9	24.8	24.8
2-3 AM	13	0.0	2	0.0	1500	13	0	2	0.50	0	63.9	60.7	42.0	24.8	24.8
3-4 AM	11	0.0	2	0.0	1500	11	0	2	0.50	0	63.9	60.7	42.0	24.8	24.8
4-5 AM	14	0.0	2	0.0	1500	14	0	2	0.50	0	63.9	60.7	42.0	24.8	24.8
5-6 AM	19	0.0	3	0.0	1500	19	0	3	0.50	0	63.8	60.7	41.9	24.8	24.8
6-7 AM	44	0.0	7	0.0	1500	44	0	7	0.50	0	63.8	60.6	41.9	24.8	24.8
7-8 AM	79	0.0	13	0.0	1500	79	0	13	0.51	0	63.8	60.5	41.7	24.7	24.7
8-9 AM	123	0.0	20	0.0	1500	123	0	20	0.51	0	63.7	60.4	41.5	24.7	24.7
9-10 AM	215	0.0	35	0.0	1500	215	0	35	0.52	0	63.5	60.2	41.2	24.6	24.6
10-11 AM	289	0.0	46	0.0	1500	289	0	46	0.53	0	63.3	60.1	41.0	24.5	24.5
11A-NOON	342	0.0	56	0.0	1500	342	0	56	0.53	0	63.3	59.9	40.8	24.4	24.4
NOON-1PM	354	0.0	57	0.0	1500	354	0	57	0.53	0	63.2	59.9	40.8	24.4	24.4
1-2 PM	387	0.0	62	0.0	1500	387	0	62	0.54	0	63.2	59.9	40.7	24.3	24.3
2-3 PM	402	0.0	65	0.0	1500	402	0	65	0.54	0	63.2	59.8	40.6	24.3	24.3
3-4 PM	432	0.0	69	0.0	1500	432	0	69	0.54	0	63.1	59.7	40.5	24.3	24.3
4-5 PM	424	0.0	68	0.0	1500	424	0	68	0.54	0	63.1	59.7	40.6	24.3	24.3
5-6 PM	353	0.0	57	0.0	1500	353	0	57	0.53	0	63.2	59.9	40.8	24.4	24.4
6-7 PM	311	0.0	50	0.0	1500	311	0	50	0.53	0	63.3	60.0	40.9	24.5	24.5
7-8 PM	248	0.0	40	0.0	1500	248	0	40	0.52	0	63.5	60.2	41.1	24.5	24.5
8-9 PM	167	0.0	27	0.0	1500	167	0	27	0.51	0	63.6	60.3	41.4	24.7	24.7
9-10 PM	108	0.0	17	0.0	1500	108	0	17	0.51	0	63.7	60.5	41.6	24.7	24.7
10-11 PM	59	0.0	9	0.0	1500	59	0	9	0.50	0	63.8	60.5	41.8	24.8	24.8
11PM-MID	42	0.0	6	0.0	1500	42	0	6	0.50	0	63.8	60.6	41.9	24.8	24.8

----- SITE BREAKDOWN DELAYS -----	
BREAKDOWN DURATION (MINS)	0
RANGE OF QUEUE DELAY - MIN	0.0
(VEH-H) MAX	0.0
RANGE OF DIVN DELAY - MIN	0.0
(VEH-H) MAX	0.0
AV BREAKDOWNS PER DAY	0.00
AV QUEUE DELAY/DAY (VEH-H)	0.0
AV DIVN DELAY/DAY (VEH-H)	0.0
AV TOTAL DELAY/DAY (VEH-H)	0.0

----- SITE ACCIDENT DELAYS -----	
ACCIDENT DURATION (MINS)	0
RANGE OF QUEUE DELAY - MIN	0.0
(VEH-H) MAX	0.0
RANGE OF DIVN DELAY - MIN	0.0
(VEH-H) MAX	0.0
AV ACCIDENTS PER DAY	0.00
AV QUEUE DELAY/DAY (VEH-H)	0.0
AV DIVN DELAY/DAY (VEH-H)	0.0
AV TOTAL DELAY/DAY (VEH-H)	0.0

AVERAGE ACCIDENT NUMBERS (PIA/DAY)	
MAIN ROUTE WITHOUT WORKS	0.0074
MAIN ROUTE WITH WORKS	0.0079
DIVERSION	0.0129

PIA: Personal Injury Accidents

IMPACTS ON ROAD USERS	
ROAD USER COSTS PER DAY (DOLLARS)	\$615
CONGESTED HOURS PER DAY*	0

*Delays Exceeding 15 Minutes

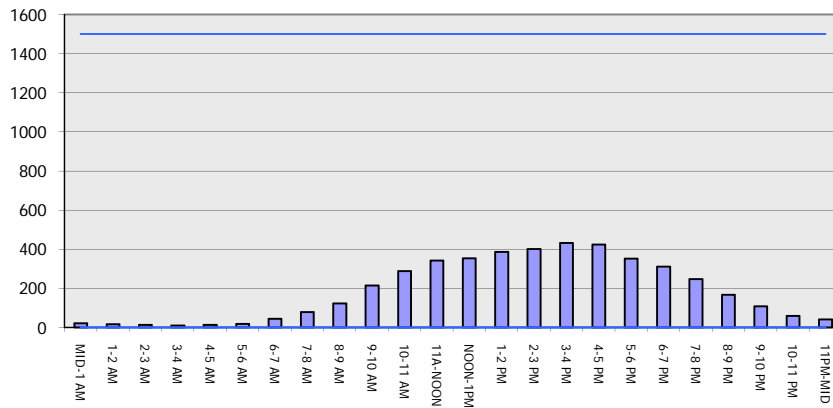
STH 29: CTH Q TO CTH D (SHAWANO COUNTY)
CONTINUOUS (24 HOUR) CLOSURE
DIVERSION ROUTE: CTH Q - CTH D

MAY
 Analyzed for 2009
 Construction Season

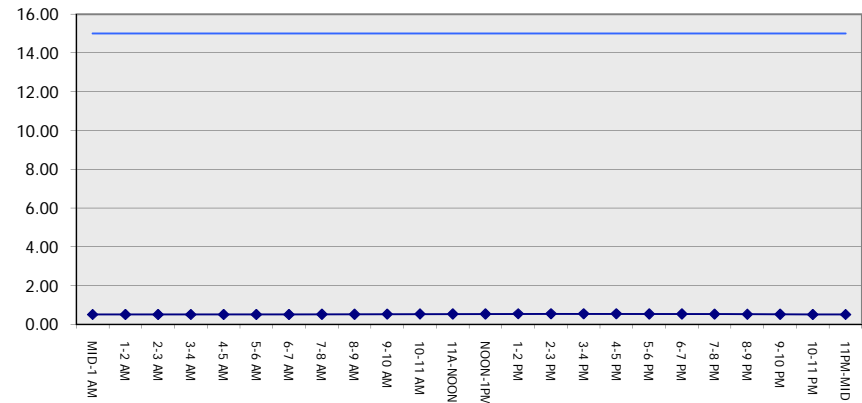
GRAPHICAL REPRESENTATION OF TRAFFIC MODEL INPUT AND OUTPUT

SUNDAY EASTBOUND DIRECTION

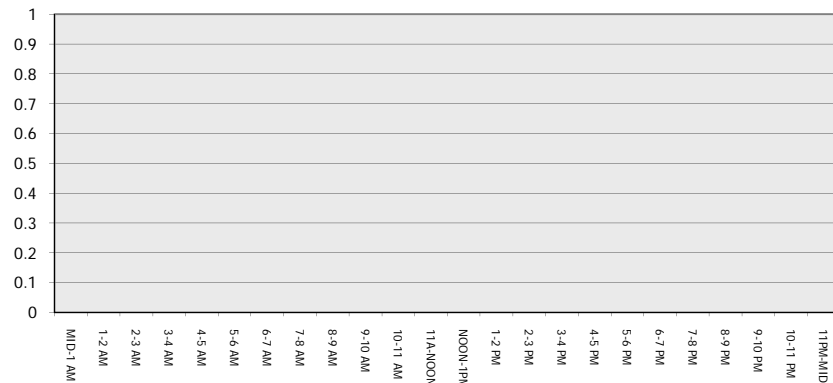
Main Route - Traffic Demand (Vehicles Per Hour)



Main Route Average Delay Per Vehicle (Minutes)



Main Route - Average Queue Length (Vehicles)



Main Route - Average Speed (MPH)

