

<b>STH 29: CTH Q TO CTH D (SHAWANO COUNTY)</b> <b>CONTINUOUS (24 HOUR) CLOSURE</b> <b>DIVERSION ROUTE: CTH Q - CTH D</b>	<b>MAY</b>
	Analyzed for 2009 Construction Season

**SUMMARY OF TRAFFIC MODEL OUTPUT**

**SATURDAY WESTBOUND DIRECTION**

TIME OF DAY	FLOWS AND CAPACITY IN VEH/HR							AVERAGE SPEEDS IN MPH							
	MAIN ROUTE		ALTERNATE ROUTE		SITE CAPA CITY	FLOW MAIN ROUTE	FLOW DIVER -TING	TOTAL DIVN FLOW	AV.DEL PER VEH (MINS)	AVERAGE QUEUE (VEH)	MAIN ROUTE		ALTERNATE ROUTE		
	DEMAND FLOW	PCT HEAVY	NORMAL FLOW	PCT HEAVY							WITHOUT WORK ZN	WITH WORK ZN	SITE	WITHOUT WORK ZN	WITH WORK ZN
MID-1 AM	39	0.0	6	0.0	1500	39	0	6	0.50	0	63.8	60.6	41.9	24.8	24.8
1-2 AM	29	0.0	5	0.0	1500	29	0	5	0.50	0	63.8	60.6	41.9	24.8	24.8
2-3 AM	20	0.0	3	0.0	1500	20	0	3	0.50	0	63.8	60.7	41.9	24.8	24.8
3-4 AM	23	0.0	4	0.0	1500	23	0	4	0.50	0	63.8	60.7	41.9	24.8	24.8
4-5 AM	41	0.0	6	0.0	1500	41	0	6	0.50	0	63.8	60.6	41.9	24.8	24.8
5-6 AM	63	0.0	10	0.0	1500	63	0	10	0.50	0	63.8	60.5	41.8	24.8	24.8
6-7 AM	113	0.0	18	0.0	1500	113	0	18	0.51	0	63.7	60.4	41.6	24.7	24.7
7-8 AM	181	0.0	29	0.0	1500	181	0	29	0.52	0	63.6	60.3	41.4	24.6	24.6
8-9 AM	261	0.0	42	0.0	1500	261	0	42	0.52	0	63.4	60.1	41.1	24.5	24.5
9-10 AM	317	0.0	51	0.0	1500	317	0	51	0.53	0	63.3	60.0	40.9	24.5	24.5
10-11 AM	318	0.0	51	0.0	1500	318	0	51	0.53	0	63.3	60.0	40.9	24.5	24.5
11A-NOON	282	0.0	45	0.0	1500	282	0	45	0.53	0	63.4	60.1	41.0	24.5	24.5
NOON-1PM	254	0.0	41	0.0	1500	254	0	41	0.52	0	63.4	60.1	41.1	24.5	24.5
1-2 PM	243	0.0	39	0.0	1500	243	0	39	0.52	0	63.5	60.2	41.2	24.5	24.5
2-3 PM	263	0.0	42	0.0	1500	263	0	42	0.52	0	63.4	60.1	41.1	24.5	24.5
3-4 PM	209	0.0	34	0.0	1500	209	0	34	0.52	0	63.5	60.2	41.3	24.6	24.6
4-5 PM	206	0.0	34	0.0	1500	206	0	34	0.52	0	63.5	60.2	41.3	24.6	24.6
5-6 PM	193	0.0	31	0.0	1500	193	0	31	0.52	0	63.5	60.3	41.3	24.6	24.6
6-7 PM	183	0.0	29	0.0	1500	183	0	29	0.52	0	63.6	60.3	41.4	24.6	24.6
7-8 PM	133	0.0	21	0.0	1500	133	0	21	0.51	0	63.7	60.4	41.5	24.7	24.7
8-9 PM	112	0.0	18	0.0	1500	112	0	18	0.51	0	63.7	60.4	41.6	24.7	24.7
9-10 PM	112	0.0	18	0.0	1500	112	0	18	0.51	0	63.7	60.4	41.6	24.7	24.7
10-11 PM	86	0.0	14	0.0	1500	86	0	14	0.51	0	63.7	60.5	41.7	24.7	24.7
11PM-MID	62	0.0	10	0.0	1500	62	0	10	0.50	0	63.8	60.5	41.8	24.8	24.8

*----- SITE BREAKDOWN DELAYS -----*	
BREAKDOWN DURATION (MINS)	0
RANGE OF QUEUE DELAY - MIN (VEH-H) MAX	0.0
RANGE OF DIVN DELAY - MIN (VEH-H) MAX	0.0
AV BREAKDOWNS PER DAY	0.00
AV QUEUE DELAY/DAY (VEH-H)	0.0
AV DIVN DELAY/DAY (VEH-H)	0.0
AV TOTAL DELAY/DAY (VEH-H)	0.0

*----- SITE ACCIDENT DELAYS -----*	
ACCIDENT DURATION (MINS)	0
RANGE OF QUEUE DELAY - MIN (VEH-H) MAX	0.0
RANGE OF DIVN DELAY - MIN (VEH-H) MAX	0.0
AV ACCIDENTS PER DAY	0.00
AV QUEUE DELAY/DAY (VEH-H)	0.0
AV DIVN DELAY/DAY (VEH-H)	0.0
AV TOTAL DELAY/DAY (VEH-H)	0.0

AVERAGE ACCIDENT NUMBERS (PIA/DAY)	
MAIN ROUTE WITHOUT WORKS	0.0062
MAIN ROUTE WITH WORKS	0.0066
DIVERSION	0.0108

PIA: Personal Injury Accidents

IMPACTS ON ROAD USERS	
ROAD USER COSTS PER DAY ( DOLLARS)	\$494
CONGESTED HOURS PER DAY*	0

\*Delays Exceeding 15 Minutes

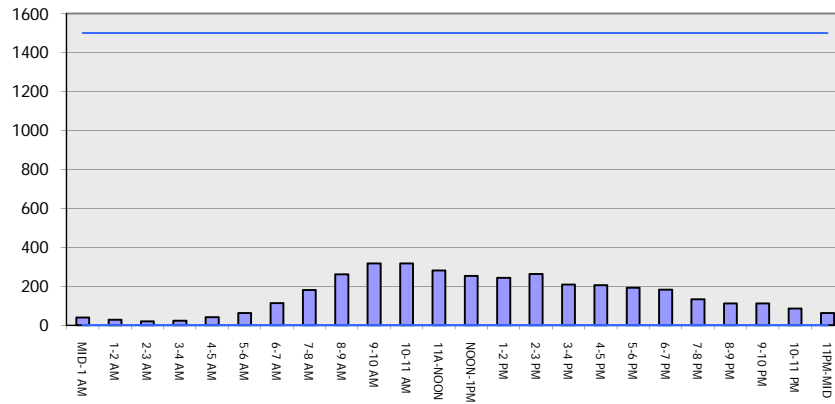
**STH 29: CTH Q TO CTH D (SHAWANO COUNTY)**  
**CONTINUOUS (24 HOUR) CLOSURE**  
**DIVERSION ROUTE: CTH Q - CTH D**

**MAY**  
 Analyzed for 2009  
 Construction Season

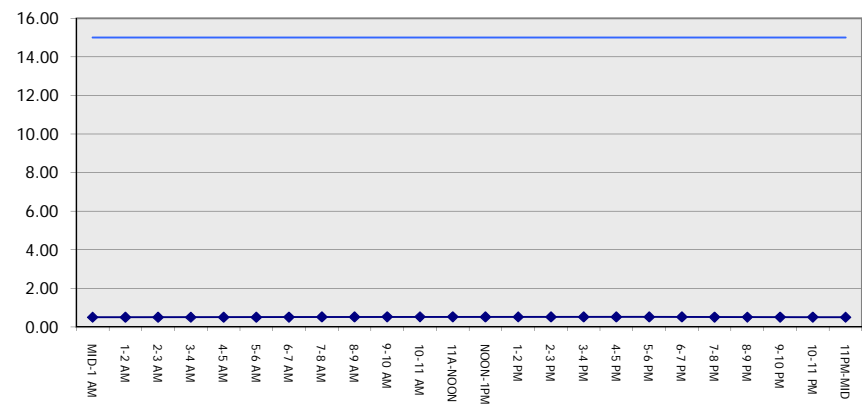
**GRAPHICAL REPRESENTATION OF TRAFFIC MODEL INPUT AND OUTPUT**

**SATURDAY WESTBOUND DIRECTION**

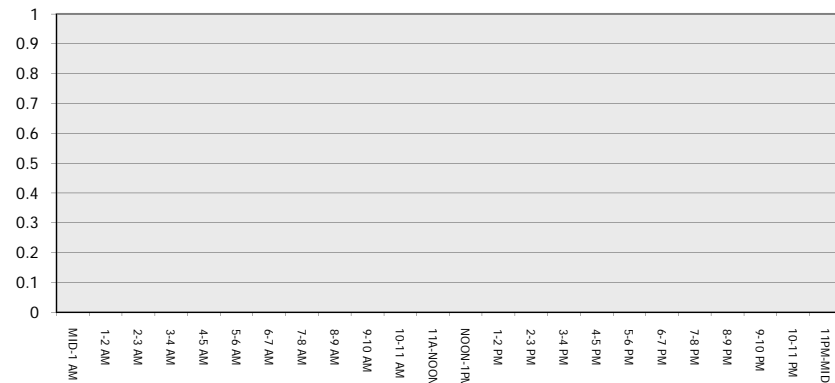
**Main Route - Traffic Demand (Vehicles Per Hour)**



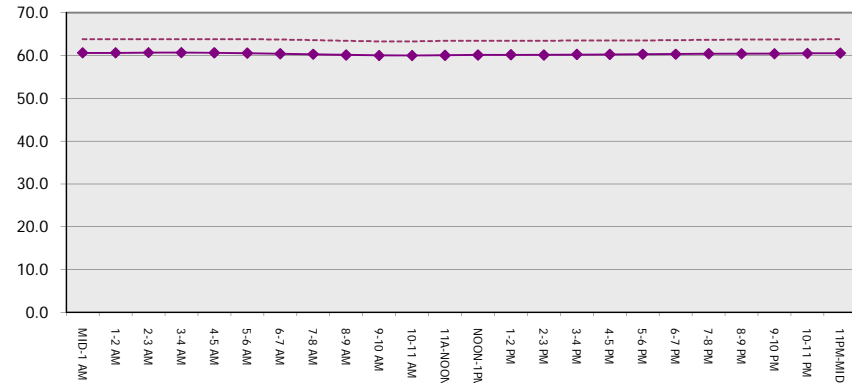
**Main Route Average Delay Per Vehicle (Minutes)**



**Main Route - Average Queue Length (Vehicles)**



**Main Route - Average Speed (MPH)**



<b>STH 29: CTH Q TO CTH D (SHAWANO COUNTY)</b> <b>CONTINUOUS (24 HOUR) CLOSURE</b> <b>DIVERSION ROUTE: CTH Q - CTH D</b>	<b>MAY</b>
	Analyzed for 2009 Construction Season

**SUMMARY OF TRAFFIC MODEL OUTPUT**

**SATURDAY EASTBOUND DIRECTION**

TIME OF DAY	FLOWS AND CAPACITY IN VEH/HR								AVERAGE SPEEDS IN MPH						
	MAIN		DIVERSION		SITE CAPA CITY	FLOW MAIN ROUTE	FLOW DIVER -TING	TOTAL DIVN FLOW	AV.DEL PER VEH (MINS)	AVERAGE QUEUE (VEH)	MAIN ROUTE		SITE	ALTERNATE ROUTE	
	DEMAND FLOW	PCT HEAVY	NORMAL FLOW	PCT HEAVY							WITHOUT WORK ZN	WITH WORK ZN		WITHOUT WORK ZN	WITH WORK ZN
MID-1 AM	37	0.0	6	0.0	1500	37	0	6	0.50	0	63.8	60.6	41.9	24.8	24.8
1-2 AM	22	0.0	3	0.0	1500	22	0	3	0.50	0	63.8	60.7	41.9	24.8	24.8
2-3 AM	17	0.0	3	0.0	1500	17	0	3	0.50	0	63.8	60.7	41.9	24.8	24.8
3-4 AM	15	0.0	2	0.0	1500	15	0	2	0.50	0	63.9	60.7	41.9	24.8	24.8
4-5 AM	23	0.0	4	0.0	1500	23	0	4	0.50	0	63.8	60.7	41.9	24.8	24.8
5-6 AM	39	0.0	6	0.0	1500	39	0	6	0.50	0	63.8	60.6	41.9	24.8	24.8
6-7 AM	81	0.0	13	0.0	1500	81	0	13	0.51	0	63.8	60.5	41.7	24.7	24.7
7-8 AM	139	0.0	22	0.0	1500	139	0	22	0.51	0	63.7	60.4	41.5	24.7	24.7
8-9 AM	209	0.0	34	0.0	1500	209	0	34	0.52	0	63.5	60.2	41.3	24.6	24.6
9-10 AM	256	0.0	41	0.0	1500	256	0	41	0.52	0	63.4	60.1	41.1	24.5	24.5
10-11 AM	307	0.0	49	0.0	1500	307	0	49	0.53	0	63.3	60.0	40.9	24.5	24.5
11A-NOON	295	0.0	47	0.0	1500	295	0	47	0.53	0	63.3	60.1	41.0	24.5	24.5
NOON-1PM	277	0.0	45	0.0	1500	277	0	45	0.52	0	63.4	60.1	41.0	24.5	24.5
1-2 PM	275	0.0	44	0.0	1500	275	0	44	0.52	0	63.4	60.1	41.0	24.5	24.5
2-3 PM	252	0.0	41	0.0	1500	252	0	41	0.52	0	63.4	60.1	41.1	24.5	24.5
3-4 PM	257	0.0	41	0.0	1500	257	0	41	0.52	0	63.4	60.1	41.1	24.5	24.5
4-5 PM	243	0.0	39	0.0	1500	243	0	39	0.52	0	63.5	60.2	41.2	24.5	24.5
5-6 PM	227	0.0	37	0.0	1500	227	0	37	0.52	0	63.5	60.2	41.2	24.5	24.5
6-7 PM	167	0.0	27	0.0	1500	167	0	27	0.51	0	63.6	60.3	41.4	24.7	24.7
7-8 PM	151	0.0	24	0.0	1500	151	0	24	0.51	0	63.6	60.4	41.5	24.7	24.7
8-9 PM	122	0.0	20	0.0	1500	122	0	20	0.51	0	63.7	60.4	41.5	24.7	24.7
9-10 PM	97	0.0	16	0.0	1500	97	0	16	0.51	0	63.7	60.5	41.7	24.7	24.7
10-11 PM	69	0.0	12	0.0	1500	69	0	12	0.51	0	63.8	60.5	41.7	24.8	24.8
11PM-MID	46	0.0	7	0.0	1500	46	0	7	0.50	0	63.8	60.6	41.9	24.8	24.8

*----- SITE BREAKDOWN DELAYS -----*	
BREAKDOWN DURATION (MINS)	0
RANGE OF QUEUE DELAY - MIN	0.0
(VEH-H) MAX	0.0
RANGE OF DIVN DELAY - MIN	0.0
(VEH-H) MAX	0.0
AV BREAKDOWNS PER DAY	0.00
AV QUEUE DELAY/DAY (VEH-H)	0.0
AV DIVN DELAY/DAY (VEH-H)	0.0
AV TOTAL DELAY/DAY (VEH-H)	0.0

*----- SITE ACCIDENT DELAYS -----*	
ACCIDENT DURATION (MINS)	0
RANGE OF QUEUE DELAY - MIN	0.0
(VEH-H) MAX	0.0
RANGE OF DIVN DELAY - MIN	0.0
(VEH-H) MAX	0.0
AV ACCIDENTS PER DAY	0.00
AV QUEUE DELAY/DAY (VEH-H)	0.0
AV DIVN DELAY/DAY (VEH-H)	0.0
AV TOTAL DELAY/DAY (VEH-H)	0.0

AVERAGE ACCIDENT NUMBERS (PIA/DAY)	
MAIN ROUTE WITHOUT WORKS	0.0060
MAIN ROUTE WITH WORKS	0.0064
DIVERSION	0.0105

PIA: Personal Injury Accidents

IMPACTS ON ROAD USERS	
ROAD USER COSTS PER DAY ( DOLLARS)	\$477
CONGESTED HOURS PER DAY*	0

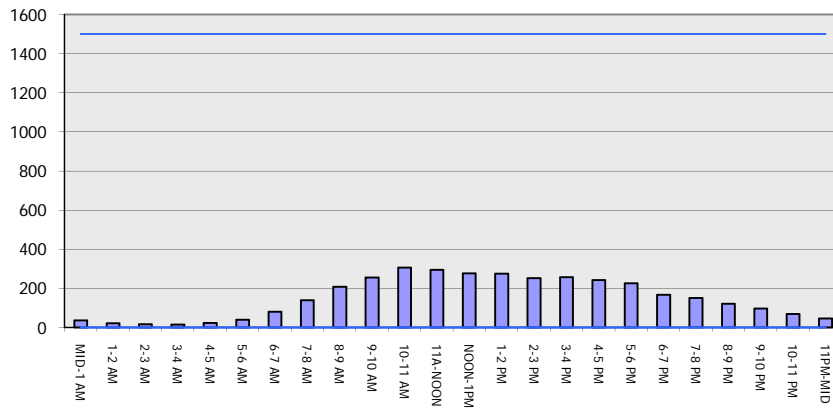
\*Delays Exceeding 15 Minutes

**STH 29: CTH Q TO CTH D (SHAWANO COUNTY)**  
**CONTINUOUS (24 HOUR) CLOSURE**  
**DIVERSION ROUTE: CTH Q - CTH D**

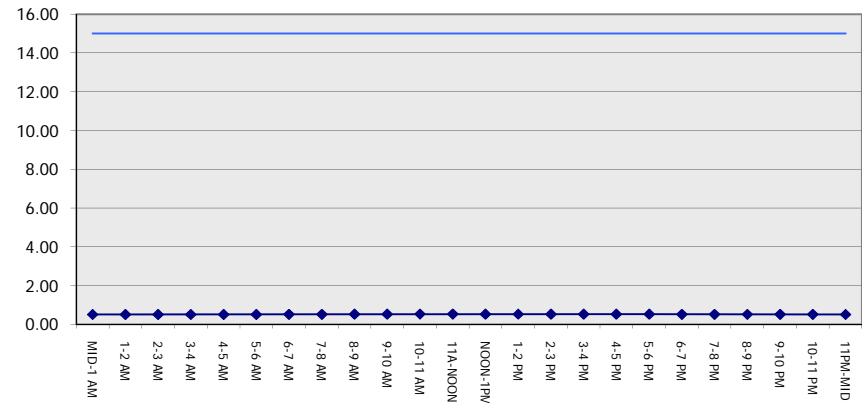
**MAY**  
 Analyzed for 2009  
 Construction Season

**GRAPHICAL REPRESENTATION OF TRAFFIC MODEL INPUT AND OUTPUT**  
**SATURDAY EASTBOUND DIRECTION**

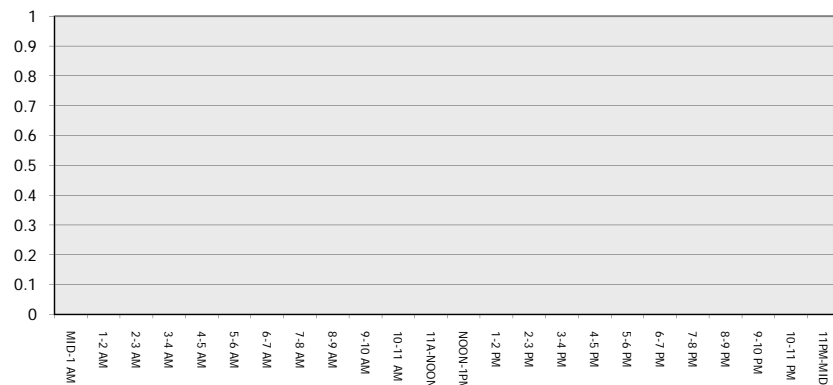
**Main Route - Traffic Demand (Vehicles Per Hour)**



**Main Route Average Delay Per Vehicle (Minutes)**



**Main Route - Average Queue Length (Vehicles)**



**Main Route - Average Speed (MPH)**

