

<b>STH 29: CTH Q TO CTH D (SHAWANO COUNTY)</b> <b>CONTINUOUS (24 HOUR) CLOSURE</b> <b>DIVERSION ROUTE: CTH Q - CTH D</b>	<b>MAY</b>
	Analyzed for 2009 Construction Season

**SUMMARY OF TRAFFIC MODEL OUTPUT**

**FRIDAY WESTBOUND DIRECTION**

TIME OF DAY	FLOWS AND CAPACITY IN VEH/HR						AVERAGE SPEEDS IN MPH								
	MAIN ROUTE		ALTERNATE ROUTE		SITE CAPA CITY	FLOW MAIN ROUTE	FLOW DIVER -TING	TOTAL DIVN FLOW	AV.DEL PER VEH (MINS)	AVERAGE QUEUE (VEH)	MAIN ROUTE		ALTERNATE ROUTE		
	DEMAND FLOW	PCT HEAVY	NORMAL FLOW	PCT HEAVY							WITHOUT WORK ZN	WITH WORK ZN	SITE	WITHOUT WORK ZN	WITH WORK ZN
MID-1 AM	27	0.0	4	0.0	1500	27	0	4	0.50	0	63.8	60.7	41.9	24.8	24.8
1-2 AM	22	0.0	3	0.0	1500	22	0	3	0.50	0	63.8	60.7	41.9	24.8	24.8
2-3 AM	27	0.0	4	0.0	1500	27	0	4	0.50	0	63.8	60.7	41.9	24.8	24.8
3-4 AM	35	0.0	5	0.0	1500	35	0	5	0.50	0	63.8	60.6	41.9	24.8	24.8
4-5 AM	51	0.0	8	0.0	1500	51	0	8	0.50	0	63.8	60.6	41.8	24.8	24.8
5-6 AM	99	0.0	16	0.0	1500	99	0	16	0.51	0	63.7	60.5	41.7	24.7	24.7
6-7 AM	158	0.0	25	0.0	1500	158	0	25	0.51	0	63.6	60.4	41.4	24.7	24.7
7-8 AM	223	0.0	36	0.0	1500	223	0	36	0.52	0	63.5	60.2	41.2	24.6	24.6
8-9 AM	277	0.0	45	0.0	1500	277	0	45	0.52	0	63.4	60.1	41.0	24.5	24.5
9-10 AM	316	0.0	51	0.0	1500	316	0	51	0.53	0	63.3	60.0	40.9	24.5	24.5
10-11 AM	336	0.0	55	0.0	1500	336	0	55	0.53	0	63.3	59.9	40.9	24.4	24.4
11A-NOON	342	0.0	55	0.0	1500	342	0	55	0.53	0	63.3	59.9	40.8	24.4	24.4
NOON-1PM	346	0.0	56	0.0	1500	346	0	56	0.53	0	63.3	59.9	40.8	24.4	24.4
1-2 PM	400	0.0	64	0.0	1500	400	0	64	0.54	0	63.2	59.8	40.6	24.3	24.3
2-3 PM	430	0.0	69	0.0	1500	430	0	69	0.54	0	63.1	59.7	40.6	24.3	24.3
3-4 PM	446	0.0	72	0.0	1500	446	0	72	0.54	0	63.1	59.7	40.5	24.3	24.3
4-5 PM	495	0.0	80	0.0	1500	495	0	80	0.55	0	63.0	59.6	40.3	24.2	24.2
5-6 PM	521	0.0	84	0.0	1500	521	0	84	0.55	0	62.9	59.6	40.2	24.2	24.2
6-7 PM	461	0.0	74	0.0	1500	461	0	74	0.54	0	63.0	59.7	40.4	24.3	24.3
7-8 PM	292	0.0	47	0.0	1500	292	0	47	0.53	0	63.3	60.1	41.0	24.5	24.5
8-9 PM	181	0.0	29	0.0	1500	181	0	29	0.52	0	63.6	60.3	41.4	24.6	24.6
9-10 PM	117	0.0	19	0.0	1500	117	0	19	0.51	0	63.7	60.4	41.6	24.7	24.7
10-11 PM	84	0.0	14	0.0	1500	84	0	14	0.51	0	63.7	60.5	41.7	24.7	24.7
11PM-MID	62	0.0	10	0.0	1500	62	0	10	0.50	0	63.8	60.5	41.8	24.8	24.8

*----- SITE BREAKDOWN DELAYS -----*	
BREAKDOWN DURATION (MINS)	0
RANGE OF QUEUE DELAY - MIN	0.0
(VEH-H) MAX	0.0
RANGE OF DIVN DELAY - MIN	0.0
(VEH-H) MAX	0.0
AV BREAKDOWNS PER DAY	0.00
AV QUEUE DELAY/DAY (VEH-H)	0.0
AV DIVN DELAY/DAY (VEH-H)	0.0
AV TOTAL DELAY/DAY (VEH-H)	0.0

*----- SITE ACCIDENT DELAYS -----*	
ACCIDENT DURATION (MINS)	0
RANGE OF QUEUE DELAY - MIN	0.0
(VEH-H) MAX	0.0
RANGE OF DIVN DELAY - MIN	0.0
(VEH-H) MAX	0.0
AV ACCIDENTS PER DAY	0.00
AV QUEUE DELAY/DAY (VEH-H)	0.0
AV DIVN DELAY/DAY (VEH-H)	0.0
AV TOTAL DELAY/DAY (VEH-H)	0.0

AVERAGE ACCIDENT NUMBERS (PIA/DAY)	
MAIN ROUTE WITHOUT WORKS	0.0096
MAIN ROUTE WITH WORKS	0.0102
DIVERSION	0.0166

PIA: Personal Injury Accidents

IMPACTS ON ROAD USERS	
ROAD USER COSTS PER DAY ( DOLLARS)	\$640
CONGESTED HOURS PER DAY*	0

\*Delays Exceeding 15 Minutes

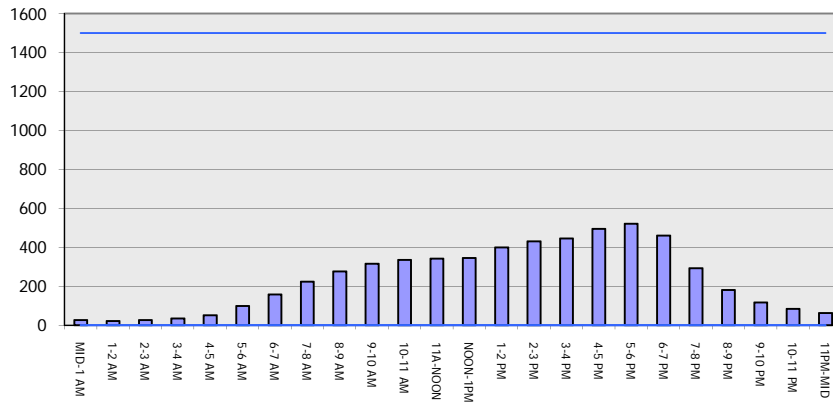
**STH 29: CTH Q TO CTH D (SHAWANO COUNTY)**  
**CONTINUOUS (24 HOUR) CLOSURE**  
**DIVERSION ROUTE: CTH Q - CTH D**

**MAY**  
 Analyzed for 2009  
 Construction Season

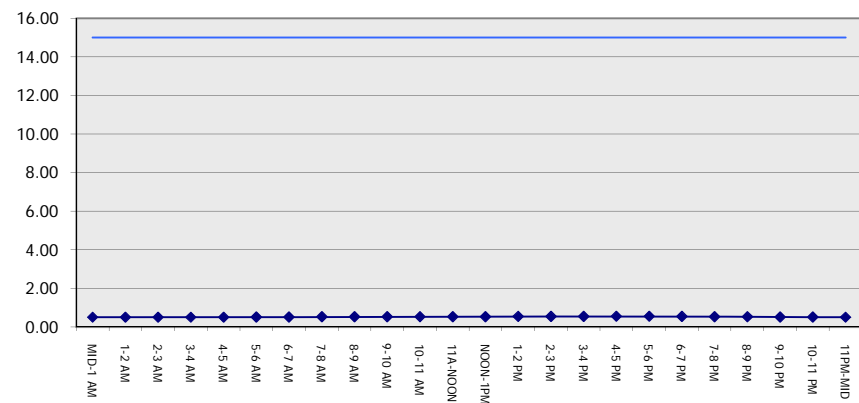
**GRAPHICAL REPRESENTATION OF TRAFFIC MODEL INPUT AND OUTPUT**

**FRIDAY WESTBOUND DIRECTION**

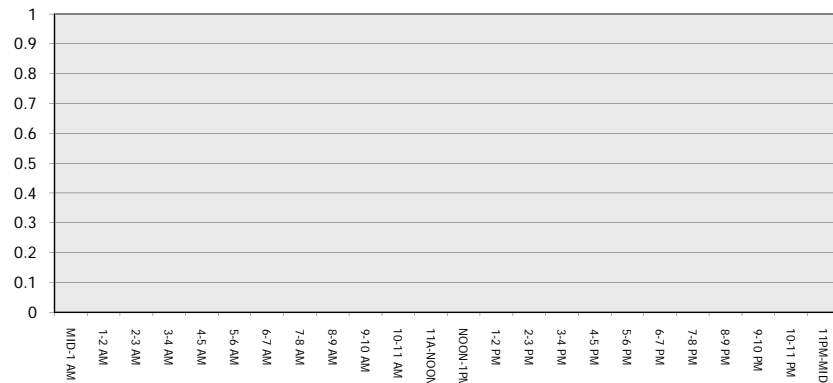
**Main Route - Traffic Demand (Vehicles Per Hour)**



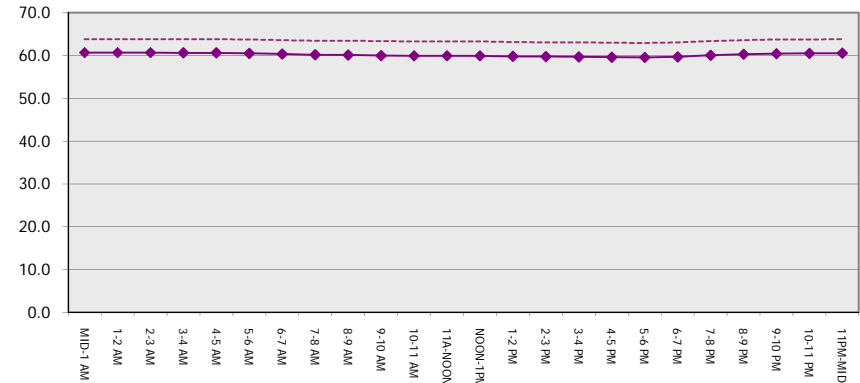
**Main Route Average Delay Per Vehicle (Minutes)**



**Main Route - Average Queue Length (Vehicles)**



**Main Route - Average Speed (MPH)**



<b>STH 29: CTH Q TO CTH D (SHAWANO COUNTY)</b> <b>CONTINUOUS (24 HOUR) CLOSURE</b> <b>DIVERSION ROUTE: CTH Q - CTH D</b>	<b>MAY</b>
	Analyzed for 2009 Construction Season

**SUMMARY OF TRAFFIC MODEL OUTPUT**

**FRIDAY EASTBOUND DIRECTION**

TIME OF DAY	FLOWS AND CAPACITY IN VEH/HR								AVERAGE SPEEDS IN MPH						
	MAIN		DIVERSION		SITE CAPA CITY	FLOW MAIN ROUTE	FLOW DIVER -TING	TOTAL DIVN FLOW	AV.DEL PER VEH (MINS)	AVERAGE QUEUE (VEH)	MAIN ROUTE		SITE	ALTERNATE ROUTE	
	DEMAND FLOW	PCT HEAVY	NORMAL FLOW	PCT HEAVY							WITHOUT WORK ZN	WITH WORK ZN		WITHOUT WORK ZN	WITH WORK ZN
MID-1 AM	31	0.0	5	0.0	1500	31	0	5	0.50	0	63.8	60.6	41.9	24.8	24.8
1-2 AM	25	0.0	4	0.0	1500	25	0	4	0.50	0	63.8	60.7	41.9	24.8	24.8
2-3 AM	25	0.0	4	0.0	1500	25	0	4	0.50	0	63.8	60.7	41.9	24.8	24.8
3-4 AM	23	0.0	4	0.0	1500	23	0	4	0.50	0	63.8	60.7	41.9	24.8	24.8
4-5 AM	42	0.0	6	0.0	1500	42	0	6	0.50	0	63.8	60.6	41.9	24.8	24.8
5-6 AM	80	0.0	13	0.0	1500	80	0	13	0.51	0	63.8	60.5	41.7	24.7	24.7
6-7 AM	127	0.0	21	0.0	1500	127	0	21	0.51	0	63.7	60.4	41.5	24.7	24.7
7-8 AM	168	0.0	27	0.0	1500	168	0	27	0.51	0	63.6	60.3	41.4	24.7	24.7
8-9 AM	196	0.0	31	0.0	1500	196	0	31	0.52	0	63.5	60.2	41.3	24.6	24.6
9-10 AM	221	0.0	36	0.0	1500	221	0	36	0.52	0	63.5	60.2	41.2	24.6	24.6
10-11 AM	255	0.0	41	0.0	1500	255	0	41	0.52	0	63.4	60.1	41.1	24.5	24.5
11A-NOON	269	0.0	43	0.0	1500	269	0	43	0.52	0	63.4	60.1	41.0	24.5	24.5
NOON-1PM	298	0.0	48	0.0	1500	298	0	48	0.53	0	63.3	60.1	41.0	24.5	24.5
1-2 PM	337	0.0	55	0.0	1500	337	0	55	0.53	0	63.3	59.9	40.9	24.4	24.4
2-3 PM	363	0.0	59	0.0	1500	363	0	59	0.53	0	63.2	59.9	40.7	24.4	24.4
3-4 PM	405	0.0	65	0.0	1500	405	0	65	0.54	0	63.2	59.8	40.6	24.3	24.3
4-5 PM	408	0.0	66	0.0	1500	408	0	66	0.54	0	63.2	59.8	40.6	24.3	24.3
5-6 PM	387	0.0	63	0.0	1500	387	0	63	0.54	0	63.2	59.9	40.7	24.3	24.3
6-7 PM	326	0.0	52	0.0	1500	326	0	52	0.53	0	63.3	60.0	40.9	24.5	24.5
7-8 PM	236	0.0	38	0.0	1500	236	0	38	0.52	0	63.5	60.2	41.2	24.5	24.5
8-9 PM	196	0.0	31	0.0	1500	196	0	31	0.52	0	63.5	60.2	41.3	24.6	24.6
9-10 PM	153	0.0	24	0.0	1500	153	0	24	0.51	0	63.6	60.4	41.5	24.7	24.7
10-11 PM	104	0.0	17	0.0	1500	104	0	17	0.51	0	63.7	60.5	41.6	24.7	24.7
11PM-MID	62	0.0	9	0.0	1500	62	0	9	0.50	0	63.8	60.5	41.8	24.8	24.8

*----- SITE BREAKDOWN DELAYS -----*	
BREAKDOWN DURATION (MINS)	0
RANGE OF QUEUE DELAY - MIN	0.0
(VEH-H) MAX	0.0
RANGE OF DIVN DELAY - MIN	0.0
(VEH-H) MAX	0.0
AV BREAKDOWNS PER DAY	0.00
AV QUEUE DELAY/DAY (VEH-H)	0.0
AV DIVN DELAY/DAY (VEH-H)	0.0
AV TOTAL DELAY/DAY (VEH-H)	0.0

*----- SITE ACCIDENT DELAYS -----*	
ACCIDENT DURATION (MINS)	0
RANGE OF QUEUE DELAY - MIN	0.0
(VEH-H) MAX	0.0
RANGE OF DIVN DELAY - MIN	0.0
(VEH-H) MAX	0.0
AV ACCIDENTS PER DAY	0.00
AV QUEUE DELAY/DAY (VEH-H)	0.0
AV DIVN DELAY/DAY (VEH-H)	0.0
AV TOTAL DELAY/DAY (VEH-H)	0.0

AVERAGE ACCIDENT NUMBERS (PIA/DAY)	
MAIN ROUTE WITHOUT WORKS	0.0079
MAIN ROUTE WITH WORKS	0.0084
DIVERSION	0.0137

PIA: Personal Injury Accidents

IMPACTS ON ROAD USERS	
ROAD USER COSTS PER DAY ( DOLLARS)	\$520
CONGESTED HOURS PER DAY*	0

\*Delays Exceeding 15 Minutes

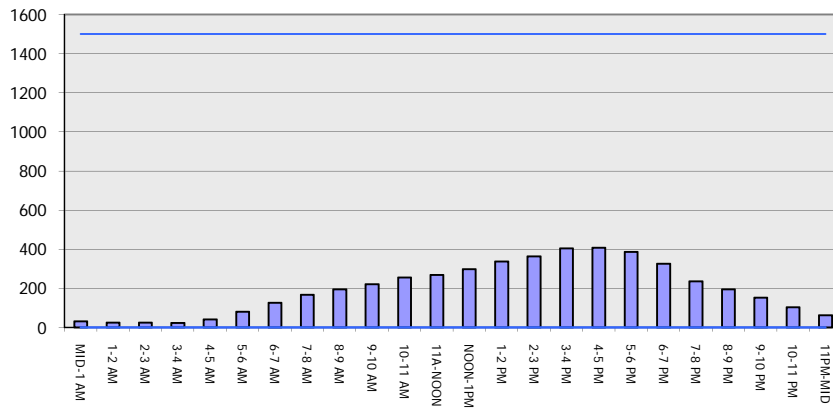
**STH 29: CTH Q TO CTH D (SHAWANO COUNTY)**  
**CONTINUOUS (24 HOUR) CLOSURE**  
**DIVERSION ROUTE: CTH Q - CTH D**

**MAY**  
 Analyzed for 2009  
 Construction Season

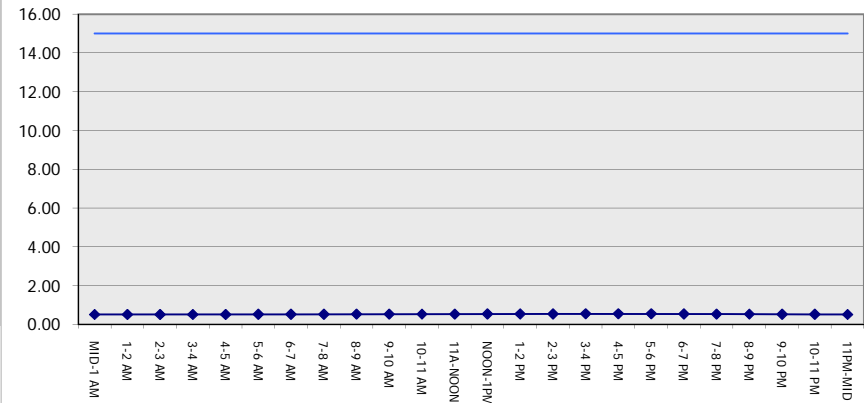
**GRAPHICAL REPRESENTATION OF TRAFFIC MODEL INPUT AND OUTPUT**

**FRIDAY EASTBOUND DIRECTION**

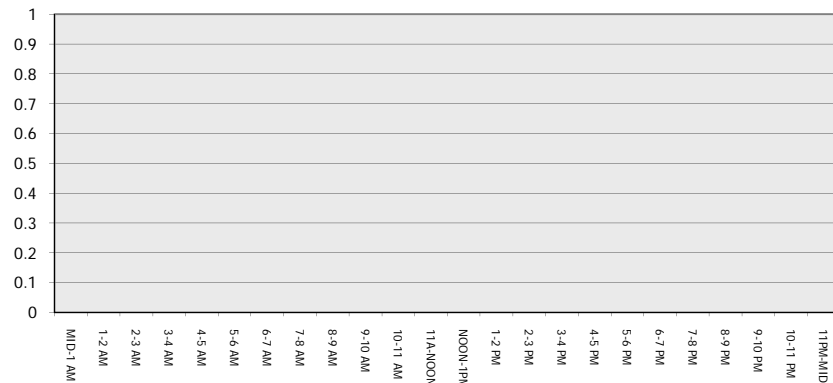
**Main Route - Traffic Demand (Vehicles Per Hour)**



**Main Route Average Delay Per Vehicle (Minutes)**



**Main Route - Average Queue Length (Vehicles)**



**Main Route - Average Speed (MPH)**

