

<b>STH 441: USH 10 TO CTH CE (OUTAGAMIE COUNTY)                  CONTINUOUS (24 HOUR) CLOSURE                  NO DIVERSION ROUTE (MAX QUEUE METHOD)</b>	<b>OCTOBER</b>
	Analyzed for 2009 Construction Season

**SUMMARY OF TRAFFIC MODEL OUTPUT**

SUNDAY SOUTHBOUND DIRECTION

TIME OF DAY	FLOWS AND CAPACITY IN VEH/HR						AVERAGE SPEEDS IN MPH			
	MAIN ROUTE		SITE CAPA CITY	FLOW		AV.DEL PER VEH (MINS)	AVERAGE QUEUE (VEH)	MAIN ROUTE		SITE
	DEMAND FLOW	PCT HEAVY		MAIN ROUTE	'DIVER TED'			WITHOUT WORK ZONE	WITH WORK ZONE	
MID-1 AM	202	0.0	1500	202	0	0.44	0	66.0	58.3	44.6
1-2 AM	128	0.0	1500	128	0	0.43	0	66.1	58.6	45.0
2-3 AM	129	0.0	1500	129	0	0.43	0	66.1	58.6	45.0
3-4 AM	78	0.0	1500	78	0	0.43	0	66.3	58.7	45.2
4-5 AM	89	0.0	1500	89	0	0.43	0	66.2	58.7	45.1
5-6 AM	160	0.0	1500	160	0	0.44	0	66.1	58.4	44.8
6-7 AM	214	0.0	1500	214	0	0.44	0	66.0	58.3	44.6
7-8 AM	271	0.0	1500	271	0	0.45	0	65.9	58.1	44.4
8-9 AM	440	0.0	1500	440	0	0.47	0	65.6	57.6	43.7
9-10 AM	643	0.0	1500	643	0	0.48	0	65.2	57.1	43.0
10-11 AM	886	0.0	1500	886	0	0.51	0	64.7	56.4	42.1
11AM-NOON	937	0.0	1500	937	0	0.51	0	64.6	56.2	41.9
NOON-1PM	1031	0.0	1500	1031	0	0.52	0	64.5	56.0	41.5
1-2 PM	891	0.0	1500	891	0	0.51	0	64.7	56.3	42.0
2-3 PM	866	0.0	1500	866	0	0.51	0	64.8	56.4	42.2
3-4 PM	886	0.0	1500	886	0	0.51	0	64.7	56.4	42.1
4-5 PM	991	0.0	1500	991	0	0.52	0	64.5	56.1	41.7
5-6 PM	926	0.0	1500	926	0	0.51	0	64.6	56.3	41.9
6-7 PM	756	0.0	1500	756	0	0.50	0	65.0	56.8	42.5
7-8 PM	535	0.0	1500	535	0	0.47	0	65.4	57.4	43.3
8-9 PM	401	0.0	1500	401	0	0.46	0	65.6	57.8	43.9
9-10 PM	333	0.0	1500	333	0	0.45	0	65.8	57.9	44.2
10-11 PM	234	0.0	1500	234	0	0.45	0	66.0	58.2	44.5
11PM-MID	107	0.0	1500	107	0	0.43	0	66.2	58.6	45.1

**\*----- SITE BREAKDOWN DELAYS -----\***

BREAKDOWN DURATION (MINS)	0
RANGE OF QUEUE DELAY - MIN (VEH-H) MAX	0.0
AV BREAKDOWNS PER DAY	0.00
AV QUEUE DELAY/DAY (VEH-H)	0.0
AV TOTAL DELAY/DAY (VEH-H)	0.0

**\*----- SITE ACCIDENT DELAYS -----\***

BREAKDOWN DURATION (MINS)	0
RANGE OF QUEUE DELAY - MIN (VEH-H) MAX	0
AV BREAKDOWNS PER DAY	0
AV QUEUE DELAY/DAY (VEH-H)	0
AV TOTAL DELAY/DAY (VEH-H)	0

**AVERAGE ACCIDENT NUMBERS (PIA/DAY)**

MAIN ROUTE WITHOUT WORKS	0.0071
MAIN ROUTE WITH WORKS	0.0063
'DIVERSION'	0.0000

PIA: Personal Injury Accidents

**IMPACTS ON ROAD USERS**

ROAD USER COSTS PER DAY	\$1,544
CONGESTED HOURS PER DAY*	0

\*Delays Exceeding User-Specified Maximum

**STH 441: USH 10 TO CTH CE (OUTAGAMIE COUNTY)  
CONTINUOUS (24 HOUR) CLOSURE  
NO DIVERSION ROUTE (MAX QUEUE METHOD)**

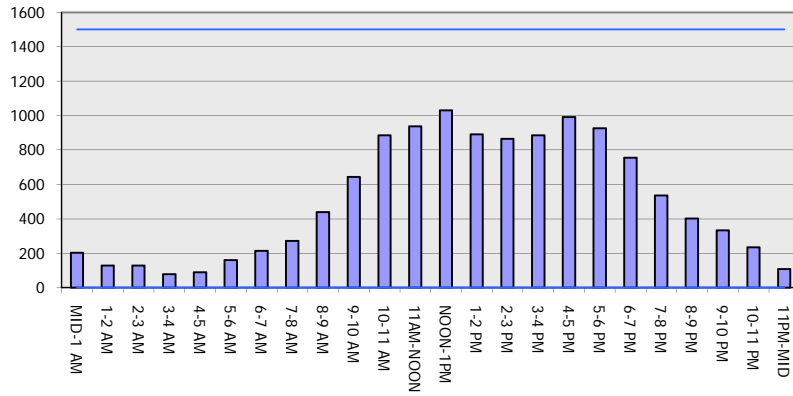
**OCTOBER**

Analyzed for 2009  
Construction Season

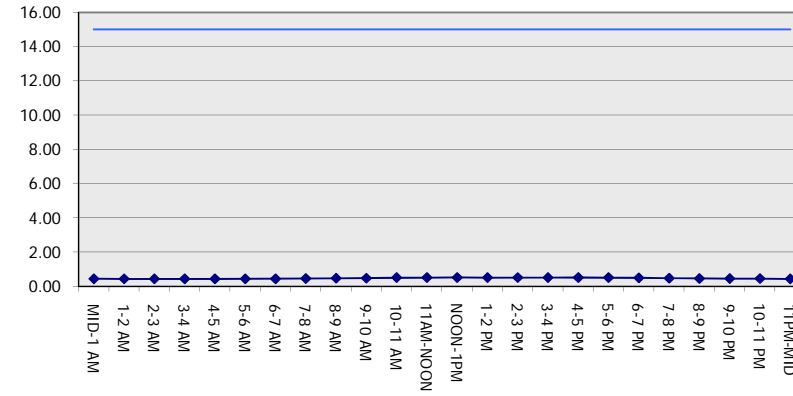
**GRAPHICAL REPRESENTATION OF TRAFFIC MODEL INPUT AND OUTPUT**

**SUNDAY SOUTHBOUND DIRECTION**

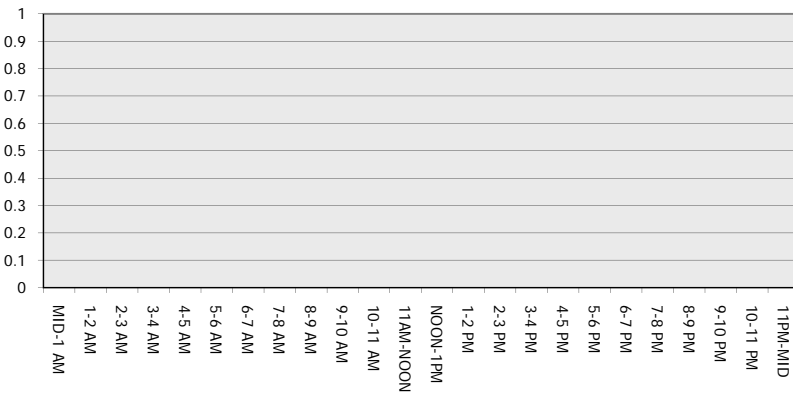
**Main Route - Traffic Demand (Vehicles Per Hour)**



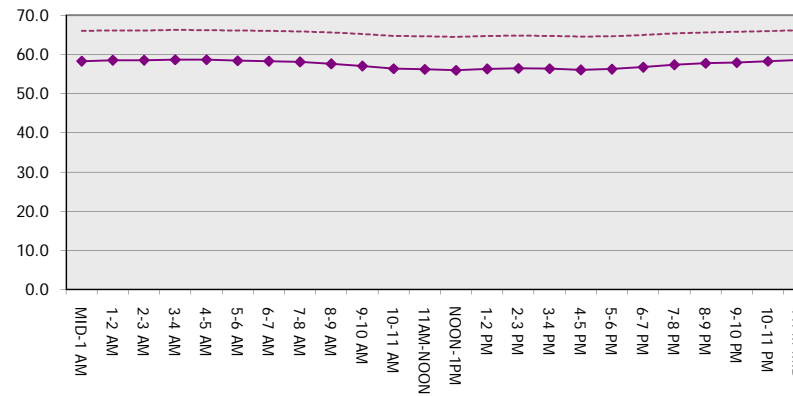
**Main Route Average Delay Per Vehicle (Minutes)**



**Main Route - Average Queue Length (Vehicles)**



**Main Route - Average Speed (MPH)**



<b>STH 441: USH 10 TO CTH CE (OUTAGAMIE COUNTY)                  CONTINUOUS (24 HOUR) CLOSURE                  NO DIVERSION ROUTE (MAX QUEUE METHOD)</b>	<b>OCTOBER</b>
	Analyzed for 2009 Construction Season

**SUMMARY OF TRAFFIC MODEL OUTPUT**

SUNDAY NORTHBOUND DIRECTION

TIME OF DAY	FLOWS AND CAPACITY IN VEH/HR							AVERAGE SPEEDS IN MPH		
	MAIN ROUTE		SITE CAPA CITY	FLOW		AV.DEL PER VEH (MINS)	AVERAGE QUEUE (VEH)	MAIN ROUTE		SITE
	DEMAND FLOW	PCT HEAVY		MAIN ROUTE	'DIVER TED'			WITHOUT WORK ZONE	WITH WORK ZONE	
MID-1 AM	265	0.0	1500	265	0	0.45	0	65.9	58.1	44.4
1-2 AM	155	0.0	1500	155	0	0.44	0	66.1	58.5	44.8
2-3 AM	167	0.0	1500	167	0	0.44	0	66.1	58.4	44.8
3-4 AM	93	0.0	1500	93	0	0.43	0	66.2	58.7	45.1
4-5 AM	76	0.0	1500	76	0	0.43	0	66.3	58.7	45.2
5-6 AM	158	0.0	1500	158	0	0.44	0	66.1	58.4	44.8
6-7 AM	251	0.0	1500	251	0	0.45	0	65.9	58.2	44.5
7-8 AM	282	0.0	1500	282	0	0.45	0	65.9	58.1	44.3
8-9 AM	496	0.0	1500	496	0	0.47	0	65.5	57.5	43.5
9-10 AM	739	0.0	1500	739	0	0.49	0	65.0	56.8	42.6
10-11 AM	935	0.0	1500	935	0	0.51	0	64.6	56.3	41.9
11AM-NOON	1141	0.0	1500	1141	0	0.56	0	64.3	55.3	40.4
NOON-1PM	1127	0.0	1500	1127	0	0.54	0	64.3	55.5	40.9
1-2 PM	1073	0.0	1500	1073	0	0.53	0	64.4	55.8	41.4
2-3 PM	1142	0.0	1500	1142	0	0.56	0	64.3	55.3	40.4
3-4 PM	1190	0.0	1500	1190	0	0.62	0	64.1	54.3	38.8
4-5 PM	1315	0.0	1500	1315	0	0.78	0	64.0	52.2	35.1
5-6 PM	1302	0.0	1500	1302	0	0.77	0	64.0	52.4	35.5
6-7 PM	1119	0.0	1500	1119	0	0.53	0	64.3	55.7	41.2
7-8 PM	910	0.0	1500	910	0	0.51	0	64.7	56.3	42.0
8-9 PM	634	0.0	1500	634	0	0.48	0	65.2	57.1	43.0
9-10 PM	468	0.0	1500	468	0	0.47	0	65.5	57.6	43.7
10-11 PM	358	0.0	1500	358	0	0.46	0	65.7	57.9	44.0
11PM-MID	194	0.0	1500	194	0	0.44	0	66.0	58.4	44.7

*----- SITE BREAKDOWN DELAYS -----*	
BREAKDOWN DURATION (MINS)	0
RANGE OF QUEUE DELAY - MIN (VEH-H) MAX	0.0
AV BREAKDOWNS PER DAY	0.00
AV QUEUE DELAY/DAY (VEH-H)	0.0
AV TOTAL DELAY/DAY (VEH-H)	0.0

*----- SITE ACCIDENT DELAYS -----*	
BREAKDOWN DURATION (MINS)	0
RANGE OF QUEUE DELAY - MIN (VEH-H) MAX	0
AV BREAKDOWNS PER DAY	0
AV QUEUE DELAY/DAY (VEH-H)	0
AV TOTAL DELAY/DAY (VEH-H)	0

AVERAGE ACCIDENT NUMBERS (PIA/DAY)	
MAIN ROUTE WITHOUT WORKS	0.0092
MAIN ROUTE WITH WORKS	0.0081
'DIVERSION'	0.0000

PIA: Personal Injury Accidents

ECONOMIC IMPACT ON ROAD USERS	
ROAD USER COSTS PER DAY	\$2,260
CONGESTED HOURS PER DAY*	0

\*Delays Exceeding User-Specified Maximum

**STH 441: USH 10 TO CTH CE (OUTAGAMIE COUNTY)  
CONTINUOUS (24 HOUR) CLOSURE  
NO DIVERSION ROUTE (MAX QUEUE METHOD)**

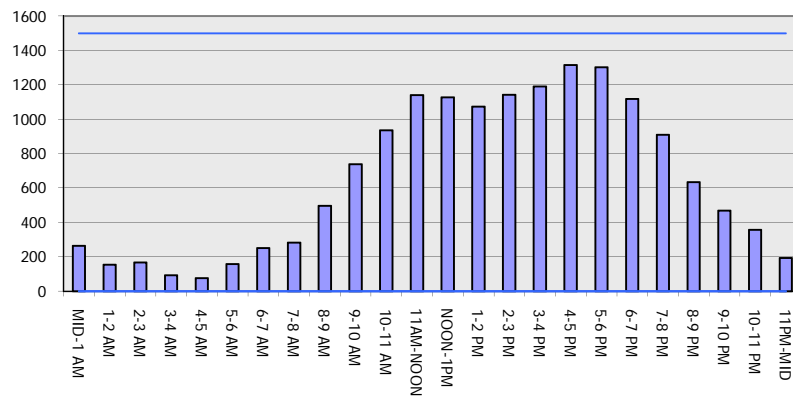
**OCTOBER**

Analyzed for 2009  
Construction Season

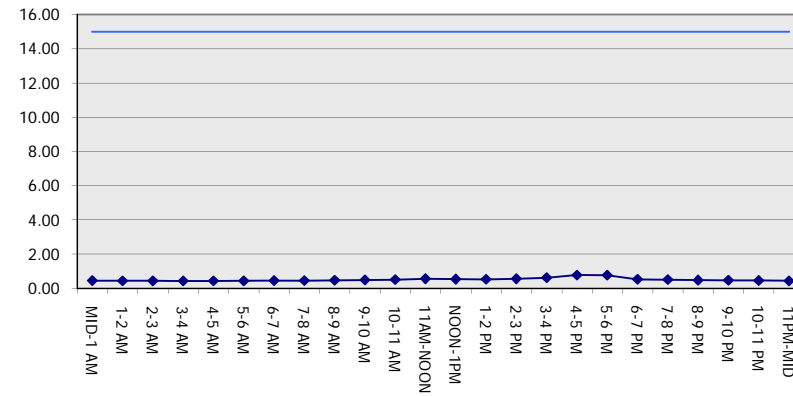
**GRAPHICAL REPRESENTATION OF TRAFFIC MODEL INPUT AND OUTPUT**

**SUNDAY NORTHBOUND DIRECTION**

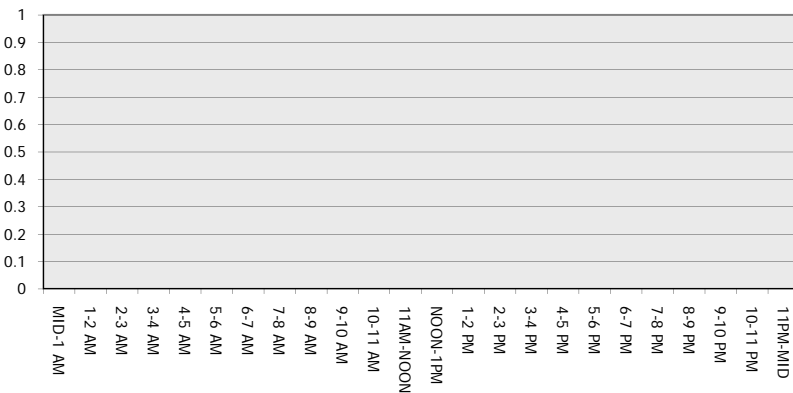
**Main Route - Traffic Demand (Vehicles Per Hour)**



**Main Route Average Delay Per Vehicle (Minutes)**



**Main Route - Average Queue Length (Vehicles)**



**Main Route - Average Speed (MPH)**

