

STH 441: USH 10 TO CTH CE (OUTAGAMIE COUNTY) CONTINUOUS (24 HOUR) CLOSURE NO DIVERSION ROUTE (MAX QUEUE METHOD)	OCTOBER
	Analyzed for 2009 Construction Season

SUMMARY OF TRAFFIC MODEL OUTPUT

SATURDAY SOUTHBOUND DIRECTION

TIME OF DAY	FLOWS AND CAPACITY IN VEH/HR							AVERAGE SPEEDS IN MPH			
	MAIN ROUTE		SITE CAPA CITY	FLOW		AV.DEL PER VEH (MINS)	AVERAGE QUEUE (VEH)	MAIN ROUTE		SITE	
	DEMAND FLOW	PCT HEAVY		MAIN ROUTE	'DIVER TED'			WITHOUT WORK ZONE	WITH WORK ZONE		
MID-1 AM	191	0.0	1500	191	0	0.44	0	66.0	58.4	44.7	
1-2 AM	124	0.0	1500	124	0	0.43	0	66.1	58.6	45.0	
2-3 AM	111	0.0	1500	111	0	0.43	0	66.2	58.6	45.0	
3-4 AM	83	0.0	1500	83	0	0.43	0	66.2	58.7	45.1	
4-5 AM	151	0.0	1500	151	0	0.44	0	66.1	58.5	44.9	
5-6 AM	285	0.0	1500	285	0	0.45	0	65.8	58.1	44.3	
6-7 AM	425	0.0	1500	425	0	0.46	0	65.6	57.7	43.8	
7-8 AM	679	0.0	1500	679	0	0.49	0	65.1	56.9	42.8	
8-9 AM	862	0.0	1500	862	0	0.51	0	64.8	56.4	42.2	
9-10 AM	936	0.0	1500	936	0	0.51	0	64.6	56.3	41.9	
10-11 AM	1112	0.0	1500	1112	0	0.53	0	64.3	55.8	41.3	
11AM-NOON	1103	0.0	1500	1103	0	0.53	0	64.3	55.8	41.3	
NOON-1PM	1168	0.0	1500	1168	0	0.60	0	64.2	54.8	39.5	
1-2 PM	1117	0.0	1500	1117	0	0.53	0	64.3	55.7	41.3	
2-3 PM	1079	0.0	1500	1079	0	0.53	0	64.4	55.8	41.4	
3-4 PM	1018	0.0	1500	1018	0	0.52	0	64.5	56.0	41.6	
4-5 PM	925	0.0	1500	925	0	0.51	0	64.6	56.3	41.9	
5-6 PM	925	0.0	1500	925	0	0.51	0	64.6	56.3	41.9	
6-7 PM	838	0.0	1500	838	0	0.50	0	64.8	56.5	42.2	
7-8 PM	623	0.0	1500	623	0	0.48	0	65.2	57.1	43.0	
8-9 PM	535	0.0	1500	535	0	0.47	0	65.4	57.4	43.3	
9-10 PM	458	0.0	1500	458	0	0.47	0	65.5	57.6	43.7	
10-11 PM	377	0.0	1500	377	0	0.46	0	65.7	57.8	44.0	
11PM-MID	260	0.0	1500	260	0	0.45	0	65.9	58.2	44.5	

----- SITE BREAKDOWN DELAYS -----

BREAKDOWN DURATION (MINS)	0
RANGE OF QUEUE DELAY - MIN (VEH-H) MAX	0.0
AV BREAKDOWNS PER DAY	0.00
AV QUEUE DELAY/DAY (VEH-H)	0.0
AV TOTAL DELAY/DAY (VEH-H)	0.0

----- SITE ACCIDENT DELAYS -----

BREAKDOWN DURATION (MINS)	0
RANGE OF QUEUE DELAY - MIN (VEH-H) MAX	0
AV BREAKDOWNS PER DAY	0
AV QUEUE DELAY/DAY (VEH-H)	0
AV TOTAL DELAY/DAY (VEH-H)	0

AVERAGE ACCIDENT NUMBERS (PIA/DAY)

MAIN ROUTE WITHOUT WORKS	0.0091
MAIN ROUTE WITH WORKS	0.0080
'DIVERSION'	0.0000

PIA: Personal Injury Accidents

IMPACTS ON ROAD USERS

ROAD USER COSTS PER DAY	\$2,017
CONGESTED HOURS PER DAY*	0

*Delays Exceeding User-Specified Maximum

**STH 441: USH 10 TO CTH CE (OUTAGAMIE COUNTY)
CONTINUOUS (24 HOUR) CLOSURE
NO DIVERSION ROUTE (MAX QUEUE METHOD)**

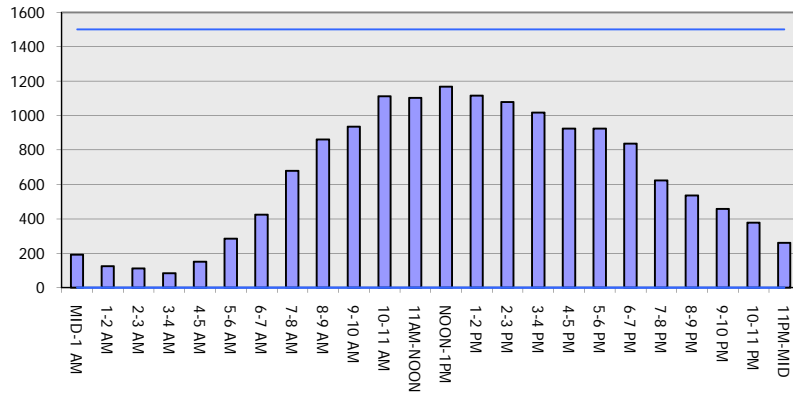
OCTOBER

Analyzed for 2009
Construction Season

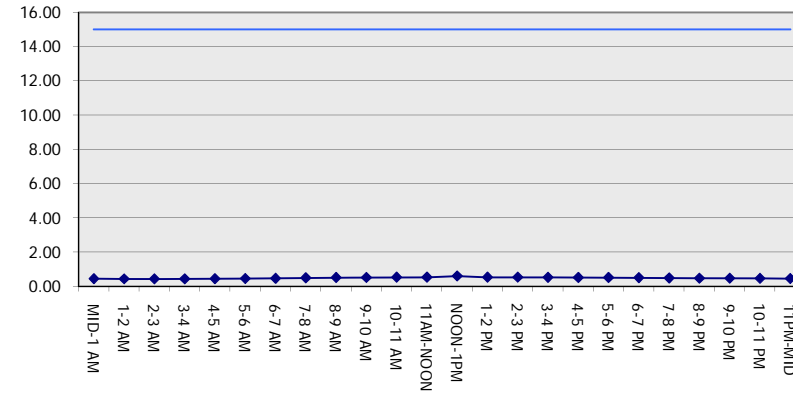
GRAPHICAL REPRESENTATION OF TRAFFIC MODEL INPUT AND OUTPUT

SATURDAY SOUTHBOUND DIRECTION

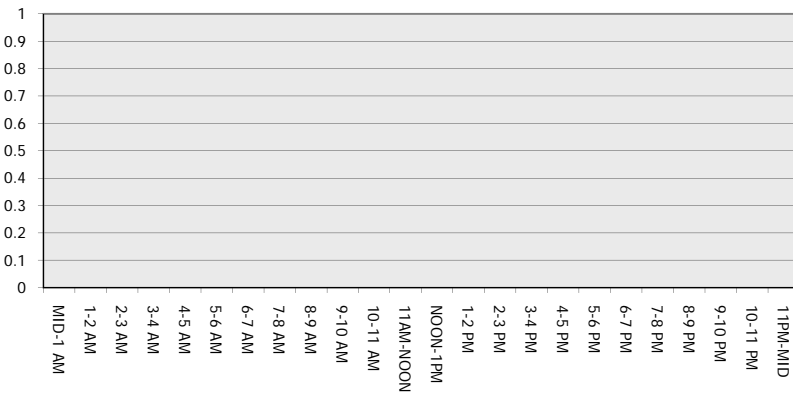
Main Route - Traffic Demand (Vehicles Per Hour)



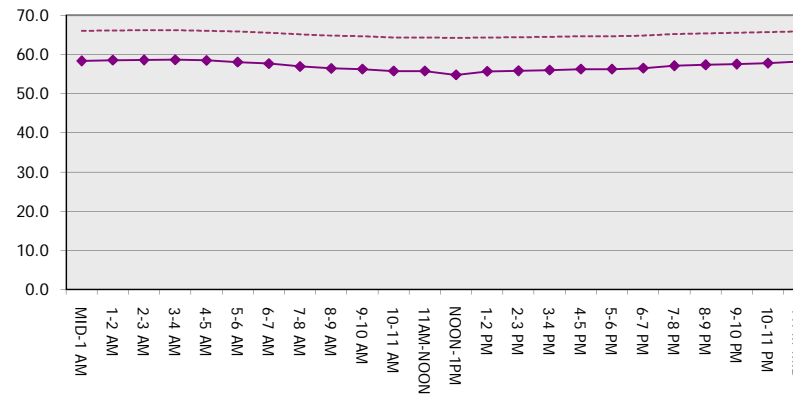
Main Route Average Delay Per Vehicle (Minutes)



Main Route - Average Queue Length (Vehicles)



Main Route - Average Speed (MPH)



STH 441: USH 10 TO CTH CE (OUTAGAMIE COUNTY) CONTINUOUS (24 HOUR) CLOSURE NO DIVERSION ROUTE (MAX QUEUE METHOD)	OCTOBER
	Analyzed for 2009 Construction Season

SUMMARY OF TRAFFIC MODEL OUTPUT

SATURDAY NORTHBOUND DIRECTION

TIME OF DAY	FLOWS AND CAPACITY IN VEH/HR							AVERAGE SPEEDS IN MPH		
	MAIN ROUTE		SITE CAPA CITY	FLOW		AV.DEL PER VEH (MINS)	AVERAGE QUEUE (VEH)	MAIN ROUTE		SITE
	DEMAND FLOW	PCT HEAVY		MAIN ROUTE	'DIVER TED'			WITHOUT WORK ZONE	WITH WORK ZONE	
MID-1 AM	284	0.0	1500	284	0	0.45	0	65.8	58.1	44.3
1-2 AM	182	0.0	1500	182	0	0.44	0	66.1	58.4	44.8
2-3 AM	147	0.0	1500	147	0	0.44	0	66.1	58.5	44.9
3-4 AM	89	0.0	1500	89	0	0.43	0	66.2	58.7	45.1
4-5 AM	102	0.0	1500	102	0	0.43	0	66.2	58.6	45.1
5-6 AM	207	0.0	1500	207	0	0.44	0	66.0	58.3	44.6
6-7 AM	389	0.0	1500	389	0	0.46	0	65.6	57.8	43.9
7-8 AM	478	0.0	1500	478	0	0.47	0	65.5	57.5	43.6
8-9 AM	734	0.0	1500	734	0	0.49	0	65.0	56.8	42.6
9-10 AM	909	0.0	1500	909	0	0.51	0	64.7	56.3	42.0
10-11 AM	1129	0.0	1500	1129	0	0.55	0	64.3	55.5	40.9
11AM-NOON	1193	0.0	1500	1193	0	0.63	0	64.1	54.3	38.7
NOON-1PM	1361	0.0	1500	1361	0	0.84	0	63.8	51.4	33.9
1-2 PM	1297	0.0	1500	1297	0	0.76	0	64.0	52.4	35.6
2-3 PM	1360	0.0	1500	1360	0	0.84	0	63.8	51.4	34.0
3-4 PM	1368	0.0	1500	1368	0	0.85	0	63.8	51.2	33.7
4-5 PM	1384	0.0	1500	1384	0	0.87	0	63.8	51.0	33.3
5-6 PM	1340	0.0	1500	1340	0	0.82	0	63.9	51.7	34.5
6-7 PM	1209	0.0	1500	1209	0	0.65	0	64.1	54.0	38.2
7-8 PM	944	0.0	1500	944	0	0.51	0	64.6	56.2	41.9
8-9 PM	803	0.0	1500	803	0	0.50	0	64.9	56.6	42.4
9-10 PM	744	0.0	1500	744	0	0.49	0	65.0	56.8	42.6
10-11 PM	568	0.0	1500	568	0	0.48	0	65.3	57.3	43.2
11PM-MID	377	0.0	1500	377	0	0.46	0	65.7	57.8	44.0

----- SITE BREAKDOWN DELAYS -----	
BREAKDOWN DURATION (MINS)	0
RANGE OF QUEUE DELAY - MIN (VEH-H) MAX	0.0
AV BREAKDOWNS PER DAY	0.00
AV QUEUE DELAY/DAY (VEH-H)	0.0
AV TOTAL DELAY/DAY (VEH-H)	0.0

----- SITE ACCIDENT DELAYS -----	
BREAKDOWN DURATION (MINS)	0
RANGE OF QUEUE DELAY - MIN (VEH-H) MAX	0
AV BREAKDOWNS PER DAY	0
AV QUEUE DELAY/DAY (VEH-H)	0
AV TOTAL DELAY/DAY (VEH-H)	0

AVERAGE ACCIDENT NUMBERS (PIA/DAY)	
MAIN ROUTE WITHOUT WORKS	0.0109
MAIN ROUTE WITH WORKS	0.0097
'DIVERSION'	0.0000

PIA: Personal Injury Accidents

ECONOMIC IMPACT ON ROAD USERS	
ROAD USER COSTS PER DAY	\$3,151
CONGESTED HOURS PER DAY*	0

*Delays Exceeding User-Specified Maximum

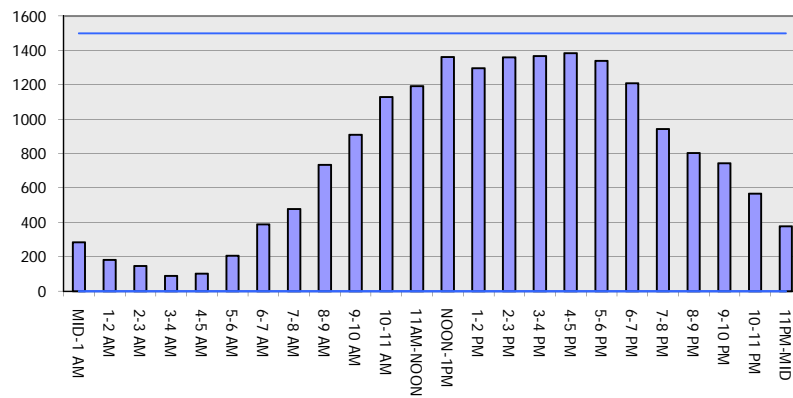
**STH 441: USH 10 TO CTH CE (OUTAGAMIE COUNTY)
 CONTINUOUS (24 HOUR) CLOSURE
 NO DIVERSION ROUTE (MAX QUEUE METHOD)**

OCTOBER

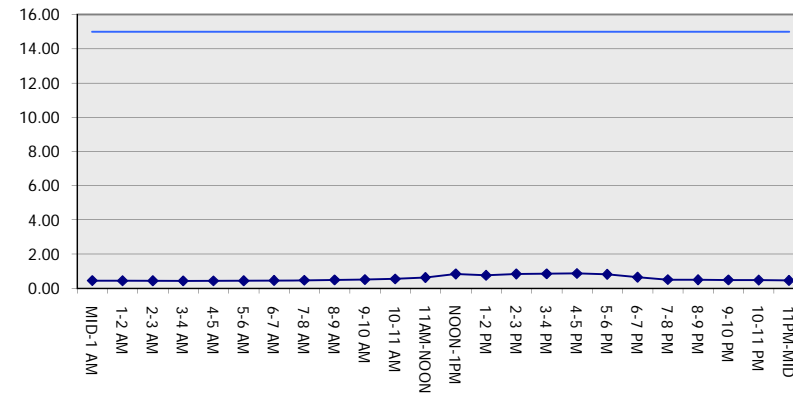
Analyzed for 2009
 Construction Season

GRAPHICAL REPRESENTATION OF TRAFFIC MODEL INPUT AND OUTPUT
SATURDAY NORTHBOUND DIRECTION

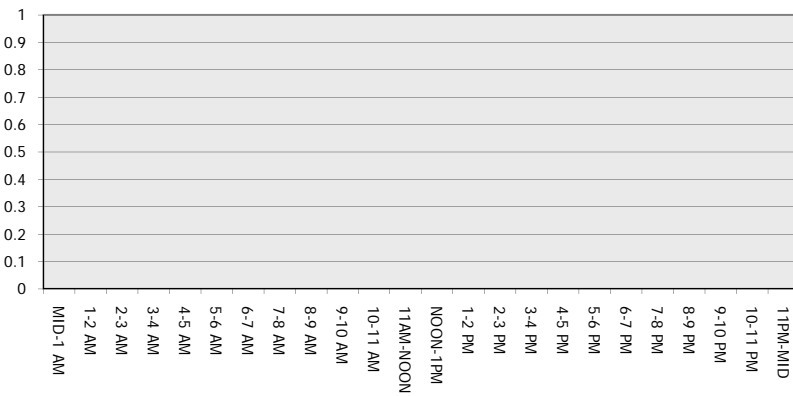
Main Route - Traffic Demand (Vehicles Per Hour)



Main Route Average Delay Per Vehicle (Minutes)



Main Route - Average Queue Length (Vehicles)



Main Route - Average Speed (MPH)

