

<b>STH 441: USH 10 TO CTH CE (OUTAGAMIE COUNTY)                  CONTINUOUS (24 HOUR) CLOSURE                  NO DIVERSION ROUTE (MAX QUEUE METHOD)</b>	<b>OCTOBER</b>
	Analyzed for 2009 Construction Season

**SUMMARY OF TRAFFIC MODEL OUTPUT**

MON-THUR                  SOUTHBOUND DIRECTION

TIME OF DAY	FLOWS AND CAPACITY IN VEH/HR						AVERAGE SPEEDS IN MPH				
	MAIN ROUTE		SITE CAPA CITY	FLOW		AV.DEL PER VEH (MINS)	AVERAGE QUEUE (VEH)	MAIN ROUTE		SITE	
	DEMAND FLOW	PCT HEAVY		MAIN ROUTE	'DIVER TED'			WITHOUT WORK ZONE	WITH WORK ZONE		
MID-1 AM	79	0.0	1500	79	0	0.43	0	66.3	58.7	45.1	
1-2 AM	64	0.0	1500	64	0	0.43	0	66.3	58.7	45.2	
2-3 AM	58	0.0	1500	58	0	0.43	0	66.3	58.7	45.3	
3-4 AM	84	0.0	1500	84	0	0.43	0	66.2	58.7	45.1	
4-5 AM	259	0.0	1500	259	0	0.45	0	65.9	58.2	44.5	
5-6 AM	820	0.0	1500	820	0	0.50	0	64.8	56.6	42.3	
6-7 AM	1526	0.0	1499	1526	0	1.66	25	63.5	43.0	32.5	
7-8 AM	2272	0.0	1500	1832	440	<b>13.15+</b>	344	62.2	13.3	31.4	
8-9 AM	1443	0.0	1499	1344	99	<b>14.32+</b>	361	63.7	12.5	30.8	
9-10 AM	1010	0.0	1499	1010	0	2.47	88	64.5	37.6	38.8	
10-11 AM	983	0.0	1500	983	0	0.52	0	64.6	56.1	41.7	
11AM-NOON	1055	0.0	1500	1055	0	0.52	0	64.4	55.9	41.5	
NOON-1PM	1129	0.0	1500	1129	0	0.55	0	64.3	55.5	40.9	
1-2 PM	1230	0.0	1500	1230	0	0.68	0	64.1	53.6	37.5	
2-3 PM	1273	0.0	1499	1273	0	0.73	0	64.0	52.8	36.3	
3-4 PM	1496	0.0	1499	1496	0	1.19	5	63.6	47.4	31.4	
4-5 PM	1684	0.0	1500	1684	0	4.80	111	63.2	26.7	30.8	
5-6 PM	1613	0.0	1499	1613	0	<b>11.42</b>	283	63.4	14.8	30.8	
6-7 PM	1068	0.0	1499	1068	0	4.06	145	64.4	29.6	36.6	
7-8 PM	666	0.0	1500	666	0	0.49	0	65.1	57.0	42.9	
8-9 PM	548	0.0	1500	548	0	0.48	0	65.4	57.3	43.3	
9-10 PM	529	0.0	1500	529	0	0.47	0	65.4	57.4	43.4	
10-11 PM	348	0.0	1500	348	0	0.46	0	65.8	57.9	44.1	
11PM-MID	183	0.0	1500	183	0	0.44	0	66.1	58.4	44.8	

+ INDICATES QUEUEING EXCEEDS USER-SPECIFIED MAXIMUM LIMIT

*----- SITE BREAKDOWN DELAYS -----*	
BREAKDOWN DURATION (MINS)	0
RANGE OF QUEUE DELAY - MIN (VEH-H) MAX	0.0
AV BREAKDOWNS PER DAY	0.00
AV QUEUE DELAY/DAY (VEH-H)	0.0
AV TOTAL DELAY/DAY (VEH-H)	0.0

*----- SITE ACCIDENT DELAYS -----*	
BREAKDOWN DURATION (MINS)	0
RANGE OF QUEUE DELAY - MIN (VEH-H) MAX	0
AV BREAKDOWNS PER DAY	0
AV QUEUE DELAY/DAY (VEH-H)	0
AV TOTAL DELAY/DAY (VEH-H)	0

AVERAGE ACCIDENT NUMBERS (PIA/DAY)	
MAIN ROUTE WITHOUT WORKS	0.0126
MAIN ROUTE WITH WORKS	0.0109
'DIVERSION'	0.0007
PIA: Personal Injury Accidents	
IMPACTS ON ROAD USERS	
ROAD USER COSTS PER DAY	\$20,504
CONGESTED HOURS PER DAY*	2

\*Delays Exceeding User-Specified Maximum

**STH 441: USH 10 TO CTH CE (OUTAGAMIE COUNTY)  
CONTINUOUS (24 HOUR) CLOSURE  
NO DIVERSION ROUTE (MAX QUEUE METHOD)**

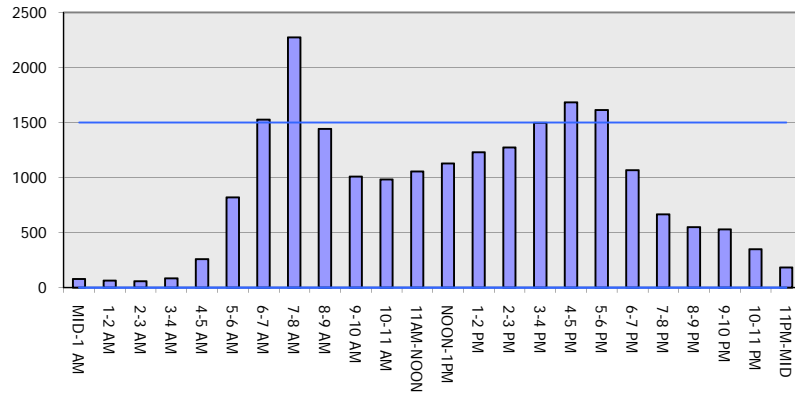
**OCTOBER**

Analyzed for 2009  
Construction Season

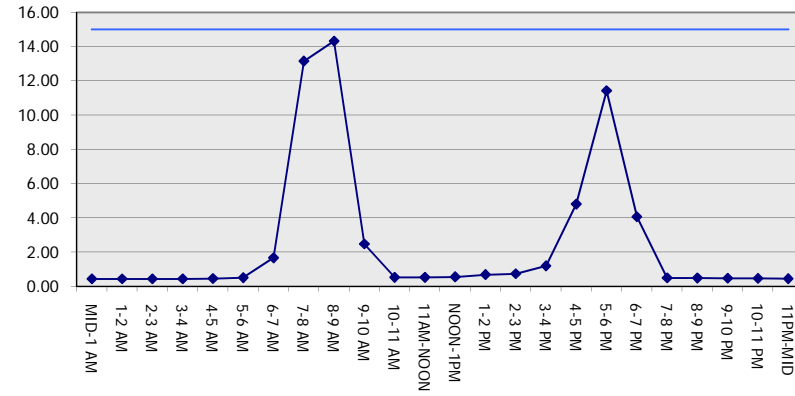
**GRAPHICAL REPRESENTATION OF TRAFFIC MODEL INPUT AND OUTPUT**

**MON-THUR SOUTHBOUND DIRECTION**

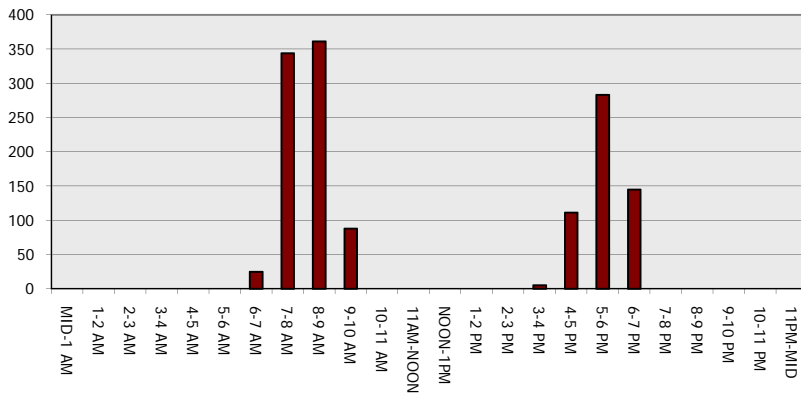
**Main Route - Traffic Demand (Vehicles Per Hour)**



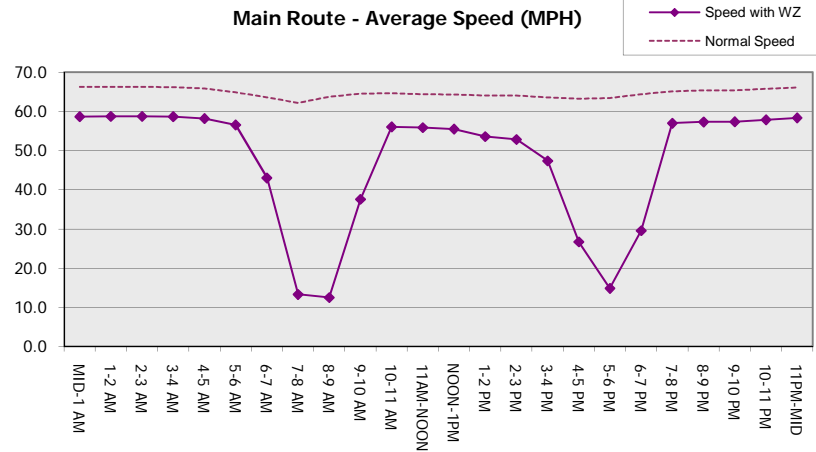
**Main Route Average Delay Per Vehicle (Minutes)**



**Main Route - Average Queue Length (Vehicles)**



**Main Route - Average Speed (MPH)**



<b>STH 441: USH 10 TO CTH CE (OUTAGAMIE COUNTY)                  CONTINUOUS (24 HOUR) CLOSURE                  NO DIVERSION ROUTE (MAX QUEUE METHOD)</b>	<b>OCTOBER</b>
	Analyzed for 2009 Construction Season

**SUMMARY OF TRAFFIC MODEL OUTPUT**

MON-THUR                      NORTHBOUND DIRECTION

TIME OF DAY	FLOWS AND CAPACITY IN VEH/HR							AVERAGE SPEEDS IN MPH		
	MAIN ROUTE		SITE CAPA CITY	FLOW		AV.DEL PER VEH (MINS)	AVERAGE QUEUE (VEH)	MAIN ROUTE		SITE
	DEMAND FLOW	PCT HEAVY		MAIN ROUTE	'DIVER TED'			WITHOUT WORK ZONE	WITH WORK ZONE	
MID-1 AM	188	0.0	1500	188	0	0.44	0	66.0	58.4	44.7
1-2 AM	126	0.0	1500	126	0	0.43	0	66.1	58.6	45.0
2-3 AM	109	0.0	1500	109	0	0.43	0	66.2	58.6	45.0
3-4 AM	59	0.0	1500	59	0	0.43	0	66.3	58.7	45.3
4-5 AM	126	0.0	1500	126	0	0.43	0	66.1	58.6	45.0
5-6 AM	448	0.0	1500	448	0	0.47	0	65.6	57.6	43.7
6-7 AM	1185	0.0	1499	1185	0	0.68	0	64.1	53.7	37.7
7-8 AM	1915	0.0	1499	1915	0	7.19	201	62.8	20.7	30.8
8-9 AM	1366	0.0	1499	1344	22	14.07+	355	63.8	12.7	30.8
9-10 AM	1068	0.0	1499	1068	0	2.43	83	64.4	37.8	38.3
10-11 AM	1108	0.0	1500	1108	0	0.53	0	64.3	55.8	41.3
11AM-NOON	1210	0.0	1500	1210	0	0.65	0	64.1	54.0	38.1
NOON-1PM	1319	0.0	1500	1319	0	0.79	0	63.9	52.0	35.0
1-2 PM	1346	0.0	1499	1346	0	0.82	0	63.9	51.6	34.3
2-3 PM	1797	0.0	1499	1797	0	4.61	121	63.0	27.3	30.8
3-4 PM	2227	0.0	1499	1583	643	15.45+	391	62.2	11.7	30.8
4-5 PM	2695	0.0	1500	1500	1195	15.57+	400	58.9	11.5	30.8
5-6 PM	2376	0.0	1500	1500	876	15.76+	400	62.0	11.5	30.8
6-7 PM	1537	0.0	1500	1430	107	14.77+	372	63.5	12.1	30.8
7-8 PM	955	0.0	1499	955	0	2.70	104	64.6	36.1	38.8
8-9 PM	807	0.0	1500	807	0	0.50	0	64.9	56.6	42.4
9-10 PM	645	0.0	1500	645	0	0.48	0	65.2	57.1	43.0
10-11 PM	529	0.0	1500	529	0	0.47	0	65.4	57.4	43.4
11PM-MID	325	0.0	1500	325	0	0.45	0	65.8	57.9	44.2

+ INDICATES QUEUEING EXCEEDS USER-SPECIFIED MAXIMUM LIMIT

*----- SITE BREAKDOWN DELAYS -----*	
BREAKDOWN DURATION (MINS)	0
RANGE OF QUEUE DELAY - MIN (VEH-H) MAX	0.0
AV BREAKDOWNS PER DAY	0.00
AV QUEUE DELAY/DAY (VEH-H)	0.0
AV TOTAL DELAY/DAY (VEH-H)	0.0

*----- SITE ACCIDENT DELAYS -----*	
BREAKDOWN DURATION (MINS)	0
RANGE OF QUEUE DELAY - MIN (VEH-H) MAX	0
AV BREAKDOWNS PER DAY	0
AV QUEUE DELAY/DAY (VEH-H)	0
AV TOTAL DELAY/DAY (VEH-H)	0

AVERAGE ACCIDENT NUMBERS (PIA/DAY)	
MAIN ROUTE WITHOUT WORKS	0.0150
MAIN ROUTE WITH WORKS	0.0118
'DIVERSION'	0.0039

PIA: Personal Injury Accidents

ECONOMIC IMPACT ON ROAD USERS	
ROAD USER COSTS PER DAY	\$41,479
CONGESTED HOURS PER DAY*	5

\*Delays Exceeding User-Specified Maximum

**STH 441: USH 10 TO CTH CE (OUTAGAMIE COUNTY)  
CONTINUOUS (24 HOUR) CLOSURE  
NO DIVERSION ROUTE (MAX QUEUE METHOD)**

**OCTOBER**

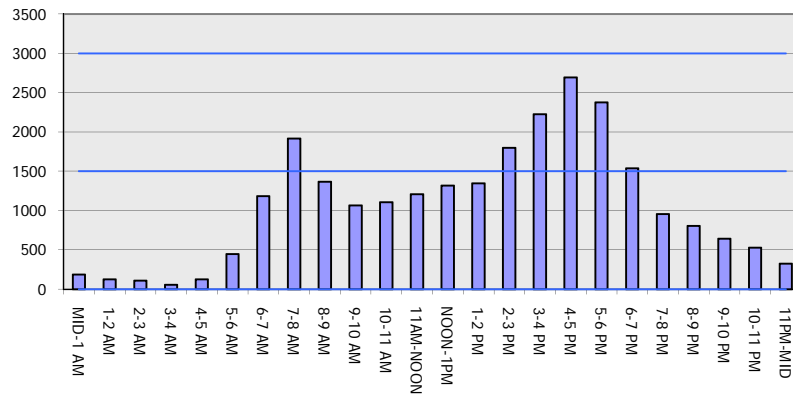
Analyzed for 2009  
Construction Season

**GRAPHICAL REPRESENTATION OF TRAFFIC MODEL INPUT AND OUTPUT**

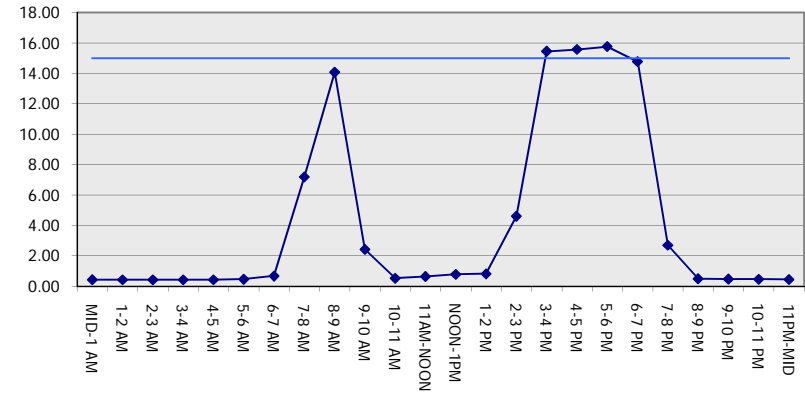
**MON-THUR**

**NORTHBOUND DIRECTION**

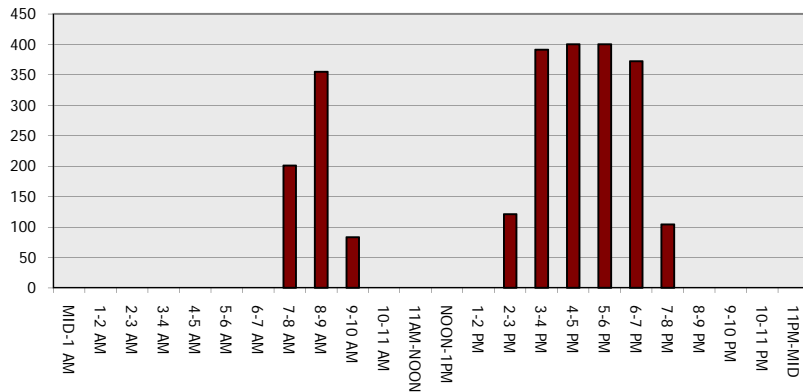
**Main Route - Traffic Demand (Vehicles Per Hour)**



**Main Route Average Delay Per Vehicle (Minutes)**



**Main Route - Average Queue Length (Vehicles)**



**Main Route - Average Speed (MPH)**

