

<b>STH 441: USH 10 TO CTH CE (OUTAGAMIE COUNTY)                  CONTINUOUS (24 HOUR) CLOSURE                  NO DIVERSION ROUTE (MAX QUEUE METHOD)</b>	<b>AUGUST</b>
	Analyzed for 2009 Construction Season

**SUMMARY OF TRAFFIC MODEL OUTPUT**

SUNDAY SOUTHBOUND DIRECTION

TIME OF DAY	FLOWS AND CAPACITY IN VEH/HR						AVERAGE SPEEDS IN MPH			
	MAIN ROUTE		SITE CAPA CITY	FLOW		AV.DEL PER VEH (MINS)	AVERAGE QUEUE (VEH)	MAIN ROUTE		SITE
	DEMAND FLOW	PCT HEAVY		MAIN ROUTE	'DIVER TED'			WITHOUT WORK ZONE	WITH WORK ZONE	
MID-1 AM	213	0.0	1500	213	0	0.44	0	66.0	58.3	44.6
1-2 AM	140	0.0	1500	140	0	0.44	0	66.1	58.5	44.9
2-3 AM	117	0.0	1500	117	0	0.43	0	66.1	58.6	45.0
3-4 AM	84	0.0	1500	84	0	0.43	0	66.2	58.7	45.1
4-5 AM	89	0.0	1500	89	0	0.43	0	66.2	58.7	45.1
5-6 AM	179	0.0	1500	179	0	0.44	0	66.1	58.4	44.8
6-7 AM	241	0.0	1500	241	0	0.45	0	66.0	58.2	44.5
7-8 AM	268	0.0	1500	268	0	0.45	0	65.9	58.1	44.4
8-9 AM	391	0.0	1500	391	0	0.46	0	65.6	57.8	43.9
9-10 AM	572	0.0	1500	572	0	0.48	0	65.3	57.3	43.2
10-11 AM	879	0.0	1500	879	0	0.51	0	64.8	56.4	42.1
11AM-NOON	979	0.0	1500	979	0	0.52	0	64.6	56.1	41.7
NOON-1PM	1071	0.0	1500	1071	0	0.53	0	64.4	55.9	41.4
1-2 PM	1042	0.0	1500	1042	0	0.52	0	64.5	56.0	41.5
2-3 PM	1021	0.0	1500	1021	0	0.52	0	64.5	56.0	41.6
3-4 PM	945	0.0	1500	945	0	0.51	0	64.6	56.2	41.9
4-5 PM	848	0.0	1500	848	0	0.50	0	64.8	56.4	42.2
5-6 PM	822	0.0	1500	822	0	0.50	0	64.8	56.6	42.3
6-7 PM	732	0.0	1500	732	0	0.49	0	65.0	56.8	42.7
7-8 PM	545	0.0	1500	545	0	0.48	0	65.4	57.3	43.3
8-9 PM	457	0.0	1500	457	0	0.47	0	65.5	57.6	43.7
9-10 PM	435	0.0	1500	435	0	0.46	0	65.6	57.6	43.8
10-11 PM	312	0.0	1500	312	0	0.45	0	65.8	58.0	44.2
11PM-MID	272	0.0	1500	272	0	0.45	0	65.9	58.1	44.4

**\*----- SITE BREAKDOWN DELAYS -----\***

BREAKDOWN DURATION (MINS)	0
RANGE OF QUEUE DELAY - MIN (VEH-H) MAX	0.0
AV BREAKDOWNS PER DAY	0.00
AV QUEUE DELAY/DAY (VEH-H)	0.0
AV TOTAL DELAY/DAY (VEH-H)	0.0

**\*----- SITE ACCIDENT DELAYS -----\***

BREAKDOWN DURATION (MINS)	0
RANGE OF QUEUE DELAY - MIN (VEH-H) MAX	0
AV BREAKDOWNS PER DAY	0
AV QUEUE DELAY/DAY (VEH-H)	0
AV TOTAL DELAY/DAY (VEH-H)	0

**AVERAGE ACCIDENT NUMBERS (PIA/DAY)**

MAIN ROUTE WITHOUT WORKS	0.0074
MAIN ROUTE WITH WORKS	0.0066
'DIVERSION'	0.0000

PIA: Personal Injury Accidents

**IMPACTS ON ROAD USERS**

ROAD USER COSTS PER DAY	\$1,619
CONGESTED HOURS PER DAY*	0

\*Delays Exceeding User-Specified Maximum

**STH 441: USH 10 TO CTH CE (OUTAGAMIE COUNTY)  
CONTINUOUS (24 HOUR) CLOSURE  
NO DIVERSION ROUTE (MAX QUEUE METHOD)**

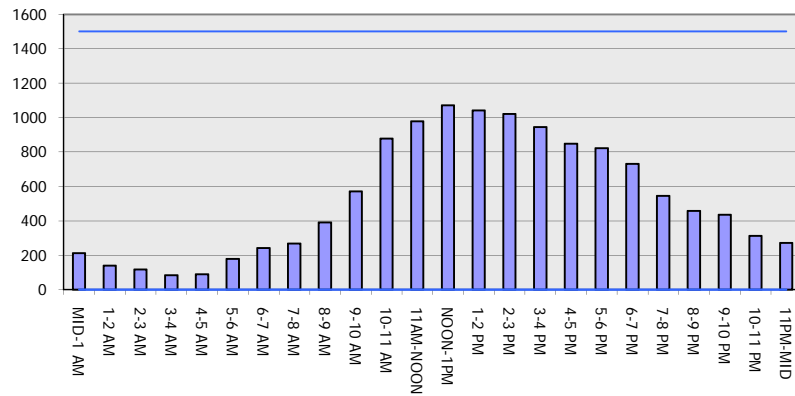
**AUGUST**

Analyzed for 2009  
Construction Season

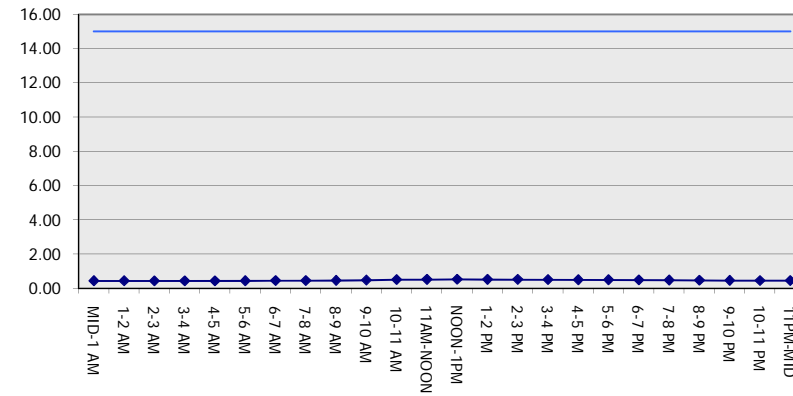
**GRAPHICAL REPRESENTATION OF TRAFFIC MODEL INPUT AND OUTPUT**

**SUNDAY SOUTHBOUND DIRECTION**

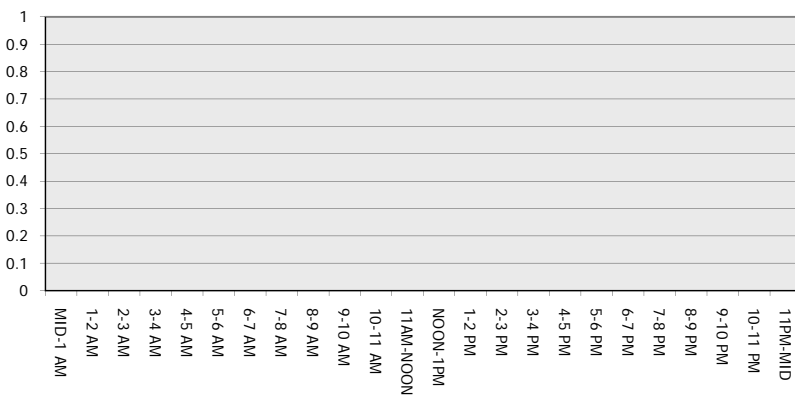
**Main Route - Traffic Demand (Vehicles Per Hour)**



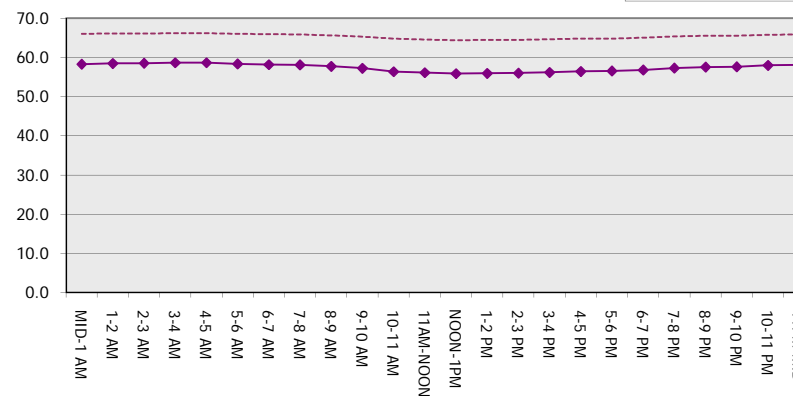
**Main Route Average Delay Per Vehicle (Minutes)**



**Main Route - Average Queue Length (Vehicles)**



**Main Route - Average Speed (MPH)**



<b>STH 441: USH 10 TO CTH CE (OUTAGAMIE COUNTY)                  CONTINUOUS (24 HOUR) CLOSURE                  NO DIVERSION ROUTE (MAX QUEUE METHOD)</b>	<b>AUGUST</b>
	Analyzed for 2009 Construction Season

**SUMMARY OF TRAFFIC MODEL OUTPUT**

SUNDAY NORTHBOUND DIRECTION

TIME OF DAY	FLOWS AND CAPACITY IN VEH/HR							AVERAGE SPEEDS IN MPH		
	MAIN ROUTE		SITE CAPA CITY	FLOW		AV.DEL PER VEH (MINS)	AVERAGE QUEUE (VEH)	MAIN ROUTE		SITE
	DEMAND FLOW	PCT HEAVY		MAIN ROUTE	'DIVER TED'			WITHOUT WORK ZONE	WITH WORK ZONE	
MID-1 AM	293	0.0	1500	293	0	0.45	0	65.8	58.1	44.3
1-2 AM	181	0.0	1500	181	0	0.44	0	66.1	58.4	44.8
2-3 AM	135	0.0	1500	135	0	0.44	0	66.1	58.5	45.0
3-4 AM	93	0.0	1500	93	0	0.43	0	66.2	58.7	45.1
4-5 AM	75	0.0	1500	75	0	0.43	0	66.3	58.7	45.2
5-6 AM	134	0.0	1500	134	0	0.44	0	66.1	58.6	45.0
6-7 AM	277	0.0	1500	277	0	0.45	0	65.9	58.1	44.4
7-8 AM	223	0.0	1500	223	0	0.44	0	66.0	58.2	44.6
8-9 AM	394	0.0	1500	394	0	0.46	0	65.6	57.8	43.9
9-10 AM	608	0.0	1500	608	0	0.48	0	65.3	57.1	43.1
10-11 AM	880	0.0	1500	880	0	0.51	0	64.8	56.4	42.1
11AM-NOON	1076	0.0	1500	1076	0	0.53	0	64.4	55.8	41.4
NOON-1PM	1124	0.0	1500	1124	0	0.54	0	64.3	55.6	41.0
1-2 PM	1270	0.0	1500	1270	0	0.73	0	64.0	52.9	36.3
2-3 PM	1262	0.0	1500	1262	0	0.72	0	64.0	53.0	36.6
3-4 PM	1390	0.0	1500	1390	0	0.88	0	63.8	50.9	33.2
4-5 PM	1346	0.0	1500	1346	0	0.83	0	63.9	51.6	34.3
5-6 PM	1325	0.0	1500	1325	0	0.80	0	63.9	52.0	34.8
6-7 PM	1242	0.0	1500	1242	0	0.69	0	64.1	53.4	37.1
7-8 PM	994	0.0	1500	994	0	0.52	0	64.5	56.1	41.7
8-9 PM	834	0.0	1500	834	0	0.50	0	64.8	56.5	42.3
9-10 PM	639	0.0	1500	639	0	0.48	0	65.2	57.1	43.0
10-11 PM	431	0.0	1500	431	0	0.46	0	65.6	57.7	43.8
11PM-MID	248	0.0	1500	248	0	0.45	0	66.0	58.2	44.5

*----- SITE BREAKDOWN DELAYS -----*	
BREAKDOWN DURATION (MINS)	0
RANGE OF QUEUE DELAY - MIN (VEH-H) MAX	0.0
AV BREAKDOWNS PER DAY	0.00
AV QUEUE DELAY/DAY (VEH-H)	0.0
AV TOTAL DELAY/DAY (VEH-H)	0.0

*----- SITE ACCIDENT DELAYS -----*	
BREAKDOWN DURATION (MINS)	0
RANGE OF QUEUE DELAY - MIN (VEH-H) MAX	0
AV BREAKDOWNS PER DAY	0
AV QUEUE DELAY/DAY (VEH-H)	0
AV TOTAL DELAY/DAY (VEH-H)	0

AVERAGE ACCIDENT NUMBERS (PIA/DAY)	
MAIN ROUTE WITHOUT WORKS	0.0097
MAIN ROUTE WITH WORKS	0.0086
'DIVERSION'	0.0000

PIA: Personal Injury Accidents

ECONOMIC IMPACT ON ROAD USERS	
ROAD USER COSTS PER DAY	\$2,683
CONGESTED HOURS PER DAY*	0

\*Delays Exceeding User-Specified Maximum

**STH 441: USH 10 TO CTH CE (OUTAGAMIE COUNTY)  
CONTINUOUS (24 HOUR) CLOSURE  
NO DIVERSION ROUTE (MAX QUEUE METHOD)**

**AUGUST**  
Analyzed for 2009  
Construction Season

**GRAPHICAL REPRESENTATION OF TRAFFIC MODEL INPUT AND OUTPUT**  
**SUNDAY NORTHBOUND DIRECTION**

