

STH 441: USH 10 TO CTH CE (OUTAGAMIE COUNTY) CONTINUOUS (24 HOUR) CLOSURE NO DIVERSION ROUTE (MAX QUEUE METHOD)	AUGUST
	Analyzed for 2009 Construction Season

SUMMARY OF TRAFFIC MODEL OUTPUT

SATURDAY SOUTHBOUND DIRECTION

TIME OF DAY	FLOWS AND CAPACITY IN VEH/HR						AVERAGE SPEEDS IN MPH			
	MAIN ROUTE		SITE CAPA CITY	FLOW		AV.DEL PER VEH (MINS)	AVERAGE QUEUE (VEH)	MAIN ROUTE		SITE
	DEMAND FLOW	PCT HEAVY		MAIN ROUTE	'DIVER TED'			WITHOUT WORK ZONE	WITH WORK ZONE	
MID-1 AM	247	0.0	1500	247	0	0.45	0	66.0	58.2	44.5
1-2 AM	132	0.0	1500	132	0	0.44	0	66.1	58.6	45.0
2-3 AM	109	0.0	1500	109	0	0.43	0	66.2	58.6	45.0
3-4 AM	103	0.0	1500	103	0	0.43	0	66.2	58.6	45.1
4-5 AM	175	0.0	1500	175	0	0.44	0	66.1	58.4	44.8
5-6 AM	306	0.0	1500	306	0	0.45	0	65.8	58.0	44.3
6-7 AM	412	0.0	1500	412	0	0.46	0	65.6	57.7	43.8
7-8 AM	611	0.0	1500	611	0	0.48	0	65.3	57.1	43.1
8-9 AM	784	0.0	1500	784	0	0.50	0	64.9	56.6	42.5
9-10 AM	975	0.0	1500	975	0	0.52	0	64.6	56.1	41.8
10-11 AM	1092	0.0	1500	1092	0	0.53	0	64.3	55.8	41.4
11AM-NOON	1070	0.0	1500	1070	0	0.53	0	64.4	55.9	41.4
NOON-1PM	1060	0.0	1500	1060	0	0.52	0	64.4	55.9	41.5
1-2 PM	1006	0.0	1500	1006	0	0.52	0	64.5	56.0	41.7
2-3 PM	1000	0.0	1500	1000	0	0.52	0	64.5	56.1	41.7
3-4 PM	939	0.0	1500	939	0	0.51	0	64.6	56.2	41.9
4-5 PM	852	0.0	1500	852	0	0.50	0	64.8	56.4	42.2
5-6 PM	823	0.0	1500	823	0	0.50	0	64.8	56.6	42.3
6-7 PM	688	0.0	1500	688	0	0.49	0	65.1	56.9	42.8
7-8 PM	550	0.0	1500	550	0	0.48	0	65.4	57.3	43.3
8-9 PM	463	0.0	1500	463	0	0.47	0	65.5	57.6	43.7
9-10 PM	461	0.0	1500	461	0	0.47	0	65.5	57.6	43.7
10-11 PM	437	0.0	1500	437	0	0.46	0	65.6	57.6	43.7
11PM-MID	359	0.0	1500	359	0	0.46	0	65.7	57.9	44.0

----- SITE BREAKDOWN DELAYS -----

BREAKDOWN DURATION (MINS)	0
RANGE OF QUEUE DELAY - MIN (VEH-H) MAX	0.0
AV BREAKDOWNS PER DAY	0.00
AV QUEUE DELAY/DAY (VEH-H)	0.0
AV TOTAL DELAY/DAY (VEH-H)	0.0

----- SITE ACCIDENT DELAYS -----

BREAKDOWN DURATION (MINS)	0
RANGE OF QUEUE DELAY - MIN (VEH-H) MAX	0
AV BREAKDOWNS PER DAY	0
AV QUEUE DELAY/DAY (VEH-H)	0
AV TOTAL DELAY/DAY (VEH-H)	0

AVERAGE ACCIDENT NUMBERS (PIA/DAY)

MAIN ROUTE WITHOUT WORKS	0.0086
MAIN ROUTE WITH WORKS	0.0077
'DIVERSION'	0.0000

PIA: Personal Injury Accidents

IMPACTS ON ROAD USERS

ROAD USER COSTS PER DAY	\$1,862
CONGESTED HOURS PER DAY*	0

*Delays Exceeding User-Specified Maximum

**STH 441: USH 10 TO CTH CE (OUTAGAMIE COUNTY)
CONTINUOUS (24 HOUR) CLOSURE
NO DIVERSION ROUTE (MAX QUEUE METHOD)**

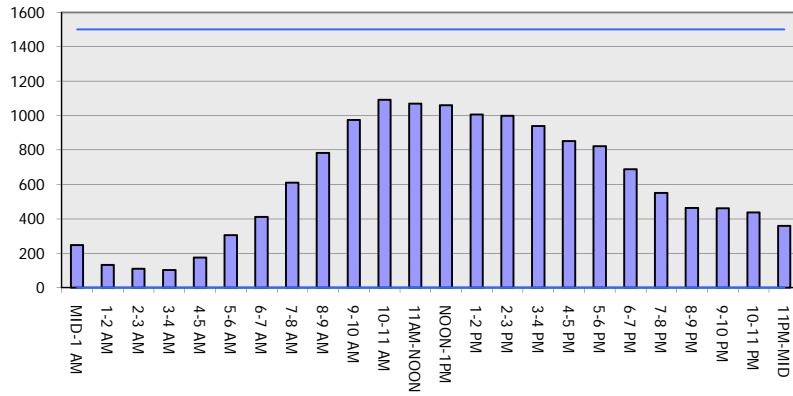
AUGUST

Analyzed for 2009
Construction Season

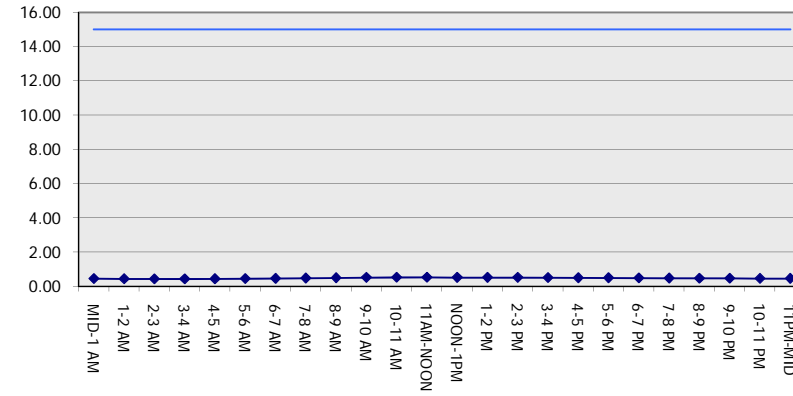
GRAPHICAL REPRESENTATION OF TRAFFIC MODEL INPUT AND OUTPUT

SATURDAY SOUTHBOUND DIRECTION

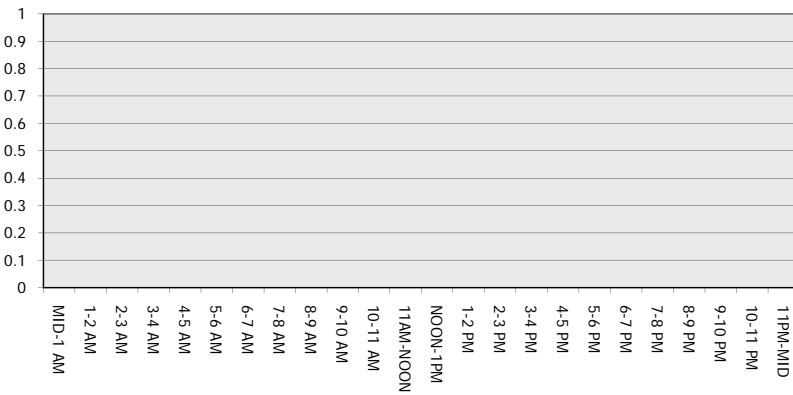
Main Route - Traffic Demand (Vehicles Per Hour)



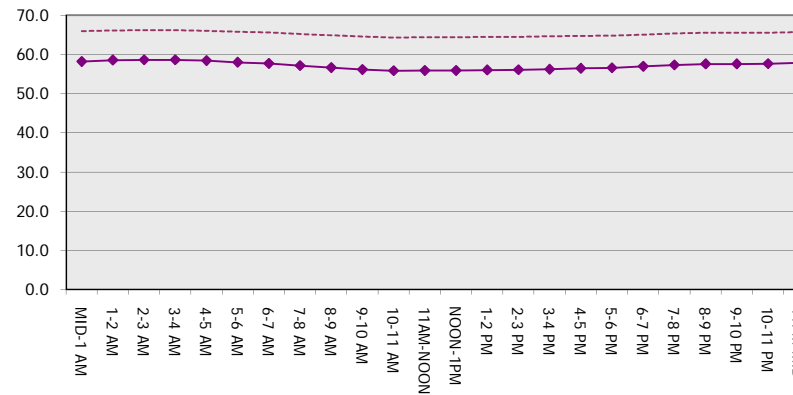
Main Route Average Delay Per Vehicle (Minutes)



Main Route - Average Queue Length (Vehicles)



Main Route - Average Speed (MPH)



STH 441: USH 10 TO CTH CE (OUTAGAMIE COUNTY) CONTINUOUS (24 HOUR) CLOSURE NO DIVERSION ROUTE (MAX QUEUE METHOD)	AUGUST
	Analyzed for 2009 Construction Season

SUMMARY OF TRAFFIC MODEL OUTPUT

SATURDAY NORTHBOUND DIRECTION

TIME OF DAY	FLOWS AND CAPACITY IN VEH/HR							AVERAGE SPEEDS IN MPH		
	MAIN ROUTE		SITE CAPA CITY	FLOW		AV.DEL PER VEH (MINS)	AVERAGE QUEUE (VEH)	MAIN ROUTE		SITE
	DEMAND FLOW	PCT HEAVY		MAIN ROUTE	'DIVER TED'			WITHOUT WORK ZONE	WITH WORK ZONE	
MID-1 AM	314	0.0	1500	314	0	0.45	0	65.8	58.0	44.2
1-2 AM	192	0.0	1500	192	0	0.44	0	66.0	58.4	44.7
2-3 AM	154	0.0	1500	154	0	0.44	0	66.1	58.5	44.8
3-4 AM	115	0.0	1500	115	0	0.43	0	66.2	58.6	45.0
4-5 AM	106	0.0	1500	106	0	0.43	0	66.2	58.6	45.1
5-6 AM	231	0.0	1500	231	0	0.44	0	66.0	58.2	44.6
6-7 AM	412	0.0	1500	412	0	0.46	0	65.6	57.7	43.8
7-8 AM	464	0.0	1500	464	0	0.47	0	65.5	57.6	43.7
8-9 AM	619	0.0	1500	619	0	0.48	0	65.2	57.1	43.0
9-10 AM	841	0.0	1500	841	0	0.50	0	64.8	56.5	42.2
10-11 AM	1054	0.0	1500	1054	0	0.52	0	64.4	55.9	41.5
11AM-NOON	1195	0.0	1500	1195	0	0.63	0	64.1	54.3	38.6
NOON-1PM	1269	0.0	1500	1269	0	0.73	0	64.0	52.9	36.4
1-2 PM	1286	0.0	1500	1286	0	0.75	0	64.0	52.7	35.9
2-3 PM	1255	0.0	1500	1255	0	0.71	0	64.0	53.2	36.8
3-4 PM	1307	0.0	1500	1307	0	0.78	0	64.0	52.3	35.3
4-5 PM	1213	0.0	1500	1213	0	0.65	0	64.1	54.0	38.1
5-6 PM	1183	0.0	1500	1183	0	0.61	0	64.2	54.5	39.0
6-7 PM	1082	0.0	1500	1082	0	0.53	0	64.4	55.8	41.4
7-8 PM	846	0.0	1500	846	0	0.50	0	64.8	56.5	42.2
8-9 PM	901	0.0	1500	901	0	0.51	0	64.7	56.3	42.0
9-10 PM	821	0.0	1500	821	0	0.50	0	64.8	56.6	42.3
10-11 PM	688	0.0	1500	688	0	0.49	0	65.1	56.9	42.8
11PM-MID	434	0.0	1500	434	0	0.46	0	65.6	57.6	43.8

----- SITE BREAKDOWN DELAYS -----	
BREAKDOWN DURATION (MINS)	0
RANGE OF QUEUE DELAY - MIN (VEH-H) MAX	0.0
AV BREAKDOWNS PER DAY	0.00
AV QUEUE DELAY/DAY (VEH-H)	0.0
AV TOTAL DELAY/DAY (VEH-H)	0.0

----- SITE ACCIDENT DELAYS -----	
BREAKDOWN DURATION (MINS)	0
RANGE OF QUEUE DELAY - MIN (VEH-H) MAX	0
AV BREAKDOWNS PER DAY	0
AV QUEUE DELAY/DAY (VEH-H)	0
AV TOTAL DELAY/DAY (VEH-H)	0

AVERAGE ACCIDENT NUMBERS (PIA/DAY)	
MAIN ROUTE WITHOUT WORKS	0.0106
MAIN ROUTE WITH WORKS	0.0094
'DIVERSION'	0.0000

PIA: Personal Injury Accidents

ECONOMIC IMPACT ON ROAD USERS	
ROAD USER COSTS PER DAY	\$2,706
CONGESTED HOURS PER DAY*	0

*Delays Exceeding User-Specified Maximum

**STH 441: USH 10 TO CTH CE (OUTAGAMIE COUNTY)
CONTINUOUS (24 HOUR) CLOSURE
NO DIVERSION ROUTE (MAX QUEUE METHOD)**

AUGUST
Analyzed for 2009
Construction Season

GRAPHICAL REPRESENTATION OF TRAFFIC MODEL INPUT AND OUTPUT
SATURDAY NORTHBOUND DIRECTION

