

<b>STH 441: USH 10 TO CTH CE (OUTAGAMIE COUNTY)                  CONTINUOUS (24 HOUR) CLOSURE                  NO DIVERSION ROUTE (MAX QUEUE METHOD)</b>	<b>AUGUST</b>
	Analyzed for 2009 Construction Season

**SUMMARY OF TRAFFIC MODEL OUTPUT**

MON-THUR      SOUTHBOUND DIRECTION

TIME OF DAY	FLOWS AND CAPACITY IN VEH/HR							AVERAGE SPEEDS IN MPH			
	MAIN ROUTE		SITE CAPA CITY	FLOW		AV.DEL PER VEH (MINS)	AVERAGE QUEUE (VEH)	MAIN ROUTE		SITE	
	DEMAND FLOW	PCT HEAVY		MAIN ROUTE	'DIVER TED'			WITHOUT WORK ZONE	WITH WORK ZONE		
MID-1 AM	114	0.0	1500	114	0	0.43	0	66.2	58.6	45.0	
1-2 AM	78	0.0	1500	78	0	0.43	0	66.3	58.7	45.2	
2-3 AM	67	0.0	1500	67	0	0.43	0	66.3	58.7	45.2	
3-4 AM	102	0.0	1500	102	0	0.43	0	66.2	58.6	45.1	
4-5 AM	304	0.0	1500	304	0	0.45	0	65.8	58.1	44.3	
5-6 AM	862	0.0	1500	862	0	0.51	0	64.8	56.4	42.2	
6-7 AM	1563	0.0	1499	1563	0	1.75	27	63.5	42.3	31.8	
7-8 AM	2098	0.0	1500	1815	282	12.68+	333	62.5	13.7	30.8	
8-9 AM	1299	0.0	1499	1271	29	12.98+	332	64.0	13.5	31.1	
9-10 AM	1032	0.0	1500	1032	0	1.55	43	64.5	44.4	40.0	
10-11 AM	1052	0.0	1500	1052	0	0.52	0	64.4	55.9	41.5	
11AM-NOON	1119	0.0	1500	1119	0	0.53	0	64.3	55.7	41.2	
NOON-1PM	1210	0.0	1500	1210	0	0.65	0	64.1	54.0	38.1	
1-2 PM	1319	0.0	1500	1319	0	0.79	0	63.9	52.0	35.0	
2-3 PM	1304	0.0	1500	1304	0	0.77	0	64.0	52.3	35.4	
3-4 PM	1417	0.0	1499	1417	0	0.92	0	63.7	50.4	32.6	
4-5 PM	1649	0.0	1499	1649	0	3.27	68	63.3	32.7	30.8	
5-6 PM	1616	0.0	1500	1616	0	9.24	225	63.4	17.4	30.8	
6-7 PM	1075	0.0	1499	1075	0	3.01	104	64.4	34.3	37.1	
7-8 PM	720	0.0	1500	720	0	0.49	0	65.0	56.8	42.7	
8-9 PM	637	0.0	1500	637	0	0.48	0	65.2	57.1	43.0	
9-10 PM	517	0.0	1500	517	0	0.47	0	65.4	57.4	43.5	
10-11 PM	418	0.0	1500	418	0	0.46	0	65.6	57.7	43.8	
11PM-MID	277	0.0	1500	277	0	0.45	0	65.9	58.1	44.4	

+ INDICATES QUEUEING EXCEEDS USER-SPECIFIED MAXIMUM LIMIT

*----- SITE BREAKDOWN DELAYS -----*	
BREAKDOWN DURATION (MINS)	0
RANGE OF QUEUE DELAY - MIN (VEH-H) MAX	0.0
AV BREAKDOWNS PER DAY	0.00
AV QUEUE DELAY/DAY (VEH-H)	0.0
AV TOTAL DELAY/DAY (VEH-H)	0.0

*----- SITE ACCIDENT DELAYS -----*	
BREAKDOWN DURATION (MINS)	0
RANGE OF QUEUE DELAY - MIN (VEH-H) MAX	0
AV BREAKDOWNS PER DAY	0
AV QUEUE DELAY/DAY (VEH-H)	0
AV TOTAL DELAY/DAY (VEH-H)	0

AVERAGE ACCIDENT NUMBERS (PIA/DAY)	
MAIN ROUTE WITHOUT WORKS	0.0129
MAIN ROUTE WITH WORKS	0.0112
'DIVERSION'	0.0004
<small>PIA: Personal Injury Accidents</small>	
IMPACTS ON ROAD USERS	
ROAD USER COSTS PER DAY	\$17,270
CONGESTED HOURS PER DAY*	2

\*Delays Exceeding User-Specified Maximum

**STH 441: USH 10 TO CTH CE (OUTAGAMIE COUNTY)  
CONTINUOUS (24 HOUR) CLOSURE  
NO DIVERSION ROUTE (MAX QUEUE METHOD)**

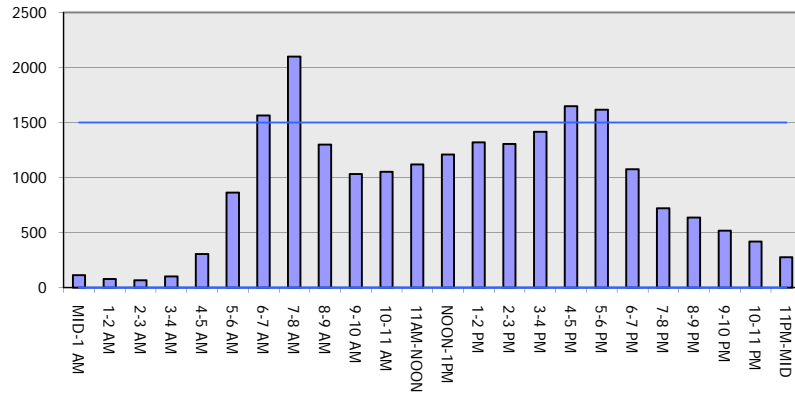
**AUGUST**

Analyzed for 2009  
Construction Season

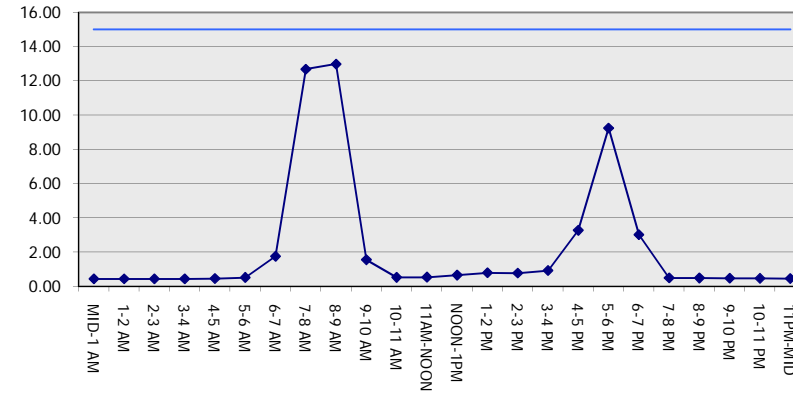
**GRAPHICAL REPRESENTATION OF TRAFFIC MODEL INPUT AND OUTPUT**

**MON-THUR SOUTHBOUND DIRECTION**

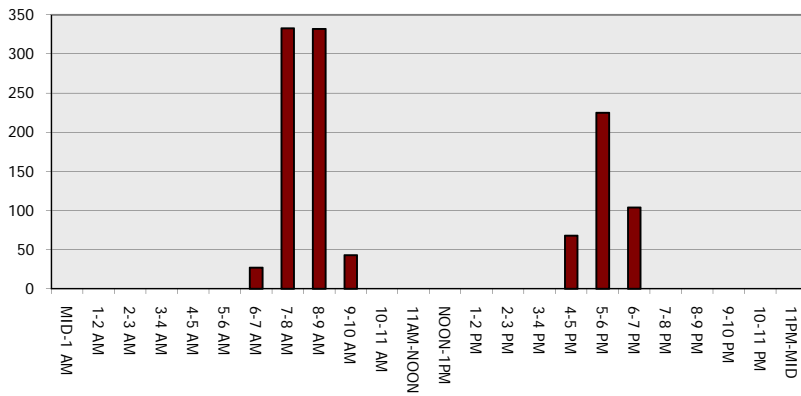
**Main Route - Traffic Demand (Vehicles Per Hour)**



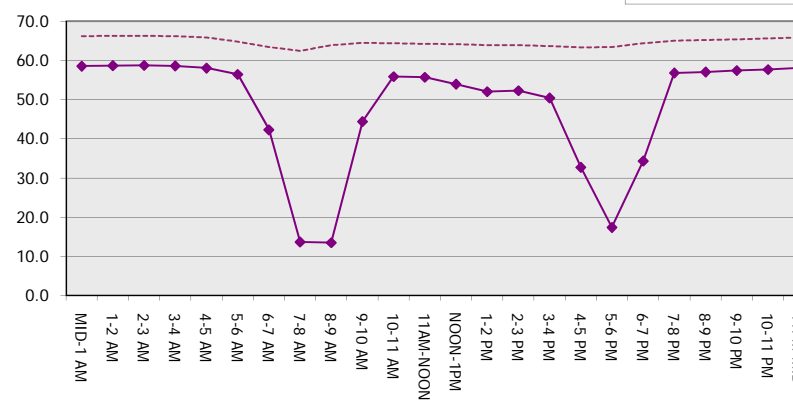
**Main Route Average Delay Per Vehicle (Minutes)**



**Main Route - Average Queue Length (Vehicles)**



**Main Route - Average Speed (MPH)**



<b>STH 441: USH 10 TO CTH CE (OUTAGAMIE COUNTY)                  CONTINUOUS (24 HOUR) CLOSURE                  NO DIVERSION ROUTE (MAX QUEUE METHOD)</b>	<b>AUGUST</b>
	Analyzed for 2009 Construction Season

**SUMMARY OF TRAFFIC MODEL OUTPUT**

MON-THUR                      NORTHBOUND DIRECTION

TIME OF DAY	FLOWS AND CAPACITY IN VEH/HR							AVERAGE SPEEDS IN MPH		
	MAIN ROUTE		SITE CAPA CITY	FLOW		AV.DEL PER VEH (MINS)	AVERAGE QUEUE (VEH)	MAIN ROUTE		SITE
	DEMAND FLOW	PCT HEAVY		MAIN ROUTE	'DIVER TED'			WITHOUT WORK ZONE	WITH WORK ZONE	
MID-1 AM	205	0.0	1500	205	0	0.44	0	66.0	58.3	44.6
1-2 AM	132	0.0	1500	132	0	0.44	0	66.1	58.6	45.0
2-3 AM	112	0.0	1500	112	0	0.43	0	66.2	58.6	45.0
3-4 AM	79	0.0	1500	79	0	0.43	0	66.3	58.7	45.1
4-5 AM	144	0.0	1500	144	0	0.44	0	66.1	58.5	44.9
5-6 AM	504	0.0	1500	504	0	0.47	0	65.5	57.4	43.5
6-7 AM	1270	0.0	1499	1270	0	0.72	0	64.0	53.0	36.8
7-8 AM	1766	0.0	1499	1766	0	5.28	133	63.1	25.2	30.8
8-9 AM	1264	0.0	1499	1264	0	6.57	169	64.0	22.1	32.6
9-10 AM	1103	0.0	1500	1103	0	0.57	1	64.3	55.1	41.2
10-11 AM	1129	0.0	1500	1129	0	0.55	0	64.3	55.5	40.9
11AM-NOON	1255	0.0	1500	1255	0	0.71	0	64.0	53.2	36.8
NOON-1PM	1334	0.0	1500	1334	0	0.81	0	63.9	51.8	34.6
1-2 PM	1410	0.0	1499	1410	0	0.91	0	63.8	50.5	32.8
2-3 PM	1874	0.0	1499	1874	0	5.91	164	62.9	23.5	30.8
3-4 PM	2131	0.0	1499	1500	631	15.79+	399	62.4	11.5	30.8
4-5 PM	2747	0.0	1500	1500	1247	15.54+	400	58.4	11.5	30.8
5-6 PM	2367	0.0	1500	1500	867	15.76+	400	62.0	11.5	30.8
6-7 PM	1547	0.0	1500	1443	104	14.79+	373	63.5	12.1	30.8
7-8 PM	1084	0.0	1499	1084	0	3.88	136	64.3	30.2	36.8
8-9 PM	1008	0.0	1500	1008	0	0.52	0	64.5	56.0	41.7
9-10 PM	800	0.0	1500	800	0	0.50	0	64.9	56.6	42.4
10-11 PM	674	0.0	1500	674	0	0.49	0	65.1	56.9	42.8
11PM-MID	432	0.0	1500	432	0	0.46	0	65.6	57.6	43.8

+ INDICATES QUEUEING EXCEEDS USER-SPECIFIED MAXIMUM LIMIT

*----- SITE BREAKDOWN DELAYS -----*	
BREAKDOWN DURATION (MINS)	0
RANGE OF QUEUE DELAY - MIN (VEH-H) MAX	0.0
AV BREAKDOWNS PER DAY	0.00
AV QUEUE DELAY/DAY (VEH-H)	0.0
AV TOTAL DELAY/DAY (VEH-H)	0.0

*----- SITE ACCIDENT DELAYS -----*	
BREAKDOWN DURATION (MINS)	0
RANGE OF QUEUE DELAY - MIN (VEH-H) MAX	0
AV BREAKDOWNS PER DAY	0
AV QUEUE DELAY/DAY (VEH-H)	0
AV TOTAL DELAY/DAY (VEH-H)	0

AVERAGE ACCIDENT NUMBERS (PIA/DAY)	
MAIN ROUTE WITHOUT WORKS	0.0155
MAIN ROUTE WITH WORKS	0.0123
'DIVERSION'	0.0039

PIA: Personal Injury Accidents

ECONOMIC IMPACT ON ROAD USERS	
ROAD USER COSTS PER DAY	\$38,862
CONGESTED HOURS PER DAY*	4

\*Delays Exceeding User-Specified Maximum

**STH 441: USH 10 TO CTH CE (OUTAGAMIE COUNTY)  
CONTINUOUS (24 HOUR) CLOSURE  
NO DIVERSION ROUTE (MAX QUEUE METHOD)**

**AUGUST**

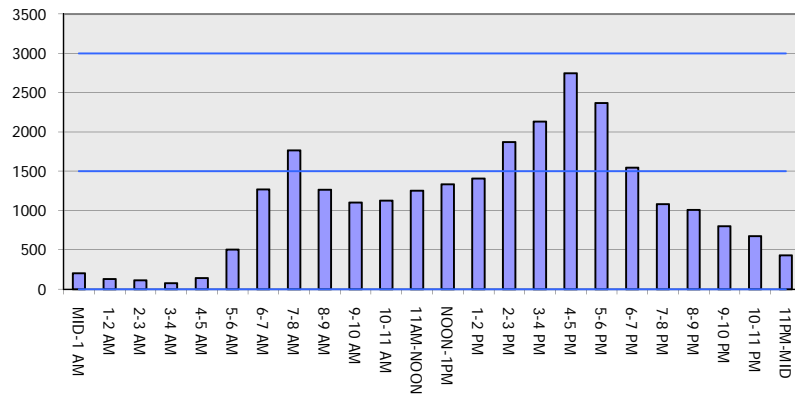
Analyzed for 2009  
Construction Season

**GRAPHICAL REPRESENTATION OF TRAFFIC MODEL INPUT AND OUTPUT**

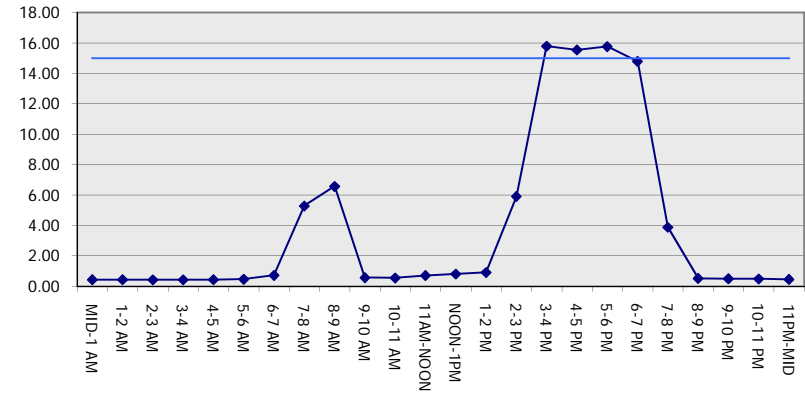
**MON-THUR**

**NORTHBOUND DIRECTION**

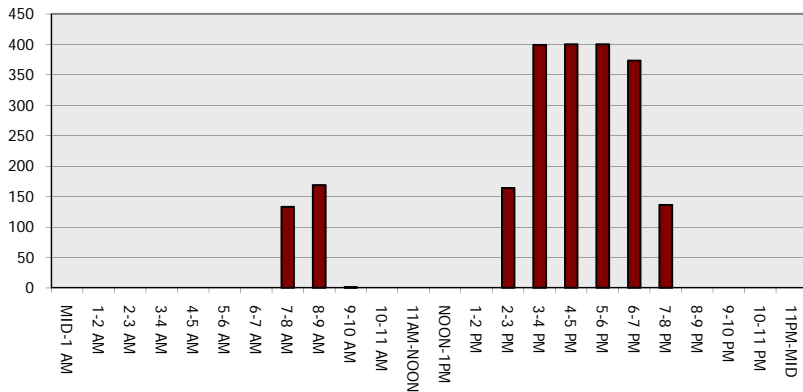
**Main Route - Traffic Demand (Vehicles Per Hour)**



**Main Route Average Delay Per Vehicle (Minutes)**



**Main Route - Average Queue Length (Vehicles)**



**Main Route - Average Speed (MPH)**

