

<b>STH 441: CTH 00 TO CTH CE (OUTAGAMIE COUNTY)</b> <b>CONTINUOUS (24 HOUR) CLOSURE</b> <b>DIVERSION ROUTE: CTH CE - CTH N - CTH 00</b>	<b>OCTOBER</b>
	Analyzed for 2009 Construction Season

**SUMMARY OF TRAFFIC MODEL OUTPUT**

MON-THUR                      SOUTHBOUND DIRECTION

TIME OF DAY	FLOWS AND CAPACITY IN VEH/HR						AVERAGE SPEEDS IN MPH								
	MAIN ROUTE		ALTERNATE ROUTE		SITE CAPA CITY	FLOW MAIN ROUTE	FLOW DIVER -TING	TOTAL DIVN FLOW	AV.DEL PER VEH (MINS)	AVERAGE QUEUE (VEH)	MAIN ROUTE		ALTERNATE ROUTE		
	DEMAND FLOW	PCT HEAVY	NORMAL FLOW	PCT HEAVY							WITHOUT WORK ZN	WITH WORK ZN	SITE	WITHOUT WORK ZN	WITH WORK ZN
MID-1 AM	144	0.0	33	0.0	1500	144	0	33	0.44	0	66.1	53.3	44.9	24.6	24.6
1-2 AM	106	0.0	27	0.0	1500	106	0	27	0.43	0	66.2	53.4	45.1	24.7	24.7
2-3 AM	98	0.0	24	0.0	1500	98	0	24	0.43	0	66.2	53.5	45.1	24.7	24.7
3-4 AM	95	0.0	35	0.0	1500	95	0	35	0.43	0	66.2	53.5	45.1	24.6	24.6
4-5 AM	161	0.0	107	0.0	1500	161	0	107	0.44	0	66.1	53.2	44.8	24.0	24.0
5-6 AM	369	0.0	339	0.0	1500	369	0	339	0.46	0	65.7	52.5	44.0	22.2	22.2
6-7 AM	821	0.0	630	0.0	1500	821	0	630	0.50	0	64.8	51.0	42.3	20.0	20.0
7-8 AM	1218	0.0	938	0.0	1500	1218	0	938	0.66	0	64.1	47.4	37.9	17.6	17.6
8-9 AM	1179	0.0	596	0.0	1500	1179	0	596	0.61	0	64.2	48.4	39.1	20.2	20.2
9-10 AM	1151	0.0	417	0.0	1500	1151	0	417	0.57	0	64.2	49.1	40.1	21.6	21.6
10-11 AM	1059	0.0	406	0.0	1500	1059	0	406	0.52	0	64.4	50.2	41.5	21.7	21.7
11A-NOON	998	0.0	435	0.0	1500	998	0	435	0.52	0	64.5	50.4	41.7	21.5	21.5
NOON-1PM	974	0.0	466	0.0	1500	974	0	466	0.52	0	64.6	50.5	41.8	21.2	21.2
1-2 PM	987	0.0	508	0.0	1500	987	0	508	0.52	0	64.5	50.5	41.7	20.9	20.9
2-3 PM	1009	0.0	526	0.0	1500	1009	0	526	0.52	0	64.5	50.4	41.7	20.8	20.8
3-4 PM	1142	0.0	618	0.0	1500	1142	0	618	0.56	0	64.3	49.4	40.4	20.1	20.1
4-5 PM	1339	0.0	696	0.0	1500	1339	0	696	0.82	0	63.9	44.5	34.5	19.5	19.5
5-6 PM	1259	0.0	666	0.0	1500	1259	0	666	0.71	0	64.0	46.4	36.6	19.7	19.7
6-7 PM	965	0.0	441	0.0	1500	965	0	441	0.52	0	64.6	50.5	41.8	21.5	21.5
7-8 PM	635	0.0	275	0.0	1500	635	0	275	0.48	0	65.2	51.6	43.0	22.7	22.7
8-9 PM	496	0.0	225	0.0	1500	496	0	225	0.47	0	65.5	52.1	43.5	23.1	23.1
9-10 PM	428	0.0	218	0.0	1500	428	0	218	0.46	0	65.6	52.3	43.8	23.2	23.2
10-11 PM	324	0.0	143	0.0	1500	324	0	143	0.45	0	65.8	52.7	44.2	23.7	23.7
11PM-MID	221	0.0	75	0.0	1500	221	0	75	0.44	0	66.0	53.0	44.6	24.3	24.3

*----- SITE BREAKDOWN DELAYS -----*	
BREAKDOWN DURATION (MINS)	0
RANGE OF QUEUE DELAY - MIN	0.0
(VEH-H) MAX	0.0
RANGE OF DIVN DELAY - MIN	0.0
(VEH-H) MAX	0.0
AV BREAKDOWNS PER DAY	0.00
AV QUEUE DELAY/DAY (VEH-H)	0.0
AV DIVN DELAY/DAY (VEH-H)	0.0
AV TOTAL DELAY/DAY (VEH-H)	0.0

*----- SITE ACCIDENT DELAYS -----*	
ACCIDENT DURATION (MINS)	0
RANGE OF QUEUE DELAY - MIN	0.0
(VEH-H) MAX	0.0
RANGE OF DIVN DELAY - MIN	0.0
(VEH-H) MAX	0.0
AV ACCIDENTS PER DAY	0.00
AV QUEUE DELAY/DAY (VEH-H)	0.0
AV DIVN DELAY/DAY (VEH-H)	0.0
AV TOTAL DELAY/DAY (VEH-H)	0.0

AVERAGE ACCIDENT NUMBERS (PIA/DAY)	
MAIN ROUTE WITHOUT WORKS	0.0055
MAIN ROUTE WITH WORKS	0.0043
DIVERSION	0.0655

PIA: Personal Injury Accidents

IMPACTS ON ROAD USERS	
ROAD USER COSTS PER DAY ( DOLLARS)	\$1,966
CONGESTED HOURS PER DAY*	0

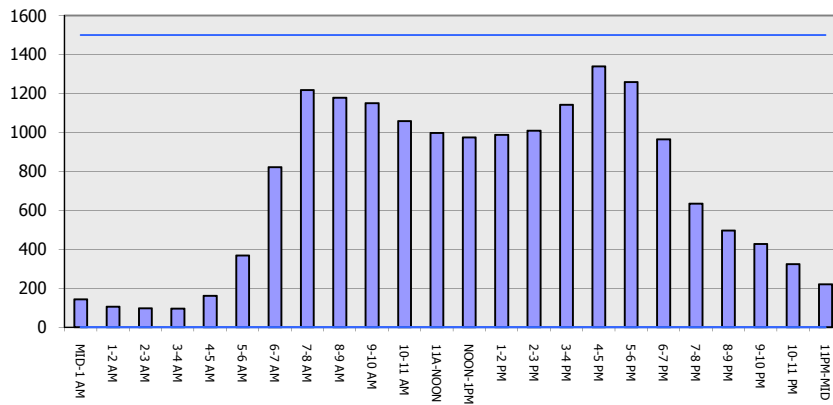
\*Delays Exceeding 15 Minutes

**STH 441: CTH 00 TO CTH CE (OUTAGAMIE COUNTY)  
 CONTINUOUS (24 HOUR) CLOSURE  
 DIVERSION ROUTE: CTH CE - CTH N - CTH 00**

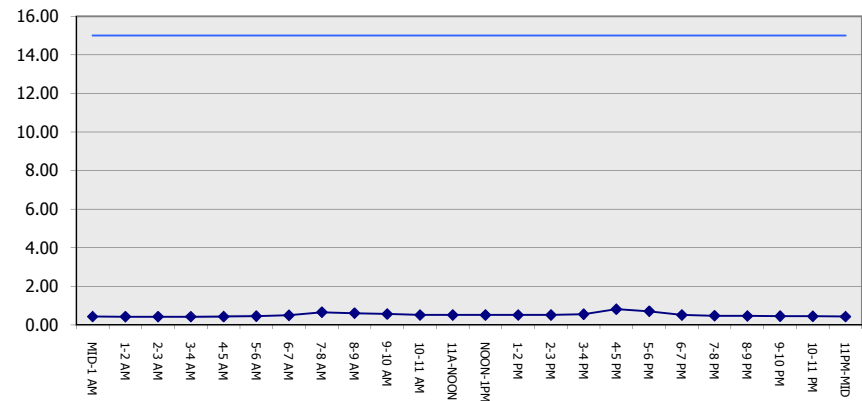
**OCTOBER**  
 Analyzed for 2009  
 Construction Season

**GRAPHICAL REPRESENTATION OF TRAFFIC MODEL INPUT AND OUTPUT**  
**MON-THUR SOUTHBOUND DIRECTION**

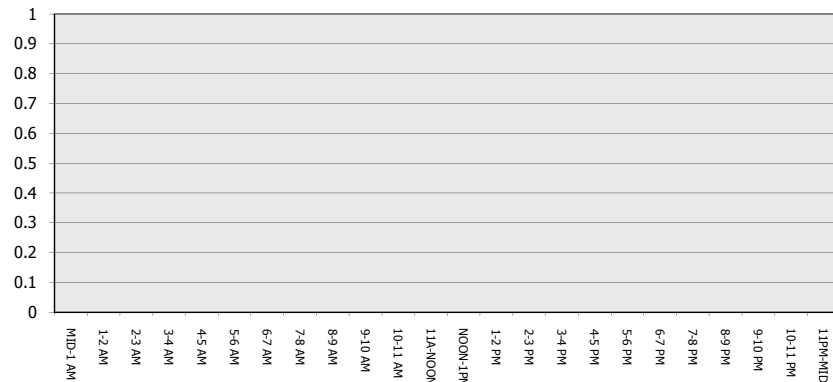
**Main Route - Traffic Demand (Vehicles Per Hour)**



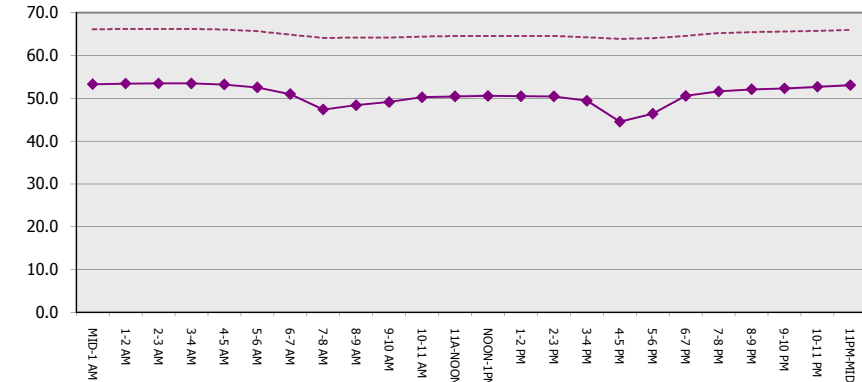
**Main Route Average Delay Per Vehicle (Minutes)**



**Main Route - Average Queue Length (Vehicles)**



**Main Route - Average Speed (MPH)**



<b>STH 441: CTH 00 TO CTH CE (OUTAGAMIE COUNTY) CONTINUOUS (24 HOUR) CLOSURE DIVERSION ROUTE: CTH CE - CTH N - CTH 00</b>	<b>OCTOBER</b>
	Analyzed for 2009 Construction Season

<b>SUMMARY OF TRAFFIC MODEL OUTPUT</b>	
MON-THUR	NORTHBOUND DIRECTION

TIME OF DAY	FLOWS AND CAPACITY IN VEH/HR								AVERAGE SPEEDS IN MPH						
	MAIN		DIVERSION		SITE CAPA CITY	FLOW MAIN ROUTE	FLOW DIVER -TING	TOTAL DIVN FLOW	AV.DEL PER VEH (MINS)	AVERAGE QUEUE (VEH)	MAIN ROUTE		SITE	ALTERNATE ROUTE	
	DEMAND FLOW	PCT HEAVY	NORMAL FLOW	PCT HEAVY							WITHOUT WORK ZN	WITH WORK ZN		WITHOUT WORK ZN	WITH WORK ZN
MID-1 AM	128	0.0	77	0.0	1500	128	0	77	0.43	0	66.1	53.3	45.0	24.2	24.2
1-2 AM	96	0.0	51	0.0	1500	96	0	51	0.43	0	66.2	53.5	45.1	24.5	24.5
2-3 AM	89	0.0	45	0.0	1500	89	0	45	0.43	0	66.2	53.5	45.1	24.5	24.5
3-4 AM	117	0.0	25	0.0	1500	117	0	25	0.43	0	66.1	53.4	45.0	24.7	24.7
4-5 AM	210	0.0	53	0.0	1500	210	0	53	0.44	0	66.0	53.1	44.6	24.5	24.5
5-6 AM	492	0.0	184	0.0	1500	492	0	184	0.47	0	65.5	52.1	43.5	23.4	23.4
6-7 AM	880	0.0	489	0.0	1500	880	0	489	0.51	0	64.8	50.8	42.1	21.1	21.1
7-8 AM	1152	0.0	791	0.0	1500	1152	0	791	0.57	0	64.2	49.1	40.1	18.8	18.8
8-9 AM	1024	0.0	564	0.0	1500	1024	0	564	0.52	0	64.5	50.4	41.6	20.5	20.5
9-10 AM	854	0.0	441	0.0	1500	854	0	441	0.51	0	64.8	50.9	42.2	21.5	21.5
10-11 AM	830	0.0	457	0.0	1500	830	0	457	0.50	0	64.8	51.0	42.3	21.4	21.4
11A-NOON	859	0.0	499	0.0	1500	859	0	499	0.51	0	64.8	50.9	42.2	21.0	21.0
NOON-1PM	911	0.0	545	0.0	1500	911	0	545	0.51	0	64.7	50.7	42.0	20.7	20.7
1-2 PM	1005	0.0	556	0.0	1500	1005	0	556	0.52	0	64.5	50.4	41.7	20.6	20.6
2-3 PM	1122	0.0	742	0.0	1500	1122	0	742	0.54	0	64.3	50.0	41.1	19.1	19.1
3-4 PM	1284	0.0	919	0.0	1500	1284	0	919	0.75	0	64.0	45.8	36.0	17.8	17.8
4-5 PM	1391	0.0	1113	0.0	1500	1391	0	1113	0.88	0	63.8	43.4	33.2	16.3	16.3
5-6 PM	1310	0.0	981	0.0	1500	1310	0	981	0.78	0	64.0	45.2	35.2	17.3	17.3
6-7 PM	970	0.0	634	0.0	1500	970	0	634	0.52	0	64.6	50.5	41.8	20.0	20.0
7-8 PM	671	0.0	394	0.0	1500	671	0	394	0.49	0	65.1	51.5	42.8	21.8	21.8
8-9 PM	535	0.0	334	0.0	1500	535	0	334	0.47	0	65.4	52.0	43.3	22.3	22.3
9-10 PM	428	0.0	267	0.0	1500	428	0	267	0.46	0	65.6	52.3	43.8	22.8	22.8
10-11 PM	319	0.0	218	0.0	1500	319	0	218	0.45	0	65.8	52.7	44.2	23.2	23.2
11PM-MID	203	0.0	135	0.0	1500	203	0	135	0.44	0	66.0	53.1	44.6	23.8	23.8

<b>*----- SITE BREAKDOWN DELAYS -----*</b>	
BREAKDOWN DURATION (MINS)	0
RANGE OF QUEUE DELAY - MIN	0.0
(VEH-H) MAX	0.0
RANGE OF DIVN DELAY - MIN	0.0
(VEH-H) MAX	0.0
AV BREAKDOWNS PER DAY	0.00
AV QUEUE DELAY/DAY (VEH-H)	0.0
AV DIVN DELAY/DAY (VEH-H)	0.0
AV TOTAL DELAY/DAY (VEH-H)	0.0

<b>*----- SITE ACCIDENT DELAYS -----*</b>	
ACCIDENT DURATION (MINS)	0
RANGE OF QUEUE DELAY - MIN	0.0
(VEH-H) MAX	0.0
RANGE OF DIVN DELAY - MIN	0.0
(VEH-H) MAX	0.0
AV ACCIDENTS PER DAY	0.00
AV QUEUE DELAY/DAY (VEH-H)	0.0
AV DIVN DELAY/DAY (VEH-H)	0.0
AV TOTAL DELAY/DAY (VEH-H)	0.0

<b>AVERAGE ACCIDENT NUMBERS (PIA/DAY)</b>	
MAIN ROUTE WITHOUT WORKS	0.0054
MAIN ROUTE WITH WORKS	0.0043
DIVERSION	0.0778

PIA: Personal Injury Accidents

<b>IMPACTS ON ROAD USERS</b>	
ROAD USER COSTS PER DAY ( DOLLARS)	\$1,966
CONGESTED HOURS PER DAY*	0

\*Delays Exceeding 15 Minutes

**STH 441: CTH 00 TO CTH CE (OUTAGAMIE COUNTY)**  
**CONTINUOUS (24 HOUR) CLOSURE**  
**DIVERSION ROUTE: CTH CE - CTH N - CTH 00**

**OCTOBER**  
 Analyzed for 2009  
 Construction Season

**GRAPHICAL REPRESENTATION OF TRAFFIC MODEL INPUT AND OUTPUT**  
**MON-THUR NORTHBOUND DIRECTION**

