

**STH 441: CTH 00 TO CTH CE (OUTAGAMIE COUNTY)
CONTINUOUS (24 HOUR) CLOSURE
DIVERSION ROUTE: CTH CE - CTH N - CTH 00**

AUGUST
Analyzed for 2009
Construction Season

SUMMARY OF TRAFFIC MODEL OUTPUT
SATURDAY SOUTHBOUND DIRECTION

TIME OF DAY	FLOWS AND CAPACITY IN VEH/HR							AVERAGE SPEEDS IN MPH							
	MAIN ROUTE		ALTERNATE ROUTE		SITE CAPA CITY	FLOW MAIN ROUTE	FLOW DIVER -TING	TOTAL DIVN FLOW	AV.DEL PER VEH (MINS)	AVERAGE QUEUE (VEH)	MAIN ROUTE		ALTERNATE ROUTE		
	DEMAND FLOW	PCT HEAVY	NORMAL FLOW	PCT HEAVY							WITHOUT WORK ZN	WITH WORK ZN	SITE	WITHOUT WORK ZN	WITH WORK ZN
MID-1 AM	284	0.0	102	0.0	1500	284	0	102	0.45	0	65.8	52.8	44.3	24.0	24.0
1-2 AM	183	0.0	55	0.0	1500	183	0	55	0.44	0	66.1	53.2	44.8	24.4	24.4
2-3 AM	140	0.0	45	0.0	1500	140	0	45	0.44	0	66.1	53.3	44.9	24.5	24.5
3-4 AM	102	0.0	42	0.0	1500	102	0	42	0.43	0	66.2	53.5	45.1	24.5	24.5
4-5 AM	143	0.0	72	0.0	1500	143	0	72	0.44	0	66.1	53.3	44.9	24.3	24.3
5-6 AM	280	0.0	127	0.0	1500	280	0	127	0.45	0	65.9	52.8	44.3	23.8	23.8
6-7 AM	518	0.0	170	0.0	1500	518	0	170	0.47	0	65.4	52.0	43.4	23.5	23.5
7-8 AM	945	0.0	252	0.0	1499	945	0	252	0.51	0	64.6	50.6	41.9	22.9	22.9
8-9 AM	1420	0.0	323	0.0	1499	1420	0	323	1.02	4	63.7	41.3	33.0	22.4	22.4
9-10 AM	1843	0.0	403	0.0	1500	1843	0	403	6.24	169	63.0	15.6	30.8	21.7	22.0
10-11 AM	2000	0.0	451	0.0	1499	1656	343	794	18.69	479	62.7	8.3	30.8	21.4	20.4
11A-NOON	1859	0.0	442	0.0	1499	1455	405	846	19.12	489	62.9	8.3	30.8	21.4	20.0
NOON-1PM	1666	0.0	438	0.0	1500	1458	208	646	17.46	443	63.3	8.6	30.8	21.5	21.4
1-2 PM	1546	0.0	415	0.0	1500	1476	70	485	16.30	412	63.5	8.8	30.8	21.7	22.5
2-3 PM	1461	0.0	413	0.0	1499	1461	0	413	15.40	387	63.7	9.1	30.8	21.7	22.9
3-4 PM	1395	0.0	388	0.0	1499	1395	0	388	12.57	312	63.8	10.0	30.8	21.9	22.7
4-5 PM	1412	0.0	352	0.0	1500	1412	0	352	9.10	219	63.8	11.8	30.8	22.2	22.5
5-6 PM	1236	0.0	340	0.0	1499	1236	0	340	2.17	63	64.1	29.7	35.2	22.2	22.2
6-7 PM	1057	0.0	284	0.0	1500	1057	0	284	0.52	0	64.4	50.2	41.5	22.7	22.7
7-8 PM	903	0.0	226	0.0	1500	903	0	226	0.51	0	64.7	50.7	42.0	23.1	23.1
8-9 PM	830	0.0	191	0.0	1500	830	0	191	0.50	0	64.8	51.0	42.3	23.3	23.3
9-10 PM	803	0.0	190	0.0	1500	803	0	190	0.50	0	64.9	51.0	42.4	23.3	23.3
10-11 PM	740	0.0	181	0.0	1500	740	0	181	0.49	0	65.0	51.3	42.6	23.5	23.5
11PM-MID	500	0.0	148	0.0	1500	500	0	148	0.47	0	65.5	52.1	43.5	23.7	23.7

----- SITE BREAKDOWN DELAYS -----

BREAKDOWN DURATION (MINS)	0
RANGE OF QUEUE DELAY - MIN (VEH-H) MAX	0.0
RANGE OF DIVN DELAY - MIN (VEH-H) MAX	0.0
AV BREAKDOWNS PER DAY	0.00
AV QUEUE DELAY/DAY (VEH-H)	0.0
AV DIVN DELAY/DAY (VEH-H)	0.0
AV TOTAL DELAY/DAY (VEH-H)	0.0

----- SITE ACCIDENT DELAYS -----

ACCIDENT DURATION (MINS)	0
RANGE OF QUEUE DELAY - MIN (VEH-H) MAX	0.0
RANGE OF DIVN DELAY - MIN (VEH-H) MAX	0.0
AV ACCIDENTS PER DAY	0.00
AV QUEUE DELAY/DAY (VEH-H)	0.0
AV DIVN DELAY/DAY (VEH-H)	0.0
AV TOTAL DELAY/DAY (VEH-H)	0.0

AVERAGE ACCIDENT NUMBERS (PIA/DAY)

MAIN ROUTE WITHOUT WORKS	0.0074
MAIN ROUTE WITH WORKS	0.0056
DIVERSION	0.0524

PIA: Personal Injury Accidents

IMPACTS ON ROAD USERS

ROAD USER COSTS PER DAY (DOLLARS)	\$58,276
CONGESTED HOURS PER DAY*	5

*Delays Exceeding 15 Minutes

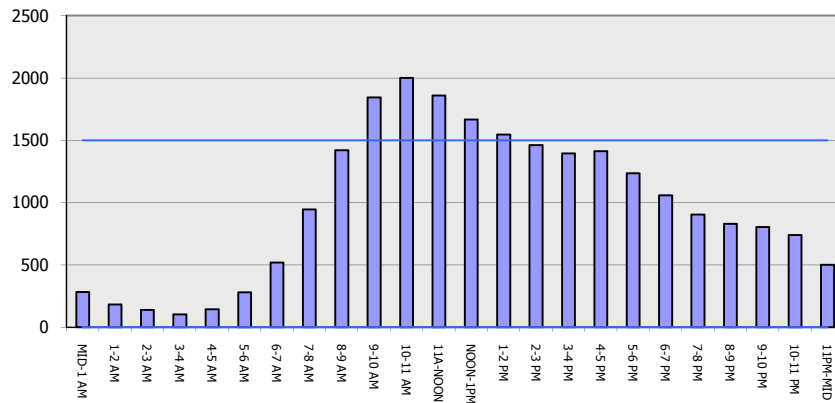
STH 441: CTH 00 TO CTH CE (OUTAGAMIE COUNTY)
CONTINUOUS (24 HOUR) CLOSURE
DIVERSION ROUTE: CTH CE - CTH N - CTH 00

AUGUST
 Analyzed for 2009
 Construction Season

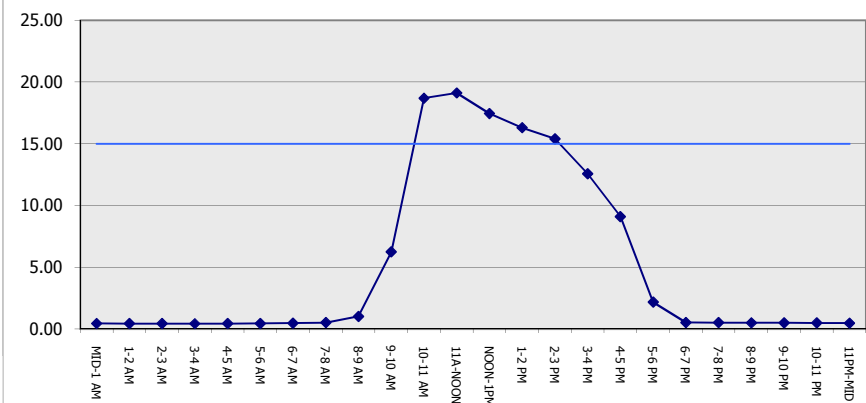
GRAPHICAL REPRESENTATION OF TRAFFIC MODEL INPUT AND OUTPUT

SATURDAY SOUTHBOUND DIRECTION

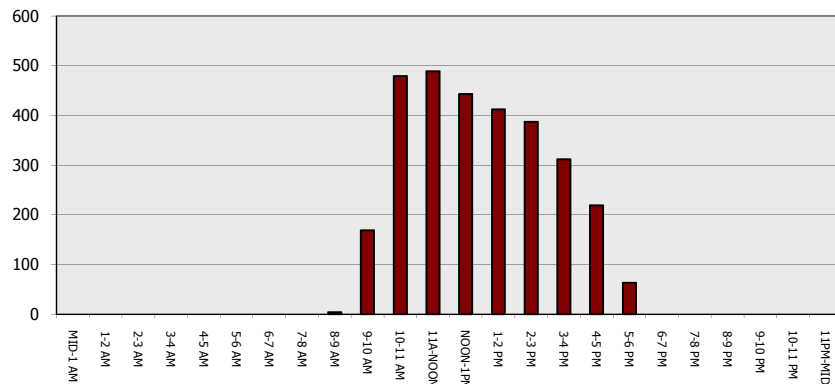
Main Route - Traffic Demand (Vehicles Per Hour)



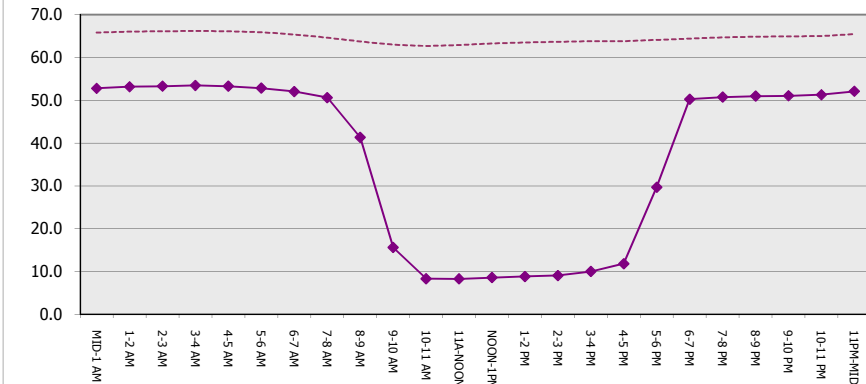
Main Route Average Delay Per Vehicle (Minutes)



Main Route - Average Queue Length (Vehicles)



Main Route - Average Speed (MPH)



STH 441: CTH 00 TO CTH CE (OUTAGAMIE COUNTY) CONTINUOUS (24 HOUR) CLOSURE DIVERSION ROUTE: CTH CE - CTH N - CTH 00	AUGUST Analyzed for 2009 Construction Season
---	---

SUMMARY OF TRAFFIC MODEL OUTPUT	
SATURDAY	NORTHBOUND DIRECTION

TIME OF DAY	FLOWS AND CAPACITY IN VEH/HR								AVERAGE SPEEDS IN MPH						
	MAIN		DIVERSION		SITE CAPA CITY	FLOW MAIN ROUTE	FLOW DIVER -TING	TOTAL DIVN FLOW	AV.DEL PER VEH (MINS)	AVERAGE QUEUE (VEH)	MAIN ROUTE		SITE	ALTERNATE ROUTE	
	DEMAND FLOW	PCT HEAVY	NORMAL FLOW	PCT HEAVY							WITHOUT WORK ZN	WITH WORK ZN		WITHOUT WORK ZN	WITH WORK ZN
MID-1 AM	255	0.0	130	0.0	1500	255	0	130	0.45	0	65.9	52.9	44.5	23.8	23.8
1-2 AM	130	0.0	79	0.0	1500	130	0	79	0.44	0	66.1	53.3	45.0	24.2	24.2
2-3 AM	116	0.0	64	0.0	1500	116	0	64	0.43	0	66.2	53.4	45.0	24.3	24.3
3-4 AM	111	0.0	47	0.0	1500	111	0	47	0.43	0	66.2	53.4	45.0	24.5	24.5
4-5 AM	149	0.0	44	0.0	1500	149	0	44	0.44	0	66.1	53.3	44.9	24.5	24.5
5-6 AM	212	0.0	95	0.0	1500	212	0	95	0.44	0	66.0	53.0	44.6	24.1	24.1
6-7 AM	329	0.0	170	0.0	1500	329	0	170	0.45	0	65.8	52.7	44.2	23.5	23.5
7-8 AM	524	0.0	191	0.0	1500	524	0	191	0.47	0	65.4	52.0	43.4	23.3	23.3
8-9 AM	787	0.0	255	0.0	1500	787	0	255	0.50	0	64.9	51.1	42.4	22.9	22.9
9-10 AM	1069	0.0	347	0.0	1500	1069	0	347	0.53	0	64.4	50.2	41.4	22.2	22.2
10-11 AM	1354	0.0	435	0.0	1499	1354	0	435	0.83	0	63.8	44.2	34.2	21.5	21.5
11A-NOON	1549	0.0	493	0.0	1499	1549	0	493	1.46	13	63.5	35.8	30.8	21.1	21.1
NOON-1PM	1705	0.0	524	0.0	1500	1705	0	524	5.92	144	63.2	15.7	30.8	20.8	20.9
1-2 PM	1761	0.0	530	0.0	1500	1715	46	577	14.80	377	63.1	9.3	30.8	20.8	21.6
2-3 PM	1722	0.0	518	0.0	1499	1492	230	748	18.26	465	63.2	8.4	30.8	20.9	20.7
3-4 PM	1607	0.0	539	0.0	1499	1484	124	663	17.58	446	63.4	8.6	30.8	20.7	21.2
4-5 PM	1751	0.0	500	0.0	1500	1518	233	733	18.14	462	63.1	8.4	30.8	21.0	20.7
5-6 PM	1472	0.0	488	0.0	1499	1413	59	547	16.50	417	63.7	8.8	30.8	21.1	22.0
6-7 PM	1193	0.0	447	0.0	1499	1193	0	447	8.86	234	64.1	12.4	32.5	21.4	21.9
7-8 PM	1056	0.0	349	0.0	1500	1056	0	349	0.66	5	64.4	47.6	41.4	22.2	22.2
8-9 PM	987	0.0	372	0.0	1500	987	0	372	0.52	0	64.5	50.5	41.7	22.0	22.0
9-10 PM	855	0.0	339	0.0	1500	855	0	339	0.51	0	64.8	50.9	42.2	22.2	22.2
10-11 PM	664	0.0	284	0.0	1500	664	0	284	0.49	0	65.1	51.5	42.9	22.7	22.7
11PM-MID	480	0.0	179	0.0	1500	480	0	179	0.47	0	65.5	52.2	43.6	23.5	23.5

----- SITE BREAKDOWN DELAYS -----	
BREAKDOWN DURATION (MINS)	0
RANGE OF QUEUE DELAY - MIN	0.0
(VEH-H) MAX	0.0
RANGE OF DIVN DELAY - MIN	0.0
(VEH-H) MAX	0.0
AV BREAKDOWNS PER DAY	0.00
AV QUEUE DELAY/DAY (VEH-H)	0.0
AV DIVN DELAY/DAY (VEH-H)	0.0
AV TOTAL DELAY/DAY (VEH-H)	0.0

----- SITE ACCIDENT DELAYS -----	
ACCIDENT DURATION (MINS)	0
RANGE OF QUEUE DELAY - MIN	0.0
(VEH-H) MAX	0.0
RANGE OF DIVN DELAY - MIN	0.0
(VEH-H) MAX	0.0
AV ACCIDENTS PER DAY	0.00
AV QUEUE DELAY/DAY (VEH-H)	0.0
AV DIVN DELAY/DAY (VEH-H)	0.0
AV TOTAL DELAY/DAY (VEH-H)	0.0

AVERAGE ACCIDENT NUMBERS (PIA/DAY)	
MAIN ROUTE WITHOUT WORKS	0.0070
MAIN ROUTE WITH WORKS	0.0053
DIVERSION	0.0600

PIA: Personal Injury Accidents

IMPACTS ON ROAD USERS	
ROAD USER COSTS PER DAY (DOLLARS)	\$49,641
CONGESTED HOURS PER DAY*	4

*Delays Exceeding 15 Minutes

STH 441: CTH 00 TO CTH CE (OUTAGAMIE COUNTY)
CONTINUOUS (24 HOUR) CLOSURE
DIVERSION ROUTE: CTH CE - CTH N - CTH 00

AUGUST
 Analyzed for 2009
 Construction Season

GRAPHICAL REPRESENTATION OF TRAFFIC MODEL INPUT AND OUTPUT
SATURDAY NORTHBOUND DIRECTION

