

STH 441: CTH 00 TO CTH CE (OUTAGAMIE COUNTY) CONTINUOUS (24 HOUR) CLOSURE DIVERSION ROUTE: CTH CE - CTH N - CTH 00	AUGUST
	Analyzed for 2009 Construction Season

SUMMARY OF TRAFFIC MODEL OUTPUT

MON-THUR SOUTHBOUND DIRECTION

TIME OF DAY	FLOWS AND CAPACITY IN VEH/HR							AVERAGE SPEEDS IN MPH							
	MAIN ROUTE		ALTERNATE ROUTE		SITE CAPA CITY	FLOW MAIN ROUTE	FLOW DIVER -TING	TOTAL DIVN FLOW	AV.DEL PER VEH (MINS)	AVERAGE QUEUE (VEH)	MAIN ROUTE		ALTERNATE ROUTE		
	DEMAND FLOW	PCT HEAVY	NORMAL FLOW	PCT HEAVY							WITHOUT WORK ZN	WITH WORK ZN	SITE	WITHOUT WORK ZN	WITH WORK ZN
MID-1 AM	182	0.0	47	0.0	1500	182	0	47	0.44	0	66.1	53.2	44.8	24.5	24.5
1-2 AM	128	0.0	32	0.0	1500	128	0	32	0.43	0	66.1	53.3	45.0	24.6	24.6
2-3 AM	115	0.0	28	0.0	1500	115	0	28	0.43	0	66.2	53.4	45.0	24.7	24.7
3-4 AM	105	0.0	42	0.0	1500	105	0	42	0.43	0	66.2	53.4	45.1	24.5	24.5
4-5 AM	174	0.0	126	0.0	1500	174	0	126	0.44	0	66.1	53.2	44.8	23.8	23.8
5-6 AM	368	0.0	355	0.0	1500	368	0	355	0.46	0	65.7	52.5	44.0	22.1	22.1
6-7 AM	882	0.0	645	0.0	1500	882	0	645	0.51	0	64.8	50.8	42.1	19.9	19.9
7-8 AM	1245	0.0	866	0.0	1500	1245	0	866	0.70	0	64.1	46.7	37.1	18.2	18.2
8-9 AM	1277	0.0	536	0.0	1500	1277	0	536	0.74	0	64.0	46.0	36.1	20.7	20.7
9-10 AM	1315	0.0	426	0.0	1500	1315	0	426	0.79	0	64.0	45.1	35.1	21.5	21.5
10-11 AM	1301	0.0	434	0.0	1500	1301	0	434	0.77	0	64.0	45.4	35.5	21.5	21.5
11A-NOON	1246	0.0	462	0.0	1500	1246	0	462	0.70	0	64.1	46.7	37.0	21.3	21.3
NOON-1PM	1181	0.0	499	0.0	1500	1181	0	499	0.61	0	64.2	48.3	39.1	21.0	21.0
1-2 PM	1185	0.0	545	0.0	1500	1185	0	545	0.62	0	64.1	48.3	38.9	20.7	20.7
2-3 PM	1204	0.0	538	0.0	1500	1204	0	538	0.64	0	64.1	47.8	38.3	20.7	20.7
3-4 PM	1325	0.0	586	0.0	1500	1325	0	586	0.80	0	63.9	44.8	34.8	20.4	20.4
4-5 PM	1479	0.0	681	0.0	1500	1479	0	681	1.00	0	63.7	41.6	31.2	19.6	19.6
5-6 PM	1445	0.0	667	0.0	1500	1445	0	667	0.95	0	63.7	42.3	31.9	19.7	19.7
6-7 PM	1098	0.0	444	0.0	1500	1098	0	444	0.53	0	64.3	50.1	41.4	21.4	21.4
7-8 PM	763	0.0	298	0.0	1500	763	0	298	0.50	0	65.0	51.2	42.5	22.5	22.5
8-9 PM	601	0.0	264	0.0	1500	601	0	264	0.48	0	65.3	51.7	43.1	22.8	22.8
9-10 PM	546	0.0	213	0.0	1500	546	0	213	0.48	0	65.4	51.9	43.3	23.2	23.2
10-11 PM	494	0.0	173	0.0	1500	494	0	173	0.47	0	65.5	52.1	43.5	23.5	23.5
11PM-MID	333	0.0	114	0.0	1500	333	0	114	0.45	0	65.8	52.7	44.2	24.0	24.0

----- SITE BREAKDOWN DELAYS -----	
BREAKDOWN DURATION (MINS)	0
RANGE OF QUEUE DELAY - MIN	0.0
(VEH-H) MAX	0.0
RANGE OF DIVN DELAY - MIN	0.0
(VEH-H) MAX	0.0
AV BREAKDOWNS PER DAY	0.00
AV QUEUE DELAY/DAY (VEH-H)	0.0
AV DIVN DELAY/DAY (VEH-H)	0.0
AV TOTAL DELAY/DAY (VEH-H)	0.0

----- SITE ACCIDENT DELAYS -----	
ACCIDENT DURATION (MINS)	0
RANGE OF QUEUE DELAY - MIN	0.0
(VEH-H) MAX	0.0
RANGE OF DIVN DELAY - MIN	0.0
(VEH-H) MAX	0.0
AV ACCIDENTS PER DAY	0.00
AV QUEUE DELAY/DAY (VEH-H)	0.0
AV DIVN DELAY/DAY (VEH-H)	0.0
AV TOTAL DELAY/DAY (VEH-H)	0.0

AVERAGE ACCIDENT NUMBERS (PIA/DAY)	
MAIN ROUTE WITHOUT WORKS	0.0064
MAIN ROUTE WITH WORKS	0.0050
DIVERSION	0.0668

PIA: Personal Injury Accidents

IMPACTS ON ROAD USERS	
ROAD USER COSTS PER DAY (DOLLARS)	\$2,884
CONGESTED HOURS PER DAY*	0

*Delays Exceeding 15 Minutes

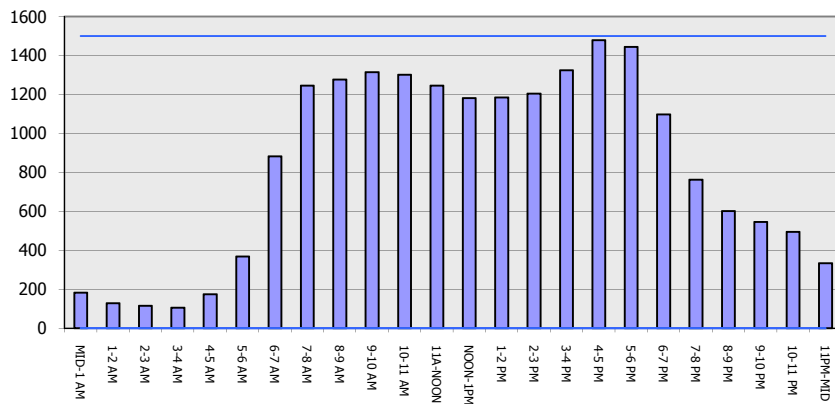
STH 441: CTH 00 TO CTH CE (OUTAGAMIE COUNTY)
CONTINUOUS (24 HOUR) CLOSURE
DIVERSION ROUTE: CTH CE - CTH N - CTH 00

AUGUST
 Analyzed for 2009
 Construction Season

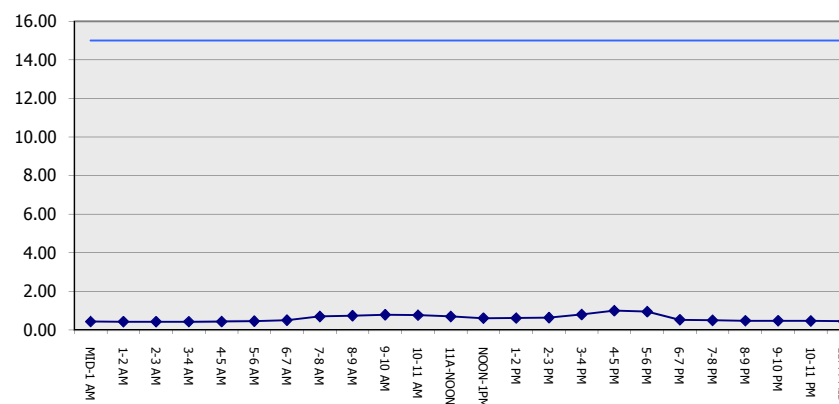
GRAPHICAL REPRESENTATION OF TRAFFIC MODEL INPUT AND OUTPUT

MON-THUR SOUTHBOUND DIRECTION

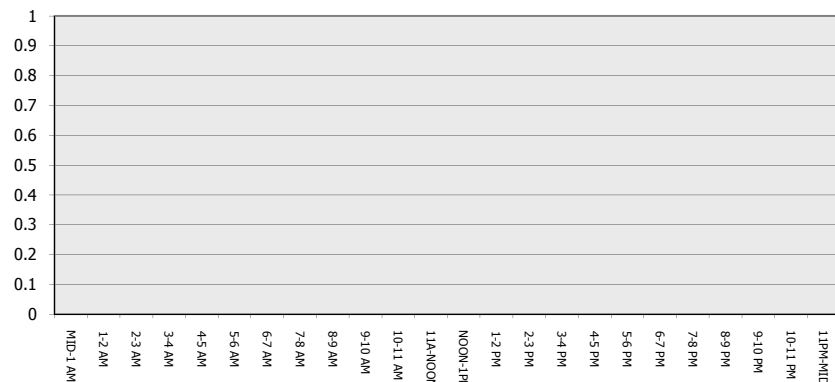
Main Route - Traffic Demand (Vehicles Per Hour)



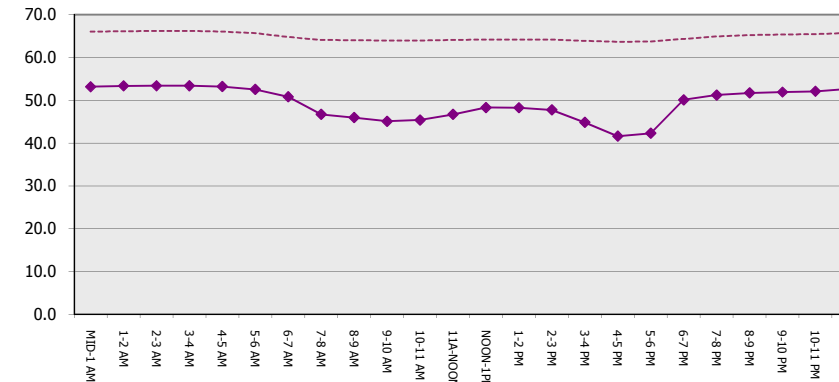
Main Route Average Delay Per Vehicle (Minutes)



Main Route - Average Queue Length (Vehicles)



Main Route - Average Speed (MPH)



STH 441: CTH 00 TO CTH CE (OUTAGAMIE COUNTY) CONTINUOUS (24 HOUR) CLOSURE DIVERSION ROUTE: CTH CE - CTH N - CTH 00	AUGUST
	Analyzed for 2009 Construction Season

SUMMARY OF TRAFFIC MODEL OUTPUT

MON-THUR NORTHBOUND DIRECTION

TIME OF DAY	FLOWS AND CAPACITY IN VEH/HR								AVERAGE SPEEDS IN MPH						
	MAIN		DIVERSION		SITE CAPA CITY	FLOW MAIN ROUTE	FLOW DIVER -TING	TOTAL DIVN FLOW	AV.DEL PER VEH (MINS)	AVERAGE QUEUE (VEH)	MAIN ROUTE		SITE	ALTERNATE ROUTE	
	DEMAND FLOW	PCT HEAVY	NORMAL FLOW	PCT HEAVY							WITHOUT WORK ZN	WITH WORK ZN		WITHOUT WORK ZN	WITH WORK ZN
MID-1 AM	167	0.0	84	0.0	1500	167	0	84	0.44	0	66.1	53.2	44.8	24.2	24.2
1-2 AM	115	0.0	55	0.0	1500	115	0	55	0.43	0	66.2	53.4	45.0	24.4	24.4
2-3 AM	97	0.0	46	0.0	1500	97	0	46	0.43	0	66.2	53.5	45.1	24.5	24.5
3-4 AM	122	0.0	33	0.0	1500	122	0	33	0.43	0	66.1	53.3	45.0	24.6	24.6
4-5 AM	232	0.0	60	0.0	1500	232	0	60	0.45	0	66.0	53.0	44.5	24.4	24.4
5-6 AM	510	0.0	208	0.0	1500	510	0	208	0.47	0	65.5	52.0	43.5	23.2	23.2
6-7 AM	880	0.0	524	0.0	1500	880	0	524	0.51	0	64.8	50.8	42.1	20.8	20.8
7-8 AM	1186	0.0	729	0.0	1500	1186	0	729	0.62	0	64.1	48.3	38.9	19.3	19.3
8-9 AM	1050	0.0	522	0.0	1500	1050	0	522	0.52	0	64.5	50.3	41.5	20.9	20.9
9-10 AM	1000	0.0	455	0.0	1500	1000	0	455	0.52	0	64.5	50.4	41.7	21.4	21.4
10-11 AM	1035	0.0	466	0.0	1500	1035	0	466	0.52	0	64.5	50.3	41.5	21.2	21.2
11A-NOON	1064	0.0	518	0.0	1500	1064	0	518	0.53	0	64.4	50.2	41.5	20.9	20.9
NOON-1PM	1097	0.0	551	0.0	1500	1097	0	551	0.53	0	64.3	50.1	41.4	20.6	20.6
1-2 PM	1207	0.0	583	0.0	1500	1207	0	583	0.65	0	64.1	47.7	38.3	20.4	20.4
2-3 PM	1332	0.0	774	0.0	1499	1332	0	774	0.81	0	63.9	44.7	34.7	18.9	18.9
3-4 PM	1470	0.0	879	0.0	1499	1470	0	879	1.00	0	63.7	41.6	31.5	18.1	18.1
4-5 PM	1600	0.0	1134	0.0	1500	1600	0	1134	2.71	50	63.4	26.1	30.8	16.1	16.1
5-6 PM	1511	0.0	977	0.0	1499	1511	0	977	5.53	121	63.6	16.2	30.8	17.3	17.3
6-7 PM	1140	0.0	639	0.0	1500	1140	0	639	1.13	22	64.3	40.1	38.5	19.9	19.9
7-8 PM	853	0.0	448	0.0	1500	853	0	448	0.50	0	64.8	50.9	42.2	21.4	21.4
8-9 PM	734	0.0	416	0.0	1500	734	0	416	0.49	0	65.0	51.3	42.7	21.7	21.7
9-10 PM	602	0.0	330	0.0	1500	602	0	330	0.48	0	65.3	51.7	43.1	22.3	22.3
10-11 PM	420	0.0	279	0.0	1500	420	0	279	0.46	0	65.6	52.4	43.8	22.7	22.7
11PM-MID	277	0.0	178	0.0	1500	277	0	178	0.45	0	65.9	52.8	44.4	23.5	23.5

----- SITE BREAKDOWN DELAYS -----	
BREAKDOWN DURATION (MINS)	0
RANGE OF QUEUE DELAY - MIN	0.0
(VEH-H) MAX	0.0
RANGE OF DIVN DELAY - MIN	0.0
(VEH-H) MAX	0.0
AV BREAKDOWNS PER DAY	0.00
AV QUEUE DELAY/DAY (VEH-H)	0.0
AV DIVN DELAY/DAY (VEH-H)	0.0
AV TOTAL DELAY/DAY (VEH-H)	0.0

----- SITE ACCIDENT DELAYS -----	
ACCIDENT DURATION (MINS)	0
RANGE OF QUEUE DELAY - MIN	0.0
(VEH-H) MAX	0.0
RANGE OF DIVN DELAY - MIN	0.0
(VEH-H) MAX	0.0
AV ACCIDENTS PER DAY	0.00
AV QUEUE DELAY/DAY (VEH-H)	0.0
AV DIVN DELAY/DAY (VEH-H)	0.0
AV TOTAL DELAY/DAY (VEH-H)	0.0

AVERAGE ACCIDENT NUMBERS (PIA/DAY)	
MAIN ROUTE WITHOUT WORKS	0.0063
MAIN ROUTE WITH WORKS	0.0050
DIVERSION	0.0806

PIA: Personal Injury Accidents

IMPACTS ON ROAD USERS	
ROAD USER COSTS PER DAY (DOLLARS)	\$4,889
CONGESTED HOURS PER DAY*	0

*Delays Exceeding 15 Minutes

STH 441: CTH 00 TO CTH CE (OUTAGAMIE COUNTY)
CONTINUOUS (24 HOUR) CLOSURE
DIVERSION ROUTE: CTH CE - CTH N - CTH 00

AUGUST
 Analyzed for 2009
 Construction Season

GRAPHICAL REPRESENTATION OF TRAFFIC MODEL INPUT AND OUTPUT
MON-THUR NORTHBOUND DIRECTION

